

DAY TWO - Tuesday, August 1, 2006

425



425. **Mason Factory Premier Grade blue winged teal drake decoy in XOC.** Few minor rubs to the bill tip. Seam line visible. This is the Premier blue wing teal pictured on the second shelf down on the far right on page 483 in the Luckey and Lewis book. The paint pattern features the desirable “double blue” paint.

4500-7500

Pitt collection.

Provenance: Collecting Antique Bird Decoys and Duck Calls.

426. **Mason Factory Detroit Grade Glass Eye blue winged teal hen decoy in XOC with a short narrow check and a knot on the right side of the back with a few flakes of paint off the head.** “Glantz” branded on the bottom. See this exact decoy on the top of page 164 in the Luckey and Lewis book.

2500-4500

Pitt collection.

Provenance: Collecting Antique Bird Decoys and Duck Calls.

427. **Mason Factory Detroit Grade Glass Eye mallard hen decoy in XOC with two narrow bottom checks.** No weight. Original neck filler in good condition. Tiny dent under the bill, tiny mark on the left side of the face. See top of page 171, for a picture of this exact decoy in the Luckey and Lewis book.

1000-1500

Pitt collection.

Provenance: Collecting Antique Bird Decoys and Duck Calls.

428. **Mason Factory Detroit Grade Glass Eye mallard drake decoy in XOC.** Never rigged. Check along the bottom, knot on the right side of the body with minor flaking. See second photo from the bottom page 171 of Luckey and Lewis book for a photo of this exact decoy.

1000-1200

Pitt collection.

Provenance: Collecting Antique Bird Decoys and Duck Calls.

426



427

428



429PR



429. Pair of Evans Factory canvasback decoys in outstanding original condition. Appear unused. Nicely painted with sponge detail. Both have the “EVANS DECOY” stamp on the bottom. One has “2.00, 20.00-doz”. These exact decoys are pictured in the two bottom photos on page 153 of the Luckey and Lewis book. 7000-9000
Pitt collection.

Provenance: Collecting Antique Bird Decoys and Duck Calls.

430. EARLY Mason Factory Challenge Grade bluebill hen decoy in fine OP. Few shot scars, light wear to the top of the head and the edges of the bill and tail. 2500-3500



430

431. Early Mason Factory Challenge Grade redhead drake decoy in XOP with light wear on the top of the head, the bill, and the edge of the tail. Few scrapes and surface dents. Narrow bottom check. A number of tiny flakes from a grain line check in the body. 2500-3500



431

432. Pair of Evans Factory bluebill decoys in fine original paint showing some light in use wear. A nicely matched pair of rig-mates. See Luckey and Lewis book and North American Factory Decoys for information regarding the Evans Factory from Ladysmith, Wisconsin. 1500-2500
Pitt collection.

432PR



433



434



433. Rare Mason or Peterson Factory Tack Eye blue winged teal drake decoy in XOC. Original filler over a knot on the back has minor flaking. Struck by a few shot. See bottom of page 164 of Luckey and Lewis book for a photo of three Pitt Mason or Peterson teal decoys. 2500-4500
Pitt collection.

Provenance: Collecting Antique Bird Decoys and Duck Calls.

434. Rare early Mason or Peterson Factory blue winged teal hen decoy with tack eyes in XOC. Small chip on the mid back, narrow sliver from the left side and a small flake of paint missing from one wing patch. 2500-4500
Pitt collection.

Provenance: Collecting Antique Bird Decoys and Duck Calls. Luckey and Lewis

435. Miniature wood duck drake by A. E. Crowell, East Harwich, MA in XOC. Impressed rectangular brand on the bottom of the base. 2500-3500

436. Miniature wigeon drake by A. E. Crowell, East Harwich, MA in XOC. Impressed rectangular brand and 6/55 in pencil on the bottom of the base. 2400-3200

437. RARE miniature belted kingfisher on a driftwood base by A. E. Crowell, East Harwich, MA in XOC. "A. E. Crowell and Son, Harwichport, Mass, Kingfisher F" in ink on the bottom of the base. 2500-3500

438. Miniature running red breasted merganser drake by A. E. Crowell, East Harwich, MA in XOC. Impressed rectangular brand on the bottom of the base. 2500-3500

439. Miniature feeding canvasback drake by A. E. Crowell, East Harwich, MA in XOC. Impressed rectangular brand on the bottom of the base. 2500-3500

435-436-437



438-439



HAROLD GIBBS. Though well known to collectors of miniature bird carvings as one of the great New England carvers and inspired by his neighbor, the great bird miniature carver A. J. King. Harold Gibbs, also the head of RI Fish and Game for 7 years, was revered locally as a pioneer salt water fly fisherman and the developer of the Gibbs Striper Fly. Gibbs was born in 1886 in Rock Village, MA. Rock Village was small hamlet near Middleboro. His family moved to West Barrington, RI., located on Narragansett Bay when he was just six years old. It was here that his talents developed as a carver, outdoorsman, and a marine scientist.

We'll be publishing more about Harold Gibbs on our web site in the future. The late Donald Howes was a personal friend of Mr. Gibbs, and purchased

his collection of miniatures directly from Mr. Gibbs. Mr. Gibbs miniatures are of high quality yet still reasonably valued as compared to his peers.



440-441-441A

The following three lots were recently found in a RI estate. A few more are listed later in the sale. They had a light professional cleaning and the mounts were stabilized by Steven Weaver where necessary.

440. Very rare early miniature oldsquaw drake by Harold Gibbs of West Barrington, RI. In XOC. This is one of the earliest Gibbs miniatures we have seen as are the next two. Signed and dated "HNG, 1955, Old Squaw, Winter Plumage." 800-1200

441. EARLY Green-wing teal drake by Harold Gibbs, signed "Green Wing Teal, HNG". Same collection as above. Ca 1955. In XOC. 700-900

441A. Wood duck drake with attitude by Harold Gibbs. This early piece is signed "HNG Wood Duck" on the bottom. Ca. 1955. 900-1200

442. Miniature hissing Canada Goose on a driftwood base signed "H. Gibbs, 1969" in pencil on the bottom. In XOC. 700-900

Provenance: Howes collection.

442-443-444



443. Miniature cock pheasant on a driftwood base signed "H. N. Gibbs, March 8, 1968" in pencil on the bottom. In XOC. 700-900

Provenance: Howes collection.

444. Miniature falcon on a driftwood base signed "H. Gibbs, March 1970" in pencil on the bottom. In XOC. 800-1200

Provenance: Howes collection.

445. Pair of outstanding miniature wood ducks on early stick bases by James Lapham. Absolutely the finest form and soft feather paint we have ever seen by this maker. In XOC. Both are signed "Wood Duck Drake" and "Wood Duck Hen" respectively and "J. Lapham, Dennisport, Mass." Stamped with "Donald B. Howes" ink stamp. 1500-2500

Provenance: Howes collection.



445PR

446PR



446. STUNNING pair of miniature geese ca early to mid 1900's with extended and crossed wing tips by Courtney Allen of North Truro, Cape Cod, Massachusetts. In original condition with light wear to paint, small nick in the body of one, and some wear and cracking to the gesso on the legs. Allen's carvings are rare. 700-900



450-451

447-448-449

447. Miniature turned head canvasback drake with a split tail on a circular wooden base signed "J. Lapham, Dennisport, Mass" and "Canvasback Drake" on the bottom of the base. Neck check has been glued tight. "Donald B. Howes" ink stamp on the bottom of the base. Provenance: Howes collection. 600-900

448. Miniature surf scoter drake with a split tail on a circular wooden base signed "J. Lapham, Dennisport, Mass" and "Surf Scoter Drake" on the bottom of the base. In XOC. 600-900 Provenance: Howes collection.

449. Miniature pintail drake with a split tail on a circular wooden base signed "J. Lapham, Dennisport, Mass" and "Pintail Drake" on the bottom of the base. In XOC. Provenance: Howes collection. 600-900

451A



450. Miniature wood thrush in XOC signed on the bottom of the driftwood base "Wood Thrush by Robert Morse". 900-1200

451. Miniature Canada goose signed on the bottom of the driftwood base "Canada Goose by Robert Morse". Professional restoration to neck check and a rub on the tail edge by Steven A. Weaver. 900-1200

451A. Miniature flying herring gull on a driftwood base by Alston Burr. Ink stamp on the bottom reads "Alston Burr, Hingham, Mass". Minor chips to two of the wing tips, neck seam glued. 250-450

452. Miniature cock pheasant on a burl base by Russ Burr. Stamped in ink "Russ P. Burr, Hingham, Mass." on the bottom of the base. In XOC. The finest example of a Russ Burr pheasant we have seen. 600-900 Provenance: Howes collection.

453. Miniature wood duck drake by Joseph Lincoln, Accord, Ma. Beautifully painted with a carved crest. In XOC, virtually mint. 3000-5000 Provenance: Howes collection.

452-453



454-455



456-457



458-459-460

454. Very early miniature swimming brant decoy by Joseph Lincoln, Accord, Ma. In XOC with typical upper body feathering. Brought to restorer Ken DeLong to test for side feathers under the white. After testing the white, he concluded that they never had the usual painted feathers on the side. From an important old Duxbury collection. Others from this collection were pictured in the Hal Sorenson publication, Decoy Collectors Guide. See the descriptions of the four Lincoln lots in Monday's sale for further information.

3000-5000

455. Miniature reaching brant decoy by Joseph Lincoln, Accord, Ma. In XOC. RARE form. Typical upper body feathering.

3000-5000

456. Miniature Rose-Breasted Grosbeak by Jess Blackstone, Concord, NH in XOC. "Rose Breasted Grosbeak", "#74" and the typical "JB" in ink on the bottom of the base.

900-1200

457. Turned head split tail wood duck drake miniature by Jess Blackstone, Concord, NH in XOC. "Wood Duck", "#6559" and the typical "JB" signature in ink on the bottom of the base.

800-1200

458. Miniature Cape May Warbler by Jess Blackstone, Concord, NH in XOC. "Cape May Warbler", "#6522" and the typical "JB" in ink on the bottom of the base.

1200-1600

459. Dropped wing miniature Lapland Longspur by Jess Blackstone, Concord, NH in XOC. "Lapland Longspur", "#14" and the typical "JB" signature in ink on the bottom of the base.

1200-1600

460. Cerulean Warbler by Jess Blackstone, Concord, NH in XOC. #14 and typical "JB" signature on the bottom of the base.

1200-1400

461. RARE 1/2 life size flying wall mount mallard drake by James Lapham. Signed "James Lapham, Dennisport, Mass". In XOC. Outstanding and rare.

1200-1800

Provenance: Howes collection.

461





462-463



467-468

464-465-466



462. Large yellowlegs with an open bill on a carved wooden "clam shell" base by James Lapham. Signed "J. Lapham, Dennisport, Mass, Summer Yellowlegs. In XOC with a tight neck check. 700-900
Provenance: Howes collection.

463. Rare upland plover with glass eyes on a carved wooden "stone" base by James Lapham. Signed "James Lapham, Dennisport, Mass, Cape Cod, Upland Plover" on the bottom of the base. In XOC with minor cracking to the leg putty. 700-900
Provenance: Howes collection.

464. Short billed dowitcher with an open bill on a carved wooden "clam shell" base by James Lapham. Signed "James Lapham, Dennisport, Mass, Short Billed Dowitcher". In XOC. 700-900
Provenance: Howes collection.

465. Near life size sandpiper on a wooden "clam shell" base by James Lapham. Signed "James Lapham, Dennisport, Mass, Cape Cod, Sandpiper". In XOC. 600-800
Provenance: Howes collection.

468A

466. Ring necked plover on a carved wooden "clam shell" base by James Lapham. Signed "J. Lapham, Dennisport, Mass, Ring Necked Plover". In XOC. 500-750
Provenance: Howes collection.

467. Miniature great horned owl by Peter Peltz, Sandwich, MA. in XOC. Signed "Peter Peltz on the bottom of the driftwood base. 300-500

468. Near life size turned head wood thrush by Peter Peltz, Sandwich, Ma. in XOC. Signed "Peter Peltz, Wood Thrush" on the bottom of the base. 250-450

468A. Mallard drake by A. E. Crowell in old paint. Couple of body checks. Repair in several areas with touch-up. The oval stamp is on the bottom. X Starr collection. 1500-1800

468B. Black duck by A. E. Crowell. The body is in fine original paint. There is a piece of wood chipped off and missing on the side of the tail and some chipping along tail edge. The head may be a replacement by Cleon or Dr. Starr. LBRB branded on the bottom. X Starr collection. 1200-1500

468B





469



470

469. **RARE Bufflehead drake decoy circa mid 1930's in virtually mint condition by A. E. Crowell of East Harwich, Mass.** Tiny rub on top of head. BUFFLEHEAD printed deeply in pencil on the bottom by the owner/consignor. Features carved tail feathers and a carved peaked ridge to the top of the head. Glass eyes, head tilted to the right. The impressed Crowell rectangular brand is on the bottom. Never rigged. Concave sculpturing where the eyes are set in the center of the head similar to the Alexandria Bay carvers, Sam Denny, Chauncey Wheeler, and Frank Combs. Typical use of the rasp to simulate feathers on the breast and back of the head.

12,000- 18,000

470. **Turned head pintail drake decoy by A. E. Crowell, East Harwich, MA in XOC, virtually mint, with nicely detailed paint and rasping on the back of the head and the breast.** Glass eyes. Bottom has a deeply impressed oval brand and two rectangular brands. "Male Pintail" written in ink and numerous "Donald B. Howes" ink stamps on the bottom.

Provenance: Howes collection.

9,000-,12,000

471

471. **Solid body Canada goose decoy ca 1915 with tack eyes by A. E. Crowell, East Harwich, MA in original paint with in use repair and repainting.** Wear and a section of dry rot on the lower left side. Paint is flaking under the tail. Original checks with filler on the sides. Tag on the bottom reads "Acquired from Doryman Antiques, Dennis, Mass" no brand. Outstanding form.

3500-5500

472. **Solid body black duck with glass eyes by A. E. Crowell, East Harwich, MA.** In nice old paint with OP on the head and the bill. Tail and bill chews, knot on the right cheek, neck check with filler missing.

1500-2500

473. **Large solid body Canada Goose decoy with tack eyes made in the manner of Joseph Lincoln of Accord, MA.** Probably made by the late Paul Carter from Middleboro, MA., in the 1960's. In XOC.

300-500



473



472



474



476



475

474. Chatham old squaw drake decoy beautifully painted by A. E. Crowell, East Harwich, MA. Possibly an experimental model made by Crowell or another local maker for the Monomoy brant club. Structure is perfect and the paint is delightful. Painted eyes. This decoy sat on a shelf with a rig-mate in the home of the late Crowell collector and dealer Arthur Gould of Chatham, Mass. until the 1980's.

1500-2500

475. Turned head goldeneye drake decoy by A. E. Crowell, East Harwich, MA. In excellent original conditions (XOC). The impressed rectangular brand is on the bottom. Nicely feather painted on the back with rasp carving on the breast and back of the head. Outstanding form. Purchased directly from Crowell by the same family that consigned lot 110, the Crowell wood duck dated 1935, and lot 469, the Crowell bufflehead.

9,000-12,000

477

476. Bluebill hen decoy by A. E. Crowell, East Harwich, MA. The impressed rectangular brand is on the bottom. In XOC except for some minor professional t/u to roughage at the end of the bill and to the putty around the eyes by Steven Weaver.

4500-5500

477. Three quarter size mallard drake decoy by A. E. Crowell, East Harwich, MA. In XOC. Mellow but colorful paint, slightly turned head and glass eyes. Impressed rectangular brand on the bottom. A bold, deep-bodied example.

4000-6000

478. Wonderful oversized pintail drake decoy head on an oval pine base by A. E. Crowell, East Harwich, MA. In XOC with an impressed rectangular brand on the bottom. "Mallard" in error written in ink on the bottom. Made to be used as a paperweight.

4500-6500



478



478A

478A. IMPORTANT wide solid body eider drake decoy with interesting angled chine on the lower sides. Well carved bill. Inletted head and neck along with a short shelf tail. "CEC" carved into the bottom. Nice patina. De-accessed from an important Duxbury collection. 4500-7500



479



480

479. Hollow preening NJ black duck decoy with tack eyes by Chip Alsopp. Nicely repainted in the original style. Tag on the bottom reads "Purchased, Ellsworth Maine Antiques, NH?, Paper covered Mallard Female, ca 1910, \$75". 200-400



483

480. Bold solid body swimming black duck with no eyes. Check in the neck and bottom from the breast to the mid bottom. Made entirely from one piece of wood. Small dent in the wood on the back. Made by an unknown maker from Deer Isle, Maine. 400-600

481. Chesapeake Bay canvasback drake decoy with painted eyes and a wide bill. Heavy wear to multiple layers of paint with surface chipping and a coat of varnish overall. Numerous old body checks with filler. Weight removed. 200-400

482. Lot of three items. A repainted stuffed canvas mallard with glass eyes by Armstrong Factory in good structural condition. A decoy body with cut inlet for a missing head, in old paint. A Sperry Decoy Factory body with a Wildfowler head in old paint with checks and cracked filler on the body seam. Photos on web site only. 100-200

483. Bold carving of a swimming drake surf scoter with carved eyes and nice bill detail. Good old working paint which may be original. Few minor checks along the bottom and the left side. Very nice example of a Maine surf scoter. 500-1000

484. Solid body painted eye goldeneye hen decoy in fine old paint which we feel is original. Imaginative paint pattern. An old check in the bill has been repaired with two nails tacked into the bottom of the bill. Inlet head and neck, original weight and rigging. 500-750



481

485. Preening wood duck drake decoy with glass eyes in XOC branded "Randall" on the bottom. Herbert Randall, the maker, is from Seabrook, NH. 300-500



484



485

486



486. Hollow bufflehead drake decoy with painted eyes and an inlet rectangular weight. XOC with intentionally antiqued surface. Signature on the bottom is illegible. Made in the manner of Harry Shourds. 300-500

487. RARE pair of 2/3 life size red-breasted mergansers with nicely carved crests on circular wooden bases by James Lapham. Both are signed "J. Lapham, Dennisport, Mass" and identified on the bottom of the base. In XOC. 800-1200
Provenance: Howes collection.

488. Woodcock with glass eyes, approximately lifesize. Mounted on a driftwood base. Made by James Lapham. Signed "J. Lapham, Dennisport, Mass" on the bottom of the base. In XOC. 600-900
Provenance: Howes collection.

489. Near lifesize ruffed grouse with glass eyes, dropped wing carving, and a nice fan tail on a circular wooden base by James Lapham. Signed "J. Lapham, Dennisport, Mass" on the bottom of the base. OP with a crack in the fan tail that has been glued. 600-900
Provenance: Howes collection.

The following four miniatures are from the same RI estate as lots 441-442A.

490. Flying miniature grouse by A. J. Dando and signed that way on the back of the wing. Date appears to be 1949. Roughage to wing tips, Wonderful original paint and form. 300-500



487PR

488-489

491. Early miniature grouse by Harold Gibbs in excellent original condition. Signed "HNG" on the bottom. Ca 1950. Outstanding example. 700-900

491A. Miniature quail by Harold Gibbs. Signed and dated, "HNG 1956", on the bottom. In outstanding original condition. 600-900

491B. Miniature woodcock by Harold Gibbs. Signed and dated "HNG woodcock 1955" on the bottom. Outstanding original paint. 700-900

490
491-491A-491B





492-493-494

495-496

492. Near lifesize piping plover with split wing and tail detail on a clam shell base by James Lapham. "Piping Plover, Spring", "James Lapham, Dennisport, Mass" and the "Donald B. Howes" ink stamp on the bottom of the base. 600-900

493. Near life size ring necked plover with split wing and tail detail by James Lapham. "Ring Necked Plover", "James Lapham, Dennisport, Mass" and the "Donald B. Howes" ink stamp on the bottom of the base. 600-900

494. Near life size least sandpiper with split wing and tail detail by James Lapham. "Least Sandpiper, Summer", "James Lapham, Dennisport, Mass" and the "Donald B. Howes" ink stamp on the bottom of the base. 600-900

495. Miniature shoveler hen with split wings and tail detail in XOC signed "Shoveler Hen, J. Lapham, Dennisport, Mass" and stamped with a "Donald B. Howes" ink stamp on the bottom of the base. 600-900

496. Miniature shoveler drake with split wings and tail detail in XOC signed "Shoveler Drake, J. Lapham, Dennisport, Mass" and stamped with a "Donald B. Howes" ink stamp on the bottom of the base. 600-900



497. Miniature yellowlegs with some smoke damage. Possibly an early by Elmer Crowell. Wear to the surface. Split tail and wingtips. 600-900

497A. Grouse miniature with a sharply turned head. Dates and maker unknown. Mounted on a crystal base. Nicely painted. 150-250

498. Miniature belligerent Canada goose on a driftwood base signed "H. N. Gibbs, March 1969" in pencil on the bottom. In XOC. 600-800

499. Miniature pintail drake on a driftwood base signed "H. N. Gibbs, 1969" in pencil on the bottom. In XOC. 600-900



497-497A

498-499





500PR



500. RARE PAIR OF NEARLY MINT MALLARDS BY CHARLES PERDEW. POSSIBLY PAINTED BY EDNA PERDEW. Found by Harvey Pitt in Florida where they had been stored in a bank vault. Outstanding in all respects. Both are fitted with their original Perdeew decoy weight which runs from front to back along the bottom and reads: Henry...Perdew...Ill. See these exact decoys in the top two photos on page 113 in the book by Luckey and Lewis. 25,000-45,000

Provenance: Pitt collection.

Literature: Collecting Antique Bird Decoys and Duck Calls.

501

501. RARE EARLY hollow canvas-back drake decoy by Robert Elliston, Bureau, IL. Ca 1870's. This bold example features his early most dramatic head style. Fitted with glass eyes. Great comb painting on the back and sides of the body. Knot on the left side of the body. In very good original paint with minor t/u to the black on the breast and possibly the face. Nice feather painting on the tail. Struck by a few shot.

5500-7500





502



504



503

502. Very rare raised wing mallard decoy with glass eyes by Charles Perdew, Henry, IL ca 1920. Original Perdew weight on the bottom. In XOC with comb painting on the back and sides. Light wear to the edges of the wings where they rise off the back. Ice collects in this area and when the sun melts the ice, water pools there. Over time the paint will show wear in that area. Small sliver of wood missing from the left side of the bill. Light wear in the tail area. 5000-7500

503. Hollow mallard decoy ca late 1800's by Robert Elliston, Bureau, IL. In good OP with wear and some t/u to filler on the breast, neck seam, and the bill over a knot. This is the exact decoy pictured on page 115 in the middle photo in the book by Luckey and Lewis. Carved with the head slightly forward in a swimming position which is very rare. 3000-5000

Provenance: Pitt Collection

Literature: Collecting Antique Bird Decoys and Duck Calls.

504. Hollow oversize mallard decoy ca 1920's by Walter "Tube" Dawson (1882-1955). In nice old gunning paint. Wear on the surface and roughage on the left tip of the bill and wear on the top of the head.

Provenance: Pitt Collection

500-750

Literature: Collecting Antique Bird Decoys and Duck Calls.



505

505. Hollow pintail decoy with glass eyes by Clarence Jacobsguard (1911-) Gardner, IL. It is estimated that he made decoys only during a 20 year period. Appears to be good OP. "C. J." impressed into the original weight. Stringing eye is attached through a hole in the front of the weight. V shaped bottom. See page 115 in the Luckey and Lewis book. This is the exact decoy picture in the top photo. This is also the exact decoy pictured on page 176 in Decoys and Decoy Carvers of Illinois by Parmalee and Loomis.

Provenance: Pitt Collection

2000-4000

Literature: Collecting Antique Bird Decoys and Duck Calls.

506. Rare hollow bluebill decoy by George Sibley, Chicago, IL. ca late 1800's. In original paint which is in very good condition. The original paint has a little wear on the body. Most of the wear and loss of paint is oddly in the neck and head area. Please see photos in the catalog and on our web site. Typical incised inlet bill. Branded "CARSON" and "TRAILL" on the bottom. 2000-3000



506



507



508



509

507. **RARE hollow sleepy-eyed bluewing teal drake decoy with carved crossed wings by Jack Musgrove in XOC.** Unused with a few very minor surface rubs and dents. Signed on the bottom in ink "Jack Musgrove, Pre 1940" and branded "JM". Jack Musgrove wrote a chapter in "Duck Shooting in the Mississippi Flyway" by Eugene Connett. 2500-4500

508. **Rare turned head canvasback drake decoy by August Moak, Tustin, WI. In XOC with sealer.** Tag on the bottom reads "Purchased in Iron Mt. MI. from Vince Granger. His Grandfather August Moak, Tustin, WI between 1885-1900 was the maker on the shores of Lake Poygan." In the Luckey and Lewis book on decoys, this exact decoy is pictured on page 488 and 489 on the top left of a coffee table made in the form of a boat. Also prominently pictured on the bottom of page 137 in the same book. 5000-7500

Provenance: Pitt Collection

Literature: Collecting Antique Bird Decoys and Duck Calls.

509. **Hollow painted eye pintail drake decoy ca early 1900's from the Illinois River in fine original paint with wear to the tail edges and light crazing.** Tight neck check. May possibly be by Perry Wilcoxon of Liverpool, IL.

Provenance: Pitt Collection

2000-3000

Literature: Collecting Antique Bird Decoys and Duck Calls.

510. **Very rare pair of swivel head mallard decoys by Bernard Ohnmacht, Lafayette, IN ca 1940.** In XOC with just a few minor flakes of paint missing along the neck edge of the drake. Unusual metal sleeve on the bottom to accept a weight. Branded "GBM" on the bottom of both. In great paint with the usual minor imperfections that are found on antique decoys. Important pair of decoys by a talented and imaginative maker. 6000-7500

510PR





511



512



513



514

511. Canvasback drake decoy with wonderful Dudley type form. In very old paint with crazing and flaking on the surface. Check on the top of the head and the neck. No eyes, Struck by shot. Hot branded "FGF" on the bottom. 400-600

512. Canvasback drake decoy by Madison Mitchell, Havre de Grace, MD in XOC with a few tight age checks in the body and a slightly turned head. Original weight.

250-450

513. Solid canvasback drake decoy with great form and a scraped surface. Two checks in the neck with a bit of wood missing. Tag on the bottom reads "Barnard Decoy". 200-400

514. Madison Mitchell Canada goose decoy in XOC. Weighted. Narrow check in the center of the back, neck filler cracked.

300-500

Provenance: Pitt Collection

515. Madison Mitchell bluebill drake decoy with painted eyes. Weight removed, stringing eye intact. Branded "JEG" on the bottom. Two brass tacks on the bottom with "18" and "43" impressed. Mellow patina. Minor rigging line marks and surface rubs. In XOC

300-500.

Provenance: Pitt Collection



515



516

516. Slightly oversize sleeping bluebill drake decoy by Charles "Speed" Joiner, Chestertown, MD. In superb original condition with a minor rub on one side. Made as a special order for the consigners shooting rig by Mr. Joiner. This decoy makes a statement for Mr. Joiner as one of Maryland's great talents. It is an absolutely marvelous design featuring his patented textured upper body paint. 400-600

517. Tucked head resting bluebill drake decoy by Charles "Speed" Joiner, Chestertown, MD. In near pristine condition despite the fact that it has been gunned over. Made as a special order for the consigner by Mr. Joiner. 400-600

518. Pair of bluewing teal decoys by Paul Gibson, Havre de Grace, MD. In XOC with a few flakes of paint off the edge of the bill. Made in 1971. Both appear unused. 600-900

517



518PR



520-521

519



522

523



519. Green wing teal hen decoy signed by Clarence Bauer, Havre de Grace, MD. In XOC with a few flakes of paint from the edge of the bill. Rigged for use. 200-300

520. Miniature black duck decoy by Robert McGaw, Havre de Grace, MD. In XOC. Beautiful scratch painting with tiny painted eyes. Typical rectangular base with felt on the bottom and an elevated stand. 500-750

521. Miniature pintail hen decoy by Robert McGaw, Havre de Grace, MD. Nice feather detail with tiny painted eyes. Typical rectangular base with felt on the bottom and an elevated stand. XOC except for a professional reglue and t/u to a neck check. 500-750

522. Wonderful canvasback drake decoy by noted carver Cameron McIntyre in XOC. Painted eyes and intentional light wear. 450-650

523. Oversized hollow snakey head black duck in XOC by noted folk art carver Mark McNair. Head and neck are beautifully carved of one piece of wood. Made without eyes. Outstanding decoy from a small special order rig. 700-900

524. Very rare early red-breasted merganser drake decoy ca late 1800's to the early 1900's by H. Keyes Chadwick, Oak Bluffs, Martha's Vineyard, MA. In OP with a thin coat of sealer, probably wax, on the surface. The bill has a charming old make-do fishing line repair to the bill. Check on the left side of the neck and a few narrow body checks. Struck by a few shot. Chadwick mergansers from this early period and with original paint rarely surface. From a collection assembled 30 to 40 years ago. 6500-9500

524





525

525. Early swimming red-breasted merganser hen decoy with a strong attribution to Joseph Lincoln ca late 1800s with a solid body and circular eyes with tacks or shoebutton eyes. In wonderful weathered original paint with crazing and some shot scars. Knot on body behind the neck and a few age checks in the tail. Weighted for use. This form has been attributed to Badlum in the past as Badlum had some of these decoys in his shooting rig. A few collectors including this cataloger and the late Robin Starr felt that the refined Badlums were early decoys carved by Joseph Lincoln of Accord, Mass. Some of the other decoys from the Badlum rig were similar but much more angular and inferior to the two best Badlum rig oldsquaws. Both Robin Starr and I felt that these lesser carvings were probably carved by Badlum and the two more refined decoys were probably purchased from Lincoln and used as pattern models. Badlum lived in the Boston area and was an early and well known maker of early American furniture. Bill tip restoration by Steven Weaver.

9000-12000

526. Oversized solid body red-breasted merganser drake decoy with glass eyes and a carved crest in the swimming pose probably by the Folger Family, Nantucket, MA. In very nice original paint with moderate surface wear. Maybe some old t/u of the black on the body and the white on the neck. Body has a few knots and shot holes, stress check in the breast from a nail used to attach the head, a thin check on the right side of the neck and a knot is missing the wood on the bottom extending to the base of the breast. 3500-5500

527. Wonderful early style redhead drake decoy with glass eyes by H. Keyes Chadwick, Oak Bluffs, Martha's Vineyard, MA. Inlet circular weight has been removed. Paint has been restored in the original manner. 800-1200

528. Lot of two decoys. Very interesting black duck decoys from Martha's Vineyard, MA with glass eyes and slightly turned heads. Appear to be in OP with t/u at the neck. Few knots on the surface with filler. 450-750

526



527



528(2)



529



531



532

530



533

529. Outstanding turned head redhead drake 1930-1940 with glass eyes by H. Keyes Chadwick from the Foote rig and so branded on the bottom. Foote was one of Chadwick's best customers. In excellent original condition with a few minor marks on the head and a typical bottom check from the lower breast along the center of the bottom to the back. Bill has been professionally restored.

2500-4500

533. Turned head solid-bodied red breasted merganser hen decoy with carved crest and eyes in XOC by Jack Brayton, Westport, MA., ca 1930. Thin grain line check on the left side of the body.

1200-1500

530. Solid body turned-head bluebill drake decoy by Henry Keyes Chadwick, Oak Bluffs, Martha's Vineyard, MA. In XOC with very light wear. Circular inlet weight, check from the breast to the tail along the bottom. There is a small stain on one side that could be cleaned.

2500-4500

534. Loon decoy by Paul Casson, Ausable Forks, NY in XOC. Signed on the bottom in ink. Mr Casson is the author of a book, "A Decoy Primer"

250-450

531. Red-breasted merganser drake decoy by Joe Thomas with a carved crest, glass eyes and "JMT branded into the bottom. Tip of the bill and edges of the crest are damaged. In OP with wear and t/u on the end of the tail. Signed in ink on the bottom "J. M. Thomas, Edgartown, Mass" with "Martha's Vineyard" stamped beneath.

500-1000

534A. Early Luther Nickerson merganser hen ca early 1900's in worn original paint. Featuring relief carved wings and a paddle style tail. Nickerson made decoys commercially and lived in Cotuit Ma. on the south shore of Cape Cod. This decoy is from the family shooting rig.

600-900

532. Solid body hooded merganser drake decoy by Joe Thomas of Edgartown, MA. with glass eyes and a bottom board. OP with wear and damage to the edge of the tail and tip of the bill. Made for the same Vineyard consignor as the prior lot.

500-1000

534
534A



535PR



536PR



537PR

535. Pair of merganser shadow decoys with keels and nice rounded shaping detail, attached to flotation boards attributed to Luther Nickerson, Cotuit, MA ca 1920's. In very good original condition. A unique style that Nickerson made only a few of. Brass tack eyes. Lead weights on the bottoms of the keels. 300-500

536. Pair of goldeneye shadow decoys with keels and nice rounded shaping detail, attached to flotation boards by Luther Nickerson, Cotuit, MA ca 1920's. In good original paint. Brass tack eyes. There is damage and wood loss to the keels. Lead weights are on the bottoms of the keels. 300-500

537. Pair of goldeneyes by Luther Nickerson, Cotuit, MA ca 1920's from the Butler Rig. Drake has glass eyes, carved wing, and bill detail. Nice old OP with t/u on white areas on the sides and the face patch. Few tight age checks on the body. The hen has glass eyes, carved wing, and bill detail. Nice old mostly OP. Few tight age checks on the body. Both have the typical Nickerson carved wings. 750-1250

538. Hand made goldeneye hen decoy from Cape Cod with 2 or 3 body checks and the original weights on the bottom. Nice early primitive decoy. 200-300

539. Solid body red-breasted merganser hen decoy by Harry Davis, Falmouth, MA ca 1930's in OP with age darkening and surface wear. Painted eyes and original rigging. Two tight neck checks, a small knot on the body. Struck by a few shot. Original weight. Nice early example by this maker. 400-600

540. Rare early black duck decoy with a solid body and a bottom board by Howland, Waquoit, an area of East Falmouth, Ma. Only known example of a black duck by this maker. In XOC with light wear. 300-500

541. Small solid body, glass eye bluebill hen decoy possibly from Martha's Vineyard with an interesting cross inlet weight on the bottom. Heavy wear and crazing to the surface, wonderful form. 300-500



538



540



539



541



541A

541A. **RARE three-piece vertically seamed 19th century golden plover by Lothrop Holmes.** In outstanding, virtually mint paint. Two tiny nostrils are carved in the top of the original bill which had the lower half spliced on professionally by Steven Weaver. From a famous old Duxbury collection de-accessed many years ago that contained a pair of Holmes mergansers that are now in the American Folk Art Museum in NY. This decoy has been out of circulation for 50 or more years. Doctor George Ross Starr's turnstone was obtained directly from this collection. See page 46 in *The Great Book of Wildfowl Decoys* by Engers for a photograph of two Lothrop Holmes shorebird decoys. These examples show the diverse patterns that Lothrop Holmes worked from. The golden plover in our sale was made in the same style as Doc Starr's ruddy turnstone, while the golden plover on page 46 is carved from a totally different pattern. 45,000-75,000



542

542. **Great hollow two-piece horizontally seamed hollow black-bellied plover decoy with split tail and a subtle carved suggestion of wing tips on the top of the body.** Strong attribution to Thomas Wilson of Ipswich, Massachusetts. Rig mate to lot 142 on day 1 of this sale. This is the other plover found by the late Donald Howes in the mid 1900's on the North shore of Massachusetts. Glass eyes. Few flakes of paint from the front of the head and along the seam line. Form, paint, and outstanding patina. In a class of it's own. Hollowed to a thin shell. 45,000-75,000

Provenance: Howes collection.



543

543. Hollow two-piece peep decoy with outstanding paint detail and lovely cobalt blue glass Sandwich glass eyes. In virtually mint condition. Mounted on two wire legs, horizontally seamed. Imaginative paint design. Attributed to the Chipman family of Sandwich, Mass. Found in a Truro-Eastham cellar on the far end of Cape Cod in the mid 1900's by Donald Howes. One of the finest peep decoys we have ever seen. Unlike the peep by the same hand in yesterdays sale, this example does not have an open bottom. The two wire mounting legs fit inside two holes in the bottom of the decoy.

15,000-25,000



544

544. Rare early ca late 1800's "bull" head plover decoy attributed to the Chipman family. Hollowed to a thin shell. There is a metal bracket fitting and sleeve in the bottom to accept a mounting stick. Body is made of two pieces of wood with a horizontal seam. In nearly flawless condition as are most of these exquisite hollow 19th century shorebird decoys.

10,000-15,000

545. Hollow feeding golden plover ca late 1800's attributed to the Chipman family. Open bottomed as are three of the other "Chipman" shorebirds. In XOC in all respects. Very nice mellow patina.

5000-7500



545



546

546. **RARE tack eye flattie black-bellied plover decoy by A. E. Crowell, East Harwich, MA.** In XOC. Tiny rub at the wing tip. 7500-9500

547. **Very rare gunning curlew decoy by A. E. Crowell, East Harwich, MA.** in OP with heavy crazing and flaking to the surface. "M" carved into the bottom below the stick hole and "Hudsonian Curlew, Elmer Crowell, Mass" in ink under the tail. Additional letters in pencil are illegible. Great bold form with glass eyes and a split tail. Bill may be original or an early replacement. 25,000-35,000

548. **Split tail Hingham school black-bellied plover ca 1890-1910.** In winter plumage. In very good OP with large rusted tack eyes and a "Sears" brand impressed in three places on the bottom. Original bill, struck by shot. 2500-3500



548-549



547

549. **Bold carving of a yellowlegs decoy ca 1900 by Joseph Whiting Lincoln of Accord, MA.** Smooth type, made with tack eyes. In very nice original paint. The bill may or may not be a working replacement. 3000-4500

550. **Early running golden plover decoy by the Morton Family, Hingham, MA.** In good old original gunning paint with some in use touch up. Small gold dots on the back and an interesting pegged repair to a sliver on the top of the head. Great design and carving with a thin angled neck and a ridge along the center of the back. Struck by shot. Three stick holes in the bottom. 4500-6500



550



551-552



553

551. Early willet decoy with painted eyes and split tail from the North Shore of Massachusetts in XOC. Made and used by Louis Oulette and signed "L. O." and dated "1914" in pencil on the side of the bird. Neck check has an old repair. The only other examples from this rig were donated to the Peabody-Essex Museum in Salem, MA. 1500-2500

552. Early willet decoy with painted eyes and split tail from the North Shore of Massachusetts in fine original paint with a thin milky wash over a small area of the white breast paint. Slightly larger than the rigmate in the previous lot. Old neck break has had an in use repair. Made and used by Louis Oulette and signed "L. O." and dated "1914" in pencil on the side of the bird. 1500-2500

553. Split tail black bellied plover decoy with glass eyes from Massachusetts in good OP with some t/u to the black along the wing outlines. Wear and some paint flaking on the top of the head and struck by a few shot. Eyes are cracked. 1800-2400

554. Split tail yellowlegs decoy from the Dartmouth, MA, Newport, RI area. Shot over at Sakonnet Point in RI near the Mass border. Made of three vertical sections of wood pegged together. OP with beautifully painted white dots in a pattern over the back. Painted eyes. Struck by a few shot. Light wear and a few tiny chips of paint along the seam lines. 1500-2500

555. Split tail yellowlegs decoy from the Dartmouth, MA Newport, RI. Area. Made of three vertical sections of wood pegged together. OP with beautifully painted white dots in a pattern over the back. Painted eyes. Struck by a few shot. Light wear, a few drips on the right side near the tail, and a few tiny chips of paint along the seam lines. 1500-2500

556. Redbreasted knot decoy by Harry Shourds, Tuckerton, NJ in OP. Overpaint removed. Nice feather painting on the back and head. Painted eyes, two or three tiny knots in the surface of the wood. 3000-5000

556



554-555



557-558

557. Split tail New England yellowlegs decoy, ca 1900, with wide plump body and angle carved tail. In very old working paint on the breast with painted eyes. Back paint and bill paint looks original. Bill, head, neck and body made of one piece of wood with a dowel from the top of the head into the breast to strengthen the neck. Beautifully painted surface with crazing. Thin check in the bottom that extends into the lower back area with a few chips of paint missing along the check. 1800-2400

558. Split tail New England yellowlegs decoy ca 1900, with extra wide plump body and angle carved tail. In fine early OP with painted eyes. Bill, head, neck and body made of one piece of wood with a dowel from the top of the head to the breast to strengthen the neck. Beautifully “dot” painted surface with crazing and some paint loss. Check in the bottom when made with two dowels holding it in place. 1800-2400

559. Outstanding split tail yellowlegs decoy with Lothrop Holmes features. Tack eyes and the original bill. In very good OP with a thin wash of over paint on the breast probably by the same hand. Nicely painted feathers on the back. Struck by a few shot. Stringing staple under the tail. 4500-5500

560. Wonderful early example of a split tail yellowlegs decoy ca 1880's to 1900 by Joseph W. Lincoln, Accord, MA. In OP with tack eyes and the original bill. Typical soft feathering on the breast, neck, and head. Nice dry patina. There is a fair amount of paint loss along the grain lines on the back and the left side and a check in the lower tail edge. Struck by a few shot. 1500-2500

561. Great example of a NJ ruddy turnstone decoy with painted eyes and a reshaped bill. Old working paint, some appears to be OP. Struck by a few shot. 600-900

561A-561B



559



560-561

561A. Boldly carved black-bellied plover ca late 1800's with carved eyes and relief carved wings in Spring plumage by the Verity Family, Long Island, NY. Struck by numerous shot, mostly OP with wear to wood in places on the bottom, back and the head. Breast appears to be nice old in use t/u. very appealing form. “V” incised into the bottom. 3500-5000

561B. Carved wing, carved eye black-bellied plover decoy ca late 1800's in Winter plumage by the Verity Family, Long Island, NY in good OP with some crazing and chipping mostly on the bottom. Struck by shot. Original bill. Branded C. V under the tail possibly for Clinton Verity. 3000-5000





561C
561D

561C. Rare early Massachusetts yellowlegs decoy with painted eyes. A “wind-bird” that is hollowed from the bottom and open. Wonderful old mellow paint with some original and some minor flaking. Original bill with a tight check, struck by shot.

1800-2400

561D. Plump golden plover decoy with vestiges of sealing wax eyes. OP on the lower sides, old working paint on the remainder with heavy wear to the top of the head and tail. Struck by shot. Bill appears to be original. Possibly an early model golden plover design by Lothrop Holmes.

3500-5500

561E. Curlew decoy with carved eyes ca 1890-1910. Possibly a New Jersey or eastern shore of Virginia decoy. See color plate LXXIII in Shorebird Decoys of Virginia by Fleckenstein for a photo of a lowhead curlew similar to this example. Excellent early original surface with a few areas of crazing and loss of paint bubbles. Approx 17 in long.

3500-5500

561F. Split tail golden plover in winter plumage ca late 1800's. Possibly by Lothrop Holmes with painted eyes, original bill, and remnants of wonderful gold dotted paint on the back. Heavy wear to the surface with paint flaking. Struck by shot with a few scars on the back. Great form. See lot 561D for a similar form.

1500-2500



561E-561F

561G. Split tail plover decoy ca early 1900's by Joseph Lincoln with tack eyes. Body made from 3 vertically laminated pieces of wood. In excellent original condition. Few flakes and rubs on the surface on the neck, breast and sides. Struck by a few shot. From the rig found in the 80's in Blue Hill, ME. Very fine feather painting.

5000-7000

561H. Outstanding yellowlegs decoy with painted eyes, a nail bill and outstanding original paint with a nice mellow patina. Struck by a few shot. Approximately one inch wide. Flat sided but not what one would refer to as a flattie shorebird.

1800-2200

561I. Flat-sided, yet full bodied yellowlegs decoy with painted eyes and a nail bill. In excellent original condition. Nice mellow patina. Knot on the right side. Struck by shot, few minor dings at the edge of the tail and a small indentation on the top of the head.

1800-2200

561H-561I



561G



564



565

564A



562. Lot of four decorative shorebird decoys. A pair of decorative sanderling decoys with branded "H. Monk" in XOC, surface intentionally aged. A chubby peep decoy made in the Duxbury style branded "WEK" behind the stick hole. Decorative lesser yellowlegs decoy with glass eyes by Dick Barke. Bottom reads "Barke, 1983, #216" Original tag attached with description and carver information. In XOC, aged surface. Pictured on our web site. 300-500

563. Lot of three items. A peep decoy on a stand made by Monk and purchased on Cape Cod in the 1980's. Nicely painted. A yellowlegs decoy on a stand in XOC made in the antique manner. Signed "Aaron Peacock" on the bottom. A preening peep decoy on a stand in XOP. Signed "McLay" on the bottom of the base. Pictured on our web site. 200-300

564. Rare oversized (23 inches long) feeding stick up black duck gunning decoy with a strong attribution to "Shang Wheeler". Made with a cork body and a pine head and tail. In XOC with no eyes and a nicely fitted metal sleeve in the body for a mounting stick. Wonderful form. Appears to be a faded "Shang" signature on the bottom of the bird. From the Brinker estate in Ridgefield, CT. 2500-4500

564A. Bold hollow white wing scoter decoy with glass eyes by noted decoy carver Roswell E. Bliss, Stratford, CT. (1887-1957). In XOC with the typical teardrop weight on the bottom. See Connecticut Decoys by Marshall, Knight and Chitwood, P63 for a photo of a similar decoy. 1200-1500

565. Wonderful oil on board painting of two yellowlegs, one in flight, and a marsh scene. In XOC in a period frame. Painting needs cleaning and there is minor damage to the lower right edge of the frame surface. Signed center bottom "Shang" for Shang Wheeler, Stratford, CT decoy maker and artist. 13 1/2 x 17 1/2 sight size. Probably from the Brinker estate as it came from the same source as the feeding black duck, lot 564. 4500-7500

566. Cork bodied black duck decoy with glass eyes made in the manner of the Stratford school of carvers. In very good OP with wear and a few kernels of cork missing from the tail. Nicely scratch painted head. 300-500



566



567



568



569PR

567. Old squaw drake decoy from the Stratford school with a solid body and an attached bottom board. In old working paint, painted eyes, head is loose with a few scratches on the bill. 200-300

568. Gracefully carved pintail drake decoy with textured paint on the body, an inserted wood tail, carved wing detail and a stretched swimming head. A few thin checks in the body and a tight partial check in the neck. Paint appears to be original. 1500-2500

569. Rare pair of sleeping Wildfowler Factory mallard decoys from Quogue, LI. In XOC. Purchased by the consignor directly from the factory. Original keels, no brand. *Provenance:* Fosse Rig 400-600

570. Wildfowler widgeon hen decoy. In XOC with glass eyes, keel, nice feathering, cracked eyes. Wear on bill edge. *Provenance:* Pitt collection 300-500



570



571PR



572



573



574

571. Pair of Wildfowler Atlantic Coast model mallards. 18 1/2 in long. In fine original paint. Some wear on the drake's head in places. Hen has a small dent on the edge of the tail. Nicely grain painted on the head of the hen. These are the exact decoys pictured on page 476 in the Luckey and Loomis book. 400-600

Provenance: Pitt collection

Literature: Collecting Antique Bird Decoys and Duck Calls

572. White wing scoter by Wildfowler. In OP. Glass eyes. Some roughage on both sides with t/u Chip under the bill and a small chip on the tail. Original keel. This is the exact decoy pictured on page 231 in the Luckey and Lewis book.

Provenance: Pitt collection

250-450

Literature: Collecting Antique Bird Decoys and Duck Calls

573. Wildfowler Factory gull decoy used in Ohio as a confidence decoy and purchased directly by the consignor from the Quogue, LI factory. In excellent original condition with light wear. Some surface dirt and dents. Original keel.

Provenance: Fosse Rig

500-1000

574. Smaller decorative, 2/3 lifesize, Wildfowler Factory black duck decoy. Probably made as a presentation piece. Exceptional paint detail, exceptional patina. XOC. 200-300



575



577



577A



576

575. Turned head Wildfowler wood duck hen decoy with glass eyes and an original keel. In XOC with a few rubs and crazing on the surface. Identical to the Wildfowler hen wood duck pictured on the cover and just inside the cover of North American Factory Decoys by Ken Trayer.

300-450

576. Solid body Wildfowler Factory turned head wood duck drake decoy. In XOC and branded "Wildfowler Decoys, Babylon NY, since 1939" and "Painted by Ann Madsen 1985" written on the bottom.

300-450

577. Turned head solid body mallard drake decoy possibly by the Wildfowler Factory in Babylon, NY. In fine OP with a few chips off the bill and the edge of the tail.

100-150

577A. Gundelfinger Factory black duck decoy in good OP with a little wear with some paint off the edges of the bill. Glass eyes are cracked. Weight removed.

200-300



578

578. Very rare Bates Factory (1937-1945) stuffed canvas mallard drake decoy in XOC with the circular factory stamp on the bottom. This is the exact decoy pictured in North American Factory Decoys by Ken Trayer on the bottom of page 55. Rigged for use, but little used.

400-600

579. Evans Factory mallard drake decoy. In XOC. Great paint. The "Evans Decoy" stamp is on the bottom. The white on the neck seam is possibly touched up. Fitted with quality glass eyes. A few minor rubs, and a drip of varnish shows on the bottom edge near the rear. See photos. Outstanding example.

1200-1400

580. Early Factory bluewing teal drake decoy with a circular inlet weight on the bottom. Neck filler is cracked with some missing, Knot on the left side of the body has cracked filler that has flaked. Light coat of sealer.

400-600

580A. Peterson redhead drake ca late 1800's in OP except for professional t/u by Paul Fortin to black areas on the breast and neck filler. Rare early decoy.

1500-2500

579



580



580A





581



583



582



584

581. Back Bay Model redhead drake in excellent original condition with the usual imperfections and possible very minor in use touch up. Neck filler has had some loss and in use filler repair with t/u. This is the exact decoy pictured in two photos in the Luckey and Lewis book on page 168.

Provenance: Pitt collection 4500-6500

582. Oversized hollow Mason Factory Premier black duck decoy in XOC. Nearly perfect. Struck by shot. See other photos on web site. Outstanding decoy. 3500-6500

583. Mason Factory Premier Grade canvasback drake decoy in excellent original condition. Line check in the tail. Cracked neck filler, struck by a few shot. The owner's brand has been removed from the bottom with a gouge. Very nice example. 2000-2500

584. Mason Factory Premier Grade canvasback hen decoy in good OP. Check in the back from the neck to the tail. A sliver is off the right front side of the bill, and a knot is visible on the lower right side. Seam line visible, struck by shot. The owner's brand has been removed from the bottom with a gouge. 1800-2200

585. Mason Factory "Seneca Lake" model canvasback drake decoy in good OP. Light wear to the sides, glass eyes and the weight has been removed. Neck filler cracked with some missing. Struck by a few shot. Approximately 2/3 of the bill is a replaced in the original style. 500-750

586. Mason Factory Challenge Grade black duck in XOC with glass eyes. There are a few minor flakes off the neck filler, otherwise near perfect. Struck by a few shot with one hitting the edge of the bill near the tip. Narrow check in the bottom. This is the exact decoy pictured on page 162 in two photos in the Luckey and Lewis book. One photo shows the Challenge stamp on the bottom. 4500-6500

Provenance: Pitt collection
Literature: Collecting Antique Bird Decoys and Duck Calls

585



586





586A



588



587

586A. Early snaky head Mason Factory Challenge Grade canvasback drake decoy. In excellent original paint with missing neck filler. Surface wear on the head and bill and along a check from the breast to the mid back. Tight check on the lower right side. The “DENEGRÉ” brand is on the lower side. This is a Louisiana gunning brand. 1500-2500

587. Hollow Mason Factory Challenge Grade bluebill drake decoy in fine original paint with average in use wear and “possible” t/u to some of the black on the breast. Struck by a few shot. Neck filler cracked. Narrow check on the right side of the breast. 800-1200

588. Mason Factory Challenge Grade mallard drake in fine original condition with a typical tail chip, few shot scars, and a line check from the neck to the tail under the paint when made. Filler in the check has shrunk and depressed. This is the exact decoy pictured on page 171 in the book by Luckey and Lewis. 2500-3500

Provenance: Pitt collection

Literature: Collecting Antique Bird Decoys and Duck Calls

589. Mason Factory challenge grade widgeon drake in original paint with some overpaint remaining. It looks like overpaint was removed at some point. This appears to be the one pictured on the top of page 166 in the Luckey and Lewis book. Referred to there as a Challenge grade Back Bay model. 2500-4500

Provenance: Pitt collection

Literature: Collecting Antique Bird Decoys and Duck Calls

590. Extremely rare Peterson Factory Barrows goldeneye drake decoy in good mostly OP. There is a light coat of overpaint on the white breast that goes partially over the original on the body. Face and wing patches are original along with the black. Glass eyes, light overall wear. 3500-5500



589



590



591



593



594



592



595

591. Extremely rare Mason or Peterson Factory white wing scoter with a solid body and glass eyes in XOC with minor imperfections. Knot on the left side of the head, wear to the wood in a small area on the top of the head, the lower sides, and the very edges of the tail. See bottom of page 161 in the book by Luckey and Lewis for a photo of this exact decoy.

5500-7500

Provenance: Pitt collection

Literature: Collecting Antique Bird Decoys and Duck Calls

592. Hays Factory mallard drake decoy in good OP with some minor t/u to the replaced neck filler and a few scrapes and dings to the surface on the tail. Glass eyes, narrow check extends from the right side of the breast to the tail. Few open checks in the bottom. Struck by a few shot.

400-600

593. Very large Mason Factory Premier Grade Atlantic Coast model solid body black duck decoy in old working paint with OP on the cheeks and under the overpaint. Tail wear and typical check on the bottom from the breast to the tail.

300-450

594. Mason Factory Premier Grade slightly oversized solid body black duck decoy in old working paint with original paint on the cheeks, wing flashes and the bill. Tail chip was renailed and glued. Few narrow checks on the body, strip lead weight.

250-350

595. Rare Peterson Factory green wing teal drake decoy ca late 1800's. In excellent restored condition. Some paint "possibly" original. Glass eyes. This is the exact decoy pictured on top of his "boat shaped" coffee table on pages 488 and 489 in the Luckey and Lewis book. Said to be Harvey's favorite decoy.

1000-1500

Provenance: Pitt collection

Literature: Collecting Antique Bird Decoys and Duck Calls

596. Pair of stylish Mason Factory Detroit grade glass eye pintails from a California hunting rig. In excellent original paint with minor imperfections. Both have neck filler missing with some remaining in the neck seam of the hen. The hen has a large O brand on the bottom. Wear to the tip of the tail. The drake has a piece chipped off the right tip and side of the bill. The drake has an open narrow check along the left side of the body. Narrow checks in the bottom have had staples tacked across them.

2000-3000



596PR



597



598



599



604



597. **Mason Factory Premier Grade Canada goose decoy with glass eyes in excellent restored condition.** Glass eyes, wide check in the bottom with filler cracked and missing. Some minor loss to neck filler. Outstanding form. 1500-2500

598. **Mason Factory Premier Grade bluewing teal decoy.** Body paint appears to be original with t/u on the top of the tail. Head may be a replacement in the original style. 300-500

599. **Blue-wing teal drake.** May or may not be a Mason Factory Challenge grade decoy in excellent restored condition with intentional ageing. 250-450

600. **Lot of four repainted Mason Factory decoys.** They “appear” to be a Detroit Grade Glass Eye mallard drake, a Mason Detroit Grade Glass Eye merganser, A Mason Factory Tack Eye widgeon, and another Mason Factory widgeon ?? All in rough condition. Pictured on web site only. 300-450

601. **Animal Trap Factory solid body turned head goldeneye drake decoy in worn OP.** Glass eyes, original lead weight. Piece of wood chipped off one side of the neck. Pictured on web site only. 75-125

602. **Lot of two Pascagoula decoys in old working paint with the head on one a replacement.** Solid body. Pictured on web site only. 50-75

603. **Black duck decoy by an unknown factory.** Similar in some ways to the Herter Decoy Factory but earlier than those that are commonly found with the brand. In near mint condition except for some filler loss in the neck seam. Photo on web site only. 150-250

604. **Rare early ca 1789 powder horn with surface engraving that includes a man shooting a shorebird, other birds and animals, a schooner and mermaid, a heart and numerous geometric zoomorphic designs and figures.** French verse “At Loudet the 9th November, year of the King 1789, Allexi Doucedé” Hearts and mermaids are strongly American symbols. Few areas of cracking along the edges with small amount of horn missing. Great patina. 2500-3500

605. **Long powder horn (16 ½ inches) with a carved cherry wood end and wonderful carved decorations.** Geometric bands circle the narrow end. One side shows an early sailing ship with Indians in canoes with paddles and a rectangle with “Yonkers, 1834, Half Moon” carved inside. On the reverse side there is a series of small houses, forts and flags along with a river and ships anchored near the edge. “New Amsterdam, 1679” is carved in the river. The horn is in XOC with a few chips to the wooden end. 1200-2500

605





606(4)



607



609

606. Set of four very nicely framed original colored drawings of a comical nature probably used as sporting magazine articles or cartoons. No visible signatures. 13" x 13", In XOC. 300-450

607. Oak shot dispenser with eight size compartments with glass fronts. Two drawers below 25 W 9.5 Deep and 12 1/2 high. Includes various sized shot. 500-750

608. Rare repair kit for an Old Town Canoe. Cylinder container with original contents ca 1930's. Front reads "Repair Kit, Color Dark Green for Canvas Covering of Canoes and boats. Put Up By Old Town Canoe Co. Old Town, Maine, U.S.A." XOC. Photo on web site only. 100-150

609. Pair of oval matted shadowbox framed life sized hanging birds. Subject is made of paper cut and mounted in three dimension on a black background. Very realistic. 11" x 16" inside measurement. XOC. 1500-2500

610. Lot of two pieces. Etching of a grouse head signed and dated "W. J. Schaldach, imp, 1935, Seasons Greetings" below the image in pencil. XOC. 5 1/2" x 7", nicely framed and An etching of five Canada geese close to and two strings of geese in the distance. Titled "Canadian Geese" lower left and signed "Lionel Danching" lower right in pencil. 13 3/4" x 10 3/4" sight size, nicely framed. 300-450

611. Lot of two items. A watercolor of two ducks flying in silhouette with marsh reeds. Signed lower right "Les Kouba". Nicely framed and a pencil drawing of a string of Canada geese with one larger goose in the foreground signed by the artist Les Kouba on the lower right. 5 1/8" x 6 3/8", nicely matted and framed. XOC. 300-500



610(2)



611(2)



612

612. O/C of a flying redhead drake signed lower right "D. Jackson". 19" x 23". Back of canvas and stretcher reads "To Bob and Juanita from Daphne Jackson, Xmas 1964" Assateague Marsh, Green River Run Gun Club by Daphne Jackson, 1960". Good condition with a few surface rubs. Nicely framed. 350-550



613

613. O/B of a Chesapeake Bay retriever with a mallard presenting to a hunter with a gun. XOC, matted and framed, 12" x 16 1/2" sight size. Signed lower left Ralph Crosby Smith probably done for a sporting magazine cover. Nicely framed. 2500-3500



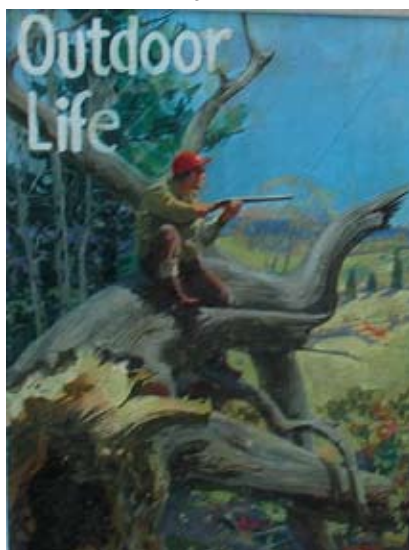
614

614. O/B of man sitting in driftwood roots of a tree with a fox in the background and "Outdoor Life" title in the upper left. Used as a cover for the magazine. Attached to the back is the original study photograph for the painting. Signed Charles LaSalle lower left. Wrapped and matted. 8" x 11", XOC. 350-550



615

615. Etching of four dead snipe being held by the legs. Signed and numbered "Snipe" "6/60" and "G. Allen" below the image. 3" x 4", nicely framed. 250-350



617. Watercolor of "Bears in Camp" with three bears invading a campsite with a tent and three men running for the safety of a vehicle. Backed and wrapped. Upper left reads "McManus Article" signed on the upper right "John Scott, 76" good condition. 150-250

616. Limited edition print, 49/100, in pen and ink with color wash of four geese flying over marshland. 19" x 24" sight size. Matted and framed with a copy of the Yankee Magazine, November 1979 cover the original was done for. Good condition. No visible signature. 250-450



616



617



618



620-621

619



622

618. Oil painting on Masonite of a string of eider ducks flying. Framed, signed lower left, "T. A. Eastland". XOC. 27 1/2" x 11 1/2" sight size. 200-300

619. Standing greenwing teal drake ca 1970 by Davison Hawthorne of Salisbury, Maryland, on a natural wood base. In XOC in all respects. One of his finest pieces. The bottom of the base is signed "Davison Hawthorne". 900-1200

620. Rare common gallinule in XOC with glass eyes by Holger Smith of Mattapoissett, MA. Signed on the bottom and hot branded "Holger G. Smith Decoys, 22 Fairhaven Rd, Mattapoissett, MASS. 1981". 300-500

621. Yellowlegs by Holger Smith in XOC. Hot branded "Holger G. Smith Decoys" on the bottom of the base. 350-550

622. Ruddy duck drake carved and painted in the Crowell style by "Nickerson". In XOC in all respects. Signed illegibly on the bottom. Looks like a neck check has been repaired. 300-500

623. Miniature split tail running ruddy turnstone in XOC. By James Lapham. "J. Lapham, Dennisport, Mass" and "Ruddy Turnstone" in ink on the bottom of the base. 700-900

624. Turned head miniature greater yellowlegs by Peter Peltz, Sandwich, MA. in XOC. "Peter Peltz, Greater Yellowlegs" in ink on the bottom of the base. 250-450

625. Near life size red eyed vireo with carved crossed wings and a turned head. In XOC except for a sliver of wood from along the left edge of the tail. "Peltz, Red Eyed Vireo" on the bottom of the base in ink. 250-450

623-624-625





626

626. Turned head life sized belted kingfisher by Peter Peltz "The Bird Barn", Sandwich, MA in XOP with a few crackles on the back. Carved raised wings and tail feathers. Signed on the bottom of the driftwood base "Belted Kingfisher, (F), Peter Peltz". 500-750

627. Miniature feeding canvasback drake by A. E. Crowell, East Harwich, MA. In XOC. In outstanding original paint as they have been kept in a dry environment. Impressed rectangular brand on the bottom of the base. A Boston family that moved to Arizona in the 40's consigned this Crowell miniature and the next three. 2400-3400

628. Miniature Canada Goose by A. E. Crowell, East Harwich, MA. In XOC, Exceptional paint. Impressed rectangular brand on the bottom of the base. 2500-3500

629. Miniature blue winged teal drake by A. E. Crowell, East Harwich, MA. In XOC with exceptional paint. Impressed rectangular brand on the bottom of the base. 2200-2600



627-628

630. Miniature hooded merganser drake by A. E. Crowell, East Harwich, MA. In XOC with exceptional painting. Impressed rectangular brand on the bottom of the base. 2500-3500

631. Racy pair of running Crowell mergansers in excellent original condition in all respects. Virtually mint. Rectangular brand on the bottoms of the mounts. Mr. Howes purchased many of his miniatures and decoys directly from Harold Gibbs, Elmer Crowell, James Lapham, and others. Those that went into his collection were sealed behind a glass case which account for the mint condition. 3500-5500
Provenance: Howes collection.

632. Miniature red-breasted merganser drake ca mid to early 1900's by Doughty from Orr's Island, Maine. Virtually mint. About 2 inches in length. 400-600

633. Miniature split tail yellowlegs by A. E. Crowell, East Harwich, MA. Professional restoration to the tip of the bill. In XOC otherwise. "Yellowleg" in ink and the impressed rectangular brand on the bottom of the base. 2500-4500

629-630



633



631PR-632





634



635

634. Half model miniature flying redhead drake carved and mounted by Elmer Crowell on a Crowell painted background. (12 ¼" x 8 ½") by A. E. Crowell. Beautifully set into an oval walnut frame. 4500-5500

635. Half model miniature of a mallard drake by Elmer Crowell. Beautifully mounted on a background painted by A. E. Crowell. Nicely framed. 4500-5500



636PR

636. Matched pair of magnificent full-bodied flying hen and drake black ducks by Arnold Melbye, Yarmouthport, MA. These are masterpieces by one of America's and Cape Cod's finest bird carvers. Melbye is mentioned numerous times in "Masters of American Bird Carving" by Anne Small where photos of several of his bird carvings can be found. Both are in excellent original condition in all respects. Signed on the back of the wings. "A. Melbye, 1960" Especially beautiful wing feather carving and painting. Mr. Melbye was considered the "Dean" of American bird carvers in his day. His pieces were limited and rarely available. 8000-12,000

637. One of a kind Bellamy type eagle by Arnold Melbye, Yarmouthport, Massachusetts. Signed on the reverse and dated 1952. 2500-3500

637



THE FOLLOWING FIVE LOTS ARE BY “HIE” HORACE CRANDALL. ALL ARE IN EXCELLENT, VIRTUALLY MINT ORIGINAL CONDITION. “Hie” Crandall. (1892-1969). Crandall is a noted decoy and miniature maker from northern California. Born in Ashaway, RI, he grew up waterfowling on the east coast. His father gunned for the market. Hie moved to Northern California in 1917. See 362-368 in *Wildfowl Decoys of the Pacific Coast* by Miller and Hanson for in depth information regarding this talented carver.



638



641PR



642PR

639PR-640

638. Exquisite miniature Canada goose decoy paperweight by Hie Crandell. Signed on the bottom. 800-1200

639. FINE miniature pair of pintails on driftwood by Horace “Hie” Crandall. Signed on the base. 2000-2500

640. Miniature mallard drake on a driftwood base by Hie Crandall. Signed on the base. 900-1100



641. Miniature pair of harlequin ducks on a driftwood base by Hie Crandall. Signed on the base. 1800-2200

642. Miniature pair of quail on a driftwood base by Hie Crandall. Signed on the base. 1800-2200

John Byron Garton was born in Manitoba in 1924 and is a two time winner of the world title “World Champion Carver, Ward Foundation Museum of Wildlife Art”. In 1996 he was nominated as Canadian artist of the year. The following are three exceptional pieces by this award winning artist.

643. Miniature wood duck drake decoy with carved wing and tail detail by J. B. Garton. Rectangular impressed brand reads “J. B. Garton, Smiths Falls Ontario” Stamped “Made In Canada” and “Wood Duck” in ink. In XOC with a minor rub to the edge of the tail. 600-900

644. Miniature widgeon drake decoy with carved wing and tail detail by J. B. Garton. Rectangular impressed brand reads “J. B. Garton, Smiths Falls Ontario” Stamped “Made In Canada” and “Widgeon” in ink. In XOC. 600-900

645. Miniature pintail drake decoy with carved wing and tail detail by J. B. Garton. Rectangular impressed brand reads “J. B. Garton, Smiths Falls Ontario” Stamped “Made In Canada” and “Pintail” In XOC. 600-900

643-644

645





646-647



648-649-650

646. Extremely rare ¼ size turned-head goldeneye drake decoy of high quality from the Quebec province, Canada. In XOC. Very detailed carving and painting with mellow patina, glass eyes, and rasping on the head and breast. Similar to the quality of Paquettes decoys and carvings. 1200-1800

647. Extremely rare quarter size turned-head bluebill drake decoy from the Quebec province, Canada in XOC. Very detailed carving and painting with mellow patina, glass eyes, and rasping on the head and breast. Of high quality, and good age. Possibly by Paquette. Made by someone of that skill level. 1200-1800

648. Miniature turned-head blue winged teal by Jess Blackstone, Concord, NH. In XOC with a professional wing tip restoration by Steven Weaver. Signed "JB", "Blue Winged Teal" and "#38" on the bottom of the base. 800-1200

649. Miniature red breasted nuthatch by Jess Blackstone, Concord, NH. In XOC. Signed "JB", "Nuthatch" and "#178" on the bottom of the base. 700-900

650. Rare miniature tree sparrow by Jess Blackstone, Concord, NH. In XOC. Signed "JB", "Tree Sparrow " and "#8" on the bottom of the base. The very low number indicates that this is a very early piece. 1200-1600

651. Miniature pair of shovelers on a rectangular base painted green by Harold Gibbs, West Barrington, RI. In XOC. Signed "HNG" in pencil on the bottom of the base. This very early pair is made in the manner of A. J. King who was a neighbor of Gibbs. These mounts rectangular mounts were used early in his carving career. 700-900

652. Standing miniature black duck with raised wings by Harold Gibbs, Barrington, RI in XOC. Signed "HNG" and identified "BLACKDUCK" in pencil on the bottom of the base. Recently found in a RI estate. 600-900

653. Very rare and early miniature hudsonian godwit decoy by Harold Gibbs, Barrington, RI. In XOC. Mounted on a single tiny dowel placed into a rectangular painted base. 600-900

651-652-653





654. Tiny (4 inches long) redhead drake decoy paperweight by Frank Adams. Crisp paper label on the bottom reads "Frank Adams, Builder of Marine Weather Vanes, West Tisbury, Mass". In XOC except for a flake at the tip of the bill and one at the top of the head. This is an exceptional example. 500-700

655. Miniature cock pheasant on a small branch base. In XOC except for kitten chews at the end of the tail. "The Downeast Whittler" ink stamp on the bottom and "C. Earl Watson, 490 Chatham St., Lynn, Mass" an owners ink stamp on the bottom of the base. 150-250

656. Miniature feeding mallard hen with carved wing and tail feather detail on a driftwood base by Russ Burr. In XOC with "Russ P. Burr, Hingham, MA" ink stamp on the bottom of the base. 500-750

657. Wonderful carving of a split tail wing up preening yellowlegs by James Lapham. In XOC with great paint and a tiny carved feather in the bill. Signed "J. Lapham, Dennisport, Mass, Yellowlegs" on the bottom of the base. 600-900

658. Horned lark on a driftwood base by James Lapham, Dennisport, MA. Signed "J. Lapham, Dennisport, Mass, Horned Lark" on the bottom. In XOC. 600-900
Provenance: Howes collection

659. Near life size short billed marsh wren on a branch base by James Lapham. Signed, "J. Lapham, Dennisport, Mass, Short billed marsh Wren" on the bottom. In XOC. 600-900
Provenance: Howes collection

661B-661C



657

658-659-660



660. Miniature white throat sparrow by Jess Blackstone, Concord, NH in XOC. Signed "JB" and "White Throat Sparrow, #99" on the bottom of the base. 800-1200
Provenance: Howes collection

660A. Lot of five mini salesman's sample decoys Pair of wood ducks and a pair of pintails along with an animal trap mallard XOC few rubs on AT. Photo on web site only. 100-200
Provenance: Pitt collection

661. Lot of two items. A Bufflehead decoy with stained and sealed finish. XOC and a small unpainted decoy made of Myrtlewood. In XOC. Photo on web site only. 50-75

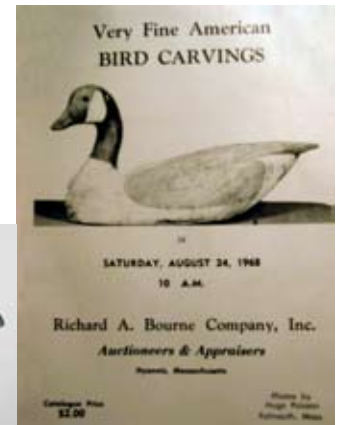
661A. Lot of three items. An Indian stick decoy in XOC, a cornhusk decoy in XOC, and a decorative oystercatcher by Richard Morgan. XOP with a few chips to the surface. On the bill and the breast. Photo on website only. 100-150

661B. Feeding split tail golden plover with glass eyes by "Cigar" Daisey. "CIGAR" branded into the bottom along with Delbert "Cigar" Daisey in ink on the bottom of the bird. Original base has a name and address tag along with "Delbert "Cigar" Daisey, Golden Plover" in ink. 400-600

661C. Miniature (11 in long, 7 in tall) folk art pheasant carving mounted on a birch base in XOP. Tiny rub at the end of the tail. Carver unknown. 100-150



662



661D. Lot of two black duck decoy heads with tack eyes from MA. One in OP and the other in old repaint with rusty nails. Photo on web site only.

50-100

662. Wonderful early turned head, solid body working Canada goose decoy by the Ward brothers, Crisfield, MD. Paint appears to be worn OP and possibly some in use overpaint to the white on the lower sides and cheek strap. Struck by a few shot, three tight neck checks, check on the bottom that extends into the breast and under the tail. See cover photo of Richard A. Bourne catalog for August 24, 1968 for cover photo of this decoy. Sold as Lot 58 with this description, "Fine Canada Goose by Lem Ward, Crisfield, Maryland, one of the desirable types made by this craftsman, this bird has a turned head. Fine original paint". Selling price at the time. \$150. It has remained in the same collection since the 1968 purchase.

10,000-15,000

663. Fabulous preening bluebill drake decoy, a masterpiece by the revered Ward Brothers, of Crisfield, MD. Beautifully carved wing and tail feather detail and a depressed wing groove runs between the wings from behind the neck towards the end of the wings. The head and neck are pulled up and back and to the left, in a breast preening pose. The breast is dimple carved. A metal tag under the tail is engraved "L. T. Ward, Wildfowl Counterfeiters since 1918". Written in ink on the bottom by the Ward Brothers is "Greater Scaup, Blue Bill, Broad Bill, Black Head, Flock Duck, L. T. Ward, Crisfield, MD" and "SFE". There are a few areas of crazing under the tail and near the wings. In excellent original condition. (XOC)

9000-12,000



663





664PR

664. Wonderful pair of turned-head bluebills by the Ward Brothers in XOC. Drake and the hen are virtually mint except for a few lines of crazing on the back and under the tail. Written in ink on the bottom of both is "Made by Steve, Painted by Lem, Ward Bros. 1967". 9000-12,000

665. Pair of bold turned head canvasbacks by the Ward Brothers. Both hen and drake are in XOC. The hen has a thin age check about 2 inches in length on the left cheek. Both are dated "1969" and signed "L. T. Ward Bro, Crisfield, MD, Lem Ward". 9000-12,000

666. Pair of Ward Brothers bluebills. In XOC in all respects. Signed and dated on the bottom of both decoys. The writing reads, "Made by Steve and painted by Lem, Ward Bros. 1967". Heads sharply turned 45 to the left. There are a few areas of age crazing in the paint on the hen. 9000-12,000
Provenance: Pitt Collection

666A. Turned head balsa black duck decoy with a pine head and inlet tail by the Ward Brothers, Crisfield, MD. OP with a fair amount of wear to the surface. Seams and filler visible in the balsa and the filler along the tail is cracked. Struck by a few shot. Wood a bit soft and spongy on the bottom. 800-1200



665PR



666PR



666A

667





668PR



669PR



670(3)



668A



671(2)

668. Pair of Cans in XOC in all respects. Heads are pretty much straight forward. Very nicely painted. On the bottom of both decoys it reads, "Painted by Lem Ward". 1200-1800

668A. Turned head 1945 Ward Brothers style Canada goose decoy by Oliver "Toots" Lawson in XOC with a balsa body and a pine head and inlet tail. Light wear overall with heavier on lower sides of the breast and a few surface dents in balsa. Filler over the head dowel is cracked and some missing. Copy of Steve Ward obituary attached to the bottom. X Provenance: Bosworth Collection 2200-2600

669. Pair of turned head pinch-breasted pintail decoys made in the Ward Brothers 1935 style by Gene Sullivan. In XOC with intentional surface crackling, wear and a few shot marks. Glass eyes. 1200-1600

670. Three sets of folding triangle sets of decoys in good condition with OP. One set of bluebill drakes, one set of bluebill hens and a set of redhead drakes. One set pictured. 250-450

671. Lot of two ruddy duck decoys in XOC branded JRH (John Hamilton) on the bottoms. One is a sleeper. 300-500

672. Green-wing teal decoy with glass eyes in the Elmer Crowell style by Brian Mitchell of North Carolina. In XOC in all respects. Mr. Mitchell lived in Kingston, MA. as a young man and his carving style was influenced by the old Massachusetts master carvers. 200-300

673. Red-breasted merganser decoy by Brian Mitchell. In XOC in all respects. Glass eyes, carved wooden comb. 200-300

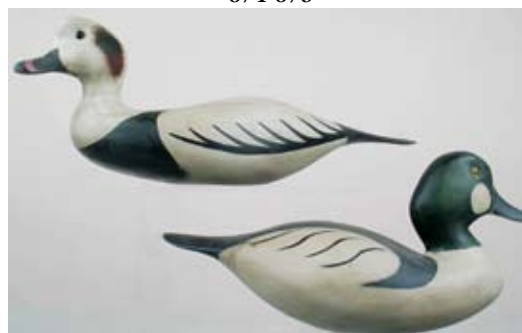
674. Oldsquaw decoy with a paddle tail and glass eyes by Brian Mitchell. In XOC. 200-300

675. American Goldeneye decoy by Brian Mitchell. In XOC in all respects. Nice early "Nickerson" style decoy fitted with glass eyes. 200-300

672-673



674-675



676



676. FRESH to the decoy world is this rare and important pintail drake by Ira Hudson of Chincoteague, VA. Circa early 1900's. In untouched original condition, a nearly flawless gem. There is the usual minor rub or two and one tight line check in the lower neck along with a tight line check in the bill near where it joins the head. Great mellow patina. Detailed bill carving. The tack eyes are set into a carved eye groove in the head. This is an unused, never weighted, classic, carved in Ira Hudson's very best style. This is the finest example by this maker that we have ever seen. This decoy sat on the mantle of the consignors father's home in Chicago for 65 years or so. 35,000-45,000

677. RARE Pintail drake decoy by John Blair, Philadelphia, PA. ca late 1800's. Tack eyes and nice mellow old paint. The paint is for the most part original with some in use touch up. Professionally cleaned. Early thin body style. Approximately 2 1/2 inches thick. Square patch in mid back from top to bottom. Minor flaking and wear on the mid back and along the tail edges. "J. Boyd" branded into the bottom. Very early and desirable piece by this revered maker.

8000-12,000



677

677A. Hollow mallard drake decoy with glass eyes and carved raised wing tip detail from the Delaware River carved in the style of John Blair. In good OP with some wear on the back of the neck, breast, and under the tail. Slight discoloration from stringing lines wrapped around the body. A pleasing contented form. 800-1200.

677B. Hollow pintail drake decoy with split wings and tail. No eyes. In XOC with a few surface rubs. Appears to be a Delaware River decoy. Maker unknown. 400-600

678. Solid body brant decoy by Nathan Cobb from Cobb Island VA. Typical carved reverse "N" on the bottom just below the weight. Open check in the bottom. Very old paint with heavy wear and overall age checks and cracks. Great bold form with a split tail. Bill is made separately and splined to the head. Neck seat has been planed flat, and head and neck re-seated many years ago. Acquired by the former owner from Robin Starr, son of decoy book author Dr. George Ross Starr. 2500-4500



677A

678

677B





679



681PR



680PR

682



683

679. Hollow pintail drake decoy with tack eyes by Bob White. In XOC with intentional aging on the surface. Square of lead on the bottom and an oval brand that reads "Hand Carved by Bob White, Tullytown, NJ" also signed "Bob White, 1981" in ink. 800-1200

680. Great hollow pair of green winged teal decoys in XOC by John McLoughlin, Bordentown, NJ. Both have carved raised crossed wing detail and tucked sleepy heads. Drake has the keel removed and the hen did not have a keel. Bottom of the drake is signed "John W. McLoughlin" in ink and "bought from John at PSWA Picnic in San Diego, June, 1985" in pencil. Hen is signed "John W. McLoughlin" in ink and "Bought from John and Anna at Picnic in San Diego" June, 1985" in pencil. 1800-2600

681. Pair of hollow canvasback decoys by Ralph Sabatini, NJ in XOC. Signed on the bottom near the weight along with "#1231" and "SA" in ink. 200-400

682. Rare early two-piece pegged body hooded merganser drake decoy from NJ in appealing old working paint. Light overall wear to the surface, carved eyes and small size. Seam in the body is slightly open and the neck joint is also open due to wood shrinkage. 350-550

683. Solid body swimming brant from NJ with glass eyes in XOC. Never rigged. Maker unknown. 300-450

684. Wonderful tack eyed breast-preening stick-up brant decoy by John Ramsey (1858-1934) from Summerside, PEI, Canada in XOC with light wear. Artistically carved from a single piece of wood. The center of the body is umber stained wood with grayish white painted feathers. The breast, head and tail are painted and the breast feathered similarly. Mounted on a single metal rod. Neck has a tight age check, body has a few small knots that do not detract. See "Decoys of Maritime Canada" by Guyette, page 115 for photo of similar decoy. This decoy has been in an important folk art collection for the last 30 to 40 years. 5500-7500



684





685



686PR



687

685. Wonderful tack eyed stick-up brant decoy by John Ramsey (1858-1934) from Summerside, PEI Canada in XOC with light wear. Head and neck are artistically carved from a single piece of wood. The center of the body is umber stained wood with grayish white painted feathers. The breast, head and tail are painted and the breast is feathered similarly. Mounted on double metal rods. There are a few narrow age checks in the head and lower neck and a grain line check with original filler along the right side from the breast to the tail. See "Decoys of Maritime Canada" by Guyette, page 115 for photos of decoys by this maker. From the same collection as the above example. 900-1200

686. Unusual pair of raised-wing eider decoys with painted eyes. Wings possibly made with carved shingles. Maker is Roosevelt Penny, Cape Sable Island, Nova Scotia. In worn OP. The wings are added to the back of the decoy and tacked in place with the tips raised and crossed. Neck filler on both is cracked and the drake has the tail missing. Weights have been removed. See "Decoys of Maritime Canada" by Guyette, P. 34 for a photo. 600-900

687. Brant decoy from New Brunswick, Canada with two drilled mounting holes in the bottom of the body. Hollowed from the bottom with a lead weight. Bottom reads "Mr. Myles Wishart - New Brunswick, Wishart Point, '95 Market Gunner". 300-500



692



689



690

688. Metal factory decoy body mold. Photo on web site only. 50-75

689. Paddle tail hump back sleeping eider drake decoy ca early 1900's from Maine or Nova Scotia. In very old working paint with carved eyes. Great form, few age checks in the body. 700-900

690. Turned head turtle-back eider drake decoy from Nova Scotia in great old paint and patina. There are numerous very narrow grain line checks in the body and the neck. 750-1250

691. Solid body paddle tail eider drake decoy with painted tack eyes from Nova Scotia in good working paint by an unknown maker. From the Doug Knight Collection. 800-1200

692. Eider drake from the Deer Island area. Nicely done, but it does not appear to be very old. Recently found in the Blue Hill area. 250-450

693. Solid body bluebill hen with turned head and carved wing feathers. Rasping on the back of the head. XOC with wear along the grain lines in the body. "Made by Jimmy Tomney, Veroun, Quebec" in ink on the bottom. 500-1000

691

693





694PR

696



697



698



695

694. Pair of magnum oversize bluebill decoys by Reg Bloom from Kingston, Ontario, Canada. In XOC. Never rigged. Nicely impressed feather detail on the lower sides and back. Glass eyes. The drake has two narrow neck checks that have been glued. 600-900

695. Turned head bluebill hen decoy with "D. W. Nichol, Smith's Falls, Ont. Fem Bluebill, (Scaup)" on the bottom in paint. In XOC. Carved wing and tail detail, great comb paint on the back and glass eyes. Tiny paint chip to the tip on one wing. 750-1250

696. Rare early tack eye humpback solid body goldeneye drake decoy by the Stevens Factory, Weedsport, NY. Very old paint some OP with wear to the wood on the end and side of the bill and tail. Two or three age checks on the body. Small circular inlet weight under the tail. "ALF" Brand on the bottom. 800-1200

697. Classy St. Clair flats black duck with nice comb painting on the head and feather combing on the body. Tack eyes, head renailed. Appears to be OP, wear to surface on top of head and left edge of the bill and sides of the body. "SD" in paint on the bottom. Sliver of wood nailed in place on the left side and sliver missing lower left side. 500-750

698. Red-breasted merganser drake with an inlet head, carved crest and painted eyes. In OP with a few grain line checks and some light wear to the tail and bill edges. 400-600

699. Eider drake decoy with glass eyes, and a carved mussel in the bill. Inlet head and neck. Attributed to Reggie Birch, Chincoteague. VA. Sheet lead weight on the bottom. In XOC in all respects. 600-900

700. Petite solid body St. Clair Flats bluebill hen decoy in nice old working paint with glass eyes. Chips of wood missing from the tail. Struck by shot with a few slivers of wood from the bill. 150-250

701. Oversize hollow working black duck decoy with glass eyes hot branded "Hy Dahlka" on the left side of the body. Good OP with light wear and a sliver chip from the underside of the bill. Few narrow checks along the grain lines in the body. 400-600

699



700



701





702



703

702. Solid-bodied immature white-wing scoter by Sven Olsen (1910-1975) of Northeast Harbor, ME. In XOC with "SVO" brand on the bottom for Sven Viktor Olsen. Nicely carved wing outlines, inlet head and neck, and red glass eyes. Carved wings done in the style of Augustus Aaron Wilson of South Portland, ME. Olsen may have only made one small rig of scoter decoys. 1200-1800

703. Oversized white wing scoter decoy ca early 1900's with carved wings in XOC. Average in use wear with an open check on the bottom from the breast to the tail, and a thin age check on the right side of the body. Wear on the top of the head and the left side of the bill. Very much in the style of Gus Wilson. Great form. 900-1200

704. Solid body red-breasted merganser decoy by Fred Dobbins, Jonesport, ME. In XOC, nice patina, carved eyes and turned head. Scratch signed on the bottom "F. J. Dobbins, Jonesport, Maine". 200-300



704



705



706

705. Shadow Canada goose decoy in good old original paint by George Boyd, Seabrook, NH. Great form, approx 3/4 inch thick. One side has an area of wood softened by moisture. From a set of two. 450-600

706. Canvasback drake decoy ca 1900 with painted eyes and good old working paint with some OP on the head and back. Struck by shot on the head and breast. Sliver of wood missing from the center of the bottom where the weight was removed. Head loose, age check in the neck, wear to the edge of the bill and tail. 300-500

707. Chesapeake Bay redhead drake with great early design in OP with wear to the wood in places. Old tight neck check. Possibly by Ben Dye or the Holly Family. 400-600

708. Pintail drake ca 1930's attributed to John Glen from Rock Hall, MD. Old tag on bottom reads, "Pintail, carver unknown". Wear to wood above tail. Lighter wear on the sides. Couple of old knots showing. 800-1200

709. Black duck by Madison Mitchell. In XOC in all respects. Signed in electric pencil on the bottom "R. Madison Mitchell, Havre de Grace, MD" Paint over the signature is rubbed to show the name. 400-600

707



708



709



710



711

712



714



713



716



710. Solid body canvasback drake decoy by Frank Schmidt, Centerline and Detroit, MI. Original keel and mostly good OP. With t/u to the black near the tail. Average in use wear to the surface. 250-350

711. Canvas over metal wire frame Canada goose decoy from NC. In OP with light wear to the canvas and wear and flaking to the head on both sides. Thin check in the head. Made without eyes. 300-500

712. Canvas over a metal wire frame canvasback drake decoy from NC. In XOC with light wear. Head and bottom board are carved wood. Made without eyes. 250-350

713. Wildfowler brant decoy made of pine with the original keel. In XOC with light surface wear. "F. W. Vollmer" carved into the bottom alongside the keel. 300-450

714. Factory mallard drake decoy by Gundelfinger with glass eyes. Other than some cracked and missing neck filler, this a very clean decoy in excellent original condition. A little wear to the top of the head and the bill. 200-300

715. Lot of two decoys. A factory mallard hen decoy in OP with a check in the body from the breast to the mid back with the paint flaking along the check. Heavy wear to the wood on the breast and along the sides and a Mason Factory Detroit Grade canvasback drake decoy in OP with heavy wear and flaking on the breast and over the original filler on the back. Two checks in the head. Chip in the edge of the tail. Photo on web site only. 200-300

716. Long Island "corkie". A full-bodied mallard drake decoy in excellent original paint. Clean bill break with dings on the surface and a few small pieces of cork missing. Appears to be nearly unused. 300-500

717. Lot of six cork body gunning black ducks by Al McCormick, Long Islands famous decoy maker. In good

OP with light in use wear. Pine heads and bottom boards with rigging. Three low heads, one high head, and two regular height heads. Only one shown. 300-500

717(6)



718

718. Flocked surface hollow black duck decoy by Harry V. Shourds in very good OP with rectangular inlet weight.

Few minor chips on the surface, thin neck check and a mud wasp nest on the bottom. 500-750

718A



721



719

720



722

718A. Two-piece laminated body plump bufflehead drake decoy ca early 1900's from New Jersey. Painted eyes and it appears to be in original paint. Original weight still attached. X a famous Duxbury collection. 600-900

723. Turned head swimming blue winged teal hen decoy from Louisiana with glass eyes and nicely carved wing outlines. Mostly OP with surface crazing and a fair amount of flaking. Struck by shot. Bottom is stamped four times and is illegible. Made of local materials such as Tupelo or Cypress root. 500-750

719. Louisiana mallard drake decoy with glass eyes and nicely carved crossed wing tips. Paint appears mostly original with wear and rubs to the surface and a few shot holes. Weight has been removed. Possibly LaFrance or Joffraeu. 1500-2500

724. Mallard hen decoy with unusual heart shaped wing carving and glass eyes from Louisiana in gunning paint. Weight removed. Probably made of tupelo. 500-750

720. Turned head mallard drake decoy with the typical saw tooth wing edges by Xavier Bourg of LaRose, LA. In old mostly OP with wear and a neck check with possible touch up in that area. Probably made of cypress. 800-1200

725. Mallard drake decoy with identical wing carving as previous lot. Glass eyes, upturned bill with weight removed, struck by a few shot. Most of paint missing in the middle right area of the body. Remainder of paint appears to be OP. 500-750

721. Preening widgeon drake decoy by the noted Louisiana carver Roy LeGaux Sr., St. Bernard Parish. Raised wings, carved feathers and glass eyes. Wonderful mellow color. Made of a light weight wood, possibly Tupelo. Signed "Roy LeGaux, St Bernard Parish, LA. 2002". 400-600

726. Rare "Cox Diver" pintail drake tip up decoy by the Cox Company, Antioch, CA. XOP, heavy weight on the front bottom. 250-450

727. Pintail drake by Dr. James Hagen, Louisiana. In excellent condition in all respects. 300-500

722. Preening widgeon hen decoy by the noted Louisiana carver Roy LeGaux Sr., St. Bernard Parish. Raised wings, carved feathers and glass eyes. Wonderful mellow color. Signed "Roy LeGaux, St Bernard Parish, LA. 2002". 400-600

728. Ring bill drake decoy with painted eyes by Alvin LaRose in good old working paint with wear. Solid body with a crease carved at the upturned tail. Signed on the bottom "Alvin LaRose, Lockport, Louisiana". 300-500



723

724

725



726



727



728

729



729. Rare life-size Baltimore oriole with split tail carving, glass eyes and exceptional paint detail by A. E. Crowell, East Harwich, MA. Signed "A. E. Crowell" in paint on the back of the base and an impressed rectangular brand on the bottom of the base along with "Baltimore Oriole, Male" in pencil. In XOC with minor crazing to the black paint on the head. 9000-12,000

730. Rare life-size drop wing goldfinch with glass eyes by A. E. Crowell, East Harwich, MA. In XOC. Impressed rectangular brand and "Goldfinch, Male" in pencil on the bottom of the base. Exceptional paint. 5500-7500

731. Rare and unusual 1/4 size cock pheasant on a chip carved stained base by A. E. Crowell, East Harwich, MA. In XOC. Small tack eyes with very mellow deep colored paint. "A. E. Crowell, Cape Cod" in ink, with the impressed rectangular brand and #49 in pencil on the bottom of the base. Original pattern for this exact carving is in the Heritage Plantation Collections. 4500-5500

732. Miniature reaching mallard hen with a full crop which is rarely seen outside of the mallard hens on Crowell's double mounts. Maker A. E. Crowell, East Harwich, MA. In XOC. Split wings and very nice paint detail. Impressed rectangular brand and "Female Mallard" in pencil on the bottom of the base. 2500-3500

730



733. Miniature split tail wood duck drake by A. E. Crowell, East Harwich, MA. Early circular ink stamp on the bottom of the base. Outstanding original paint except for the professional restoration to the bill tip by Steven Weaver. 2500-3500

734. Miniature split tail semi-palmated plover by A. E. Crowell, East Harwich, MA. In XOC. Impressed rectangular brand and "Semipalmater, 22" on the bottom in ink. 2800-3200

735. RARE EARLY miniature running split tail red-breasted merganser drake by A. E. Crowell, East Harwich, MA. In XOC. "#75" and "Crowell" in ink on the bottom of the base. One of his very best. 3000-4500

736. Miniature feeding brant by A. E. Crowell, East Harwich, MA. Impressed rectangular brand on the bottom of the base. In excellent original condition except for a minor professional restoration to the tip of the bill by Steven Weaver. 2500-3500

733-734



731-732



735-736





737-738-739

737. Miniature American merganser drake by A. E. Crowell, East Harwich, MA. In virtually pristine condition. Kept under glass. Double impressed rectangular brand on the bottom of the base. 2500-3500

738. Early petite miniature pintail drake by A. E. Crowell, East Harwich, MA. In XOC with a faded circular ink brand and "Pintail Drake" in pencil on the bottom of the base. Tiny ding on the left tip of the bill. 2500-3500

739. Petite miniature green winged teal hen by A. E. Crowell, East Harwich, MA in XOC. Blue paper label with "F. Green Teal" in ink on the bottom of the base. Neck seam tightened, cleaned, and re-glued. 2500-3500

740. Exceptional miniature split tail mallard drake by A. E. Crowell, East Harwich, MA in XOC. "A. E. Crowell, Cape Cod, 1942" in ink along with an impressed rectangular brand on the bottom of the base. 2200-2800

Provenance: Howes collection

741. Rare miniature herring gull on a carved wooden clam shell base by A. E. Crowell, East Harwich, MA. In XOC. #8 in ink and the impressed rectangular brand on the bottom of the base. 2500-3500

742. Miniature canvasback drake feeder with a split tail by A. E. Crowell, East Harwich, MA in XOC. "Canvasback" in pencil on the bottom of the base. Bill may have been restored. 2400-2800



740-741

743. Miniature canvasback hen with nice "peaky" head style and a split tail by A. E. Crowell, East Harwich, MA. In XOC. Blue paper label with "F. Canvasback" in ink on the bottom of the base. 2400-3000

744. Miniature split tail mallard drake with a blue paper label on the bottom of an early driftwood base by A. E. Crowell, East Harwich, MA in XOC. 2400-2800

744A. Miniature decoy type mallard drake by A. E. Crowell, East Harwich, MA in XOC. Attached to a wooden box cover. Remainder of the box is missing. 800-1200

745. Unusual porcelain downy woodpecker painted by Crowell and signed inside the bottom "A. E. Crowell". In excellent condition with a few flakes of paint missing. 200-300



742-743-744



744A-745



746-747



748-749-750

746. Exceptional miniature goldfinch by A. E. Crowell, East Harwich, MA. In XOC. Rare animated feeding position. Wonderful mellow paint. Impressed rectangular brand on the bottom of the base. 1800-2200

747. Miniature red wing black bird by A. E. Crowell East Harwich. In XOC with wonderful form and paint. Impressed rectangular brand on the bottom. 1800-2200

748. Wonderful early miniature blue jay by A. E. Crowell, East Harwich, MA. In XOC. The circular ink stamp, though faded, is visible on the bottom of the base. 1800-2200

749. Miniature Nashville warbler by A. E. Crowell, East Harwich, MA. In XOC. On the bottom reads, "Nashville Warbler" in ink, accompanied by an impressed rectangular brand on the bottom of the base. 1800-2200

750. Tiny miniature chickadee by A. E. Crowell, East Harwich, MA in XOC. The circular ink stamp on the bottom of the base. 1800-2200

750A. Early lifesize walking winter yellowlegs with a split tail and glass eyes on a carved "rock" base by A. E. Crowell, East Harwich, MA. In excellent original untouched dry paint. An early blue paper label on the bottom of the base has "Winter Yellowlegs" written in ink across the center. One of Elmer's finest pieces. 25,000-30,000

750B. Delicate lifesize piping plover with a split tail and glass eyes on a chip carved "rock" base by A. E. Crowell, of East Harwich, MA. In excellent original condition. Minor replacement of putty for a toe and small area on the thigh. Impressed rectangular brand on the bottom of the base. Outstanding paint and form. 9500-12,500



750A



750B



750C-750D

750D (close-up)

750C. Very early running yellowlegs decoy ca 1900 with a split tail and tack eyes by A. E. Crowell, East Harwich, MA. In excellent original condition. Paint is mellow with light wear and a few shot holes. There is a knot near the stick hole and a small amount of wood showing around the tack eyes. Bill appears to be original.

25,000-32,000



750D. Rare early delicate split-tail sanderling decoy with glass eyes by A. E. Crowell, East Harwich, MA. In XOC. Very light wear with a few shot holes. One of the rarest of all his shorebird decoys.

35,000-45,000

Provenance: McCleery collection.

750E. PLUMP black-bellied plover decoy by Anthony Elmer Crowell of East Harwich, MA, ca 1915-1918. In excellent original dry condition in all respects. One of his nicest decoy designs made in an innovative tucked-head resting position.

15,000-22,000

750E





751PR



751A



751B PR



751C PR



751D-751E

751. Wonderfully detailed miniature pair of woodcock by A. J. King, Scituate, RI. In XOC. Male is standing with carved dropped wings and the female is sitting. Signed on the base in ink. 3000-4500

751A. Grouse on a driftwood mount by A. J. King. Signature worn off but guaranteed to be by King. Exquisite carving in excellent original condition. 1500-2500

751B. Pair of hawks by A. J. King of North Scituate, RI. In great paint with professional restoration to a couple of wing tips and a bill by Steve Weaver. 2500-3500

751C. Pair of miniature wood ducks by George Boyd of Seabrook, NH. Typically crazed original surface has been professionally cleaned and sealed. Structurally sound. 4000-6000

751D. Miniature mallard drake by George Boyd of Seabrook, NH. In XOC with typical crazing that has been professionally cleaned and sealed by Steven Weaver. "Mallard Drake" in faded pencil on the bottom. 2000-3000

751E. Miniature black duck by George Boyd, Seabrook, NH. In XOC with a few tiny imperfections that were darkened by Steven Weaver. Black Duck written in faded pencil on the bottom. 2000-4000

752. Crowell miniature tern in excellent original condition mounted on a rectangular piece of driftwood. The Crowell circular ink stamp is on the bottom along with the Donald B. Howes collection stamp and the word "Tern". 1800-2400

753. Pair of quail with turned heads, glass eyes and open beaks by Gustave Jansson. Nicely carved wing outlines. In XOC except for a check on one edge of the beak on the female. Both have a rectangular hot brand on the bottom of the base with R. G. Jansson, Cape Cod inside. 800-1200



752

753PR





754-755-756



757-758-759



760-761-762

754. **RARE miniature killdeer by Jess Blackstone of Concord, NH.** In XOC. The bottom reads, “#24”, “Killdeer” with the typical “JB” signature in ink. 1200-1600
Provenance: Robert Olsen collection

755. **Miniature ruddy turnstone by Jess Blackstone, Concord, NH.** In XOC. “#23”, “Turnstone” and the typical “JB” signature in ink on the bottom of the base. 1400-1800
Provenance: Robert Olsen collection

756. **Miniature green wing teal decoy model by Jess Blackstone, Concord, NH.** In XOC. “#106”, “Green Wing Teal” and the typical “JB” signature is written in ink on the bottom of the base. 500-1000
Provenance: Robert Olsen collection

757. **Miniature cerulean warbler by Jess Blackstone, Concord, NH.** In XOC. “#30”, “Cerulean Warbler” and the typical “JB” signature in ink is on the bottom of the base. 1200-1600

758. **Miniature bluebird by Jess Blackstone, Concord, NH.** In XOC. “#145”, “Bluebird” and the typical “JB” signature is in ink on the bottom of the base. 1200-1400
Provenance: Robert Olsen collection

759. **Miniature blue jay by Jess Blackstone, Concord, NH.** In XOC. “#37”, “Blue Jay” and the typical “JB” and “Concord, NH” signature in ink on the bottom of the base. 1200-1400
Provenance: Robert Olsen collection

760. **Miniature myrtle warbler by Jess Blackstone, Concord, NH.** In XOC. “#151”, “Myrtle Warbler” and the typical “JB” and “Concord, NH” signature is in ink on the bottom of the base. 1200-1600

761. **Miniature robin by Jess Blackstone, Concord, NH.** In XOC. “#45”, “Robin” and the typical “JB” and “Concord, NH” signature is in ink on the bottom of the base. 1200-1600
Provenance: Robert Olsen collection

762. **Miniature bluebird by Jess Blackstone, Concord, NH.** In XOC. “#348”, “Bluebird” and the typical “JB” signature is in ink on the bottom of the base. 1200-1400



763-764



764A

763. White throat sparrow by Peltz in very good original condition. Signed "P. Peltz" and "White Throat" on the bottom of the base. Tiny rub on the left side of the tail.

250-350

764. Miniature black duck flyer by A. J. Dando. In XOC. Signed on the back of the wing "A. J. Dando, '33" ". Dando sold many of his items in NY city sporting art shops.

300-500

764A. Pair of rare lifesize quail with glass eyes and carved dropped wings mounted on a piece of driftwood by Gordon Clark from Yarmouthport, MA. In excellent original condition except for a small chip at the edge of the tail that has been glued in place on the hen. The hen is resting and the drake is reaching.

600-900

765B-765C



765



765A

765. Life sized yellowlegs on a driftwood base by Alfred Gardner, Accord, MA in XOC. Glass eyes, mounted on two wire legs.

200-300

765A. Lifesize flying black duck signed "Geo W. Reinbold" under the outstretched wing. One wing is missing, damage to the edges of the tail. OP feet are missing.

500-750

765B. Lesser yellowlegs on two wire legs and an unusual wooden "star" base. In good old paint. Foot putty cracked and some is missing. Bill re-glued in place.

200-400

765C. Split tail carved-wing running yellowlegs. In XOC with two wire legs on a driftwood base. Glass eyes. Carved rectangle on the bottom has a reversed "D", a "B" and "+ D.S." inside. Few beads of sap on the surface and flakes of paint from near the neck.

300-450

766. Miniature canvasback drake by Gustave Jansson, Cummaquid, MA. In XOC with a rectangular impressed brand on the bottom that reads "Gustave Jansson, Cape Cod" on the bottom.

250-450

766





767-768



769

767. **Tin tea Caddy** in old green paint with decorative borders and white porcelain knobs. Three numbered compartments. Marked TEA on the top. 18 inches long by 9 ½ inches wide by 6 ½ inches deep. In good original paint with average wear. 500-750

768. **Flying black duck**, about ¾ lifesize. Attributed to Ralph Laurie of Hingham, MA. Laurie, Russ Burr, Elisha Burr, Alfred Gardner, and Joe Lincoln were all neighbors and the major five bird carvers of the “Hingham School” of carvers. In fine original condition except for a neck repair. 300-500

769. **RARE large 19th century Nantucket work basket**. In excellent original condition with a couple of minor imperfections. One edge of the inner circular maple base is missing. Made of oak staves and cane weaver that has darkened with age. 10.5 inches tall to the rim and 17.5 inches in diameter. 9000-12,000



770-771

770. **Wonderful Nantucket wooden whirligig of a sailor boy** with a painted face and blue and white uniform by S. Pease. Minor chip to the hat and overall in use wear. Paddles are missing. In XOC. Approximately 14 inches tall. 900-1200

771. **Wonderful Nantucket wooden and metal whirligig of a sailor boy** with a painted face, a metal brimmed sailor hat, and a blue and white uniform. Typical grain line flaking of paint and some rust spots on the hat. In good original paint. 10 inches tall. 600-900

772. **2 scrimshawed whales teeth together with a sailor made basket that appears to crocheted with string and stiffened**. One old tooth and one new. 500-1000

773. **Dowitcher**, circa early 1900's. A Wind bird. Carved wing outline ending in a split at the tail. Rusted tack eyes with an old original bill. 400-800

774. **Flattie golden plover ca 1900 from LI with a hole in the body for stringing**. Nail bill. In fine original paint. Struck be a few shot. Three little holes have been drilled near the upper back, probably for mounting. 300-500



773



775. **Flattie yellowlegs, ca 1900 from New England**. In excellent original paint with an original wooden bill. 300-500

772



774-775





776

776. Yellowlegs ca early 1900's with a strong attribution to Frank Adams from Martha's Vineyard. 1200-1800

776A. 12 1/4 X 16 watercolor of bluebills by Roland Clark, (1874-1957). Clark is well known as one of the most accomplished waterfowl artists and author. 900-1200

776B. Potluck, a first edition. Stories about fishing and hunting, authored by Roland Clark. In very good condition. Published in 1945 by "The Countryman Press." No photo. 45-75

776C. O/C Spoonbills by Hugh Monahan. (Irish/Canadian, (1914-1970) Monahan is well known and exhibited in Vancouver, British Columbia, Calgary, Alberta, among other places. Sight size 20 X 16. 1200-1600

777. White body lure with red face, and two treble hooks, stamped Earl Gresh on the bottom. In excellent original condition. XOC. 3 inches long. 100-200

778. Green body lure with dark green face, yellow bottom, scales on the side and two treble hooks, stamped Earl Gresh on the bottom. In XOC. 5 1/2 inches long. 100-200

779. Yellow body lure with a red face, yellow eyes, scales on the side and two treble hooks, stamped Earl Gresh on the bottom. In XOC. 5 1/2 inches long. 100-200

780. Lot of two turquoise lures with red and dark brown faces and two treble hooks. Stamped Earl Gresh on the bottoms. Excellent except for a circular area of paint loss on the front of one. 3 1/2 inches long. 175-300

781. White body lure with red face, and two treble hooks, stamped Earl Gresh on the bottom. In XOC, 3 inches long. 100-200



776A



776C

782. Lot of two white lures with red faces, lightning bolts on the sides, and two treble hooks. Stamped Earl Gresh on the bottoms. In XOC with a few minor flakes near the weights in the bottom of the front of both. 6 inches long. 150-300

783. Green frog type lure with a red face and two treble hooks. Stamped Earl Gresh on the bottom. In XOC one tiny ding. 4 inches long. 150-250

783A. Upland game hunter with dog pointing at a quail in the brush. A lovely fall scene by Harold Brett from Chatham, MA. In good condition with surface crackles and a few areas of flaking or popped paint in the upper right area. Signed lower left. Brett was the illustrator and a friend of Cape Cod author Joseph Lincoln. Brett was well known in art circles. In an original Thulin frame that is marked "Thulin 1936, #2842" along with the usual carved mark on the reverse. 6500-8500



783A



784

785



786



784. Beautifully framed group of 16 Massachusetts State Waterfowl Stamps representing the years 1974 through 1989 in unused condition. 16 inches x 20 inches. Professionally framed. XOC. 400-600

785. Wonderful etching titled "Setting Out The Decoys" by Roland Clark. In XOC. 10 ½ inches x 12 ½ inches sight size. Signed and titled in pencil. OS 1585/30 on the margin. Nicely framed. 300-450

786. Etching titled "Setting Down" by Richard Bishop with a remarque on the lower right. Signed in the margin. 9 ½ inches x 12 ½ inches sight size. In XOC except for some foxing and a tiny hole in the lower margin. Nicely framed. 300-450

786A. Oil on board of Joseph Lincoln standing in front of his workshop holding a variety of his classic decoys. By Jerome Howes. Nice gold frame. In XOC. Approximately 24 x 18 inches. 800-1200



786A

787. Canada goose decoy by Joseph Lincoln, Accord, MA. ca 1920's. All original except for in use t/u to the cheek strap. That minor white re-strike could easily be removed. Light wear along the right side of the body. Several small dings in the upper body with a few small white rub marks. Great example of an early Lincoln gunning goose decoy in overall excellent condition. Typical bottom check.

12,000-15,000

787



788



788. Wonderful example of a self-bailing brant decoy ca early 1900's by Joseph Lincoln, Accord, MA. In XOC with minor wear on a few grain lines over the tail which have been darkened professionally. Glass eyes and original rigging leather on the bottom. His best form for this model. This is the last remaining example from a Nantucket rig of a half dozen.

9000-12,000

788A. Rare early red-breasted merganser drake decoy possibly by Osgood of Salem, MA. Unusual vertically split body. Circa late 1800's. Paint appears to be partly original with a coat of sealer. Old replaced period shoe-button eyes. Carved crest with dowel in the center of the top of the head and a check extending along the top of the head. 5500-7500

788B. Early goldeneye decoy by Allen Stuart of Edgartown, ca 1900. In XOC except for a minor restoration to one tail edge and the bill tip by Steve Weaver. Nice patina. Stuart was a very talented Vineyard carver and specimens in original paint are few in number.

1800-2400

788B



788A

788C. Early red-breasted merganser drake decoy with a turned head and painted eyes by H. Keyes Chadwick, of Oak Bluffs, Martha's Vineyard, MA. In very old paint most of which has been removed showing the original painted wing patterns and back paint. Struck by shot, sliver of wood from the right edge of the tail. Great form.

4500-5000

789. Rare special order black duck decoy attributed to Joseph Lincoln, Accord. Made for the Luce Rig used on Cape Cod and Martha's Vineyard. Paint has been restored and it has had a nail repair to the base of the neck. Does not have the usual molded wing detail.

300-500

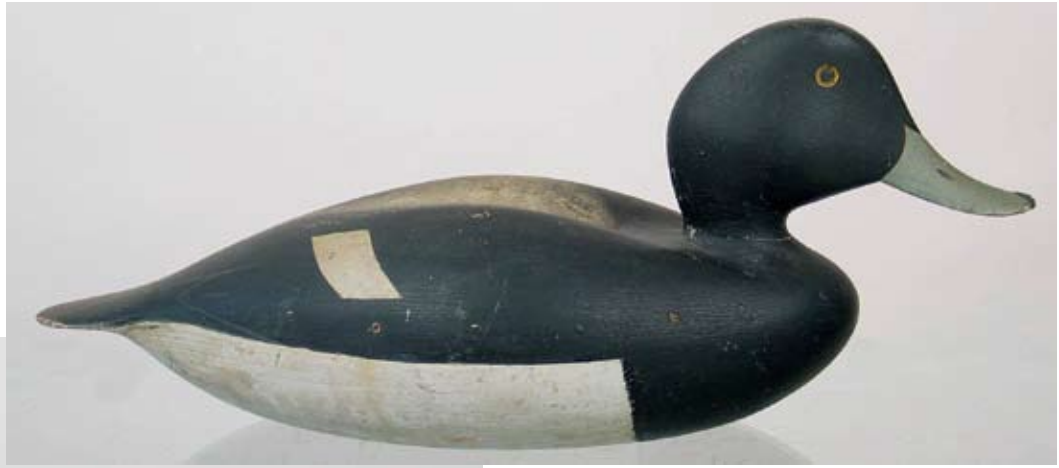
788C



789



790



791



790. Rare hollow bluebill drake by Ben Smith, Oak Bluffs, MA. In XOC. Very nice paint with a few surface scratches. Wonderful carved wing molding and a typically upturned Vineyard style bill. Directly from a Martha's Vineyard estate. 4500-5500

791. Oldsquaw drake decoy ca early 1900's from Kingston, MA. In as found original paint with in use touch-up to the black. Some crazing and flaking paint. Painted eyes. Upturned bill as is found in the early work of Captain Clarence Bailey. Weight on the bottom is a railroad spike. From the same early collection as the Lothrop Holmes turnstone, the Holmes golden plover in this sale, the early eider drake, lot 478A, and the New Jersey bufflehead, lot 718A. Doc Starr purchased his Holmes turnstone directly from this Duxbury collection back in the 40's or 50's. 3500-4500

791A. Wonderful and rare pair of goldeneye decoys by Joseph Lincoln, Accord, MA. In Excellent structural condition with paint restored in the original manner and style by Martin D. Collins. 3500-5500

791B



791A PR



791B. Rare hollow eider drake decoy from Maine ca 1900. Inletted head and neck, nicely carved bill. Good old gunning paint, roughage to the wood at the edge of the tail. Hollowed from the bottom with a one-inch thick bottom board nailed in place. Bill tip restoration by Steve Weaver. 1500-2400

792. Solid-bodied swimming widgeon drake decoy by Pittman and Chase with "AGJ" branded on the bottom. Good old working paint with a few line age checks on the body and some filler showing. Few shot scars, Small chip on the cheek and check on the end of the tail. Widgeon were common on Nantucket and Martha's Vineyard up until the last several years. Though they still frequent both Islands, their numbers have dwindled. 500-1000

792





793

793. Widgeon drake decoy by A. E. Crowell of East Harwich, MA. In XOC with possible t/u to the black paint on the tail and the white under the tail. Glass eyes, line check on the cheek, wear to paint in places, 2 impressed rectangular brands on the bottom. 3000-4500



794

794A



794. Very early canvas covered scoter decoy in old paint, tack eyes and a two piece head and neck. Canvas is tacked along a bottom board. Probably from the Kingston or Duxbury area in MA. 300-450

794A. Bluebill drake circa 1900 by Sam Collins from Essex, CT. In old very appealing paint some of which may be original. Excellent structurally. 500-750

794B. Yellowlegs by Joseph Whiting Lincoln circa early 1900's. From the same rig found in Blue Hill Maine a couple of decades ago. A spot on top of the head has been touched up professionally and two or three tiny flakes darkened. 3500-5500



794B

794C. Lesser yellowlegs found on the Connecticut shoreline. Relief carved wings rise and split over the tail. Bill professionally replaced by Steven Weaver. Struck numerous times by shot. Superb little decoy made in the early 1900's. Tack eyes. 1500-2500

794D. Plump black-bellied plover decoy in winter plumage ca. 1900 from Nantucket with excellent original paint except for a repaired area to the belly near the stick hole. Bill replaced professionally by Steven Weaver. Painted eyes. Two-piece body with one piece added vertically to gain width. 900-1200

794E. Shorebird decoy ca 1900 by Ira Hudson. Painted eyes. Slightly down-turned bill may indicate this was intended to be a small curlew. In excellent original condition from the tip of the bill to the tail. Struck by a few shot. 3500-5500



794C



794D



794E



795-796



799-800



797-798



801-802-803

795. New Jersey style curlew decoy mid to late 1900's with carved eyes, one-piece head and neck, and a split tail. Heavy aging to the surface, struck by shot. Approximately 14" long. 400-600

796. Yellowlegs decoy ca late 1900's with an alert posture and "HJA" carved into the bottom. Obviously this carver was influenced by George Boyd. In XOC. 300-450

797. Flat-sided yellowlegs with carved wing outlines and old paint. One red painted tack eye. Possibly from LI. Maker unknown. 600-900

798. Solid body lesser yellowlegs decoy with applied sides and painted tacks for eyes. Old working paint with seams visible along the bottom. 600-900

799. One piece split tail glass eye running yellowlegs decoy in old paint with crazing and flaking on the sides of the body and the face. Struck by shot. Metal bill. 600-900

800. Hollow paper-mache plover decoy with one tack eye. Bill broken, shallow dent in one side near the wing, struck by shot. Probably made by Joe Lincoln of Accord, MA. Ca. 1890-1900. 500-1000

801. Flat-sided black bellied plover decoy ca 1900 in winter plumage with a blunt bill by an unknown maker. XOC with light wear. An excellent and honest old period gunning shorebird. 500-1000

804-805



802. Shorebird whistle made out of a piece of horn. Perhaps deer horn. Stringing hole on one end. 100-200

803. Pressed paper corn decoy. In excellent original condition. 25-50

804. Long Island plover in winter plumage. Beautifully painted, somewhat flat-sided. Probably made in the early 1900's. 600-900

805. Long Island yellowlegs with carved wing outline in old paint with wear. Probably made in the 1920's. Clean neck break. 600-900

806. Pair of Long Island yellowlegs by the same maker as 805 and lot 797. Both are very good original condition with light wear. Probably made in the early 1900's. 1200-1600

807. Running plover by Alberto "Bert" Williams of Orleans, MA. In natural finish. Probably made ca 1950's. 100-200

806PR



807





808-809

808. Solid body one-piece curlew decoy with dark OP and "943" written in ink under the stick hole on the bottom. Few age checks and a sliver of wood from a knot missing on the lower left side near the tail. Mouse or kitty chews on the tail.

800-1000

809. Carved wing flat-sided running curlew decoy in old paint with a few thin age checks and shot scars. Bill has been glued at a break. Glass eyes. Approx 2 ½ inches thick.

300-500

810. Split-tail Duxbury lesser yellowlegs ca early 1900's with painted eyes in XOC. Attributed to the Goodspeed family from Duxbury by some collectors. Original bill. Acquired from Dr. Starr by the consignor.

900-1200

811. Split-tail Duxbury yellowlegs with painted eyes in XOC. Attributed to the Goodspeed family, Duxbury. Original bill. Acquired from Dr. Starr.

900-1200

812. Life sized flying yellowlegs decoy by Herbert Randall, Seabrook, NH. In XOC. Rigged to hang from screw eyes placed on the sides with fishing line on the sides. Glass eyes, solid carved outstretched wings applied to the body.

300-500



812



810-811

813. Mason Factory yellowlegs decoy in old working paint with a repair to the top of the head and a check on the back of the head. Stringing hole and a thin check in the tail.

300-500

814. Solid body split tail curlew decoy in the Cobb Island style with heavy wear and flaking to the OP. Few age checks on the sides of the body.

400-600

815. Split tail greater yellowlegs made in one piece without eyes. Appears to be OP with light wear and a few areas of flaking. Top edge of the tail is cracked and part is missing. Partial neck check. Knot from the top to the bottom on the back near the tail. Acquired from Dr. Starr by the consignor.

500-750

816. Nantucket split-tail golden plover decoy ca 1880 with a solid body and a three-piece head. Center section of the head has a check. Head has a very old repair with nails. Original bill with damage. Acquired from Dr. Starr by the consignor.

1200-1800



813-814



815-816



817



"Square" Gould

817A



818



819



820. Pair of mallard decoys glass eyes branded "AW" for the maker Alberto "Bert" Williams, Orleans, MA. In XOC. "Drake Mallard, 1990" and "Hen Mallard, 1990" written on the bottom in ink. 200-400

821. Running black bellied plover decoy on a painted wooden stand branded "AW" FOR Alberto "Bert" Williams. Glass eyes, split tail. 75-125

822. Preening black duck decoy with an old Dodge Factory body and a head carved by Bert Williams, Orleans, MA. Painted in the Crowell style. 50-75

817. Black duck by Elmer Crowell of East Harwich, MA. with the early oval brand on the bottom. Head paint is virtually mint. The body paint is old with numerous chips and dings of various sizes. 1800-2500

817A. Beautiful turned head American merganser drake decoy with glass eyes and a solid body. Bottom is signed "M. H. Gould, Myrtle Beach, SC" inside a carved square. The late "Square" Gould, from Orleans, Cape Cod, spent some time in South Carolina in the winter. 800-1200

818. Resting golden eye hen decoy in XOC. Made in the Crowell style and signed in pencil "Ken Young, 1960" on the bottom in pencil. 200-300

819. Resting turned head mallard drake decoy with nicely carved wing and tail feathers and glass eyes in XOC. "M. H. Gould, '63" inside a carved square on the bottom. 400-600



820PR



821-822



823-824

The following 12 lots are by Roger Mitchell (1944 -) of Kingston, Massachusetts. For many years he taught his craft to aspiring bird carvers in the New England area. All of the carvings made by Roger Mitchell in this sale are signed with his ink stamp and all are in XOC.

823. Red-breasted merganser drake in the style of Elmer Crowell by Roger Mitchell. Mellow paint. 250-450

824. Lifesize feeding hooded merganser drake by Roger Mitchell. Mounted on a large quahog (hard shell clam) shell. Wonderful mellow paint. Imaginative form. 250-450



824A-825



826-827



828-829-230



831-832-833



834



835

824A. Lifesize wood duck drake by Roger Mitchell. Beautifully painted. 250-450

825. Lifesize green-wing teal drake by Roger Mitchell. 250-450

826. Lifesize pintail drake by Roger Mitchell. 250-450

827. Lifesize hooded merganser drake by Roger Mitchell. Outstanding paint. 250-450

828. Miniature feeding hooded merganser drake by Roger Mitchell. 250-400

829. Miniature feeding canvasback drake by Roger Mitchell. 250-450

830. Miniature preening pintail drake by Roger Mitchell. 300-500

831. Miniature pintail drake in the standard upright pose by Roger Mitchell. 250-450

832. Miniature Bufflehead drake in an upright pose by Roger Mitchell. 250-450

833. Miniature Greenwing teal drake by Roger Mitchell. 250-450

834. Swan decoy with a slat body and solid head in old paint. Neck tightened professionally by Steve Weaver. Found on Cape Cod. OP with flaking and wear, tack eyes. The head and neck are carved in a Maryland/North Carolina manner. 250-450

835. Canada goose decoy by Joseph Lincoln with solid body and glass eyes. In restoration ready condition with a partially replaced bill, tail edge wood replacement, an old neck check and wood strips in a large check in the side. The entire decoy was covered with gold paint that has been removed to remaining OP. 1000-1500

836. Hollow Canada goose decoy by Ira Hudson, Chincoteague, VA with no eyes. Made in the Shourds style. In very old gunning paint with body checks. The mid seam is open slightly in places. Paint is flaking on the breast and lower sides. This is Hudson's classic "Jersey shore model". 500-1000

836



837



838



837. Solid-bodied swimming Canada goose decoy with a strong attribution to Alfred Gardner of Hingham, MA. Large glass eyes. In old original paint with in use working over paint Average in use wear. 300-500

838. Black duck decoy ca early 1900's, with carved wings. Originally it was a canvasback. Strong attribution to Travis Ward (father of the famous Ward Brothers), of Crisfield, MD. One tack and one glass eye. A thin check from the breast to the side of the tail on the right side. Chip from the left edge of the tail. In good old paint by the Ward's. There is a carved "T" in the bottom. 1200-1800

839. Perky goldeneye decoy with glass eyes from Nova Scotia. Very old paint with some early old crazed original. The neck has a narrow check low in the neck and has been re-nailed long ago to the neck seat. Similar to Lunenburg County decoys and the work of Bachman. 600-900

840. Solid-bodied red-breasted merganser hen decoy with glass eyes by Luther Nickerson, Cotuit, MA. In excellent original paint with "possible" very old t/u by Luther to the wing patch. This decoy is from the family rig. 2500-3500

841. Solid body eider drake decoy from Maine or Nova Scotia with very old gunning paint with heavy wear. No eyes, deep keel on the bottom, thin neck check. Nice form. 300-500



842

839



840



841



842. Excellent mallard drake with the head turned sharply to the right. Wings are carved on the body. Glass eyes. In XOC in all respects by the late champion carver Harry Ross. Mr. Ross was one of the founders of the Wildfowler Decoy Company in Old Saybrook, CT. He was also a multiple ribbon winner at the Nationals in Babylon, LI, back in the mid 1900's. This exact decoy won a red ribbon in 1947 at Nationals. The keel has since been removed. Head made of pine, dense balsa used for the body. 400-600
Provenance: Fairbank collection

843. Bluebill hen decoy by Harry Ross. Carved in a resting position with the head sharply turned to the left. Outstanding original stipple and feather paint and the decoy is in excellent original condition. (XOC). Keel removed. Very detailed stipple and feather painting. Made when he lived and worked with Wildfowler in Old Saybrook, CT. This decoy won a blue ribbon at the National Decoy Show in 1951. 400-600
Provenance: Fairbank collection

843





844



844A



844. Black duck by the late carver Phil Fairbank. Mr. Fairbank was a good friend and a hunting and fishing companion of Ted Mulliken, Harry Ross, and others from the Old Saybrook School of carving. Outstanding, hollow carved black duck.

500-1000

Provenance: Fairbank collection

844A. Very early Mason Premier black duck decoy with deep swirl paint as only Mason could do. Tight check in neck. Outstanding example. A tail chip has been restored beautifully by Paul Fortin and is not detectable to the eye. Recently found in a New England home.

3000-5000

845. Hooded merganser drake decoy by Harry Ross, Norway, Maine. Made after Mr. Ross moved to Maine. Signed on the bottom.

400-600

846. Bluewinged Teal drake by Harry Ross. Made after he moved to Norway, Maine. In XOC. Signed on the bottom in ink.

400-600

847. Deep-bodied widgeon drake decoy by Harry Ross. Made after he moved from Old Saybrook to Norway, Maine. Signed on the bottom. In XOC.

400-600

848. Canvasback drake decoy by Harry Ross Norway, Maine. Turned head and glass eyes. Signed on the bottom. XOC.

300-500

849. Turned head Canada goose decoy by Harry Ross, Norway, Maine. Glass eyes, Signed "Harry Ross, '80" on the bottom.

800-1200



849



845-846
847-848



850-851

853PR
854-855



852



850. Decorative lifesize loon on a log base by Harry Ross, Norway, Maine. In XOC. Outstanding carving with exquisite paint. 500-1000

854. Interesting mounted mallard heads by Mitchell La France, Louisiana. In XOC. Felt on the bottom of the base with identification and signature. 100-200

851. Magnificent hooded merganser drake by Harry Ross Norway, Maine. Mounted on a log similar to the way "Shang" Wheeler mounted his decorative birds. An excellent example of this man's ability as a master carver and decoy maker. Signed. In XOC. 500-1000

855. Pintail drake decoy by Harry Ross Norway, Maine. In XOC. Signed under the bill in paint. 350-550

852. Elongated pintail hen ca early 1900's from North Carolina. Canvas over a wire frame. Paint on the head is probably old repaint. There is a little roughage to the bill tip. 300-500

855A. Split-tail yellowlegs decoy ca early 1900's. A so-called "Connecticut Lumberyard Decoy". Said to have been carved in a Connecticut lumberyard during the winter slowdown and sold in the spring to shorebird hunters. Carved eye grooves high on the head and small tack eyes. In good old gunning paint that has a few flakes and some crazing. 500-750
Provenance: Fairbank collection

853. Pair of hollow bufflehead decoys by Clarence Fennimore. In XOC. Signed on the bottom in ink and rigged for use. 300-500

856. Cape Cod knot decoy ca 1900 in very old gunning paint that appears to be original. Surface is chip carved, struck by a few shot and has a narrow check along the right side of the bottom. 400-600
Provenance: Fairbank collection



857. Plump-bodied red breasted dowitcher decoy with a nail bill from Long Island, NY. Nicely carved with the suggestion of wings over the back and a full crop. Paint is old and appears to be original. There is a narrow check on the right side of the body and an area of paint flaking on the left side over an area of old filler. No eyes. 800-1200
Provenance: Fairbank collection

855A-856-857



858



859



860

858. Massachusetts split-tail plover decoy ca 1900 with no eyes and good old gunning paint. Large knot on the back that is also visible on the breast with some paint flaking on the margins of the knots. Struck by shot. 800-1200
Provenance: Fairbank collection

859. NJ black-bellied plover decoy ca 1900 with painted eyes and an interesting circular tail. In old gunning paint with original. Some wear and shot scars. Original bill. 800-1200
Provenance: Fairbank collection

860. Carved-wing turned head golden plover decoy ca 1900 with tack eyes and good OP. Bill may be a replacement. Made with a separate head attached to the body at the lower neck. Shallow carved wing and wingtip detail. Folky yellowlegs decoys by this maker have been found in the Seabrook area of New Hampshire. From an old North Shore mass collection. Purchased from Donald Howes in the 60's or 70's. 2500-3500

861. Black-bellied plover decoy by William Mathews ca 1885, of Chincoteague, VA. In good old original paint with carved wing detail on the back. Struck by a few shot. Nice folky form. Painted eyes. Typical Mathews features are the flat side to the bill, and the V shaped wing carving. See pages 104 and 105 in "Shorebirds" by Levinson and Headley for information regarding this maker. 2500-3500
Provenance: Fairbank collection

862. Early dowitcher decoy ca late 1800's from LI with the small "duck" shaped body and attached head. Possibly by Birch or Verity. Struck by shot. In old paint with a red breast and no eyes. 800-1200
Provenance: Fairbank collection



861



862



863

863. Morton type solid-bodied plover decoy ca 1900 with the typical wide bottom, blunt tail, and flat top head. In fine original paint with possible in use t/u to a few spots on the black. Surface has a coat of light wax or sealer. Nice form. Some claim Nantucket as the origin of these decoys. Others feel they were made in the North River or south shore area of Massachusetts. One rig was found with the Morton brand on it in the 80's. 2500-3500
Provenance: Fairbank collection



864-865

864. Flat sided willett decoy ca 1900. About 2 ½ inches wide with no eyes and nice old gunning paint. Struck by shot, thin check in the lower right side. 700-900
Provenance: Fairbank collection

865. NJ curlew decoy ca 1900. In worn good old original paint with some flaking over original knot filler on the back. Painted eyes and wear to the surface showing wood in places. Possibly from the Tuckerton area as it is similar in form to a Shourds. 1200-1600
Provenance: Fairbank collection

866. Knot or plover decoy ca 1900 in old paint from NJ with a large knot on the mid back that is visible on the breast on the right side. Old gunning paint with wear and OP visible beneath. Struck by shot. 400-600
Provenance: Fairbank collection
866-867



867. NJ black-bellied plover decoy ca 1900 in nice old over paint with painted eyes and a nail bill. Struck by a few shot. 450-550
Provenance: Fairbank collection

867A. Delaware River black duck ca. early 1900's. Excellent black duck with the typical raised wing tips in the Delaware River tradition. In fine old gunning paint mixed with some original. 500-1000

868. Outstanding mallard hen decoy by Domingo Campo with glass eyes, nicely pegged neck and carved wing outlines and tail detail. Left side has a vertical seam visible due to wood shrinkage. Nicely painted. Struck by shot. 4000-5500



867A

868





869



870



871

871. Mallard hen decoy by Mitchell LaFrance with glass eyes, carved wing and tail outlines. In XOC with light wear and a sliver of wood from the back that occurred before the bird was painted. Struck by a few shot. Few minor surface dents. 4500-6500

872. Turned head canvasback drake decoy by George Frederick

869. White-fronted goose decoy from LA. Bill restored professionally, otherwise in very good original paint. Maker unknown. 300-500

circa 1957. In XOC. Nicely upswept tail and incised feather carving along the front of the wings. Carved wing outlines and glass eyes. Weight removed. 2500-3500

870. RARE Specie. A well documented black duck decoy by LaFrance and Joffreau has been in multiple exhibits from Louisiana to Los Angeles, California with the most recent exhibit held in 1993. In excellent original condition with the usual gunning imperfections, minor dents, nicks. "Possibly" a restoration under the tail. Charley Frank tag #208. Several tags on the bottom. First tag reads in script "Charles Joffreau Mitchel LaFrance #208" below that in print "Charles Numa Joffrau black mallard". Another exhibit tag reads "University of New Orleans Art Department September, 1976 No. 188" Another tag reads "West Baton Rouge Historical Association Nov./ Dec. 1976 No. 85". Additional exhibit tags read "Exhibited at the Hillsborough County Museum Tampa, Florida Cat No. F556-L Date 8/2/76". Another tag reads "New Orleans Museum of Art August/September, 1975 No. 101". Also exhibited at the "Live Oaks Garden Gallery Jefferson I. La. Jan-Feb'93 My #-Live Oak#" and another tag reads "Museum of Afro-American History and Culture, Los Angeles, -1/82-9/30/82".

5500-7500

873. Three bufflehead decoys found in a Yarmouth duck camp in the 1950's. In old in use gunning paint. Heads swivel. Diminutive and charming set of three. 300-500

872



873(3)



874. Merganser with a horsehair crest by Bob Mosher of Hingham, MA. An early carving by this talented carver. Hollow carved. 200-300

875. Factory made black duck ca early to mid 1900's in fine original paint. Possibly by the Herter Company. 100-200

876. Wildfowler black duck decoy. Appears to be in Wildfowler paint but probably sent back to the factory for a second coating, a common practice. 100-200

877. Pair of hollow molded dove decoys that clip onto a fencepost or tree branch. They appear to be made by the Plasti-Duk Decoy Co. ca 1955 to present. Plasti-Duk, formerly of Berkeley, California, is now located in Klamath Falls, Oregon. 50-75

878. Long Island bluebill by the Verity family. The head and neck have been replaced. 75-125



878A. RARE Redhead drake by James Look (1862-1926) of West Tisbury, Martha's Vineyard. Not many of these classics exist in any condition as Look is such an early carver. Probably by Look himself as this decoy came out of the Look family barn in 2005 as well as the lots below and lots 2, 3, 4, 372, and 790. Most of those are in this sale. Painted eyes. Nicely up-turned bill so typical of Vineyard decoys. Circular weight attached to the bottom. Old chip off the tail edge. Head swivels. 1500-2500

878B. (2) Two early ca 1900 relics from Martha's Vineyard. Head loose on one. One is hollow carved. Both have some old paint and wing carving. From the Look family barn. 300-500

878C. Early, turn of the century, Martha's Vineyard relic. A charming old weathered veteran from the Look family barn. 200-400

878D. (2) Two early (1890-1910) Mason Decoy Factory painted eye broadbills. From the Look family barn. In old paint with some original. 300-500

