

Decoys Unlimited, Inc. Theodore S. Harmon

Ted and Judy Harmon

of

DECOYS UNLIMITED, INC.

presents

**OUR ANNUAL
SUMMER DECOY & AMERICANA SALE**

Monday & Tuesday, July 31-August 1, 2006

at the

Cape Codder Resort and Hotel

Hyannis, MA

Telephone: 1-888-297-2200

www.decoysunlimitedinc.com

e-mail: theodores.harmon@comcast.net

SALE: Monday, July 31 • Americana sale starts at 12 PM.

The decoy sale follows immediately at the conclusion of the Americana section.

Tuesday, August 1 • 11 AM

PREVIEW: Sunday, July 30 • 6-8 PM

Monday, July 31 • 9 AM - 12 PM

Tuesday, August 1 • 8 AM - 11 PM

Phone and Absentee Bidding Information

See Directions in Back of Catalog

For absentee or phone bidding please call Ted Harmon – (508) 362-2766

TERMINOLOGY:

XOP - Excellent Original Paint

XOC - Excellent Original Condition

OP - Original Paint

T/U - Touch Up

For more information contact: Ted Harmon, P.O. Box 206, West Barnstable, MA 02668 • (508) 362-2766

See Conditions of Sale – Back of Catalog

A few words about Dr. Harvey Pitt as remembered by his friend and business partner in P&D Decoys, Mr. Ed Dunham.

What to do with the decoy collection?

As Pitt lay recovering in a Springfield, IL hospital bed, watching an electric heart monitor confirm he was still alive, the ageing duck hunter realized the rules of material possessions hadn't changed since 1927. That was the year he was born, which meant he had lived a full life already. Even before that near fatal heart attack in November 2000, Pitt long understood how life and death work.

Nobody slips into the afterlife with souvenirs collected on earth. Not even a truckload of antique waterfowl decoys.

Pitt thought anxiously about those decoys – The Ward Brothers, the Perdews, the prized Masons, – every last precious one of them. He envisioned how his cherished waterfowl collection would remain after he died, treasures meticulously arranged on the very shelves where he'd left them, all going nowhere. Unless he did something about it.

So... Harvey Pitt had to make a decision. Nobody would be around to inherit his collection.

"When I was in that hospital staring at that monitor, I decided what to do about the collection" Pitt recalled. "The day I came home I told Mickey (Winifred Pitt, Harvey's wife) to call McKendree". McKendree in Lebanon, IL is one of the colleges Harvey attended.

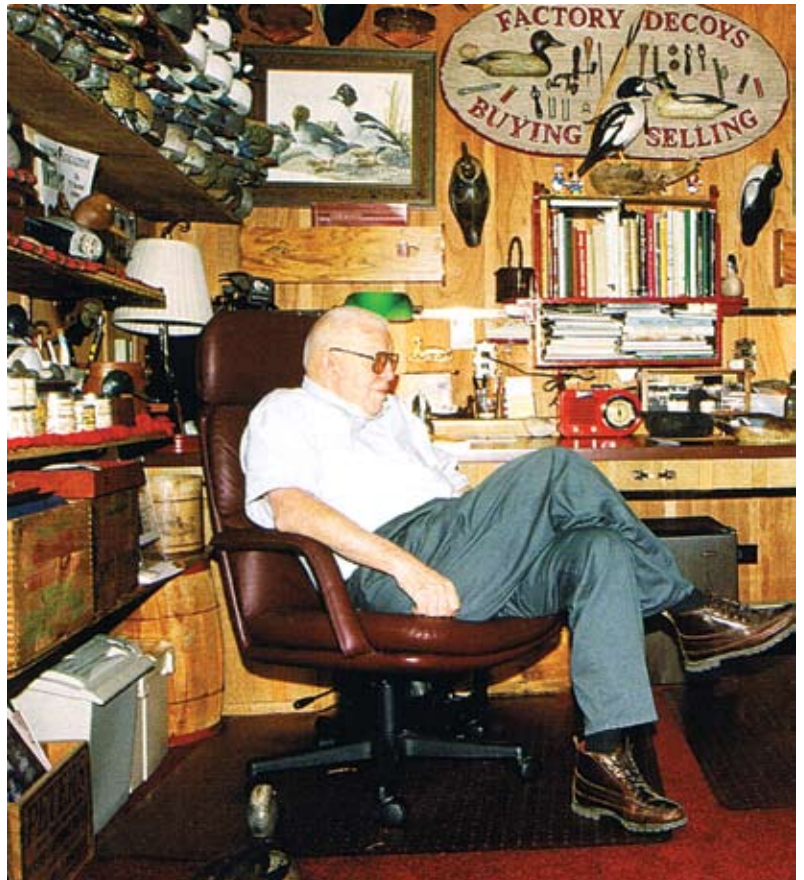
This lifetime student realized there was, after all, a selfless solution to his mortal fate. His valuable collection could be sold to create an educational scholarship especially for needy biology students. Pitt's 40 year accumulation of waterfowl rarities would be transformed into a posthumous gift to biology students who needed financial help.

Excerpted from "Outdoor, Illinois" October 2002, by Joe McFarland.

"Harvey Pitt lived an entire lifetime committed to the enjoyment and protection of the southern Illinois environment and fought tenaciously to preserve and protect threatened local ecosystems"

Quote from "Proclamation – City of Duquoin, Illinois".

Dr. Harvey Pitt had a deep concern that future generations would not be able to sit in a duck blind, watch the sun come up over the water with flocks of waterfowl over head and a spread of decoys in front of the blind. Maybe in some way the scholarship for biology students to be created from the sale of his decoy collection will help future generations see some of those beautiful sunrises that Dr. Pitt so enjoyed.



DAY ONE - Monday, July 31, 2006



1

1. This Superb Mason Detroit Grade Glass Eye Widgeon Drake Decoy is in XOC. See photos on web site and catalog. Neck filler original with minor cracking. Check on the bottom from the front to back. Weight removed. A little wear on right side of the tail. Pictured on top of page 170 in Luckey and Lewis book.

2500-4500

Provenance: Pitt collection.

Literature: Collecting Antique Bird Decoys and Duck Calls.

2. This Rare Mason Factory Detroit Grade Tack Eye Merganser Drake is in XOC. Neck filler intact. A few narrow checks on the bottom. Sliver of wood missing from the edge of the circular inlet weight.

2500-4500

Provenance: Look family rig.

3. Rare Mason Factory Detroit Grade Tack Eye merganser hen decoy in great OP with unusual sponge detail painting. Neck filler is cracked with a few tiny flakes missing. Two narrow grain line checks on the back with a few flakes of paint missing. Narrow check on the right side of the bottom and from the weight to near the tail with filler. Professional restoration to mouse chews on 1/3 of the right edge of the bill by K.E. Delong.

1200-1800

Provenance: Look family rig.

3



2





4

4. **Rare Mason Factory Detroit Grade Tack Eye merganser drake in fine OP.** Neck filler replaced and mouse chews on the 1 ½ in of the left edge of the tail professionally restored by K. E. Delong. Narrow check on the lower right side, check on the left side of the bottom with filler and t/u. 1500-2500
Provenance: Look family rig.



5

5. **Very rare Peterson Factory barrows goldeneye drake decoy with glass eyes and worn OP.** Two open checks on the back along the grain from neck and two others originating mid back to the tail. Neck seam has been glued. Wear to the top of the head. Inlet circular weight on the bottom. Pictured on the bottom of page 151, Luckey and Lewis. Though attributed to Dodge it is a Peterson. See bottom of page 293-296 in NAFD by Ken Trayer where a pair of Peterson Barrows goldeneye are pictured on the bottom left of 295. This factory was in operation between 1873-1883. 4500-7500

6. **Very rare pair of Mason Factory Low Head Challenge Grade Glass Eye bluebill decoys with "E.Q." branded into the bottom.** Both have some over paint mostly to the white areas along the sides of the bodies and some feathers. Structure is sound. Weights removed. Hen has more over paint than the drake. Light coat of scaler. 3500-4500
Provenance: Pitt collection

7. **Mason Factory Detroit Grade Glass Eye bluebill drake decoy in good OP with wear and a few rubs and dents.** Struck by a few shot. 400-600
Provenance: Pitt collection



6PR

Provenance: Pitt collection.
Literature: Collecting Antique Bird Decoys and Duck Calls.



7

8



8. **Mason Factory Detroit Grade Glass Eye bluebill hen decoy in good OP with wear and a few chips to the paint along the sides of the body. "HFS" brand on the bottom. 350-450**
Provenance: Pitt collection



9

10



9. **Mason Factory Challenge Grade mallard drake decoy with glass eyes in OP with some t/u to white on the tail, feathers on the back and a few spots on the head. Seam is open and neck filler is missing. Two tail chips, check on the left side under the seam, Struck by shot. Appears to be the decoy on page 171 in the Luckey and Lewis book. 1200-1800**
Provenance: Pitt collection.

Literature: Collecting Antique Bird Decoys and Duck Calls.

12. **Mason Factory Premier Grade mallard hen decoy in fine OP with nice form and light wear to the surface. Typical tail chip (1 in x 1 in) with restoration, struck by a few shot, knot on lower right side, and seam line open with filler. Head glued in place. 2000-3000**

10. **Mason Premier bluebill drake in fine original paint with a couple minor rubs and worn areas on the upper body. See photos on web and in catalog. Glass eyes, carved F just below the lead weight on the bottom. #18 is written near the lead. 1500-2500**

11. **Mason Factory Premier Grade mallard drake decoy in fine OP with nice form and light wear to the top of the head and the edges of the bill. Typical tail chip (1 in x 1 ½ inch) with repair, struck by a few shot, and seam line open with filler visible. Head glued in place. 2000-3000**

12





13



14

13. Rare hollow Mason Factory Challenge Grade black duck decoy with one glass eye missing otherwise if fine original paint. Wear to wood in places on the body and the sides of the head with a coat of finish feeder. Seam line visible, few knots and dents on the body. 900-1200

14. Mason Factory yellowlegs decoy in XOC with wear and some darkening of the surface due to age. Glass eyes and nail bill. Struck by a few large shot on the upper body. Best Mason Paint style. 3500-4000

15. Mason Factory solid body Seneca Lake canvasback drake decoy in good OP. Tail break on the right edge glued. A knot is on the back along with a few small checks. Four or five line checks on the breast extending from the heartwood. Wear to paint on the top of the head. Struck by a few shot. Check on the bottom, branded "AOG". Pictured on the middle shelf on the upper left of page 483 in Luckey and Lewis.

1500-2500

Provenance: Pitt collection.

Literature: Collecting Antique Bird Decoys and Duck Calls.

15



16. Mason Factory solid body Seneca Lake canvasback hen decoy in good OP with average in use wear to the surface and rub spots to wood on the top and sides of the head and the right wing. Knot on the right side of the back, few age line checks in the body. Struck by shot under the bill. Pictured on the middle shelf on the upper left of page 483 in Luckey and Lewis. 1500-2500

Provenance: Pitt collection.

Literature: Collecting Antique Bird Decoys and Duck Calls.

16





17



19

18



20



17. Mason Factory solid body Seneca Lake canvasback drake decoy in good OP with average in use wear and surface grime. Neck check, struck by shot on the bill and head. Roughage along the left edge of the bill. 900-1200

18. Early hollow pine (with a circular bottom board) Wildfowler Factory pintail drake from Old Saybrook in fine original paint. Old neck check glued. Knot burn on right side of the body and a sliver of wood from the lower right edge. No keel or brand. 300-500

Provenance: Pitt collection.

Literature: Collecting Antique Bird Decoys and Duck Calls.

20. Wildfowler Factory goldeneye hen decoy of pine or dense balsa in XOC with a few surface rubs and a thin check in the back of the head. Original keel, no brand, Old Saybrook vintage. Bold deep body style. Rig mate to above decoy. 300-500

Provenance: Pitt collection.

19. Early Wildfowler Factory glass eye goldeneye drake decoy of pine or dense balsa in XOC with a few minor paint imperfections. Original keel, no brand, Old Saybrook vintage. Bold deep body style. 300-450

Provenance: Pitt collection.

21. Exceedingly Rare miniature preening Canada goose by A. E. Crowell, East Harwich, MA. with split tail and fabulous paint detail and warm mellow patina. Rectangular impressed brand on the bottom of the base. 9,000-12,000



21

IMPORTANT CROWELL MINIATURE GOOSE





22-23-24



26-27-28

22. Miniature wood duck drake by A. E. Crowell, East Harwich, MA. In XOC. Rectangular impressed brand on the bottom of the base along with "Donald B. Howes" owner ink stamp. 3000-4500

23. Miniature mallard drake by A. E. Crowell, East Harwich, MA. In XOC. Rectangular impressed brand on the bottom of the base along with "Donald B. Howes, Antiques" owner ink stamp. 2000-3000

24. Miniature redhead drake by A. E. Crowell of East Harwich, MA. In XOC. "Red Head Duck and 1945" in pencil and rectangular impressed brand on the bottom. Provenance: Howes collection. 2500-3500

25. Exceptional double mount of a mallard pair on carved wood base by A. E. Crowell, East Harwich, MA. In excellent original condition (XOC). Impressed rectangular stamp on the bottom. 3500-5500

26. Miniature bufflehead drake by A. E. Crowell, East Harwich, MA. In XOC. Rectangular impressed brand on the bottom of the base along with "Donald B. Howes" owner ink stamp. 2500-3500

27. Miniature common tern on carved rock base by A. E. Crowell, East Harwich, MA in XOC. Half of a blue paper label attached to the bottom of the base along with a "Donald B. Howes" ink stamp. 2500-3500



28. Great blue heron by the late Harold Gibbs of Barrington, RI. Signed and dated 1967. In excellent original condition (XOC). Mr. Gibbs, a renowned saltwater sportsman and miniature carver, was born in Rock Village, near Middleboro, MA. 600-900 Provenance: Howes collection.

25PR



29-30-31

32-33-34



29. **Miniature Baltimore oriole with dropped wings** by A. E. Crowell, East Harwich, MA. In XOC with the impressed rectangular brand on the bottom of the base.

1800-2400

30. **Miniature goldfinch** by A. E. Crowell, East Harwich, MA. In XOC with the impressed rectangular brand and #24 in pencil on the bottom of the base.

1800-2400

31. **Miniature red-headed woodpecker** by A. E. Crowell, East Harwich, MA. In XOC with a faint circular ink stamp and #10 in pencil on the bottom of the base. Light crazing on the head.

2000-2600

32. **Miniature robin** by A. E. Crowell, East Harwich, MA. In XOC with the impressed rectangular brand on the bottom of the base.

1800-2400

33. **Miniature indigo bunting** by A. E. Crowell, East Harwich, MA. In XOC with the impressed rectangular brand and #20 in pencil on the bottom of the base.

1800-2400

34. **Miniature towhee** by A. E. Crowell, East Harwich, MA. in XOC with the impressed rectangular brand on the bottom of the base. Minor crazing on the body.

1800-2400

35. **Very tiny miniature chickadee** by A. E. Crowell, East Harwich, MA. In XOC with the impressed rectangular brand and #23 in pencil on the bottom of the base.

1800-2400

36. **Miniature flicker** by A. E. Crowell, East Harwich, MA. In XOC with the impressed rectangular brand and #18 on the bottom of the base.

1800-2400

37. **Miniature meadowlark** by A. E. Crowell, East Harwich, MA. In XOC with the "Meadow Lark" written in ink on the bottom of the base.

1800-2400

38. **Miniature goldfinch** by A. E. Crowell, East Harwich, MA. In XOC with the impressed rectangular brand on the bottom of the base.

1800-2400

39. **Miniature thrasher** by A. E. Crowell, East Harwich, MA. In XOC with the impressed rectangular brand on the bottom of the base.

1800-2400



38-39

35-36-37





40-41-42

43-44-45

40. Miniature wood duck drake by Harold Gibbs on a small driftwood base in XOC. Signed "H. Gibbs" along with the "Donald B. Howes" ink stamp. 600-800

41. Miniature red-breasted merganser drake by Harold Gibbs on a small driftwood base in XOC. Signed "H. Gibbs, Aug. 1969" along with the "Donald B. Howes" ink stamp on the bottom of the base. 600-800

42. Miniature hooded merganser drake by Harold Gibbs on a small driftwood base in XOC. Signed "H. Gibbs, 1968" along with the "Donald B. Howes" ink stamp on the bottom of the base. 600-900

43. Miniature ruffed grouse by Harold Gibbs on a small burl base in XOC. Signed "H Gibbs, 1969, Grouse", with a "Donald B. Howes Antiques" ink stamp on the bottom of the base. 700-900

44. Miniature quail by Harold Gibbs on a small burl base in XOC. Signed "H Gibbs, March 1969, Quail", with a "Donald B. Howes Antiques" ink stamp on the bottom of the base. 700-900

45. Miniature woodcock by Harold Gibbs on a small burl base in XOC. Signed "H Gibbs, 1969, Woodcock", with a "Donald B. Howes Antiques" ink stamp on the bottom of the base. 600-800



46. Miniature preening Canada goose on a circular painted wooden base signed "J. Lapham, Dennisport, Mass" with a "Donald B. Howes" ink stamp on the bottom of the base. In excellent original condition (XOC). 700-900

47. Miniature American brant on a driftwood base in XOC. Signed "J. Lapham, Dennisport, Mass, Am Brant, Atlantic Coast" on the bottom of the base along with a "Donald B. Howes" ink stamp. 700-900

48. Miniature Canada goose with a turned head on a driftwood base in XOC. Signed "J. Lapham, Dennisport, Mass, Canada Goose" on the bottom of the base along with a "Donald B. Howes" ink stamp. 700-900

46-47-48



49-50



51-52-53

49. Mini redbreasted merganser drake on a driftwood base in XOC. Signed "J. Lapham, Dennisport, Mass, Red Breasted Merganser" on the bottom of the base. 700-900

50. Miniature hooded merganser drake on a driftwood base in XOC. Signed "J. Lapham, Dennisport, Mass, Hooded Merganser" on the bottom of the base along with a "Donald B. Howes" ink stamp. 700-900

51. Miniature mallard drake complete with a tail feather curl on a driftwood base in XOC. Signed "Mallard Drake, J. Lapham, Dennisport, Mass" with a "Donald B. Howes" ink stamp on the bottom of the base. 700-900

52. Miniature open-bill mallard hen on a driftwood base signed "Made For Don Howes, J. Lapham, Dennisport, Mass, Mallard Hen" on the bottom of the base. XOC. 800-1200

53. Miniature black duck preener with split wings on a small branch base in XOC. Signed "J. Lapham, Dennisport, Mass" on the bottom of the base. 900-1200

54. Miniature piping plover with glass eyes on a carved painted clamshell by Jerome Howes in XOC. "Piping Plover, Merry Christmas, Dad, '78", Jerome Howes", written on the bottom of the base. 300-500
Provenance: Howes collection.

55. Miniature ring neck plover with split wings and tail detail by Jerome Howes in XOC. "Ring Neck Plover, J. Howes, Dec. 1974" written on the bottom of the base. 300-500
Provenance: Howes collection.

56. Miniature ring neck plover with painted eyes and split tail by Jerome Howes in XOC. "Ring Neck Plover, Jerry Howes, 1973" written on the bottom of the base. 300-500
Provenance: Howes collection.

57. Half model of a sleeping black duck decoy on an oval stained wooden plaque in XOC. Signed on the back "Jerry Howes, 1973". 250-450
Provenance: Howes collection.

54-55-56



57





58

58. Rare freshwater sunfish carving by Morence "Square" Gould in XOC with minor imperfections. Glue to breaks on the edges of the tail and one point on the upper fin. Brightly colored and nicely detailed carving. A carved square with "M. H. Gould" and "1967" written inside along with "D.B.H. Private Collection" in pencil on the back. The late "Square" Gould, Chatham, Cape Cod and Brunswick, Maine, made both duck decoys and exquisite fish carvings.
Provenance: Howes collection. 800-1200



61

61. Half sized wall mount Canada goose flyer in XOC, signed "Canada Goose, J. Lapham, Dennisport, Mass" on the back. Beautifully carved and painted. 1200-1800
Provenance: Howes collection.

59. Life size flying wall mount quail with glass eyes by R. G. Jansson, Cummaquid, MA. In XOC. Branded "R. G. Jansson, Cape Cod" inside an impressed rectangle on the back. Outstanding example by the late "Gustave" Jansson. 1200-1800

60. Life sized robin on a circular painted wooden base in XOC. Signed "Robin, J. Lapham, Dennisport, Mass".
Provenance: Howes collection. 800-1200

62. Mini wall mount snowy owl on driftwood signed "G. E. Goltz" and "174". XOC. 200-300



62



59-60



63

64PR-65



69(2)

66
67-68

69. Lot of two decorative near life size carvings by Herman C. Bennett. A yellowlegs with glass eyes, signed and dated 1978 on the bottom and a little green heron with glass eyes. Both have damage to the legs (bent with putty cracked). 300-500
Provenance: Joe French collection.

69A. Harryman print of the Ward brothers titled "L. T. Ward & Bro, Wildfowl Counterfeiters".

Signed by both brothers and the artist and framed with a copy of a poem, not shown, by Truman Reitmeyer that Lem often quoted. Print is 16 1/2" x 21 3/4" In XOC. Pictured on Mr. Pitts wall on bottom of page 489 in the Luckey and Lewis book.

Provenance: Pitt collection. 200-400
Literature: Collecting Antique Bird Decoys and Duck Calls.

63. Tiny miniature songbirds on a branch by an unknown maker. 200-400

64. Pair of double mounted miniature green-wing teal by James Ahearn in XOC. No signature. 300-500

65. Miniature paperweight green wing teal drake decoy by the American Fieldcraft Company, Boston, MA. In XOC with felt on the bottom of the base. 300-500

66. Swimming red breasted merganser drake decoy with glass eyes and a turned head in XOP by Al White, Sandwich, MA. Impressed "White" brand on the bottom. The late Al White of Cape Cod was internationally recognized as one of the finest gun engravers in the world. He worked exclusively for the Colt Company and made decoys for fun mostly as gifts for his friends. 800-1200
Provenance: Howes collection.

67. Turned head preening mallard drake decoy with two "Made in Canada" ink stamps on the bottom in OP with glass eyes. Check in the bottom with original filler. 100-150
Provenance: Howes collection.

68. Half sized canvasback drake decoy in XOC with nicely carved wing and tail detail and glass eyes by Jerome Howes. Signed on the bottom "J. Howes, 93 Xmas, for DBH" Felt on the bottom around the signature. 100-150
Provenance: Howes collection.



69A



70



70. Incredible preening pintail drake decoy model by the Ward Brothers, Crisfield, MD in XOC. Beautifully carved lifted wing with bill beneath, crossed wing tip feathers and sleepy eyes. Bottom reads “Anas Acuta, L. T. Ward, Crisfield,

MD, Deluxe Grade”. Pictured on the bottom of page 84 in the book by Luckey and Lewis. 9000-12,000

Provenance: Pitt collection.

Literature: Collecting Antique Bird Decoys and Duck Calls.

71



71. Outstanding sharply turned-head goldeneye drake decoy by Lem and Steve Ward. In XOC. Signed on the bottom with a poem.

6500-9500

Provenance: Pitt collection.

Literature: Collecting Antique Bird Decoys and Duck Calls.



71A

71A. Outstanding redhead drake by Lem and Steve Ward of Crisfield, MD. Signed "Lem and Steve" Ward Bros. 1966" on the bottom. The head is turned sharply to the right at nearly 90 degrees. Paint is in virtually mint condition. 6500-9500

Provenance: Pitt collection.

Literature: Collecting Antique Bird Decoys and Duck Calls.



72



72. Sharply turned-head redhead hen decoy by The Ward Brothers in XOC. Bottom signed "Shooting – Stool made by Steve and Lem, Ward Bro, 1966" in ink. There is a thin coat of sealer or wax on the original surface. 6500-9500
Provenance: Pitt collection.
Literature: Collecting Antique Bird Decoys and Duck Calls.



73. Turned-head brant decoy signed on the bottom "Made by Steve, Painted by Lem, Ward Bro's Crisfield, MD, 1967"

"Presented to our friends Mr. And Mrs. Amos Waterfield, Lem Ward, Steve Ward". In XOC, bill break will be re-set and glued professionally. Pictured on bottom page 85 Luckey and Lewis. 6500-9500
Provenance: Pitt collection.
Literature: Collecting Antique Bird Decoys and Duck Calls.



73





74

74. Wonderful turned head raised wing blue winged teal drake decoy in XOP signed "Lem Ward, Crisfield, MD, 1967" in ink on the bottom. Tight neck check. Pictured on the top of page 84 in the book by Luckey and Lewis.

6500-8500

Provenance: Pitt collection.

Literature: Collecting Antique Bird Decoys and Duck Calls.

75. Turned head shoveler drake decoy with glass eyes by Robert Havel with detailed raised wing and tail carving. In XOC. Signed "Bob Havel, 1973, Norfolk, NEB" on the bottom.

450-650

Provenance: Pitt collection.

76. Turned head redhead drake decoy by Robert Havel with raised wings and tail, and nicely textured paint. Signed "Bob Havel, 1977" on the bottom. In XOC.

Provenance: Pitt collection.

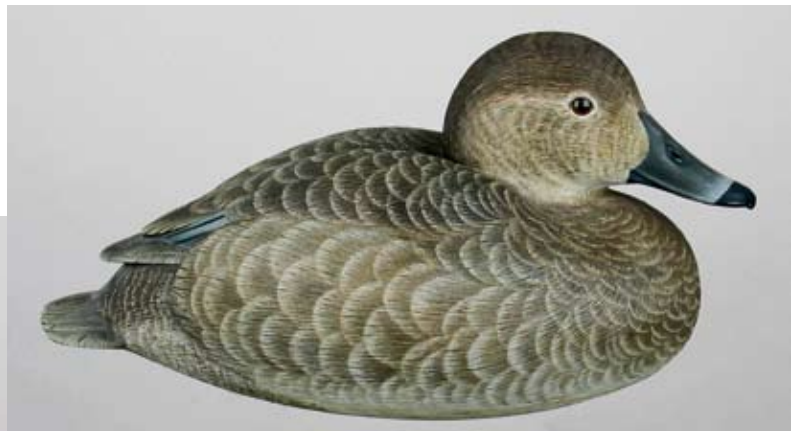


75

77. Sleepy turned head redhead hen decoy by Robert Havel with raised carved wings, fluted tail and glass eyes. In XOC. Mate to lot 76.

450-650

Provenance: Pitt collection.



77



76



78

78. Goldeneye drake decoy by Charlie Murphy, Concord, MA with a cork body and pine head, tail, keel and bottom board. In XOC with a tight age check in the underside of the bill. "C. Murphy" carved into the bottom. Murphy was the owner of Sneak Box Antiques in Concord, MA. 450-750
Provenance: Pitt collection.

79. Swimming bluebill drake decoy by Charlie Murphy, Concord, MA with a cork body and pine head, tail, keel and bottom board. XOC. "C. Murphy" and "82 III" carved into the bottom. Circular lead weight attached to the bottom with a screw through the center. Murphy was the owner of Sneak Box Antiques in Concord, MA. 400-650
Provenance: Pitt collection.

80. Hollow bufflehead drake decoy in XOC by an unknown maker. 450-550
Provenance: Pitt collection.

81. Decorative ruddy duck drake decoy in XOC with glass eyes. "RE" branded on bottom. 300-450
Provenance: Pitt collection.

82. Hollow bufflehead drake decoy with glass eyes, low head and a layered three-piece body. Nicely textured paint on the back. Inlet neck is missing a 1 x 1/4 inch section under the bill. Joe T. branded in the bottom. 250-450
Provenance: Pitt collection.



81

82



83

83. Hollow painted eye bluebill drake decoy from NJ attributed to Harry V. Shourds in old working paint with wear. Seam line visible. Struck by a few shot. 300-500
Provenance: Pitt collection.

84. Pair of Wildfowler wigeon. The hen is in XOC and has the original keel and circular Point Pleasant Factory brand on the bottom. Light wear to the edges of the bill and tail. The wigeon drake decoy is in XOC with the original keel and the circular Point Pleasant Factory brand on the bottom. Minor flaking on the bill and the tail edges. Pictured on the bottom shelf on page 475 in the Luckey and Lewis book. 450-650
Provenance: Pitt collection.
Literature: Collecting Antique Bird Decoys and Duck Calls.



84PR (Hen)

84PR (Drake)



79



80

85PR (Hen)



85PR (Drake)



86



85. **Pair of Wildfowler canvasback.** The hollow turned head canvasback hen is in XOC and has glass eyes and "A.J.B." stamped into the bottom. The hollow canvasback drake has glass eyes and a turned head in XOC with original keel. A few minor surface rubs. Pictured on the bottom of page 475 in the book by Luckey and Lewis. 450-550

Provenance: Pitt collection.

Literature: Collecting Antique Bird Decoys and Duck Calls.

86. **Hollow Wildfowler Factory Canada goose decoy with glass eyes and the original keel.** XOC. Made of pine or cedar. Some staining along lower edges from a sealer. Lead weight on the keel. It is the decoy in the middle on the top of a hutch on page 479 in Luckey and Lewis. 300-500

Provenance: Pitt collection.

Literature: Collecting Antique Bird Decoys and Duck Calls.

87. **Wildfowler Factory magnum balsa mallard drake decoy with glass eyes and the original keel in XOC.** A few minor surface imperfections. This is the decoy pictured on the top right of page 479 in Luckey and Lewis. 300-500

Provenance: Pitt collection.

Literature: Collecting Antique Bird Decoys and Duck Calls.

87



88



89



88. **Wildfowler Factory light pine magnum mallard hen decoy with glass eyes and the original keel in XOC with a few rubs and light wear the edges of the tail and bill.** A seam on the right side is visible from when the bird was made. 300-450

Provenance: Pitt collection.

Literature: Collecting Antique Bird Decoys and Duck Calls.

89. **Hollow Wildfowler Factory "Shourds" model Atlantic brant decoy with an inlet weight and glass eyes.** In XOC with minor rubs. "FSM" branded on the bottom. Circular Point Pleasant Factory brand. Pictured on the bottom of page 232 in the book by Luckey and Lewis. 300-500

Provenance: Pitt collection.

Literature: Collecting Antique Bird Decoys and Duck Calls

90. **Hollow NJ brant decoy ca 1910 with rectangular weight and no eyes.** Three narrow checks in the head. Some OP with mostly old in use repaint. Possibly by one of the Parkers. 400-600

Provenance: Pitt collection.

91. **Hollow black duck decoy with glass eyes, carved wing and tail detail, in unused condition.** Signed "Clarence Fennimore, Bordentown, NJ, 1965". 300-500

90



91



92



93



94

92. Hollow fresh water coot decoy by Charlie Wilbur, Island Heights, NJ in XOC. Branded on the bottom CW. 200-400

93. Madison Mitchell, Havre de Grace, MD turned head bluebill drake decoy with painted eyes. Weight removed, Stringing eye intact. Tight check from front of the neck to the back about 2 in to 3 in. Few nail holes in the bottom. XOC. Provenance: Pitt collection. 400-600

94. Madison Mitchell, Havre de Grace, MD canvasback hen decoy with painted eyes, in XOC. Weight removed, tight age check under the tail. 400-600 Provenance: Pitt collection.

95. Extremely rare pair of miniature night herons by George Boyd, Seabrook, NH in OP with delicate carved "feathers" on the males head. Tags on the bottom of the bases read, Male "25. Night Heron", Female "26. Night Heron" also identified in pencil under the tags. 10,000-14,000

96. Rare miniature godwit plover by George Boyd, Seabrook, NH, in XOC with a delicate bill and rectangular wooden base. Tag on the bottom reads "27. Godwit Plover" also identified in pencil along side the tag. The very tip of the bill has been professionally restored by Ken DeLong. 4500-6500

97. Rare miniature upland plover by George Boyd, Seabrook, NH. In XOC with a few lines of crazing on the back. Identified "Upland Plover" in pencil on the bottom of the base. 4500-6500

98. RARE early miniature passenger pigeon on a tall two-piece base by George Boyd, Seabrook, NH. In XOC. 4500-6500



95PR

IMPORTANT GROUP OF MINIATURE BIRD CARVINGS BY GEORGE BOYD OF SEABROOK NEW HAMPSHIRE MADE IN THE EARLY 1900'S.

96-97-98





99-100PR



101PR



102PR

99. **Miniature turned head Canada goose by George Boyd, Seabrook, NH in XOC with a restoration to a small bill chip by Ken DeLong.** Typical crazing to the surface. "Canada goose" on the bottom in pencil. 2500-3500

100. **Pair of miniature mallards with turned heads and typical crazing on the surface.** Drake has a minor dent on the left edge of the bill. Cleaned by Ken DeLong. 5500-7500

101. **Miniature pair of American mergansers with turned heads in XOC.** Cleaning and touch up to a tiny area on side of the drake. Tags on the bottoms read "American Merganser Male" and "American Merganser, Female" respectively. 6000-9000

102. **Rare pair of miniature goldeneye.** In XOC. Hen has a slightly turned head and "Goldeneye" written in pencil on the bottom. 5500-7500

103. **Extremely rare miniature old squaw drake by Joseph Lincoln in XOC.** Ink stamp on the bottom reads "Joe Lincoln, Accord, Massachusetts" and "Old Squaw" is written in pencil. This exact miniature is pictured in the 1966-67 issue of Decoy Collectors Guide by Hal Sorenson on page 26. It is near the top shelf on the right facing left. The six-page piece is titled "THE DECOY LEGACY of JOSEPH W. LINCOLN". 3500-5500

104. **Extremely rare miniature black duck by Joseph Lincoln in XOC.** Ink stamp on the bottom reads "Joe Lincoln, Accord, Massachusetts" and "Black Duck" is written in pencil. This is the exact miniature pictured on a lower shelf in the same article mentioned above in DCG. 3000-5000

IMPORTANT MINIATURES BY JOSEPH WHITING LINCOLN



103-104

105-106



107-108-109

105. Extremely rare miniature white wing scoter drake by Joseph Lincoln in XOC. No stamp. Cleaned professionally by Ken DeLong. This is the exact miniature facing right on the bottom left of page 26 in DCG 1966-67. 3000-5000

106. Extremely rare miniature surf scoter drake by Joseph Lincoln in XOC. No stamp. Cleaned professionally by Ken DeLong. This is the exact miniature facing right on the bottom of page 26 in Decoy Collectors Guide. 3000-5000

107. Beautiful double mount on driftwood of Canada geese by Harold Gibbs in XOC. "HNG", "Canada Geese" and "1956" on the bottom in pencil. 600-900

108. Regal miniature whistling swan by Harold Gibbs in XOC with "HNG", "Whistling Swan" and "1957" in pencil on the bottom of the base. 450-650

109. Colorful miniature cock pheasant by Harold Gibbs. In XOC with tiny dings at the tip of the tail and the tip of the crest. "HNG", "Pheasant" and "57" in pencil on the bottom of the base. 500-700

110. Rare turned-head full-bodied wood duck drake decoy with carved crest and glass eyes by A. E. Crowell, East Harwich, MA. Two rectangular impressed brands on the bottom. Identified in ink "Wood Duck, Male" and dated "1935". In virtually mint condition with a small surface blemish under the tail. 18,000-22,000



110



111

111. Early working turned head black duck decoy with glass eyes by A. E. Crowell, East Harwich, MA. In XOC with a deeply impressed oval brand on the bottom. Rigged with a sheet lead weight and "AIJ" written in ink on the leather stringing strap. Light wear, tiny knot hole under the bill, small amount of filler visible in an indentation above the right eye and a few dents and crazing along the grain lines. 3500-5500
Provenance: Howes collection.



112

112. Rare early oversized working black duck decoy with glass eyes by A. E. Crowell, East Harwich, MA. In original second coat of paint by Elmer Crowell. Approximately 20 inches long with a deeply impressed oval brand on the bottom. There are a few areas of rough wood and surface scratches. Numerous "Donald B. Howes" ink stamps on the bottom. 2500-3500
Provenance: Howes collection.

112A. Pair of turned-head glass eye American goldeneye decoys by A. E. Crowell, East Harwich, MA. These are a special order of slightly undersized carvings in fine original slightly used condition with the impressed rectangular brand on the bottoms. Hen has wear to the paint on the head and along the sides with the primer showing in places and wear on the edges of the bill and tail. Edge of the brand is visible under the flat lead weight. Drake has light wear to the sides of the head and two small spots on the back with the weight removed. Both have "Donald B. Howes Antiques" ink stamps on the bottom. 8000-12,000
Provenance: Howes collection.

112A PR





113

113. Imaginative reaching goldeneye drake decoy by noted Wisconsin folk artist Lou Schifferl. In XOC with intentional very light surface wear. Carved wings, tail and nice puffy cheeks. Neck seam is visible. One of his important earlier and folk art pieces. Schifferl is one of America's most important illustrators and folk carvers. 800-1200

115



116. Outstanding life size quail with glass eyes, a turned head, and carved wings on a driftwood base signed "J. Lapham, Dennisport, Mass, Quail" on the bottom of the base. One of his best carvings in XOC.

Provenance: Howes collection. 800-1200

117. Superb life size quail with glass eyes and nicely carved wing and tail detail by craftsman John Mackenzie of Brewster, Cape Cod. No longer carving birds, Mackenzie turned his talents many years ago to the making of fine instruments. 800-1200

Provenance: Howes collection.

116-117

114. Outstanding life size dove decoy in XOC with glass eyes and a turned head by noted folk artist Lou Schifferl. Carved wing and tail detail. Stick hole in the bottom. 400-600

115. Miniature mallard drake flyer with an applied wing and a single screw extending from the back for mounting on the wall by "A. E. Crowell and Son". Impressed rectangular brand, and signed "AB/ DBH" and "C.S.C" on the back in ink. 3500-5500

Provenance: Howes collection.





118(2)



119-120-121



122-123-124

118. Lot of two mini mallard carvings in XOC. Both have necks glued in place. Attributed to Arthur or Jess Blackstone. Arthur and his son Jess are well known to collectors of fine bird miniatures.

300-500

Provenance: Arthur Gould collection.

119. Miniature turned-head white throat sparrow in XOC by Jess Blackstone, Concord, NH. "White Throat Sparrow," typical "JB" signature and "108" in ink on the bottom of the base.

1200-1500

Provenance: Doherty collection.

120. Miniature robin in XOC by Jess Blackstone, Concord, NH. "Robin", typical "JB" signature and "195" in ink on the bottom of the base.

1200-1500

Provenance: Doherty collection.

121. Miniature rose-breasted grosbeak in XOC by Jess Blackstone, Concord, NH. "Rose Breasted Grosbeak", typical "JB" signature and "83" written in ink on the bottom of the base.

1200-1500

Provenance: Doherty collection.

122. Miniature Blackburnian warbler in XOC by Jess Blackstone, NH. "Blackburnian Warbler", typical "JB" signature and "72" in ink on the bottom of the base.

1200-1500

Provenance: Doherty collection.

123. Miniature goldfinch in XOC by Jess Blackstone, Concord, NH. "Goldfinch" typical "JB" signature and "389" in ink on the bottom of the base.

1200-1500

Provenance: Doherty collection.

124. Miniature golden crowned kinglet in XOC by Jess Blackstone, NH. "Golden Crowned Kinglet", "JB" signature and "8" in ink on the bottom of the base.

1200-1500

125. Miniature mallard drake in XOC on a branch base with "R. G. Jansson, Cape Cod" inside a rectangular impressed brand on the bottom of the base.

200-400

126. Life size chickadee in XOC on a branch base with "R. G. Jansson, Cape Cod" inside a rectangular impressed brand on the bottom of the base.

200-400

125-126





127-128-129

127. Miniature common tern in fine original paint with long tail and carved wings on circular painted wooden base signed "J. Lapham, Dennisport, Mass, Common Tern" along with a "Donald B. Howes" ink stamp on the bottom of the base. Bill crack and two tail feather breaks glued together. 600-900
Provenance: Howes collection.



130-131

128. Half size (9 in long) common tern with split tail and carved wing outlines. In XOC signed "Common Tern, J. Lapham, Dennisport, Mass" on the bottom of the base."Donald B. Howes" ink stamp also on the bottom. 750-950

132. Choice example of an early miniature gadwall drake with a turned head and carved wings on a branch base signed "J. Lapham, Dennisport, Mass, Gadwall" along with a "Donald B. Howes" ink stamp on the bottom of the base. In XOC. 750-950

129. Miniature common tern with carved wings on a driftwood base signed "J. Lapham, Dennisport, Mass, Common Tern" on the bottom of the base. In XOC.
Provenance: Howes collection. 750-950

133. Choice example of an early miniature baldpate hen with a turned head and carved wings on a branch base signed "J. Lapham, Dennisport, Mass, Baldpate Hen" along with a "Donald B. Howes" ink stamp on the bottom of the base. In XOC. 750-950

130. Early miniature goldeneye drake with a turned head and carved wings on a branch base signed J. Lapham, Dennisport, Mass, Whistler" along with a "Donald B. Howes" ink stamp on the bottom of the base. In XOC. Exceptional quality. 750-950

134. Life size ruffed grouse with tack eyes by Alfred Gardner in XOC. Ding to the bill tip and a narrow check in the breast. Two oval ink stamps on the bottom of the base read "Alfred Gardner, Accord, Mass." 200-400



134

131. Early miniature old squaw drake with a turned head and carved wings on a driftwood base signed "J. Lapham, Dennisport, Mass, Old Squaw" along with a "Donald B. Howes" ink stamp on the bottom of the base. Neck seam visible. In XOC. 750-950

132-133





135

136



135. Pintail drake by Laurent Verdin (1909-1991) of Pointe au chien. In XOC.

800-1200

136. Greenwing teal hen by George Frederick Jr. (1907-1977) in XOC. Frederick was from Davant, LA. Outstanding teal decoy.

1500-2500

137. Bluewing teal drake by Xavier Bourg (1901-1984) from Larose, LA. Made with a sharply turned head. In fine original paint with tack eyes and typical notched-wing edges. Tight neck check. The old original selling price of \$1.00 is written in ink on the bottom. Never rigged.

500-1000

138. Ringbill drake by Xavier Bourg. In excellent original condition in all respects. Head sharply turned to the left. One of his finest carvings. Painted eyes.

750-950

138



137



139



140

140A



140B

139. Turned head redhead drake with glass eyes signed on the bottom by B. Chauvin, Larose, LA. In XOC with surface dirt and a few rubs. Flat bottom. 250-450

140. Turned head ringbill drake with glass eyes signed on the bottom by B. Chauvin, Larose, LA. In XOC with surface dirt and a few rubs. Rounded bottom. 250-450

140A. Turned head ringbill drake decoy with painted eyes and raised wing carving by Joseph Martin, Golden Meadow, LA. In XOC. This decoy was exhibit No 209 and bears the display tag on the bottom along with an ID tag and a metal Charley Frank collection tag #355. Struck by a few shot. 800-1000

141PR

140B. Pintail drake in excellent original paint. Structurally fine. Made in the LaFrance style. Not very old. 300-450

141. Pair of European rock dove decoys in good OP with painted eyes nice carved outline wing details and broad flat tails. One has an age check on the right side of the body and a few rubs and scrapes and the other has a few areas of paint loss to the primer. Interesting form. 100-200



INFORMATION REGARDING THE SHOREBIRD DECOY BELOW,
LOT 142, THE MAKER, AND IT'S ORIGIN.

John Thomas Wilson (1863-1940) was born in England and immigrated to the United States with his wife sometime in the 1880's. He began carving decoys for his own use on the Ipswich marshes in the 1880's. A machinist by trade, he also guided and hunted for the market. He may have made decoys commercially but at this point we have no information that would support this. His shorebirds are very much like those attributed in the past to Fred Nichols of Lynn, Massachusetts. We cannot be certain, but we think this early hollow plover may be one of Tom's earliest. It was found on the north shore of Massachusetts by Donald Howes many years ago and there are similarities to the known Wilson shorebirds such as the hollow plover pictured in color plate 5 on page 54 in "Decoys of the Atlantic Flyway" by Dr. George Ross Starr. In our humble opinion, whether by Tom or not, this is the finest hollow Massachusetts plover decoy ever made.



142. Extremely rare hollow carved to a thin shell two-piece horizontally split Massachusetts black-bellied plover decoy, circa late 1800's, in winter plumage attributed to Thomas Wilson of Ipswich, MA. In excellent original condition in all regards. Glass eyes. Very light surface wear,

mellow patina. Struck by a few shot, light wear. One of the finest American shorebird decoys ever made. Found on the North Shore of Massachusetts in the mid 1900's by the late Donald B. Howes.

Provenance: Howes collection.

45,000-75,000



143

143. Rare split tail, carved eye, black capped tern decoy in great old paint with the original bill. Carved wing outlines. Square stick hole and "Hen Ellison" "1851", number hard to read, and "Freeport" on the bottom in ink and "H.E." carved into the bottom below the stick hole. Outstanding example of a LI tern decoy. 8000-12,000

144. Rare glass eye curlew ca late 1800's from Long Island, NY in mostly OP with very old in use t/u on the breast. Crazying with paint loss on back and left side of the breast. Original bill with a tiny sliver missing from under the tip. One eye missing. From the "Thorne" rig. 5000-7500



144

145. Late 1800's large glass eye black bellied plover in Spring plumage from Long Island, NY. Nicely carved wing outlines. Open check in the bottom from the mid breast to a few inches below the stick hole. Struck by shot. Very old in use repaint with original paint. From the "Thorne" rig. Note the similarity between both Dilley and Verity shorebird decoys. 5000-7500

145A. Two-piece Nantucket golden plover ca 1880. Probably by the Coffin family. In as found condition with excellent original paint under sealer which covers about 3/4 of the surface. Original tack eyes and bill. Tight lower neck check. Great golden plover paint. 1500-2500

145A



145





145B

145B. Running lesser yellowlegs ca 1900. Probably of Massachusetts origin. In very nice original paint and a pleasing lightly worn surface. All original from bill tip to the tail. Eyes were probably painted but that area is worn.

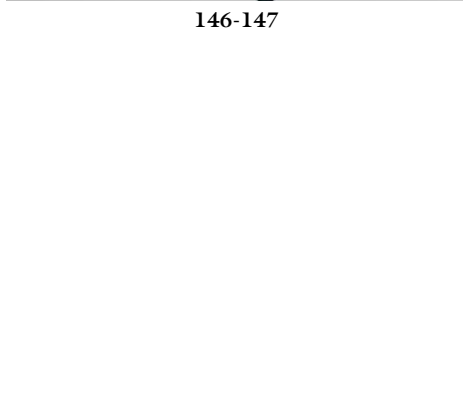
800-1200

145C. Golden plover from Nantucket ca 1890-1900 in fine original paint that would brighten with finish feeder. In as found condition. Large dark glass eyes. Thick bodied, not a flattie, but flat sided. Lots of great paint and gold dots.

1200-1800



146-147



145D



145D. Two-piece split-tail flattie plover from Hingham, MA. ca 1890-1910. In winter plumage with a short reversed nail bill. Pin-holes drilled for eyes.

Excellent original condition and paint.

250-450

146. One piece robin snipe ca late 1800's from Long Island, NY, in very old gunning paint with crackling and some chipping on the sides and lower back. Struck by shot, old tail chip. From the Thorne Rig.

2500-4500

147. One piece robin snipe ca late 1800's from Long Island, NY, in very old gunning paint with crackling and some chipping on the sides and lower back. Struck by shot, few slivers of wood from the bottom near the stick hole. From the Thorne Rig.

2500-4500

148. Drop-tail robin snipe decoy by Charles Clark from Chincoteague, ca late 1800's with painted eyes and good old gunning paint with wear and crazing. Small area of dry rot on the right side of the body. Struck by shot.

3500-5500

148A. One-piece robin curlew decoy, ca late 1800's from Long Island, NY, curved nail bill. Very old gunning paint with heavy crazing and shot scars. From the Thorne Rig from Amityville, LI.

2500-4500

148-148A





149



149. **Extremely rare Massachusetts peep decoy ca 1860-1880.** Hollowed from the bottom to a thin shell. In virtually mint condition with the original bill. Very unusual blue glass bead eyes are from the Sandwich Glass Factory on Cape Cod. Wonderful mellow surface with a spectacular paint design.

Attributed to the Chipman Family from Sandwich, MA. Found in a cellar in Eastham, MA. in the 1900's by Donald Howes. Absolutely the finest peep decoy we have ever seen. Provenance: Howes collection.

15,000-25,000



150

150. **EXQUISITE** Massachusetts's yellowlegs decoy ca 1860-1880 that is hollowed from the bottom to a thin shell. In excellent original condition with the original bill. Head is sharply turned 90 degrees to the right. Very unusual deep green glass bead eyes are from the Sandwich Glass Factory on Cape Cod. Wonderful mellow surface and delicate paint design. Attributed to the Chipman Family from Sandwich, MA. Found in Eastham, MA. in the mid 1900's by Donald Howes in a basket with peep and plover decoys by the same maker. Only a handful of these classic decoys exist in any condition. 15,000-25,000

Provenance: Howes collection.





151-152



153-154

151. Black bellied plover decoy with glass eyes by Al White, Sandwich, MA well known for his gun engraving talents. In XOC. Made in three vertically laminated pieces of wood. Impressed "White" brand on the bottom beneath the stick hole. 300-500

152. Feeding yellowlegs decoy ca 1960's with glass eyes by Al White, Sandwich, MA well known for his gun engraving talents. In XOC. Made in three vertically laminated pieces of wood. Impressed "White" brand on the bottom beneath the stick hole. 300-500

155



153. Sleeping split-tail yellowlegs decoy by noted NJ carver Bruce Bieber. In XOC. Drip of varnish on the head. 150-250

154. H. V. Shourds III feeding yellowlegs decoy in OP. Some crackling of the paint on the surface of the breast due to sap seepage. Glass eyes. 150-250

155. Wildfowler Canada goose in XOC in all respects. Pictured on the bottom of page 479 in Luckey and Lewis book. It is the decoy on the top left of the shelf. Provenance: Pitt collection. 300-500 Literature: Collecting Antique Duck Decoys and Duck Calls.



156. Lot of three Wildfowlers. A balsa body mallard decoy in good OP with glass eyes, original keel and light to average wear. Small sliver from the top of the tail. No brand. A balsa body mallard decoy in good OP with glass eyes, original keel and light to average wear. Few dents on the front and top of the body. Bottom has been painted green. No brand. Wildfowler balsa body mallard decoy in good OP with "AEB" branded and \$3.50 written in crayon on the bottom. Glass eyes, original keel and light to average wear. Head loose with cracked filler. No brand. Dents and scrapes narrow checks. These are early decoys from Old Saybrook. 400-600

156(3)



157



160PR



158



161PR

157. **Wildfowler green wing teal drake decoy in XOC.** Mounted on an oval maple base with a lamp fitting placed through the center of the back.
200-400
Provenance: Howes collection.

158. **Rare Wildfowler white-fronted goose "Specklebellie" decoy, with glass eyes in XOC.** Branded with the circular impressed Point Pleasant, NJ mark on the bottom. Original keel. Surface of the lower sides and tail have sealer drips visible. See top of page 232 in the Luckey and Lewis book for this exact decoy.
500-1000
Provenance: Pitt collection.
Literature: Collecting Antique Bird Decoys and Duck Calls.

159. **Lot of 2.** An early Wildfowler black duck with cork body, pine head, and bottom board in OP with wear and original keel. Few thin age checks on the head. No brand. Large cork body Wildfowler black duck in fair condition.
200-300

159(2)



160. **Pair of Wildfowler (Barnegat Bay model) green wing teal decoys with glass eyes in XOC.** Hen has minor rubs to top of the head and base of the neck. Drake has tiny wear on the front of the bill and a knot burn on the body near the neck. Both are weighted and ready for rigging. No brand or mark. See page 233 in Luckey and Lewis book. This is one of the 2 pairs shown.
300-500
Provenance: Pitt collection.
Literature: Collecting Antique Bird Decoys and Duck Calls.

161. **Early pair of balsa Wildfowler bluebills with original keels.** Good OP, no brand, glass eyes that are cracked. Wear along edges of the body and the bill and tail.
200-300

162. **Early pair of balsa Wildfowler Factory bluebill decoys in good OP with light wear.** Glass eyes (cracked and one missing on the hen) and original keels. No brand. Hen has a narrow check on the back.
200-300

162PR





162A



165PR



163
164



166

162A. Wildfowler turned head bluebill drake decoy in XOC. Point Pleasant, NY. Signed "Glenn O'Connell, 1985".
Provenance: Pitt collection. 200-300

163. Herter green wing teal drake. XOC. 1893 J. Davis in pencil on the bottom. 125-175

164. Herter blue wing teal drake. J. Davis in pencil on the bottom. XOC. 125-175

165. Pair of Tux Dux Factory, Waseca, MN, bluebill decoys in good OP with light wear. Cork bodies, pine heads, bottom boards, weighted. Wear to wood on head. 200-400

166. Turned head preening bluebill drake decoy with glass eyes by the Animal Trap Co., Pascagoula, MS with the circular ink stamp on the bottom. In XOC. 200-400
Provenance: Pitt collection.

167. Pair of turned head, glass eye Animal Trap Co. Pascagoula, Miss. Blue wing teal in XOC with glass eyes and the typical circular ink stamp on the bottoms. In unused, unrigged, condition. 200-400

167PR-168



168. Bluebill hen by Ralph Malpage, London, Ontario, Canada. In fine OP with possible t/u to an area near the tail. Turned head and glass eyes. 150-250

169. Lot of two kapok stuffed canvas decoys. A bluebill drake with stuffing settled to the body and a tip up black duck with no head. 100-200

170. Rare swimming pintail drake decoy ca 1940's by Downeast Sportcraft, Portland, ME. In XOC with a thin coat of finish feeder on the body. Outstanding example. This appears to be the decoy pictured on the bottom of page 485 in the Luckey and Lewis book. 300-500
Provenance: Pitt collection.

Literature: Collecting Antique Bird Decoys and Duck Calls.



169(2)

170





171PR



171A

171. Rare pair of goldeneye decoys by Downeast Sportcraft, Portland Maine, ca 1940's. Hen has a narrow check from the breast to the tail on the bottom with knots and hairline checks near them on the body. Drake has "DG-2" tag on the bottom and a narrow check on top from behind the neck to just before the tail. Both in XOC.

300-500

Provenance: Pitt collection.

171A. Swimming black duck with glass eyes by Downeast Sportcraft Co. Portland, ME. In XOC. Nicely carved wing and tail detail. Few drips of paint and an original patch on the right side of the body in the making.

200-300

Provenance: Pitt collection.

172. Mallard drake by Animal Trap Co. Pascagoula, MS. Wooden body with a detachable plastic head. OP with wear on the left side and the high spots. Circular ink brand on the bottom.

100-200

Provenance: Pitt collection.

173. Victor Factory bluebill drake with glass eyes in XOC. Neck seam slightly open. Made with two hollow areas on the bottom, unriggered and unused.

100-200

Provenance: Pitt collection.

174. Bluebill hen decoy by Animal Trap Co, Pascagoula, MS with wooden head. In good OP with light wear to the sides of the body, tip and edge of the bill and top of the head. Neck seam is open slightly. Circular ink brand on the bottom.

100-200

Provenance:
Pitt collection.



176



177



172
173



174
175

175. Bluebill drake by Animal Trap Co. Wooden body with a detachable plastic head. OP with wear on the high areas. Circular ink brand on bottom.

100-200

Provenance: Pitt collection.

176. Unknown factory bluebill drake with glass eyes. Wear to the end of the bill neck slightly loose from the body. In XOC with a few minor dents and rubs.

100-200

Provenance: Pitt collection.

177. Oversized Factory bluebill hen keel removed. Glass eyes textured body. In XOC with a few knots on the back. Mate to lot 77 sold 3/17/06.

150-200

Provenance: Pitt collection.

178. Oversized D-4 model animal Trap Co Bluebill drake decoy in XOC.

150-200

Provenance: Pitt collection.

179. Working crow decoy with glass eyes. Break in front of the bill repaired. Mounting screws on the bottom removed. Possibly made from a mold.

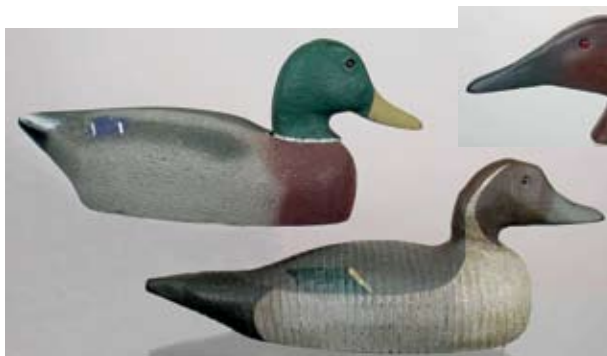
25-50

Provenance: Pitt collection.

178
179



180
181

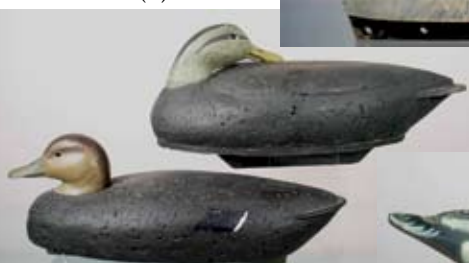


183(2)

185
186



184(2)



187

182(3)

188



180. Herter Factory Waseca, MN, mallard drake decoy, glass eyes. In XOC. 150-250
Provenance: Pitt collection.

181. Victor Decoy Co. glass eye pintail drake in near unused condition. Ring rigging eye attached and weight removed. This may be the example pictured on the bottom of page 484 in the Luckey and Lewis book. 200-300
Provenance: Pitt collection.
Literature: Collecting Antique Bird Decoys and Duck Calls.

182. Lot of three Factory decoys. One Animal Trap Co. Bluebill drake with glass eyes and the typical turning rings on the body and head. The head dowel is broken but the pieces have been reglued. Two unused Victor black duck decoys with glass eyes (one missing), weights removed and the impressed "Victor" brand on the bottoms. 250-450

183. Lot of two canvasback heads by Jack Sweet, Decoys Unlimited, Erie, PA. In XOC, possibly removed from bookend mounts. Glass eyes. Few tiny surface dents. 100-200

184. Lot of two cork and pine black duck decoys. An oversized glass eyed working black duck sleeper with a cork body and a pine head and tail. "Baker" carved on the keel, OP, and a competition model cork body black duck by Anthony Licciardello, Ocean City, MD, with a turned head, glass eyes, pine head, tail and keel. In XOC. 150-250

185. Small 1/3 size Canada goose made in sections of wood and mounted on two legs and a rectangular black wooden base. Paint appears to be OP with distressing. 150-250

186. Balsa body Canada goose decoy by the Herter Factory, Waseca, MN. Made in horizontal layers. Pine head, neck and bottom board. Good OP with neck joint reglued and the paint t/u. 150-250

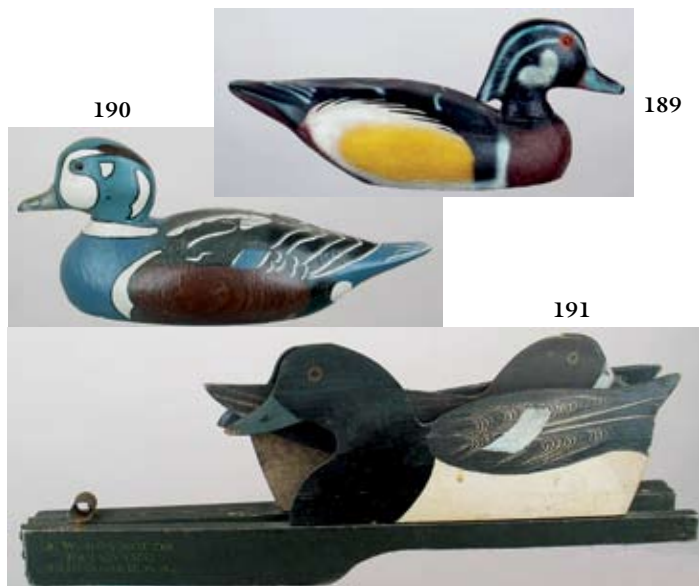
187. Herter Factory widgeon drake decoy in XOC. Bill break glued tight. 100-200
Provenance: Pitt collection.

188. Herter old squaw drake decoy in XOC with a long plastic tail. 150-250
Provenance: Pitt collection.

189. Herters Factory Wood duck drake decoy in XOC turned head glass eyes. 150-250
Provenance: Pitt collection.

190. Herters Harlequin drake XOC patent date on bottom 1893 Herters Inc. 150-250
Provenance: Pitt collection.

191. Folding "Reynolds, Chicago, IL patented" bluebills. Set of three in XOC with slight wear to the edges. 300-500
Provenance: Pitt collection.





192



193PR



194

196
197

195



192. Flapomatic mallard drake decoy with a framed copy of the advertising used to sell the decoy. Made of plastic and metal with movable wings that connect to wire and string. In XOC.

200-400

Provenance: Pitt collection.

193. Pair of Reynolds folding cloth mallards. J. W. Reynolds, Forest Park IL. Patent printed under the bill. Wear to canvas in places. In very good condition.

200-400

Provenance: Pitt collection.

194. Reynolds canvas stuffed mallard drake decoy with the original shipping box. Decoy near perfect condition. Box in good condition.

200-300

195. Lot of corn decoys, three carved wood, two whole, and one half, three paper mache, two rubber mallard decoys, with ten weight metal rings in a canvas bag. All in good condition except the ducks which have a slightly sticky bottom.

200-300

Provenance: Pitt collection.

196. Mason Factory hollow Challenge Grade bluebill hen decoy with glass eyes with OP on the body head and face. Over paint removed from white areas of the body with in painting. Check on the right side from the breast to the tail.

Provenance: Pitt collection.



198

199
200

197. Mason Factory Challenge Grade goldeneye drake decoy mostly OP with over paint removed. Narrow check in top of breast, under bottom, and ending near the tail.

Provenance: Pitt collection.



300-500

750-1250

198. Mason Factory Challenge Grade blue winged teal drake in excellent restored paint. Neck has been broken and reattached before restoration.

300-500

Provenance: Pitt collection.

199. RARE Mason Factory Back Bay Model canvasback drake decoy that has been cleaned and had some over paint removed. In use t/u, old repair to the edge of the bill under the tip, neck filler is missing, two thin neck checks with glue, three thin checks under the tail. Felt attached to the bottom. Struck by a few shot.

500-1000

Provenance: Pitt collection.

200. Mason or Pratt Factory Premier Grade canvasback drake decoy with glass eyes and two circular inlet weights in the bottom. Heavily repainted veteran with check from the breast to the tail and several shot holes.

Provenance: Pitt collection.

300-500



201



204

202



205



207
208



203PR

201. **Mason Factory Premier Grade green wing teal drake decoy in excellent restored condition.** Numerous letters carved into the bottom. Restored in the original manner. Hairline check 5 inches or 6 inches long on the back.

300-500

Provenance: Pitt collection.

202. **Wildfowler Factory canvasback hen decoy with glass eyes, probably from Old Saybrook.** Nicely repainted.

100-150

Provenance: Pitt collection.

203. **Pair of turned head Barnegat Bay Decoy Co. green wing teal decoys.** "DSC" punch stamped into and an oval "Barnegat Bay Decoy Co." ink stamp on the unpainted bottoms. Similar to Wildfowler decoys.

200-300

Provenance: Pitt collection.

206



204. **Wildfowler bluebill drake "Shourds model" by "Charles R. Birdsall, Point Pleasant, NJ".** Two Birdsall ink stamps on the bottom. In XOC. Painted by "Bill Kien" under the bill. Pictured on the top shelf on page 475 in the Luckey and Lewis book.

250-450

Provenance: Pitt collection.

Literature: Collecting Antique Duck Decoys and duck calls.

205. **Tucked head mallard hen decoy with glass eyes.** In XOC, unused. Illegible inscription on the unpainted bottom.

200-400

206. **OUTSTANDING working Swan ca 1950's by Paul Gibson, Havre de Grace, MD.** In XOC with a thin check in the body and a thin check along the seam line in the back of the neck. A large swinging pendulum weight is attached to the bottom.

2500-4500

207. **Solid body canvasback drake decoy with painted eyes and original weight, signed on the bottom "R. Madison Mitchell, Havre de Grace, MD".** In XOC.

300-500

208. **Solid body goldeneye drake decoy with painted eyes and original weight signed "R. Madison Mitchell, Havre de Grace, MD".** XOC.

450-750

Provenance: Pitt collection.



208A



211



209



210



212



213

208A. **Madison Mitchell, Havre de Grace, MD goldeneye hen decoy with painted eyes.** Tight age check and a few stress cracks from head into the body. Checks on both sides of the neck. Weight and rigging intact. Signed in ink on the bottom "R. Madison Mitchell, Havre de Grace, MD. 1965" check on left side and right side. 350-550
Provenance: Pitt collection.

209. **Madison Mitchell, Havre de Grace, MD.** Turned head widgeon drake decoy with painted eyes. Signed "R. Madison Mitchell 1980" on the bottom with an electric pencil. Original weight and stringing eye attached along with a paper label "Widgeon Drake" on the bottom. XOC. 400-600
Provenance: Pitt collection.

210. **Turned head black duck decoy with painted eyes by Madison Mitchell, Havre de Grace, MD.** In XOC. Nicely scratch painted. Signed in electric pencil on the bottom "R. Madison Mitchell, Havre de Grace, MD" Hit by a couple of shot. 400-600

211. **Madison Mitchell, Havre de Grace, MD canvasback drake decoy with painted eyes and an "S" painted on bottom.** Weight and rigging eye removed. Nice patina, knot burned through paint on left side of the body. 300-450
Provenance: Pitt collection.

212. **Canvasback drake decoy probably made and painted in the Ward Brothers 1936 style or made by them and heavily restored.** Signed "Ward Brothers, Crisfield, MD, 1936" on the bottom. Bill repair distressed worn surface waxed or varnished. 300-450
Provenance: Pitt collection.

213. **NJ balsa brant decoy with glass eyes and an original keel in XOC.** Few surface nicks and dents on the body signed "Larry Ricca, Stockton, NJ. September, 1964" also "gifted, 12/03", on the bottom. 400-600
Provenance: Pitt collection.



214



215

214. Hollow black duck with glass eyes by Art Behmetluik. AB carved into the bottom. Fluted carved tail detail and nicely painted. In virtually mint condition.

300-450

Provenance: Pitt collection.

215. Hollow turned head glass eye pintail drake decoy by Cline McAlpine, Chicago, IL in XOC. "115" in tiny numbers painted under the tail, "RD" and "McAlpine '71" in ink along with "HJC" impressed brand on the bottom.

1200-1800

Provenance: Pitt collection.

216. Hollow glass eye green-wing teal drake by Cline McAlpine, Chicago, IL in XOC. "McAlpine, '72" in ink on the bottom in ink. Few minor rubs on the surface. Pictured on the top of page 116 in the book by Luckey and Lewis.

1200-1800

Provenance: Pitt collection.

Literature: Collecting Antique Bird Decoys and Duck Calls.

217. Pair of hollow pintails by Robert Weeks. The drake decoy has a split tail and glass eyes and is in XOC except for a tight neck check. Stamped "Weeks" on the bottom for maker Robert Weeks, Bureau, IL. The hen decoy is in XOC with glass eyes.

1200-1800

Provenance: Pitt collection.

218. Hollow Barrows goldeneye drake decoy in XOC with glass eyes by the late Virgil Lashbrook. Branded "V. Lashbrook, 914 Winter, Pekin, IL" on the bottom.

Provenance: Pitt collection.

500-1000

216



217PR

219. Hollow wood duck drake breast preener with glass eyes by the late Virgil Lashbrook. Branded "V. Lashbrook, 914 Winter, Pekin, ILL" on the bottom. In XOC. Pictured in two photos on page 114 in the Luckey and Lewis book.

Provenance: Pitt collection.

750-1250

Literature: Collecting Antique Bird Decoys and duck calls.



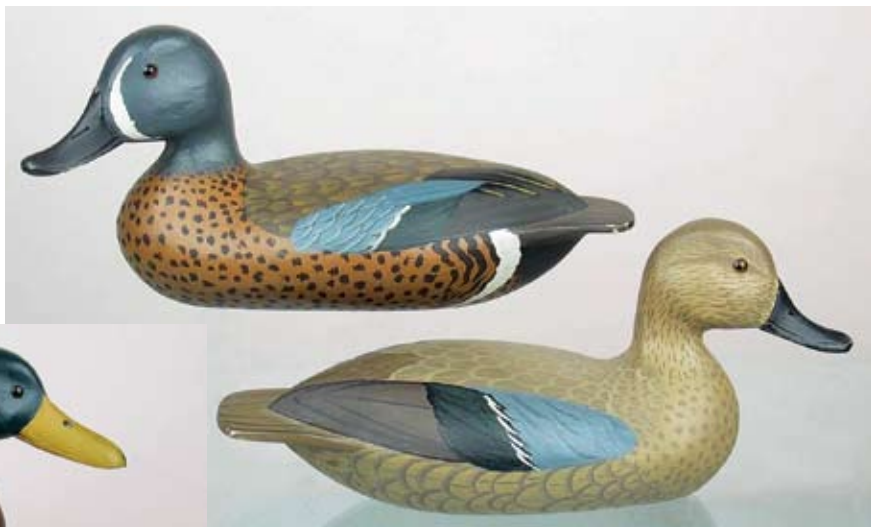
218



219

221PR

220PR



222. Hollow pair of turned head bufflehead decoys with split tails and glass eyes. XOC, stamped "Weeks on the bottom for maker Robert Weeks, Bureau, IL." Provenance: Pitt collection. 1200-1800

220. Fine pair of hollow mallards in XOC by Robert Weeks, Bureau, IL. Turned head hollow mallard drake decoy with a real feather tail. Stamped "Weeks" on the bottom. Preening hollow mallard hen decoy stamped "Weeks" on the bottom. 1200-1800 Provenance: Pitt collection.

221. Hollow pair of blue wing teal decoys with turned heads and glass eyes by Virgil Lashbrook in XOC. Branded "V. Lashbrook, 914 Winter, Pekin, IL." 1200-1800 Provenance: Pitt collection.

223. Hollow bluebill hen decoy with a turned head and glass eyes by Virgil Lashbrook in XOC. Branded "V. Lashbrook, 914 Winter, Pekin, IL." 500-1000 Provenance: Pitt collection.

224. Hollow canvasback drake decoy with a turned head and glass eyes by Virgil Lashbrook in XOC. Branded "V. Lashbrook, 914 Winter, Pekin, IL." Few minor rubs. Provenance: Pitt collection. 500-1000



223



222PR

224





225(3)



226



227
228-229

225. Lot of 3 black ducks by Steve Kordas, Bristol, RI. Cork bodies, pine heads, and bottom boards. In XOC with usual in use wear to the surface of the cork. One example has a tucked head, one a turned head sleeper and one a swimmer.

400-600

226. Shadow goose decoy approximately 3/4 inches thick with a three piece head and neck. In OP with overall light wear. Two drilled holes into the body possibly to mount on a wall.

200-400

227. Huge Canada goose decoy ca 1904's by James A. Whitney, Falmouth Foreside, ME. In XOC with a few minor rubs on the surface. Two-piece head and neck construction. Branded twice on the bottom. Never rigged. "J. A. Whitney" Whitney was well known in the Merrymeeting Bay area for his "Whitney Sneak Boats."

800-1200

228. Early mallard drake decoy with glass eyes used at the Monomoy Hunting Club in Chatham, MA. Check on bottom, two checks on the bill with glue repair. Very nice form. Writing on the bottom reads, "Monomoy Mass Hunting Club. Repainted in the 1950's" "\$65". Old in use paint.

300-500

229. Dodge Factory black duck decoy with most of the paint gone and the surfaced oiled and rubbed. Few long narrow body checks glass eyes, nice form.

200-400

230. Solid body white wing scoter decoy by Augustus A. Wilson, Portland, Maine. Very old working paint with wear and crazing. Knot on head and side of breast. Bill has old check. Tag on the bottom reads "Purchased from Calista Strong Antiques, 1979". Great form.

2000-3000



230

231PR

232PR



233



231. Pair of oversized eider decoys from the coast of Maine in nice old working paint with wonderful horseshoe weights. Drake has "HI" incised into the bottom, an age check on the back, and one near the center of the tail and two narrow age checks on the head. Hen has a 1/4 inch check on back and a few line age checks on the sides. 1200-1800

232. Pair of Skunk head scoters from Deer Isle, Maine, with inlet heads and painted eyes. Mostly OP with t/u to white areas on the heads and light overall wear. Few line age checks in the bodies. Approximately 18 inches long. Inlet lead weights. 900-1200

233. Crook-necked solid body Canada goose decoy from ME in OP with natural wood on the middle of the body and white paint on the tail and breast and black on the head and top of the tail. Numerous checks on the body. Horseshoe weight was removed. 300-500

234. Turned head Canada goose decoy probably from Nova Scotia. In good mostly OP with light wear to the edges of the tail and bill. Check with glue on the left side of the body. Few knots on the body. Head is made in two pieces seamed from top to bottom 2 in from the bill. Original rigging line. 300-500

235. Turtleback eider drake with inlet head and neck in old working paint from the coast of ME. Chip on underside of the bill has shortened the tip slightly. Tight age check in the body. Original scallop ring and rope tether attached to the bottom. Great form. 600-900

236. White wing scoter decoy in OP with repainted white wing flashes and surrounding black. "R. Lindsey Smallidge, Northeast Harbor, ME" on the bottom. Interesting leather and lead swing weight attached to the bottom board. 600-900

235



236

234





237

239



238



237. White wing scoter decoy in OP with t/u white wing flashes and surrounding black. R. Lindsey Smallidge, Northeast Harbor, ME" on the bottom. Weight removed.

600-900

238. Bold deep-bodied solid body canvasback drake from the Susquehanna River area in good old working paint with painted eyes and the original rigging. Narrow neck check, few line age checks in the body, struck by a few shot.

400-600

239. RARE early late 1800's cast iron sink box canvasback decoy in overall good condition with the tip of the bill broken. Heavy rigging wire through a hole in the tail. Branded "AD" on the head. No paint, light oxidation on surface.

1200-1800

241



243



240. Large solid body common scoter decoy from Deer Isle. (20 in bill to tail) Glass eyes Open check on the left side of the body and a check on the back of the neck. 400-600

241. Large goldeneye drake with a pegged inlet head attributed to Sam Toothacre, Brunswick, Maine. In nice old working paint with original paint. Struck by a few shot. Check from the back of the head to tail. Leather rigging thong, and a 3 in lead weight on the bottom. 500-1000

242. Solid body goldeneye drake decoy from coastal Maine with a crested inlet head and nice old paint. Struck by a few shot, Numerous narrow and line checks in the body and an inlet weight with "CC" carved into the wood on the Tag states "12-9-79" as the collection date. 250-350

243. Sturdy solid body goldeneye drake from Deer Isle, Maine with painted eyes and original weight in XOC. From the same rig as the pair of scoters, and by the same hand. (Lot 232). 400-600

244. Large solid body scoter or eider with no eyes from Maine with "AM" carved into the bottom. Good old working paint with numerous body check and surface shot scars. Approximately 17 inches long. 250-450

242



244





245



246



247
248



249
250

245. Oversized eider hen decoy (23 inches bill to tail) with a large peg attaching the head to the body. Good old working paint. Numerous age checks on the surface, sliver on the back with filler chipping. Struck by shot. Slivers of wood from the underside of the bill, and some moisture rot on the bottom. 400-600

246. Oversized solid body turned head eider drake decoy from Maine with an unusual angled inlet for the head and neck. Few checks in the neck, no eyes, and a few age checks in the body. Three circular inlet weights under the back end of the bottom. Good old working paint with original. 800-1200

247. Solid body paddle tail eider drake decoy from Nova Scotia in very old paint with working t/u. Two piece inlet head and neck. Numerous narrow line checks in the body. Weight removed. 250-450

248. Merganser drake with painted eyes by James A. Whitney, Falmouth Foreside, Maine in XOP and unused condition. There are a few filled checks visible on the body under the paint. Branded "J. A. Whitney" on the bottom. Never rigged. Whitney was well known in the Maine for his oversize decoys and his quality built "Whitney Sneak Boats". 750-1000

249. Unpainted turned head black duck with tack eyes and great form. Signed on the bottom "Carved by Gordon Mann, Rockland, Ma, 1953". Check in the bottom with original filler. Impressed design with "G. M." on the bottom. 500-1000

Provenance: Howes collection.

250. Unpainted redhead decoy with glass eyes and a turned head by H. Keyes Chadwick, Oak Bluffs, Martha's Vineyard, MA. Few line age checks in the body. Never weighted. "HKC 1950 A-1" written in pencil on the bottom. 500-1000

Provenance: Howes collection.



251

251. Rare racy red-breasted merganser hen decoy ca 1910 with carved eyes, carved wing outlines and a slightly turned head by Luther Nickerson, Cotuit, MA. In original paint with some with light wear and t/u to the white wing flashes. Bill has two tight checks. Some horsehair still remains in the back of the head. Weight removed. 7500-9500

252. Early round-bottomed goldeneye drake decoy by Luther Nickerson, Cotuit, MA. ca 1920. Small piece of wood out of the top of the head. Outstanding design with carved wings and wear to the original surface. Straight from the family rig. 700-900

253. Rare early red-breasted merganser drake with glass eyes by Luther Nickerson, Cotuit, MA, ca 1930s. In XO with very little wear. Wing carving and nicely detailed bill carving. Check in wood on the back filled when making the decoy is visible and the filler has cracked in places. Bottom is branded with Luther Nickerson's grandson's hot brand "HBN". Drakes are rare by this maker. Only 1 or 2 drakes for every dozen made. Nickerson was not one of the more prolific decoy makers. 4500-7500

252



253



254. Solid body bluebill drake decoy with a turned head, glass eyes and a paddle tail from the Chase Family Rig, Martha's Vineyard, MA. Good old working paint. Branded "S. Chase" on the bottom. 300-500

255. Solid body bluebill decoy with glass eyes and a paddle tail from the Chase Family Rig, Cape Cod. Made by an unknown Martha's Vineyard maker. Good old original paint with working touch-up. Couple of open knots. See photos in catalog and internet. Branded "S. Chase" on the bottom. 200-400

254



255



256



257

256. Solid body black duck decoy with a turned head, tack eyes and a paddle tail from the Chase Family Rig, Martha's Vineyard, MA. In very good original paint. Branded "S. Chase" on the bottom.

500-750

257. Scarce solid body bluebill drake decoy by William Dugan, Martha's Vineyard, MA. In good OP with working t/u to white and a drip of light gray paint on the back and down one side. Nice form. Check from behind the head to 3 in from the tail. Tight check on the left side of the head. Some filler showing in neck seam.

1000-1500

258. Solid body redhead drake decoy with carved wings and tail and no eyes by Morence "Square" Gould, Chatham, MA., ca. 1940's. In XOC except for an open check in the center of the back. Head is loose. Deeply carved and crossed wing tips in the manner of his mentor Elmer Crowell.

1000-1500

259. Solid body goldeneye drake decoy with tack eyes ca early 1900's by Charles Hart, Marblehead, MA. In XOC with a coat of sealer. Line age check on the body. Rigged for use.

800-1200



259



258



260



261

260. **Hollow Stratford school pintail drake decoy 1930-1950 with glass eyes and a curved metal tail by a talented unknown maker.** In XOC with a few minor surface chips and light wear. See top of page 52 for a similar example made by "Shang" Wheeler in the Luckey and Lewis book, *Collecting Antique Bird Decoys and Duck Calls*. 1800-2400

261. **Hollow bluebill hen attributed to Sam Collins of Essex, CT.** Old in use paint, with OP on the bill, neck check, line age checks on the body. No eyes, sleek form. 400-600

261A. **Oversize goldeneye drake decoy attributed to Sam Collins of Essex, CT.** Glass eyes and old paint with an inlet weight. Rounded body with a flat paddle tail and surface dents and rubs. Chip off tip and underside of the bill. 500-750

262. **One-piece Mass lesser yellowlegs decoy with painted eyes.** Paint appears to be mostly OP with light wear. Struck by a few shot. 800-1200

263. **Carved wing dowitcher decoy with very old crazed and cracked paint.** Struck by shot, line checks in the side of the body and an "X" carved into the underside of the tail. 600-800

264. **Hollow tack eye bluebill hen decoy ca early 1900's from the Stratford, CT area by an unknown maker.** Seam line open, teardrop weight, thin check in the side of the head. Dr. George Ross Starr Collection tag on the bottom. "BB #26". 800-1200

262-263

264

261A





265PR

265. Pair of exceptionally nice feeding flattie Cape Cod yellowlegs decoys ca early 1900's with split tails. 800-1200

266. Split-wing and tail "Lumberyard" yellowlegs decoy with carved eyes. OP with a few rubs on the body and chips on the tail edges. Stick is glued in place. 600-900



266-267

267. Turned head plover decoy with great form and paint from Long Island, NY. Crazed paint, old bill replacement. Struck by shot. Small chip in the wood at the tail. 800-1200

268. Massachusetts yellowlegs decoy with tack eyes and good OP with a few small chips at the edges of the wings. Struck by a few shot. 800-1200

269. Massachusetts yellowlegs decoy with tack eyes and good OP with a few small chips at the edges of the wings. Struck by a few shot. Rig mate to the previous lot. 800-1200

270. Large gunning curlew decoy ca early 1900's with tack eyes and a split tail by Alfred Gardner, Accord, MA. One of the finest shorebirds we've seen by this maker. In XOC. Few chips off the painted metal bill. 2000-3000



268-269

271. Running "peep" decoy with carved circular eyes by Hurley Conklin, Manahawkin, NJ in XOC. 500-1000

270-271





272

273



274

275



272. Cobb Island black-bellied plover shadow with a typical Cobb style split tail. In very attractive worn original paint. Piece missing off the original bill. 800-1200
Provenance: Pitt collection.

273. Very early ca 1900 black-bellied plover in original paint with old crazed and crackled surface, old bill. Branded E C Cole on one side. 600-900
Provenance: Pitt collection.

274. Yellowlegs by Gardner-Dexter from Westport, MA. ca 1900. Bill replaced professionally by Weaver. Original paint attractively worn. Struck by shot with one shot making a notch in the neck. Outstanding decoy with great provenance.
Provenance: Lyle family gunning rig. 4500-5500

275. Flat sided, (1 1/2in wide) dropped tail plover decoy in very old working paint with heavy wear and crazing. Made without eyes. Great form. 1200-1800

276. Hollow Long Island, NY Canada goose decoy with carved eyes and a bottom board. Appears to be OP with heavy chipping on the breast. Bill restored. 1200-1500

276





277

277. Hollow preening mallard drake decoy by John McLoughlin, Bordentown, NJ. In XOC with carved crossed wing tips and tail feather carving. Glass eyes. Bottom Stamped "John McLoughlin, Holloway Lane, Bordentown, NJ". 1500-2500
Provenance: Pitt collection.



278

278. Hollow canvasback drake decoy with a turned head by John McLoughlin, Bordentown, NJ. In XOC with carved crossed wing tips and tail. Glass eyes. Two or three tiny flakes along neck seam. Bottom signed "John McLoughlin." 1500-2500
Provenance: Pitt collection.

279. Hollow canvasback hen decoy with a turned head by John McLoughlin, Bordentown, NJ. In XOC with carved crossed wing tips and tail feather carving. Glass eyes. Bottom signed "John McLoughlin." 1500-2500
Provenance: Pitt collection.

280. Hollow sleepy red-breasted merganser hen decoy with glass eyes and a carved crest in XOC. Signed "W. F. Conroy, Jamestown, RI" and stamped "Colburn C. Wood Jr" a number of times on the bottom. 250-350



279

281. Pair of hollow sleek American mergansers with carved wing and tail feather detail. Hen is branded "H. Allibone, Bordentown, NJ." 800-1400

281PR



280



282



282A

282. **Slat Goose by A. E. Crowell.** Hole in one slat on the right side. Some minor wood chipping at end of the slats. Mostly original paint remains as the over paint wore off. Large, important piece of Massachusetts waterfowling history. These huge decoys were used together with live goose decoys in the early 1900's. 800-1200

282A. **Rare gunning swan decoy from the Quicksand Pond Gunning Club in Westport, MA.** In good old working paint with wear and some chipping to the surface. Two open neck checks. Now thought to be made one of the makers of the Gardner Dexter decoys. Weighted. 4500-7500

284



283



283. **Solid body surf scoter drake decoy from Maine in very old working paint with numerous checks and surface wear.** Some flaking filler, two or three knots. Neck has two vertical checks. Used in the early DU poster done for a Rhode Island chapter. 600-900

284. **Solid body white wing scoter hen decoy with rusted tack eyes from Maine in very old working paint with numerous narrow checks and surface wear.** Neck has two vertical checks, one from the top of the head down through the neck. Used in the early DU poster done for a Rhode Island chapter. 600-900

285. **Solid eider drake decoy from Maine with nicely carved wing and tail detail.** Thin check from the breast to the tail along the right side. In XOC with light wear. 400-600

285



286



286. Solid body bufflehead drake decoy from NC in good old gunning paint with light wear and a few flakes from the surface. Interesting forged iron weight. 400-800

288



289



287. Solid body bufflehead drake decoy from NC in good old gunning paint with light wear and a few flakes from the surface. Interesting forged iron rod weight. 400-800



287

290



288. Scoter decoy from the famous Haffenrefer estate in Bristol, Rhode Island. Very old working paint with painted eyes. Open neck check, head loose, filler on the back is cracked and flaking, struck by a few shot. Bottom is stamped twice "Property of Mount Hope Farms, Bristol, Rhode Island". The Haffenrefer Family were the owners of a large brewery and The Mount Hope Farms was on the RI shore of Narragansett Bay. 200-400

290. Hollow turned head black duck decoy by Ken Anger, Dunnville, Ontario, Canada in XOC. Virtually mint. Branded "G. W. Lowry, Hamilton, Ont". 800-1200

289. Scoter decoy from the famous Haffenrefer estate in Bristol, Rhode Island. Very old working paint with painted eyes. Open neck check, head loose and struck by a few shot. Bottom is stamped twice "Property of Mount Hope Farms, Bristol, Rhode Island". The Haffenrefer Family was the owners of a large brewery and The Mount Hope Farms was on the Rhode Island shore of Narragansett Bay. 200-400

291. Outstanding pair of hollow turned head bluebill decoys by Ken Anger, Dunnville, Ontario, Canada in XOC with a few tiny rubs. Virtually mint. 1000-1500



291PR



292



294

292. Hollow deep-bodied mallard drake decoy with wonderful carved wing and tail feathers and a real feather tail curl. Great OP with crazing on the breast and the head. Ca 1938. Milwaukee Museum School, WPA Project. Rare example. "Drake Mallard, Dettman." This exact decoy is pictured on page 136 bottom Luckey and Lewis. N Trader on the bottom Milwaukee Museum School. Museum quality decoy. 3500-5500

293. Outstanding solid body mallard drake decoy. Very heavily weighted with three inlet circular lead weights. Luckey and Lewis picture this exact decoy on page 137 in Collecting Antique Bird Decoys and Duck Calls. Mallard drake ca 1935 attributed to Warren Dettman. Milwaukee Museum School. In XOC. 3500-5500

295



293

294. Hollow Illinois River pintail drake decoy with glass eyes by Louis P. Kelly, of Peoria, IL, circa early 1900's. Nice early paint with age crazing on the surface. White areas are old over paint. 6 inch lead weight. Tight check at the bottom of the neck. Few rubs.

Provenance: Pitt collection. 1200-1800

295. Hollow Illinois River mallard drake decoy with glass eyes and old period working paint. Some flaking and wear to the surface especially along the seam line. Struck by shot. 800-1200

Provenance: Pitt collection.

296. Hollow glass eye Illinois River mallard hen decoy with a layered three piece body and a weight branded "Dawson Decoys" on the bottom. OP, old repair to the bill, neck break, and a coat of heavy sealer. 500-1000

Provenance: Pitt collection.



296

297



297. Hollow turned head mallard hen decoy with glass eyes in XOC with a minor rub at the back of the head. Branded "Heck" Whittington, Oglesby, ILL, Dec. 20, 1975" on the bottom.

1500-2500

Provenance: Pitt collection.

298. Pintail drake decoy by Charles Perdew, Henry IL with typical Perdew lead strip weight on the bottom. Painted in his later years according to the book by Luckey and Lewis. Pictured on page 113. Possibly repainted by Perdew over original.

1500-2500

Provenance: Pitt collection.

Literature: Collecting Antique Bird Decoys and Duck Calls.

299. Hollow Illinois River pintail drake decoy in old very appealing over paint. Tack eyes, narrow check in the neck, Lead weight on the bottom with white overpaint along both sides.

800-1200

Provenance: Pitt collection.

300. Illinois River bluebill drake decoy with glass eyes and very old in use paint. Part of the underside of the bill is missing. "\$17" and "17-1" written on the bottom.

Provenance: Pitt collection. 600-900

301. Outstanding hollow Illinois River mallard drake decoy ca early 1900's in nice OP. Even wear. Small tack eyes, weight removed. Very nice carving with detail on the back and tail.

1200-1800

Provenance: Pitt collection.



298
299

300



302. Hollow long body Illinois River mallard drake decoy in OP with repaint and repair with wood dough near wing flash. No eyes, nicely carved cheek and bill detail. Some wear on the body along the grain lines, heavier on the top. Tight neck check. Typical strip lead weight on the bottom.

Provenance: Pitt collection.

500-800

301
302





303



306

303. **Hollow Illinois River pintail drake decoy by Perry Wilcoxon, Liverpool, IL. ca. 1930's.** In very nice OP with wear especially on the edges of the bill and tail and possibly all original or minor t/u to the white areas. Great comb painting on the body. Long strip lead weight and "153" in tiny numeral under the tail. 1500-2500

Provenance: Pitt collection.

304. **Mallard hen from the Illinois River, ca early to mid 1900's.** Very nice lines. Attractively repainted many years ago. 400-600

Provenance: Pitt collection.

305. **Mallard Drake decoy from the Illinois River.** Nicely repainted. 400-600

Provenance: Pitt collection.

306. **Early (ca 1900) hollow Illinois River pintail drake decoy with glass eyes and nice old repaint.** Tight check in the neck, wear on the edges of the bill.

Provenance: Pitt collection. 400-600

307. **Hollow long body Illinois River mallard hen decoy in OP with no eyes and nicely carved cheek and bill detail.** Some wear on the body along the grain lines, heavier on the bottom. Typical strip lead weight on the bottom. 400-600

Provenance: Pitt collection.

308. **Mallard hen decoy by Perry Wilcoxon, Liverpool, IL. with glass eyes, in old working paint.** 300-500

Provenance: Pitt collection.

309. **Hollow Illinois River bluebill drake with glass eyes and nice comb painting on the back.** Some OP with old repaint. E. V. C. branded into the bottom under the paint. Rigging and weight removed. Possibly a Carriage House decoy. 800-1200

Provenance: Pitt collection.

307
308



309





310

313(4)



314(2)



311
312



310. **Hollow IL River mallard drake decoy with tack eyes and an unusual deeply dropped tail design.** Old working paint that is chipped on the surface with some wood filler applied along the side seams. Weight removed. 200-400

311. **Hollow Illinois River mallard hen decoy with glass eyes attributed to Bert Graves.** Old paint. Half of bill appears to be replaced. Tight check in lower side of the neck. Weight removed. 300-450

Provenance: Pitt collection.

312. **Hollow Illinois River mallard drake decoy with glass eyes, in good old paint with possibly some original.** Strip lead weight on the bottom is branded GKB. 300-500

313. **Lot of four cast metal miniature decoys.** Two Canada geese and two drake bluebills. Some rust and wear on the surface. OP. Both bluebills have felt on the bottoms. 200-400

314. **Lot of two miniature composition fat jaws model bluebills made in the Ward Brothers style.** In XOC. 100-200

315. **Lot of two miniature decoys.** A Jess Urie mallard in XOC. "Capt Jesse Urie, Rock Hall, MD, mallard drake 1971" written on the bottom together with a miniature balsa Ward Brothers mallard in OP with wear on the sides and breast with some neck filler missing. Turned head. No signature. 400-600

315(2)



316. **Lot of 10 duck calls.** Wood and rubber Scotch Call, Detroit MI. A wooden call, Tom Gaskins Palmdale, Fla., on the side. Wood Old Guide, Mountain Home Arkansas. A wooden PS OLT Pekin, IL Regular Duck Call Model NO.D2. A wooden Lohman, Neosho, MO. A PS OLT perfect goose call. A "Tex Wirtz magic tone game calls" deluxe goose calls. One unmarked wood duck call and two unmarked goose calls, 1 with crosshatching on the side. 200-400

317. **RARE oversize black duck with glass eyes with carved wing outlines and a swimming head by Gerald Robertson, Blue Hill Maine.** Fine original paint with a few shot holes. Exceptional example by this maker. The best we've seen. 1500-2500

316(10)



317



318



319



320



321

320. Large goldeneye drake with a pegged inlet head (small piece missing at the front of the inlet) attributed to Sam Toothacre, Brunswick, Maine. In nice old working paint with some OP. Struck by a few shot. Check from the back of the head to tail, dent on the bill. Leather rigging thong, and a lead weight on the bottom. 500-1000

318. Miniature black duck in very good original paint with a fair amount of wear to one side. Nicely carved wing and tail detail signed "Carved and painted by Robertson, Blue Hill, Maine" on the bottom of the base. Tiny chip to the underside of the tail. This is the only miniature we have ever seen by this maker. 400-600

319. Hollow carved common or American Scoter ca 1900 from Maine with an interesting "horse head" design. Tag on the bottom reads "Extremely Rare" "From the John Dinan collection, found in the Portland or Casco Bay area". Inlet head, chip under the bill, a few knots and age checks in the body. Old in use paint and great bold form. Although thought to be a scoter by this collector the form looks more like a hen eider. 500-1000

321. Solid body white wing scoter decoy with unusual leather and lead bead hanging weight on the bottom. Nicely carved head. In original paint (OP) excepting the white areas are over struck and have t/u to the surrounding black. "R Lindsey Smallidge, Northeast Harbor, Maine," painted on the bottom. Light wear, tiny chip on the edge of the tail and a knot on the body above the tail. 500-750

322. Turtleback eider drake decoy from ME in good old working paint with shot scars and a check on the head and the center of the back. Original scallop ring weight with rope attached to the bottom. No eyes. 500-1000

323. Folky white wing scoter decoy from Maine with a pipe coupling in the bottom for a weight. Good old working paint, struck by shot. Inlet head appears to be a working replacement. 300-500



322



323



324

330



331

333



324. Turtleback Eider hen decoy from ME with a nicely carved ridge on the back, a tight neck check and wear to OP on the sides, top of the head. Nice form. Rigging removed. 800-1200

325. Solid body white wing scoter decoy with an inlet head from coastal Maine with OP and t/u to the white wing patches and the area around the eyes. Long lead weight on the bottom. Check on the side of the head. Narrow body checks. Photo on web site only. 300-500

326. Solid body white wing scoter decoy with a tag on the bottom that reads "Mt Dessert Island, Maine, ca 1900". Very interesting head shape without eyes. Old paint with wear overall. Few narrow slivers from the bottom of the bill. 14 inches long. Photo on web site only. 250-450

327. Solid body Maine white wing scoter decoy in old working overpaint. Inlet head with a few chips at the front of the neck joint, carved wing detail, no eyes. One check along the bottom and another from the middle of the bottom to under the tail. Photo on web site only. 200-400

328. Solid body white wing scoter decoy with an inlet head and tack eyes from the coast of Maine. Two circular inlet weights in the bottom with leather rigging thong. Black body paint appears to be original and the white wing patches and the white eye strike are t/u. Light wear, few shot holes and line age checks on the body. Photo on web site only. 300-500

334



329. Hatchet carved black duck. Nice primitive with a turned head & tack eyes. 250-350

330. Solid body white wing scoter decoy possibly by the Wildfowler Factory with a very nicely carved head and bill, and the original keel. Old working paint with surface flaking and moderate wear. 100-200

331. Large black duck decoy from Deer Isle ca early 1900's. In old mostly original paint. 200-400

332. Hollow black duck decoy ca 1930 with tack eyes and well weathered old surface. Made in seven horizontal layers of wood. Photo on web site only. 100-200

333. Oversized eider drake decoy made in an antique style from ME with a carved and painted mussel in the open bill. Wear on surface. Attractive design. 300-500

334. Hollow St Clair Flats black duck with glass eyes and good old working paint. "Captain Robert Heath, New Baltimore, MI c 1910". Old neck check, head loose. 300-500

335. Hollow Canadian duck decoy with tack eyes and original keel. Old bill crack with in use repair with a nail. Tight neck check. Old working paint. 300-500

335





336

336. Oldsquaw decoy attributed to Peebles from the Bailey Island area. In old over paint with original. Some over paint has been removed to original. Very nice small compact design. 300-450

337. Bluebill drake from Canada together with a mallard hen feeder decoy from the mid-west with tacked on rubber legs and feet. Probably made from inner tube. Pictured on web site only. 150-200

338. Lot of four unpainted decoy heads. Three wonderful eider heads and a Havre de Grace black duck head. Pictured on web site only. 200-400

338A. Miniature scarlet tanager by Jess Blackstone, Concord, NH. In XOC. "#23", "Scarlet Tanager", and the typical "JB" signature on the bottom in ink. 1200-1800

338B. Miniature goldfinch by Jess Blackstone, Concord, NH. In XOC. "#158", "Goldfinch", and the typical "JB" signature on the bottom in ink. 1000-1400

338C. Miniature golden crowned kinglet by Jess Blackstone, Concord, NH. In XOC. "#117", "Kinglet", and the typical "JB" signature on the bottom in ink. 1200-1600

338D. Miniature black throated blue warbler by Jess Blackstone, Concord, NH. In XOC. "#22", "Black Throated Blue Warbler", and the typical "JB" signature on the bottom in ink. 1200-1600

338E. Miniature grasshopper sparrow by Jess Blackstone, Concord, NH. In XOC. "#3", "Grasshopper Sparrow", and the typical "JB" signature on the bottom in ink. 1200-1600

338F. Miniature red breasted nuthatch by Jess Blackstone, Concord, NH. In XOC. "#5", "Red-Breasted Nuthatch", and the typical "JB" signature on the bottom in ink. 800-1200

338G. Miniature purple finch by Jess Blackstone, Concord, NH. In XOC. "#238", "Purple Finch", and the typical "JB" signature on the bottom in ink. 1200-1600

338H. Miniature redpoll by Jess Blackstone, Concord, NH. In XOC. "#21", "Redpoll", and the typical "JB" signature on the bottom in ink. 1200-1800



338A-338B-338C

338I. Miniature ruby crowned kinglet by Jess Blackstone, Concord, NH. In XOC. "#148", "Kinglet", and the typical "JB" signature on the bottom in ink. 1000-1400



338D-338E-338F

338G-338H-338I



339(2)

340-341



342



339. Lot of two carvings. A pair of miniature puffins on a single driftwood base in XOC. One bird has two fish in its bill. One has a tiny chip in a wing tip. Signed Joan Seibert, '81" on the side of the base. A miniature quail on a driftwood stick. In XOC, unsigned, but similar to Joan Seibert's work. 300-500

340. Pair of towhee mounted on a branch with a tiny carved wooden ladybug. Nicely detailed feather carving and turned heads. Signed on the bottom of the base "Lester Braddock, 1973" XOC. 200-400

341. Turned head tack eye purple finch on a driftwood base in XOC. Signed on the bottom "Peter Peltz, Purple Finch". 300-500

342. Miniature quail with glass eyes on a driftwood base signed "F. Kilburn, Waldoboro, Maine" "Bob White, (Quail)" on bottom of the base. XOC with a few tiny rubs. 300-500

343. Miniature turned head mallard drake with glass eyes on a driftwood base in XOC with some surface dirt. Carver unknown. Possibly Gilley. 200-400

344. Miniature decoy model of a pintail hen with raised wing tips and a carved tail by Charles Wilbur, Island Heights, NJ. In XOC. Branded "CW" on the bottom. 250-450

345. Very tiny miniature mute swan in XOC signed on the bottom "Esther Burns, 'The Duck Nest' St. Michaels, MD, 1983." 100-200

346. Lot of 2 miniatures in XOC. A redhead drake signed "Herb Daisey, Jr., Chincoteague, 76" and a miniature scratch painted black duck in the manner of Miles Hancock, Chincoteague, VA. 100-200

347. Lot of two decorative carvings. One a balsa like carving with wing and tail detail and the other is one from Ciudad Real, Spain made of bound and shaped reeds with a roughly carved wooden head. Photo on web site only. 10-20

343-344



346(2)

345



348
349



350
351

348. Hollow black duck from NJ with interesting carved wing detail, in nice old working paint. Few dents to the body along with some shot scars. A tight neck check. Lead weight. 300-500

349. High head black duck from Canada with glass eyes and a few narrow checks in body. Good old working paint. Chip 1/4 in wide by 1 1/2 in long on the underside of the bill. 200-400

350. Hollow black duck sleeper by George Stump from New Jersey. In XOC. 300-500

351. Hollow swimming brant decoy with carved eyes by Harry V. Shourds III. In good OP with wear on the sides and bottom. Bill broken and missing. 100-200

352. Hollow seagull with glass eyes and split wing carving by Charles Wilbur from Island Heights, NJ. In XOC with cracked surface. Branded "CW" and signed "Charles Wilbur" in pencil on the bottom. 350-550



354



355

352



353



353. Antiqued seagull decoy by an unknown maker with glass eyes. 200-300

354. Balsa body goldeneye drake decoy by Decoys Unlimited Co, Erie, PA. The original ink stamp is on the bottom. Keel removed. In good OP. 200-300

355. Redhead drake from the St. Clair Flats area. In attractive old paint. Hollow carved. 250-350

356. Bluebill drake decoy. Hollow with an oval inlet bottom board. Attributed to Sam Denny, Alexandria Bay, NY. Nice eye groove, glass eyes. Great comb painting on the body. Black areas may have t/u. Sliver off the right underside of the bill. 500-1000

357. Canvasback drake decoy with nicely carved wing and head detail. Signed R. Wolf on the unpainted bottom. Glass eyes. Unused, In XOC. 200-400
Provenance: Pitt collection.

358. Glass eye canvasback drake decoy by C. Jenson, Ledington, Michigan. Wide body with an interesting linear carving near the square cut tail and detailed cheek and bill carving. In XOC. 200-400
Provenance: Pitt collection.



356



357
358



359



361



362



360PR



363PR

359. Canvasback drake decoy, maker unknown. In nice OP with glass eyes and nice detailed wing and tail carving. Possibly from Michigan. 200-400
Provenance: Pitt collection.

360. Pair of wood duck decoys with glass eyes by Holger Smith. Signed in ink "Holger G. Smith, Fairhaven Rd. 92 Mattapoisett, Mass 1979" on the bottom. Also with impressed brand. XOC few rubs and scratches on the edges of the tails. 400-600

361. Red-breasted merganser drake decoy. Nicely carved crest and glass eyes. Signed in ink "Holger G. Smith, 92 Fairhaven Rd. Mattapoisett, Mass 1981" on the bottom near his impressed brand. In XOC with a few rubs, tiny paint chip on top of crest. 400-600

362. Pintail drake decoy with glass eyes, signed in ink, "Holger G. Smith, 92 Fairhaven Rd. Mattapoisett, Mass 1981" also impressed brand. In XOC, a few minor rubs. 400-600

363. Pair of green-winged teal decoys with glass eyes, signed in ink "Holger G. Smith, 92 Fairhaven Rd. Mattapoisett, Mass 1973". Also with impressed brand. In XOC, a few minor rubs. 750-950

364. Oldsquaw drake with glass eyes signed in ink "Holger G. Smith, Fairhaven Rd. Mattapoisett, Mass 1979" on the bottom. Also has his impressed brand. In XOC, a few minor rubs. 450-650

365. RARE Puffin decoy with raised wings and glass eyes signed in ink "Holger G. Smith, Fairhaven Rd. Mattapoisett, Mass 1980". Also with impressed brand. In XOC with a few minor rubs. 450-650

366. Wigeon drake decoy with glass eyes. Signed in ink "Holger G. Smith, 22 Fairhaven Rd. Mattapoisett, Mass, 1974" on the bottom. Also has his impressed brand. In XOC with a few minor paint rubs. 400-600



364



365



366



366A



367
368



370



369



371

366A. Canada Goose decoy with glass eyes. Signed in ink, "Holger G. Smith, 92 Fairhaven Rd., Mattapoisett, Mass. on the bottom. Also has his impressed mark. 400-600

367. Tack eye yellowlegs in the design of Joseph Lincoln, Accord, MA with impressed brand "WEK" for Will E. Kirkpatrick, Hudson, MA and date "82" on the bottom near the stick hole. In XOC. 200-400

368. Woodcock carving with glass eyes signed "Will Kirkpatrick, Hudson "83" " on the bottom. In XOC. 150-250

369. RARE Pratt Factory Back Bay model canvasback drake decoy in old working paint with some OP on the head bill and dark areas. Some white has been repainted. Numerous checks on the body, old in use neck repair with four nails that have rusted. 500-1000
Provenance: Pitt collection.

370. Mason Factory Detroit Grade Glass Eye black duck. In original paint with overall wear. Wood visible on the edges of the bill and tail. Narrow check on the neck has been reglued. Check on the bottom under the weight. A few line checks on the body. 250-450

371. Mason Factory Standard Grade green-winged teal drake decoy in excellent restored condition. Branded "R. J. Thorne" on the bottom for the owner. 300-500
Provenance: Pitt collection.

372. Lot of two Mason Factory Detroit Grade Painted Eye bluebill drake decoys in old working paint probably by James Look. Some OP. One has roughage along the tail edge. Consigned by a descendant of the Look Family from Martha's Vineyard, MA. 300-500

373. Lot of two Hays factory black duck decoys. One in OP with overall wear and glass eyes. Open 1/8 wide check from near the breast to three inches from the tail on the side. Knot on top head has flaking filler and the head is loose from the body. One in old working paint with an open check on side and a thin check in the head from the back to the bill. 300-500



372(2)



373(2)



374
375

377PR



375A
376



378
379

374. **Mason Factory Premier Grade redhead hen in old repaint that is nicely done.** Structure sound. 200-400

375. **Mason Premier redhead drake decoy in nicely restored condition.** Light wear on the body. Glass eyes, neck seam visible with some filler loss. Seam on the bottom has reinforcing staples. Struck by a few shot. 200-400

375A. **Hays Factory redhead drake ca early 1900's.** In XOC. Glass eyes. 400-600

376. **Hays Factory bluebill drake decoy M or W brand on the bottom.** Original check near the top of the body with filler missing and a line check on the head. Check on the bottom from the breast to the tail. OP with light wear overall. 400-600

377. **Pair of Mason Factory Detroit grade glass eye bluebill decoys in OP with heavy wear and possibly some over-paint on the white.** Neck filler cracked with some missing. Drake has numerous body checks with reinforcing staples. One glass eye cracked. CO branded on the bottom of the hen. 200-400

378. **Factory redhead drake decoy with glass eyes and heavy in use wear.** Rigged for use and struck by shot. Some original paint, some over-paint. 150-250

379. **Mason Factory Premier Grade bluebill drake decoy in very nice old restored paint in the traditional manner.** Structure sound. 300-500



380. **Mason Factory Detroit Grade glass eye buffle-head drake with restored paint.** Few checks on the bottom with filler added. Sound structure. 300-500

381. **Factory made bluebill hen in excellent original condition.** Possibly by the Passagoula Decoy Company. 200-400

382. **No. 1 Smooth mallard by the Pratt Co. Glass eyes.** In OP with wear and wood visible in places. Narrow check on the back 7 to 8 inches long. Check left side of head 3 inches long. Few chips in paint on the breast. 200-400



380
381

382





383
384

383. Mason Factory Premier Grade decoy with no paint. Probably a black duck. Sound structure few checks filled.

200-400

384. Mason Factory Challenge Grade black duck in old working paint, hit by shot, tail chip, old reglued neck check near neck seam. Check on the bottom from the breast to near the underside of the tail with metal staple repair.

200-400

385. Original oil on board of a James Look redhead drake decoy signed by the artist, Bob Piscatori. Sight size 10 1/2 x 14 1/2 inches Nicely framed, XOC. 500-1000



385



386

386. O/B of a James Look, Martha's Vineyard, MA, goldeneye drake decoy by Stan Sparre. 12 1/2 x 8 1/2 inches. Nicely framed, XOC. 400-600

387. Massachusetts State Waterfowl Stamp print number 15/400 with color remarque lower left of a Lothrop Holmes ruddy turnstone decoy, by Randy Julius, 1979. XOC matted and framed with the stamp. Sight size is 13 1/2 x 10 inches. 400-600

389. MA. State Waterfowl Stamp print, 1977, (2nd edition) of a Luther Nickerson goldeneye drake decoy by Wm P. Tyner framed with the stamp. XOC. Sight size is 12 1/2 x 8 inches. 250-450

390. MA. State Waterfowl Stamp print number 96/175, 1978 of an A. E. Crowell preening black duck decoy by Wm P. Tyner, Sight size 13 1/2 x 10 inches. Nicely framed with the stamp. XOC. 300-500

388. Massachusetts State Waterfowl Stamp print number 107/125 AP with remarque lower left of a Fred Nichols curlew decoy by John Eggert, 1997. In XOC matted and framed with the stamp signed by the artist. 13 3/4 x 10 3/4 inches sight size. 400-600



388



389



387



390



391



393



392



394

391. MA State Waterfowl Stamp print number 111/125 Artist Proof of a Keyes Chadwick redhead decoy by Randy Julius, Sight size 13 1/2 x 10 inches. Nicely framed with the stamp. In XOC. 250-350

392. MA State Waterfowl Stamp print, 1980, 38/600 of a Lothrop Holmes old squaw drake decoy by John Eggert with a pencil remarque lower left. Sight size 13 1/4 x 10 inches, framed with the stamp. In XOC. 400-600

393. MA State Waterfowl Stamp print number 51/100 AP, 1995, of a Joseph Lincoln hooded merganser hen decoy by noted contemporary artist David Brega, Sight size 13 1/2 x 9 1/2 inches. Nicely framed with the stamp. Color remarque lower right. XOC. 400-600

394. MA State Waterfowl Stamp print number 10/30 AP, 1986 of a James Look preening bluebill drake decoy by Robert Piscatori, remarqued lower left 13 x 9 1/2 inches. Nicely framed and with the stamp. In XOC. 400-600

395. Wildfowler Canada goose decoy with glass eyes, a cork body, a pine head, and bottom board. In XOC with slight roughage at the tail. No brand. 200-300

396. Long Island, NY working cork black duck decoy unknown maker in XOC with an unusual tooled weight on the bottom. 150-250

397. Balsa body canvasback drake decoy ca. 1948 by the Ward Bros. Turned head and glass eyes, in old working paint by the Ward Bros. 1948. Keel removed. 500-1000

398. Hollow Canada Goose by H. V. Shourds, Tuckerton, NJ. In good restored paint. Neck checks with restoration, one tack eye missing, Flush weight in the bottom. 500-1000



398

395
396-397



399

399. Hollow body merganser drake decoy attributed to Mark Kears of Northfield, NJ., ca 1920. See page 130, plate 289, in New Jersey Decoys by Henry Fleckenstein, for a similar merganser. Old worn paint and good structure. OP on the wing and back. Tight neck check with an old in use repair. 800-1200



400

400. Solid body merganser drake decoy with glass eyes. Nicely carved crest and original lead weight on the bottom. Heavily worn surface, very appealing decoy. 600-900



400A

400A. BOLD DEEP-BODIED CARVING OF A RARE RED-BREASTED MERGANSER DRAKE BY ANTHONY ELMER CROWELL FROM the Mayo rig. This early decoy is a classic deep-bodied tucked head resting merganser with Crowell's earliest and best paint. Note the subtle raised tuft at the bottom of the comb where it joins the body. This cataloger has seen two hens from the Mayo rig that match this drake and both have the same raised carved tuft at the back of the head. The back of the head and the breast are textured with the rasp. This merganser is in virtually mint condition. No checks or cracks in the body or head. Early painted tack eyes. Though rigged for use with a rectangular lead weight held on with 5 nails and a circular stringing ring, it appears that this decoy never went overboard. Deep C M (Clinton Mayo) hot brand in the bottom along with an early, clear oval stamp. The clear, unobliterated stamp, dates this decoy to somewhere between 1912 and 1915. This is a classic Crowell gunning merganser decoy for the advanced collector. 40,000-55,000

Provenance: Clinton Mayo rig, Cape Cod.





400B

400B. RARE SWIMMING merganser hen decoy by Anthony Elmer Crowell in fine original condition. Fitted with glass eyes and the early clear oval brand on the bottom. The back of the head and breast have been textured with a rasp. A technique Crowell used on a majority of his gunning decoys. Dates to circa 1912 to 1915. In untouched original condition with light wear mostly to the left side of the head and edges of the tail. See photos.. No checks or cracks in the body or elsewhere. Struck by a few shot. A classic swimming merganser decoy by Cape Cod's master carver. 18,000-22,000

400C. Black duck decoy with glass eyes made by Joseph Whiting Lincoln from Accord, MA. Made in his finest early snakey neck style. Circa early 1900's. Typical check running along the bottom from under the tail into the lower breast. Check in the lower neck. In very attractive old gunning re-paint. The square lead balance weight is held on with four neatly placed nails. 1200-1800

400D. Early pre-stamp period slightly oversized white-winged scoter decoy by Anthony Elmer Crowell of East Harwich, MA. circa 1905-1910. Typical rasping on the back of the head and breast. No checks in the body. Tight neck check. Black paint appears original, the white wing patch is has been re-coated. Head re-inforced with a spike driven down from the top of the head into the body. All the scoters from this rig were done in this manner. A drill was probably used first before the spike was inserted and nailed into the body. This rig was found in Chatham, Massachusetts, by Keith "Kitt" Kittredge in the late 1960's. Probably used at the Monomoy Gun Club. 1200-1800

400C



402
403

401. Hollow tack eye black duck by Harry V. Shourds, Tuckerton, NJ. Rectangular inlet weight, most of the paint has been removed. Tail check approx 3 in long with original filler visible. Seam line visible. "510-FWN" brand impressed into the bottom. 300-500

402. Hollow redhead drake decoy with painted eyes possibly by Lloyd Parker, Parkertown, NJ. In very old worn paint, flush lead weight on the bottom. 400-600

403. Hollow redhead drake decoy similar to the work Tom Gaskill, Toms River, NJ. One shoe button eye and one missing. In old worn and weathered paint with HM impressed into the circular weight on the bottom. 250-450

400D



401



404
405-406



409
410

407
408



404. Bluebill drake decoy by Henry Grant, NJ with "Henry Grant" written on the bottom. Knot hole on the back of the head. Seam open on bottom under the tail. Old working paint. No eyes. 250-450

405. Bluebill drake decoy ca 1900 by Nathan Rowley Horner, West Creek, NJ. In old restored paint. Check in the neck and the bill. 400-600

406. Hollow New Jersey redhead drake decoy ca early 1900's in nice old repaint with weight removed. Structurally intact. 250-450

407. Solid body brant decoy from the Brigantine, NJ area with wear to the neck and on the top of the head but in mostly OP. 500-750

408. Early swimming hollow working brant decoy by Hurley Conklin, Manahawkin, NJ. Black areas are repainted, remainder appears to be OP. 400-600

409. Solid body goldeneye drake decoy from NJ in old paint with a lead weight on the bottom. 300-500

410. Goldeneye drake decoy ca early 1900's with painted eyes by August Heinfeld, Rock Hall, MD. In fine original paint with and original lead weight and "TBJ" hot branded on the bottom. 500-1000

411. Bluebill drake decoy by Jacob Bruinooge, Wellfleet, MA. Glass eyes, few neck cracks, two piece solid body, flaking paint on breast and head. 150-250

412. Black duck decoy with glass eyes and carved crossed wing detail by Ed Owen, Dennis MA. In XOC with the original unpainted keel and branded E. Owen on the bottom. 200-300

413. Hollow black duck from NJ with tack eyes and old repaint. Narrow check in the bill near the head. Wear to the tip of bill with some wood missing. 200-300

414. Hollow black duck decoy in old paint with glass eyes by John Updike, Green Bank, NJ. ESJ carved into the bottom. 200-300

411
412



413
414





415



416
417



418



419
420

415. Hollow Delaware River black duck decoy, maker unknown. Glass eyes. Appears to be OP with possible t/u to a few spots. 400-600

416. Pintail drake decoy by Miles Hancock, Chincoteague, VA with nice scratch painting and tack eyes. OP with possible t/u to the white. Check on back from behind the neck to two in above the tail open to 1/4 in the center. GRL impressed in the lead weight on the bottom. 300-500

417. Susquehanna River canvasback drake decoy with glass eyes, some OP and some over paint to the black on the tail and some of the white. Keel on the bottom. 200-300

418. Black duck decoy by Doug Jester from Chincoteague, VA. Paint appears to be by Jester. Check on one side of the body 1/8 in breast to tail. Clean neck check. Bill has possible repaint by Jester. 300-500

419. Solid body canvasback drake decoy attributed to James Holly with glass eyes. Very old in use repaint by a different hand. 200-400

420. Chesapeake Bay bluebill drake decoy with painted eyes and nice OP. Possibly by Jess Urie, TADJ branded into the bottom near the weight. 200-400

421. Hollow brant decoy from NJ with pegged construction, no eyes, and the original lead weight. Neck check glued and t/u. In OP with over paint on the white areas signed in pencil on the bottom "Harry Fennimore, Bordentown, NJ". 300-500

422. Solid body Louisiana yellowlegs decoy with no eyes and an open neck check. Good OP. Unusual one-piece head, bill, and neck. 200-300

423. Lot of two decoy heads. A redhead drake head by Ben Smith or Keyes Chadwick of Martha's Vineyard, MA., and a black duck by an unknown Vineyard maker. 200-300

424. Lot of two folding tin plover decoys in OP with some surface flaking together with a varnished half of a yellowlegs mounted on barn board plus the other half of the mounted example. Yellowlegs pictured on web site. 100-200

422



421



423(2)



424(2)

