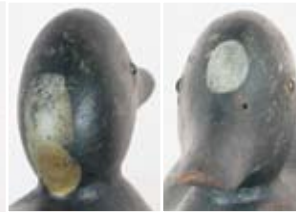


DAY TWO - Tuesday, July 31, 2007



300 detail

300



301



302



303

300. Extremely rare Mason Factory Detroit grade glass eye surf scoter in very good original paint including original identifying white patches on head. Exhibits a few shot scars, and average in use wear to the surface. Small circular inlet lead weight. Original white glass eyes which are anatomically correct for this species. Neck filler replaced and small in-factory checks on both sides professionally restored by Paul Fortin. To date, we have been told the only other known exactly like this example is in the Goodman collection. 3500-5500

301. Exceedingly rare, exceptional Petersen/early Mason Factory ca. late 1800's slope-breasted challenge grade black duck. In XOP with strong original feathering/swirling, minor gunning wear, and a tiny areas worn to wood. A little neck filler replaced by factory decoy restorer Paul Fortin. Struck by a few shot. Part of an old printers plate was used as weight. 5500-7500

302. Rare Mason Factory Tack Eye red-breasted merganser drake from the Martha's Vineyard gunning rig found in the Frank Adams barn. Typical circular inlet lead weight in the Vineyard manner on the bottom. In very good original paint, line age check on top of tail, hit with a few shot. Professionally replaced filler in an original check on the lower left side of the body. Nice mellow patina. 2500-4500

303. Rare Mason Factory Tack Eye red-breasted merganser drake from the Martha's Vineyard rig found in the Frank Adams barn. The same Adams that made the ship weathervanes, gunning decoys, and paperweight miniatures. Typical Vineyard circular inlet lead weight on the bottom. OP with grain line flaking on the back and sides of the body. Line check on left side of the body. Two knots on the back few surface dents. Some professionally replaced filler in an original check on the lower right side of the body. Nice mellow patina. 2500-4500



303A

303A. Rare Peterson/Mason Factory slope-breasted challenge grade black duck. In strong original paint. Wear to edge of bill and minor gunning wear. Professional restoration to age crack along back and neck filler by Mason restorer Paul Fortin. Part of an old printers plate is nailed to the bottom to act as a balance weight. 3500-4500



303B



303D(PR)

303B. Rare Mason Factory Challenge Grade merganser hen. In strong original paint. Minor gunning wear. Two minor chips to one side of tail, paint worn to wood on small area of back, and a couple other minor areas. Several shot marks. From a rig used on Tuckernuck Island, Mass. Tight age crack in back. Neck filler by Paul Fortin. 3500-4500

303C. Mason Factory Premier Grade black duck in XOC. Struck by a few shot. Outstanding decoy. In out of the rig condition. Excellent original paint with a few minor rubs and imperfections. An original tail chip has been glued back in place by the hunter/user who also made a few whittle marks at the top of the tail that have darkened with age. 4500-6500

303D. Pair of redhead decoys by the Peterson Factory. Fine OP with moderate wear. Sliver of wood missing from left side of one decoy in area of a body check. Some neck filler missing from both. 1200-1800



303E



303G



303C

303E. Mason Factory Detroit Grade canvasback drake decoy with glass eyes and an original Raymond Lead Co. weight. Narrow check on the right side, neck filler cracked but not missing, struck by shot. "JFF" and "FEM" branded on the bottom. 600-900

303F. Mason Factory Premier Grade mallard drake decoy in good OP. Small tail chip repair with t/u and wear to paint on the top of the head and tip of the bill. Branded numerous times "Colburn C. Wood, Jr." on the bottom along with "A 84 " in ink. 800-1200

303G. Early Mason Factory Challenge grade brant decoy. Unusual immature plumage circa 1895-1900. A couple tight age checks show. Check in bottom. Check in neck, and about half the neck filler is missing. This decoy has more than a century of stories to tell and shows moderate gunning wear. Paint is mixture of original with some gunning repaint. Worn to wood in a couple places. Tail and bill have minor roughage and there are a few shot scars. This is an old Mason brant, in a as found and gunned over condition that is getting harder to come by. 2500-4500

303H. Hays Factory Standard Grade redhead drake decoy in OP with wear to wood on the tail, and overall average in use wear. Neck filler missing. Two open 1/8 in wide checks on the back extend from the breast to above the tail. 600-900



303F



303H



303I



303J



303K



304



305



306(PR)



307

303I. Mason Standard Grade Glass Eye bluebill drake in old mostly original paint with flaking on the lower breast. Two narrow checks on the bottom with an original Pratt Factory weight. Neck filler is cracked and some is missing.

300-500

303J. Mason Factory standard grade tack eye scoter or black duck in old black paint. Neck filler is missing. Good original condition with minor gunning wear to paint.

500-750

303K. Mason Standard glass eye bluebill drake with large bottom check. Some original paint with crazing, neck filler cracked with some missing.

200-400

Provenance: Saltonstall gunning rig

304. Mason Factory Premier Grade bluebill drake with OP. Old filler repairs to head, neck and one side. The paint in these areas has been touched up. Age line around body seam.

Provenance: Pitt collection

800-1200

305. Mason Factory challenge grade bluebill drake. Appears to be in fine original paint. A few small areas may have touch up. Filler on bottom where old weight was removed.

1500-2500

Provenance: Pitt collection

306. Mason Factory standard grade painted eye bluebill pair. Fine original paint with some wear. Some neck filler missing. Outstanding matched pair of Mason's smallest bluebill model.

800-1200

307. Excellent Mason Factory standard grade glass eye bluebill hen in excellent original paint. Very light wear.

Provenance: Pitt collection

600-900

308. Mason painted eye mallard hen. In good OP which shows areas of wear. Left side of body and neck have a "glue like" stain. Few chips to bill and body.

400-600

Provenance: Pitt collection

309. Mason Factory painted eye mallard drake. In nice old original paint. Most of the neck filler missing.

400-600

Provenance: Pitt collection



308



309



310



311



312



313



314



315

310. **Hays Factory standard grade glass eye bluebill drake.** In strong original paint with some wear to tail edges, a few rubs, shot marks. One shot hole in the bill. 800-1200
Provenance: Pitt collection

311. **Mason factory standard grade bluebill hen.** Strong original paint with the usual light gunning wear. Some paint loss at neck filler. Chip in bill. 600-900
Provenance: Pitt collection

312. **Mason Factory oversize Premier grade bluebill.** Good original paint, eyes are cracked and end of bill edge wear. Age crack to body seam, tight crack on back, and neck filler have had old wood filler added. Pictured page 173, second and third plates from the top in Luckey and Lewis. 800-1200
Provenance: Pitt collection

313. **Hays Standard Grade Glass Eye mallard drake.** OP with touch up possible in the tail area. Neck filler cracked and some missing. Tight check in bottom. 600-900
Provenance: Pitt collection

314. **Rare Wildfowler Factory pintail drake decoy.** Hollowed from below with recessed bottom board. OP shows gunning wear to top of head, bill and along the edges. Tight crack in neck. 400-600
Provenance: Pitt collection

315. **Wildfowler Factory balsa goldeneye drake decoy in OP with light wear, a few rubs and a small chip missing from right bottom edge.** Faint imprint of old, small red stamp on bottom indicates a very early model by this factory. X. Early So Shore, Mass. Collection. 200-400

316. **Miniature ruffed grouse on driftwood base by Harold Gibbs, Barrington, RI in XOC.** Detailed feathering, Signed on base "H Gibbs, 1969". 600-900

317. **Miniature cock pheasant on a small driftwood base by Harold Gibbs, Barrington, RI in XOC.** Very detailed feathering and beautiful color with a long upswept tail. Signed "H. Gibbs, Aug. 1969" in pencil and Ring-necked Pheasant in ink on the bottom of the base. 600-900

318. **Miniature woodcock in XOC by Gibbs.** Proud, upright stance with great detail. Signed "HG 1945" woodcock #12. 600-900



316-317-318-319

319. **Miniature mikado pheasant in XOC by Gibbs.** Signed "HG 1942" #29. 450-550



323-324-325



Harold Gibbs

320. **Miniature mallard drake by Gibbs.** XOC. Signed "H Gibbs 1968". 500-750

321. **Miniature red-breasted goose.** By Gibbs. XOC Un-signed- base is from the same piece of driftwood as lot 322. 500-750

322. **Miniature old squaw drake by Gibbs.** XOC. Signed "H Gibbs 1969" 600-900

323. **Miniature Cape May warbler by Blackstone in XOC.** Base reads "6318 Cape May Warbler" "JB" signature. 900-1200

324. **Miniature blackburnian warbler by Blackstone in XOC.** Base reads "72 Blackburnian Warbler" "JB" signature. 900-1200

325. **Miniature goldfinch by Blackstone in XOC.** Base reads "271 Goldfinch" with a partial signature. 500-750

326. **Miniature Blue Goose by A. J. King of North Scituate, RI.** In excellent original paint. Minor imperfections. Signed "AJ King" on back of base. Bottom of base has original "The Crossroads of Sport, Inc. 15 East 54th Street, New York" paper label. 1200-1800

327. **RARE MINT miniature ruddy turnstone by Jess Blackstone in XOC.** Base reads "23 Turnstone" with a "JB" signature. 1200-1800

328. **Miniature blue-winged teal drake by Blackstone in XOC.** Beautiful carved primary feather detail. Base reads "38 Blue-winged Teal" with a "J B" signature. 900-1200

329. **Miniature wood duck drake by Arthur Blackstone, Melrose, Mass.** In XOP. Neck has been reglued. Small ding on tail. Base reads "Wood-" and has an intertwined initial signature and a rare paper label which reads "A. M. Blackstone, 114 West Foster Street, Melrose, Massachusetts" 450-650

330. **Miniature mallard drake.** Original paint. Neck has been reglued. Small rough spot on tail. Bottom reads "Mallard". Possibly by Arthur Blackstone. 200-300

331. **Miniature loon by Arthur Blackstone.** In XOP. Tip of bill ding and very small paint flake off tail. Base reads "Loon-", Initial signature with his paper label. Tip restored professionally by Steven Weaver. 500-750



326-327-328



329-330-331



332-333



334-335-336



337-338-339

332. Miniature ring-necked pheasant on a driftwood base by A. E. Crowell, East Harwich, Mass. Tiny bill tip rub retouched by Steven Weaver. In XOC in all respects otherwise. Bright vibrant colors. Base retains Crowell's early paper label which was cut to fit the base. 2200-2800

333. Miniature ruffed grouse by A. E. Crowell, E. Harwich, Mass. Minor bill tip ding retouched professionally by Steven Weaver. Great paint with nice patina. Chip carved base. Base has Crowell's impressed rectangular brand and ink signature "A.E. Crowell, Cape Cod." 2200-2800

334. Miniature towhee by A. E. Crowell, E. Harwich, Mass. XOC on a small driftwood base. Base has a #6 and an early Crowell paper label cut to fit the base. 1800-2200

335. Miniature bluejay by A. E. Crowell of East Harwich, Mass. In excellent original condition in all respects. *Provenance:* Joe French Collection 1800-2200

336. Miniature red-headed woodpecker by A. E. Crowell, E. Harwich, Mass. In XOC with a minor scrape to one side of beak. Base has Crowell's impressed rectangular brand and a "7" written in pencil. 1800-2200

337. Early miniature scarlet tanager by A. E. Crowell, E. Harwich, Mass. Minor paint scrape beak tip, small chip from tail and minor paint scrapes to tail area. Base has "15" in ink and "Scarlet Tanager" written in pencil. 1400-1800

338. Miniature catbird by A. E. Crowell, E. Harwich, Mass. In XOC. Base has Crowell's impressed rectangular brand and "20" written in pencil. 1800-2200

339. Miniature thrasher by A. E. Crowell, E. Harwich, Mass. In XOC with Crowell's impressed rectangular brand. 1800-2200

340. Early and exceptional plump miniature green-winged teal drake by A.E. Crowell, E. Harwich, Mass. In XOC. Base has Crowell's early circular ink stamp marked on the bottom and written in pencil "Green Teal Male". X collection of a south shore Mass. collector. 2750-3500

341. Early and tiny (less than 4") red head drake decoy paperweight by Frank Adams, W. Tisbury, Martha's Vineyard, MA. In old dry original paint with minor flaking. X collection of a south shore Mass. collector. 500-750

342. Early (6 1/2") sleek mallard paperweight by Frank Adams, W. Tisbury, MA. In XOP protected by a light coat of varnish, head may have been reglued, and minor paint loss to end of tail. X collection of a south shore Mass. collector. 500-1000



340-341-342



A.E. Crowell

THREE EXCEPTIONAL “MANTLE” SHOREBIRDS BY AMERICA’S MASTER CARVER AND PAINTER, ANTHONY ELMER CROWELL OF EAST HARWICH, MASSACHUSETTS.

343. **Rare early yellowlegs “walker”.** A “mantle bird” by Anthony Elmer Crowell, East Harwich, Mass. This carving is in excellent original paint and structural condition. The back toe, ¼ inch, has been professionally replaced by Steven Weaver. Crowell made his toes with putty. This is the finest intricately painted greater yellowlegs by Crowell that we have ever seen. The surface has a warm, mellow, patina. This stunning piece has a carved “rock” base with Crowell’s oval brand burned in the bottom.

20,000-30,000

343

344. **Exceptional jack snipe “mantle bird” by A. Elmer Crowell, of East Harwich, Mass.** This bird is in excellent condition and has mint finely blended paint on a carved “rock” base. Crowell’s impressed rectangular brand and his signature “A.E. Crowell, Cape Cod” are on the bottom of the base.

25,000-35,000

345. **“Peep” sandpiper, a “mantle bird” by A. E. Crowell, E. Harwich, MA.** In XOC. This bird has a carved shell base with Crowell’s impressed rectangular brand and his signature in ink “A.E. Crowell, Cape Cod, 1941” Soft, mellow, wet on wet feather blending.

12,000-14,000



344



345



Arnold Melbye

ARNOLD MELBYE OF BASS RIVER, CAPE COD, WAS A HUNTER, AMATUER NATURALIST, AND ARTIST. ENCOURAGED BY HIS CONTACT WITH ELMER CROWELL, HE DEVELOPED HIS CARVING AND PAINTING SKILLS. HIS WORK IS NOW IN MANY COLLECTIONS HERE AND ABROAD. IT'S COMBINATION OF ACCURACY AND VITALITY IS REMARKABLE.



345A. Stunning lifesize bluejay with a carved acorn in his bill by Arnold Melbye of Bass River, Cape Cod, MA. In excellent original condition in all respects. Signed with a lightly carved MELBYE on under side of bird. 3000-4000

345B. Pair of lifesize goldfinches by Arnold Melbye mounted on driftwood. Male has the head turned about 60 degrees left and the calling/singing female has her wings outstretched. In excellent original condition in all respects. Signed A. MELBYE in pencil on the underside of each bird. 3500-5500



346. Outstanding swimming red-breasted merganser ca. early 1900's by A.E. Crowell, of E. Harwich, MA. In XOC with light gunning wear, minor professional restoration to a shallow tail chip 1/4 inch by 1/4 inch and 1/16 inch deep. Hot branded with early oval Crowell mark. Purchased with the next lot at a Bourne decoy auction in 1973.

25,000-35,000





347

347. **Rare merganser hen decoy ca. early 1900's by A.E. Crowell, East Harwich, MA.** with the head pulled back and turned as if getting ready to preen or perhaps dive. In XOC in all respects. Hot branded with the oval Crowell branding iron. This exceptional decoy was purchased at a Bourne decoy auction in 1973.

25,000-35,000



348

348. **Outstanding Canada goose by A. E. Crowell, East Harwich, MA.** In excellent original paint and condition with the "minor" exception of a professional tail chip repair to the left tail edge. Very little surface wear. Narrow circular mark on lower right side, age check along bottom. Hot branded with early oval Crowell mark.

15,000-25,000

349. **Rare early self-bailing brant decoy by Joseph Lincoln.** It is in excellent condition with bold Lincoln paint. A few tiny worn areas have been darkened otherwise original. There are inconsequential rubs to small areas of the body. An outstanding example. This is the very last one available from an early Nantucket gunning rig that was ordered directly from Joseph Lincoln.

15,000-25,000

349A. **H. Keyes Chadwick turned head red breasted merganser hen decoy.** In excellent original condition. A few minor surface rubs and three drips of green paint on the back that could be removed. A ½ inch x ½ inch paint scape on one side touched up by Steve Weaver. Red glass eyes, circular inset weight and a typical narrow check on the bottom. This bird was probably never floated. Decoys by this maker in this condition are getting nearly impossible to find. 9000-12000



349



349A



350

351



352

352. BOLDLY CARVED oversized black duck decoy masterpiece ca. 1900 with dished-down upper wing detail by Joe Lincoln, Accord, MA. Lincoln's best black duck head style in this cataloger's humble opinion. Typical wide check on the bottom along with the "Q" brand for the "Quandy Collection". Glass eyes, a few shot strikes on the face. Body has old in use paint with original. Paint on the head is all original. Absolutely Lincoln's best form in a black duck and some feel possibly the finest design for a black duck by any carver. 5000-7500

350. Black duck decoy by A. E. Crowell, East Harwich, MA. In XOC with nice subtle feathering on the body. Remnants of the famous "Iver Johnson Supreme" ink stamp on the bottom. Some green paint visible along the lower edges and bottom from a triangle rigging. Struck with a few shot. Wonderful form and patina. 3000-5000

351. RARE Elegant widgeon drake decoy ca. 1900 by Joseph Lincoln, Accord, MA with "C. N. Smith" branded on the bottom along with four poured circular inlet weights. In good OP with some nicely done in use touch up. Struck by a few shot. Wonderful form. See "Joseph Lincoln" by Cap Vinal, pg. 55 for a similar example. 5000-7500
Provenance: Joe French Collection.

353. Black duck with head turned slightly to the right by Henry Oakes, Gloucester, MA. Oakes was a friend and gunning companion of Charles Hart and their decoys are very similar. Paint is excellent and original with great detail to the bill and head and an excellent example of match stick painting on the body. A few checks exist on the back and breast. Few rubs to tail tip and an area of roughness on left cheek. Rare example by this North Shore carver. 1500-2500



353

353A. Redhead drake by Keyes Chadwick. Nicely blended OP with patina and has a few minor dings and rubs. Check in back filled by Steve Weaver. Great form. This is Chadwick's high-backed short-bodied style. 5000-7000



353A



354. Rare solid body black duck in immature plumage by Charles Hart, Gloucester, MA in XOC. Few tight grain line age checks in the wood on the body, carved wing detail and glass eyes. Unused and unrigged condition. 4500-6500



355. Green-winged teal decoy ca. 1925-1950, by Charles Hart, Gloucester, MA. In fine original paint covered with a protective coat of sealer. Minor chip off the tip of the bill. 3500-5500

356. Classic Canada goose ca early 1900's by Joseph Lincoln, Accord, MA. Bird has large areas of original paint which are dry and well worn. In use touch up to the white. Some tiny "varnish" drops are present on head. Large knot shows on left side and small tight checks in bottom but overall bird is in excellent structural condition. Branded "Bradford" on the bottom. This rig was purchased by a descendant of our first Massachusetts governor directly from Joseph Lincoln. Used on a salt marsh near Plymouth harbor adjacent to the Bradford estate. Original feather paint on lower sides. X collection of an early south shore Massachusetts collector. 2000-3000

357. Canada goose decoy by Joseph Lincoln, Accord, MA. In excellent structural condition with beautifully restored paint in the original style by Paul Fortin. Homer Lawrence brand on the bottom. Lawrence was a waterfowl hunter and a very talented early decoy maker and bird carver from Connecticut. Great classic form. 2000-3000

358. Rare and very large "loomer" slat goose ca 1890-1910, by Joseph Whiting Lincoln of Accord, MA. Approximately 38 inches long. In excellent structural condition. 800-1200

359. Early, very large, solid body Canada goose decoy ca. early 1900's from Hingham, MA. Decoy from the Mackey collection and labeled as being carved by Clarence Bailey. Some original with mostly old gunning paint with usual in use touch up to white. Tail appears to be inlet into body. Large open age check in bottom. A nice early decoy. X collection of an early south shore Massachusetts collector. 1200-1800





360



361



362(PR)

360. Early Canada goose decoy by Joe Lincoln, Accord, Ma. In old gunning repaint. Head loose and poorly reattached with numerous finish nails. Minor tail chips and two small body checks may have been repaired at the time of construction. Numerous "nail head type" dents in top of body. See "Decoys of the Atlantic Flyway" by Starr pg 151, fig. 73 for similar decoy from this early period. X collection of an early south shore Massachusetts collector. 750-1250

361. Rare and early solid body goldeneye hen decoy with painted eyes by "Captain Goodspeed", Duxbury, MA, ca 1890. In good OP with moderate wear and some wood showing on the sides. Possible t/u to the white on the lower sides. Struck by shot, very narrow check extending from the breast along the side of the neck and down the back. Rare example. 800-1200



363

362. Cape Cod goldeneye pair ca. 1940's in excellent original paint with carved wings and glass eyes by Luther Nickerson of Cotuit, Mass. From the family shooting rig. Used by Grandson Howard Nickerson up until the last decade or two. Nickerson worked as a boat builder for the Crosby Boat Works in Osterville, Mass. and made rigs of decoys for many local hunters for several decades. 1000-1500

363. A.E. Crowell black duck ca. 1920's with head turned slightly to the right. Paint is excellent and original with professional restoration to the lower neck by Steven Weaver. Minor rubs to tip of tail and bill as well as high spot on left side. Bears the small rectangular "A.E. Crowell - Maker—stamp". 3000-4000



364

364. Large oversized solid construction black duck decoy ca. 1900 by George Boyd of Seabrook, NH. Head is turned, fitted with taxidermy quality glass eyes. In original paint with some possible areas of touchup at the rear of head. Open check on left side of body, neck crack and large chips off the edges of the tail. X collection of an early south shore Massachusetts collector. 1500-2000



365. Rare oversized black duck decoy ca. 1900 by Joseph Lincoln of Accord, Mass. Structurally sound. Paint nicely restored in the original style. Indecipherable small brand on bottom. 1000-2000

366. Early hollow green-winged teal drake decoy with glass eyes in a contented pose by noted folk carver Mark McNair. Raised carved wing tips and wonderful paint design. "McNair" incised and "Green Wing Teal male, 1986" is written in paint on the bottom. 1200-1800

367. Beautiful hollow carved white wing scoter decoy by David B. Ward of Essex, CT. In mint original condition. Great bill and wing detail carving. "DBW" and "93" stamped on bottom. One of this talented makers best efforts. 800-1200

367A. Gunning black duck decoy by the late Phil Fairbank of Old Saybrook, CT. ca 1940's. Good original paint with exceptional detail on the head. Glass eyes, check in the neck. Mr. Fairbank was a contemporary and hunting partner of Ted Mulliken, Shang Wheeler, the Harris's, and "Shang" Wheeler. 800-1200

367B. Solid body bluebill drake by H. Keyes Chadwick, Oak Bluffs, Martha's Vineyard, MA in XOC. Slightly turned head, glass eyes and typical circular inset weight. Few surface rubs but virtually unused.

368. White-winged scoter shadow decoy by Joe Lincoln, Accord, MA. Part of a larger "nesting set" of silhouettes used to decoy these coastal birds. Good OP with probable in use strengthening to white areas. Age checks in neck and under left tail. Lightly hit by shot. X collection of an early south shore Massachusetts collector. 250-450

368A. Decoy from Martha's Vineyard, MA. Appears to be a widgeon form which is painted white. Section of tail tip replaced and lower half of bill missing. May have been used as a gull in the rig. 300-500

369. Pair of redhead decoys by Madison Mitchell, Havre de Grace, MD in Excellent and original condition. Tiny rub to the top of the head on the drake. Signed in electric pencil on the bottoms and dated "1982". 800-1200





370. **Early bluebill drake by Madison Mitchell.** Decoy has been gunned over and is in "out of rig" condition. Paint shows light even wear. There are a few tight checks in the breast area. Small separation at neck joint and the nails at top of head and base of neck are visible. Bottom has large grey painted letter "H". 500-1000

371. **Widgeon drake by Madison Mitchell.** Excellent original paint. Small dent on left side with tight checks visible in bottom and on neck of bird. Small old tail chip may have been reglued. 500-1000

372. **Early pintail drake, probably 40's or 50's, by Madison Mitchell.** Very lightweight and probably carved from dense balsa or similar wood. Excellent structural condition with minor blunting or "puppy chew" to tail tip. Paint is well worn with only outlines of the original pattern visible on right side. An old gunning veteran. 500-1000

373. **Rare flat bottom pintail hen by Madison Mitchell.** Thick patinated original paint which is in excellent condition. Excellent structural condition except for an inconsequential dent on left speculum. 800-1200

374. **Early fresh water coot by Madison Mitchell.** Gunning rubs to paint on top of head and tip of tail. Red "button" on top of bill missing. Structurally excellent except for an extremely small tight neck check that is practically invisible. 500-1000

374A. **Oversized bluebill drake by Madison Mitchell from the "5 Rock pile" painted on the bottom.** Beautifully carved and proportioned with the head turned slightly to the right. Excellent original paint with minimal shelf rubs. Inconsequential tight check on bottom and grain lines visible on both sides of bird. 500-750



374B. **Oversized Canada goose by Madison Mitchell.** Head in slightly forward swimming pose. Excellent original structural condition. Paint is excellent with only minimal faint rubs to top of head and 1 or 2 other tiny scuffs to body. 400-600





375



376



377



378

375. Mason Premier redhead hen with good original paint. Strong paint swirls on back. Shot marks. This is the exact decoy pictured on page 177, third plate down, in Luckey & Lewis.

900-1100

Provenance: Pitt collection

Literature: Collecting Antique Bird Decoys and Duck Calls by Luckey & Lewis

376. Mason Factory glass eye bluebill hen in good original paint with in use gunning wear.

500-750

Provenance: Pitt collection

377. Mason Factory Detroit grade glass eye bluebill drake in excellent original paint. Some light wear and minor surface discoloration.

800-1200

Provenance: Pitt collection

378. Mason Factory Detroit grade glass eye bluebill drake in excellent original condition (XOC).

800-1200

Provenance: Pitt collection

379. Mason Factory Detroit grade glass eye bluebill hen in very fine original condition with a little in use wear.

600-900

Provenance: Pitt collection

380. Hays Factory glass eye mallard hen. In very fine original condition with little in use wear.

800-1200

Provenance: Pitt collection

381. Mason Factory painted eye mallard drake in original paint with wear. Neck filler missing.

300-500

Provenance: Pitt collection

382. Mason Factory painted eye canvasback drake. In very good original paint with in use wear. Some neck filler missing.

400-600

Provenance: Pitt collection



379



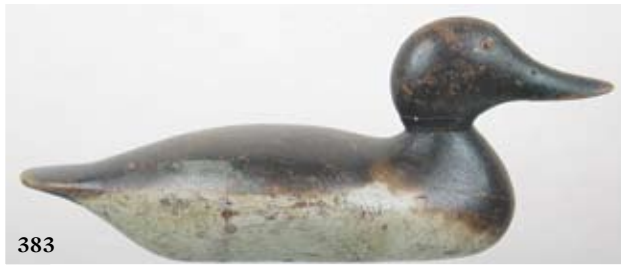
380



381



382



383



384



385



386

383. Hays Factory glass eye canvasback hen. In good original paint with in use wear. Struck by a few shot. Couple tight checks.

600-900

Provenance: Pitt collection

384. Mason Factory Detroit grade glass eye bluebill. Possibly repainted head in the manner of a drake. The body looks like a hen.

300-500

Provenance: Pitt collection

385. Mason Factory Detroit grade glass eye bluebill hen. A little filler missing in the neck seam but otherwise in very fine original paint.

600-900

Provenance: Pitt collection

386. Hays glass eye mallard drake in very good original paint. Some filler missing in the neck seam.

400-600

Provenance: Pitt collection

387. RARE raised-wing model canvasback drake by Charles Perdew of Henry, Illinois. In virtually mint condition with two very small rubs on the right and left edge of the tail. Glass eyes. Appears unused. The bottom is fitted with the Perdew strip lead weight with Henry, 3 raised dots, Perdew, 3 more raised dots, then followed with Ill. One like this example, without raised wings, is pictured on page 156 in "Top of the Line Hunting Collectibles" by Donna Tonelli. Outstanding paint with very detailed comb painting between the raised wings.

Open Estimate

Provenance: Pitt collection

388. Blue-winged teal drake ca late 1800's by Charles Schoenheider of Peoria, Illinois. One coat of blue wing patch overpaint has been removed professionally by Ken Delong. The rest is original but by another hand as Schoenheider often had others paint his decoys such as Charles Franks of Peoria. See example on page 156 of "Top Of The Line Hunting Collectibles".

Open Estimate

Provenance: Pitt collection

Literature: Top Of The Line Hunting Collectibles



387



388



389. Blue-winged teal hen ca. late 1800's by Charles Schoenheider. This is the rig mate to the drake in lot 388. One coat of blue wing patch overpaint has been removed by Ken DeLong. The rest is original paint but by another hand as is the decoy in lot 388. Both teal decoys are excellent structurally.

Open Estimate

Provenance: Pitt collection

Literature: Top Of The Line Hunting Collectibles

389A. Mallard drake by Charles Perdew with finely blended paint by Edna Perdew. In fine all original paint with in use gunning rubs and marks. Purchased by the consigner about 1980 from Alan Haid. See top of page 156 in "Top of the Line Hunting Collectibles by Donna Tonelli for a similar period decoy with paint by Edna Perdew."

12,000-18,000

Provenance: Alexander Collection

Literature: Top of the Line Hunting Collectibles

390. Turned head mallard drake decoy branded "Heck Whittington, Oglesby, Ill, 1981" on the bottom. Minor discoloration to paint on right side. A few tiny shelf rubs to the top of head. In XOC, never rigged or used. 1000-1500

391. Swimming mallard drake decoy with slightly turned head from possibly from the Michigan or Wisconsin area. Deeply carved wing detail, good OP with a few rubs to head and otherwise light wear. Tight age check in head and right side of the body. Visible $\frac{3}{4}$ " knot on back. 500-1000

392. Delicate blue-winged teal hen decoy. Bold OP with deeply carved wing detail and on the mid back. Old tight check in upper neck. Interesting weight/keel on the bottom. In excellent original paint with some in use wear. 800-1200



393-394-395



396-397

398-399-400



401-402

393. Miniature preening pintail hen with split tail in XOC. Signed "Pintail Hen, James Lapham, Dennisport, Mass" in ink on the bottom of the base. 600-800

394. Miniature goldeneye hen with split tail in XOC. Signed "Golden Eye Hen, James Lapham, Dennisport, Mass" in ink on the bottom of the base. 500-750

395. Miniature reaching Steller's eider hen with split tail in XOC. Signed "Steller's Eider Hen, James Lapham, Dennisport, Mass" in ink on the bottom of the base. 600-800

396. Larger miniature shoveler drake with carved raised wing tips in XOC. Signed "Shoveler Drake, James Lapham, Dennisport, Mass" in ink on the bottom of the base. 600-800

397. Larger bufflehead drake by James Lapham of Dennisport, Mass. Signed on the bottom by Lapham. 600-800

398. Half size decoy model mallard drake by Lapham in XOC. Signed "Mallard Drake, James Lapham", in ink on the bottom. 500-750

399. Miniature goldeneye drake by Lapham in XOC. Signed "Golden Eye Drake, James Lapham, Dennisport, Mass." in ink on the bottom. 500-750

400. Miniature canvasback drake by Lapham in XOC. Signed "Canvasback Drake, James Lapham, Dennisport, Mass", in ink on the bottom of the base. 500-750

401. Half size common tern with carved wing outlines, long crossed wing tips and detailed paint in XOC. Signed "Common Tern, James Lapham, Dennisport, Mass" in ink on the bottom of the base. 500-750

402. Half size standing red breasted merganser drake with raised wings and detailed carving on the crest in XOC. Signed "Red Breasted Merganser Drake, James Lapham, Dennisport, Mass" in ink on the bottom of the circular base. 500-750

403. Larger miniature American eider drake with split tail and wing tip detail in XOC. Signed "American Eider Drake, James Lapham, Dennisport, Mass" in ink on the bottom of the base. 600-900

404. Miniature running redbreasted merganser drake with split tail and carved wing tips in XOC. Signed "Red Breasted Merganser Drake, James Lapham, Dennisport, Mass" in ink on the bottom of the base. 500-750

405. Miniature ring neck drake with split tail in XOC. Signed "Ring Neck Drake, James Lapham, Dennisport, Mass" in ink on the bottom of the base. 500-750

403-404-405



406(PR)-407



409-409A



409A. Mini drumming cock grouse on a branch stub by Russ Burr, Hingham, Mass. Fine OP with a few very tiny rubs to the edge of the tail. Excellent structural condition. Russ Burr ink stamp is on bottom. 800-1200

406. **Pair of miniature wood ducks by Lapham.** The wood duck drake is in XOC. Nice split wing and tail detail. Signed "Wood Duck Drake, James Lapham, Dennisport, Mass", in ink on the bottom of the base. The miniature wood duck hen is in XOC. Signed "Wood Duck Hen, James Lapham, Dennisport, Mass", in ink on the bottom of base. 1000-1500

407. **Miniature black duck by Lapham in XOC.** Signed "Black Duck Drake, James Lapham, Dennisport, Mass", in ink on the bottom of the base. 500-750

408. **RARE ½ lifesize ruffed grouse drumming on a stump ca. early to mid 1900's by Russell Pratt Burr of Hingham, Massachusetts.** Glass eyes. If there was a signature it is worn off. The only standing game bird that we have ever seen of this large size by this carver. In excellent original condition in all respects. 1200-1800

409. **Excellent pair of miniature black ducks mounted on burl by Russ Burr, Hingham, Mass.** The hen is on the nest with the drake looking down. Finely carved wings and tails. XOP and condition. Stamped twice on bottom with Burr's stamp. 2000-2500

410. **Solid body glass eye black duck decoy possibly by Ben Schmidt of Detroit, MI.** Bold wing carving and stamped feathering. Good OP with a few minor paint chips off the surface. There is a glue repair to lower portion of bill. 500-1000

411. **Rare hollow wood duck hen by Benjamin Schmidt of Detroit, MI.** Typical bold carving with raised wings and stamped feathering. Strong OP with little wear. Never rigged or used. 1500-2500

412. **Folky hooded merganser drake with carved eyes.** Probably from the Michigan area or Canada.. Carved raised wings. XOC, never rigged or used. 750-1250





413. Hollow bluebill drake with glass eyes probably from Michigan with a lowhead similar to those made by Quillen or Cris Smith in old gunning paint. Unusual two piece head construction. Old repair to a bill check. Very folksy form. 500-1000



414. Hollow bluebill drake decoy from MI area. Decoy is hollowed from below and has well executed wing and shoulder carving. Excellent OP with nice comb painting on the back and sides. Possibly by Snow or another who made decoys in the Schmidt manner. 500-1000



415. Solid body bluebill drake decoy with painted eyes from the Alexandria Bay, NY. Appears to be in good OP with very nice grain painting on the back of the body. Light wear overall and a scrape on the left bill edge. Early jelly jar label on the bottom reads "R. Hatis Scaup, S35". 500-750

416. Solid body redhead drake decoy by Chauncey Wheeler, Alexandria Bay, NY. In good old in use paint with a few shot scars. Wear to the edges of the tail and a small sliver of wood from the left side of the bill. Branded "A. Y." on the bottom with the typical egg shaped weight. 500-750

417. Solid body glass eye redhead drake decoy from Canada, probably Quebec. Slightly turned head. XOP with light in use wear. Branded "B.J.L." on the bottom. 150-250

418. Wonderful example of a common loon decoy from the last quarter of the 20th century. Crazing on the surface, line check on the back of the head, filled check in the bottom done when the bird was made. Maker is Andre Brosseau from Lacolle, Quebec. 500-750

419. Small grebe decoy with glass eyes possibly used as a confidence decoy. Paint is in excellent condition. Head turned slightly to the right, glass eyes. 250-450

420. Folksy high head bluebill with glass eyes from the Michigan St. Clair Flats or possibly Canada. Strong appealing OP is crazed and lightly blistered as if from exposure to heat but retains well done scratching and combing patterns. Traces of an old indecipherable label on bottom. 300-500





421



421A



421B



422

421. Hollow turned head surf scoter decoy with glass eyes and deep keel, branded "F. Jennings", first name Forest. Great detailed carving on the head and bill. XOC with a few surface rubs. Unrigged and unused. 300-500

421A. Bluebill drake decoy by Ira Hudson, Chincoteague, VA with great "football" shaped body. OP by Hudson but some a second coat with part of the upper body original. Head is slightly loose otherwise structurally good condition. 800-1200

Provenance: Purnell collection, X. Harmon Collection, X Early So Shore Collection.

421B. Elegant Canada goose decoy by Charles Birch, Willis Wharf, Va. Old working paint with some original. Neck reseated and professionally touched up by Bob White. Chip in tail reglued. 26" long. X. Roy Bull collection. 1500-2500

422. Early Ira Hudson canvasback drake decoy. His Shourds or New Jersey shore model Structurally good, working paint with some by Hudson. X. Clark Reed Collection. 500-1000

423. Early solid body Ira Hudson bluebill drake decoy with tack eyes in nice original paint with light to moderate gunning wear. Small amount of neck filler missing. Nice fat and chunky example by this sought after maker. X. Clark Reed Collection. 1000-1500

424. Large and fine solid body black duck decoy by Ira Hudson, Chincoteague, Va. Paint may be a second coat by Hudson with areas of flaking. Neck and bottom check. X Early So. Shore, MA Collection. 500-1000

425. Hooded merganser drake decoy attributed to Doug Jester, Chincoteague, VA. In XOP and good condition. 12 ½" long. 800-1200
Provenance: Early So Shore, MA. Collection.

426. High head Maryland canvasback drake attributed to Taylor Boyd. Good old paint with original. There are a few cat chews on the bill tip and a small amount of filler in a dent on the right side of the bottom. 15 ½" long. 800-1200
Provenance: Early So. Shore, MA. Collection.



423



424



425



426



427



428



429



430



431

427. Very early Chesapeake Bay battery canvasback drake decoy ca late 1800's with vestiges of OP worn to bear wood on the top of the body and head. Early original iron keel with the "ARROW E CO." brand on bottom. Head loose with fairly large chip missing at left neck. A well used veteran.

300-500

428. Very old, interesting, battery canvasback drake decoy from the upper Chesapeake Bay. Iron keel. Exceptionally well carved bill with a chip on underside. Old neck check repaired. Numerous layers of old gunning paint with heavy crazing and flaking.

300-500

429. Chesapeake Bay canvasback drake decoy good working paint with light wear. Tight check in neck. Illegible brand on bottom.

200-400

430. Chesapeake Bay canvasback hen decoy in heavy working overpaint. Two tight line age checks in bottom. Illegible brand on bottom.

200-400

431. Swimming bluebill hen decoy with tack eye. Paint is flaking to wood over much of decoy. Shot scar to right side of head. "J.S. Jr." brand on the bottom.

200-400



432

432. (26#) Cast iron "battery" wing duck (possible a canvasback). Starr collection stamp on bottom. Surface rust and pitting. Nice form.

500-1000

433. Outstanding swimming red-breasted merganser ca 1915-1918 with carved tail feathers by A.E. Crowell of E. Harwich, MA. Structurally excellent. A dark wash has been professionally removed to the original paint which shows moderate wear. Hot branded with Crowell's oval mark.

15,000-20,000

434. Rare oversized black duck decoy by A. E. Crowell, East Harwich, MA. In XOP with in use touch-up on the lower sides. Turned head, oval brand under a large sheet lead weight on the bottom. Typical thin age checks (3 or 4) on the body and a deeper check on the bottom with a sliver of wood missing. Neck seam separating due to wood shrinkage. Glass eyes. "B.R.R. Gun Club" Scratched into the lower side on the left.

4000-6000



433



Duck Hunter



434



435



438



436



437



439



440

435. Oversize black duck decoy with a Mason Factory Premier Grade body and a Joseph Lincoln head. In restored paint with light wear. 300-500

436. Redhead drake ca late 1800's with deep wing shaping by James Look of West Tisbury, Martha's Vineyard, MA. Head has heavy wear and bare wood in places. Body paint is worn and crazed original. Tiny tail chip. Struck by a few shot. 600-800

437. Extremely rare early widgeon hen decoy ca 1900 or earlier by Max Chamberlain, Oak Bluffs, Martha's Vineyard, MA. Worn and weathered paint with some dry rot to the left side of the head and a deep check in the left side of the body. Unusual rigging and weight. Old collection tag reads "6. Chamberlain". Glass eyes, carved wing and feather outlines. See "Martha's Vineyard Decoys" by Murphy Pg 59. 800-1000

438. Black duck by Charles Bayer, Mystic River, CT., ca 1920. Head loose and neck seam is visible. Very worn original paint, wonderful form. X Early So Shore, MA Collection. 200-400

439. Merganser decoy by George Huey, Friendship, ME. Weather beaten old veteran that had been repainted as a gull and is now weathered to a silver driftwood color. Old nail repair to bill tip. Outstanding sculptural form which is Huey's trademark. 200-400

440. Rare hollow sleeping black duck with a canvas covered bottom from ME. Well carved wings, ice groove on the back and an original keel. Unusual pose and construction technique. Slightly worn OP except for a sizable area of paint loss on the right side of the body. Very appealing form. Possibly made by Trefetheren or Scribner. 1000-1500

441. Pair of hollow blue-winged teal decoys with glass eyes and turned heads by Virgil Lashbrook, Pekin, IL in XOC. Signed "Virgil Lashbrook, 11/14/90" on the bottom in ink. No weight or rigging. 1800-2200

441A. Pair of hollow bluebill decoys by George Soule of Freeport, Maine. Soule made the decoys for L. L. Bean that they sold for many years. XOC, Glass eyes, turned heads. 1500-2500



441(PR)



441A(PR)



442



443



444



445

442. Mint Illinois River mallard drake decoy by Cline McAlpine, Chicago, with head turned slightly to left. Paint appears to be original and well preserved. Excellent structural condition. There is illegible lettering on the weight. 1000-1500

Provenance: Pitt Collection

443. Bold chunky hollow bufflehead drake decoy with glass eyes and great comb painting by Wendall B. Sheerman and painted by Charlie Moore. See "Decoys and Decoy Carvers of Illinois" by Parmalee and Loomis for reference to these makers. XOC with light shelf wear. Maker and painter identified on the bottom. 500-750

444. Blue wing teal drake by A.T. Beary, Gonzales, LA ca 1970 with "A.T.B." branded on bottom. XOC with one light rub to paint on head. 300-500

445. Hollow Delaware River mallard hen with carved and raised wings. In XOC. 300-500

446. Attractive sleeping black duck decoy with heavily textured surface by an unknown maker probably from MI. Coat of sealer. Touch up to top of head. Original keel. *Provenance:* Pitt Collection 300-500

447. Rare Mason Factory Challenge Grade merganser drake in mostly OP. Coat of over-paint professionally removed. Very tiny chip at the edge of the tail and bottom of the crest. Struck by a few shot. "E.J.K." branded on the bottom. 1200-1800

448. Mason Factory Challenge grade mallard drake in original paint and in use overpaint. There is a lower left body check that runs along the left side. There is a coat of sealer on the entire surface. 600-900

449. Solid body Mason Factory Challenge Grade black duck decoy in mostly OP with average in use wear, touch up on the face, bill and under the tail and a rub to the top of the tail. Age check on the bottom with a wood repair and tacks to hold the wood in place. Clear "Challenge" stamp on the bottom. Weight removed 800-900



446



447



448



449



450



451



452



453

450. Mason Factory Detroit grade glass eye goldeneye drake in original paint with some very fine in use repainting. Structurally excellent. 200-400

451. Mason painted eye bluebill drake. Glass eyes are later additions. Largely OP with some small areas of touchup. Structurally very good. 300-500

452. Mason Factory Premier Grade Green Winged Teal Drake in good structural condition with restored paint in the original style. Seam line visible, few flakes from the side of the body near the neck. 500-1000

453. Mason Factory Standard Grade glass eye bluebill drake decoy with OP on the back. Touch up on the left side of the head and the black areas of the breast and tail. Struck by a few shot on the left side, three narrow checks on the body, neck filler replaced, bill repair. 500-750

454. Mason Factory Detroit grade blue-winged teal hen in moderately worn OP with very tiny checks in back. Most of neck filler missing and two shot scars on left bill. 1200-1800

455. Wildfowler green-winged teal drake decoy made as a presentation item. XOC. Has a coat of sealer with some yellowing. Glass eyes. 500-1000

456. Wildfowler blue-winged teal drake decoy made as a presentation piece. XOC with a coat of sealer that has yellowed. 500-1000

457. Freshwater coot attributed to the Pratt decoy factory. Original paint with possibly a little in use touch up. One glass eye missing. Tiny checks to back and a nail repair to neck. 250-450



454



455



456



457



457A



457C

THE PROCEEDS FROM THE CARL W. ALTHENS DECOY COLLECTION, A NUMBER OF WHICH ARE BELOW, WILL BE DONATED TO THE HEMLOCK HILLS WATERFOWL PRESERVE IN ELLICOTTEVILLE, NY.

457A. Classic, early, slope breasted mallard drake from the D. B. Day rig. Head turned to the right. Fine, lightly crazed original paint shows light wear but retains classic Mason swirling. A few very tiny areas may have been darkened years ago in the breast area. A couple small dabs of silver touch-up has been removed from the speculum and there has been a professional tail chip repair. Wonderful form with a sharply turned head. A highly desirable example of an early Mason from A famous Ohio gunning rig. 8000-12000

Provenance: Althans Collection

457B. Mason Factory Premier widgeon drake in excellent structural condition. In original paint with a wash and some touch-up added. 1500-2500



457E



457B



457D

457C. Mason Factory Premier black duck in excellent original condition with strongly swirled vibrant paint. Tight back check. 5500-6500

457D. Canvasback drake by the Ward brothers. Head turned slightly to the left. Tiny tail chip. There are a few tiny checks to the head. Keel removed. Completely repainted by the Ward brothers. "WARD BROS, CRISFIELD, MD - 1948" written on bottom as well as the signatures; "Steve Ward" and "Lem Ward". X R. H Richardson collection.

Provenance: Althans Collection

1200-1800

457E. Rare gadwall drake by John Kalash and Jim Foote. Head turned approximately 45 degrees to the left. Beautifully detailed carving with emphasis on the split. Raised and separated wings and a finely carved tail and bill. Strong original paint showcases the maker's proficiency with combing and blending techniques. Signed on bottom "John Kalash".

800-1200

457F. Elegant gunning swan decoy by John Vickers, Cambridge, Maryland, C1940 (information written on bottom). Fine OP with very minor gunning wear. Tight crack in neck and a small separation where the neck joins the body. Bill inlet into head. Keel weight removed. Swan decoys that were actually intended for hunting are very rare and this example has survived in a remarkable state of preservation.

Provenance: Althans Collection

3500-5500



457F



457G. Canada goose decoy in old gunning repaint. Old collector tag on bottom suggests that the bird was made by "CAPT. I. H. FRENCH, RUMBLEY, MD." Usual old crack and checks to neck and body. It looks more like the work of the Dye or Holly family to the catalogers. 500-1000
Provenance: Althans Collection

457H. Rare, cork body black duck by Madison Mitchell. Much of the original body paint worn to cork with some lighter wear to head. Light pencil signature on bottom reads "Madison Mitchell". An RARE form by this famous maker. 300-500
Provenance: Althans Collection

457I. Turned head whistler drake by Robert J Miller. Well carved bill with ice groove and lightly carved wings. Very good OP with a few small rubs to head and back. Signed on bottom "Robert J. Miller" with two conjoined "RM" stamps. Keel removed. 300-600
Provenance: Althans Collection

457J. Canvasback drake by Madison Mitchell with head turned very slightly to left. Very good OP (original paint) with a few in use dents and rubs to painted surface. Small tight crack on right side of neck and a larger crack on right underside of decoy that extends from tail to breast. Ballast weight removed. Signed on bottom "Maker Madison Mitchell – Havre de Grace, Md.". Hot brand "GWK" also on bottom. 300-500
Provenance: Althans Collection

457K. Redhead drake by Madison Mitchell. Fine OP (original paint) with light gunning wear and a "1 dot" of yellow paint on bottom near keel, presumably a rig marking. Old tight check on right side of neck. Bottom has pencil signature "Madison Mitchell – Havre de Grace, Md." 300-500
Provenance: Althans Collection

457L. Michigan bobtail canvasback drake. Very nicely carved head with great bill detail. Very good OP with some moderate, in use gunning wear. Slight roughness to end of bill otherwise excellent structural condition with original keel. Painted "JVR" on bottom. 200-400
Provenance: Althans Collection

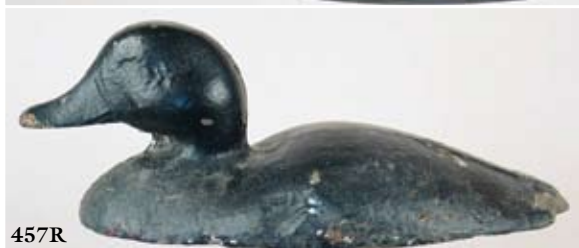
457M. Sleeping canvasback drake from Michigan. Rough cork body with well carved head, an inlet tail, and a bottom board. In original paint with light wear. 150-300
Provenance: Althans Collection

457N. Pair of Canvasback by Tom Parsons, Oxford, Md. Light to moderately worn paint appears to be the original and is executed very much in the Wildfowler style. Tight cracks and checks in the bodies of both birds. 400-600
Provenance: Althans Collection





457O



457R

457O. **Black duck by Dave “Umbrella” Watson, Chincoteague, Va.** Nicely carved wing and tail detail. Paint is a combination of old original paint with in use touch up. Small tail chip and head worn to wood in areas. Bill has an in use replacement or was made in two pieces. Retains strong “GOOSEVILLE GUN CLUB” hot brand on bottom.

Provenance: Althans Collection

1500-2500

457P. **Very rare cast iron brant wing duck from the Chesapeake bay.** Head forward in a swimming posture. Heavily rusted and chipping from years of exposure to salt water. Actual wing ducks are not common and brant are among the rarest.

400-600

Provenance: Althans Collection

457Q. **Cast iron wing duck from the Chesapeake bay.** Probably intended as a canvasback. Upswept tail with some eye and bill detail. Lightly rusted surface with a small hole in tail to secure the decoy.

400-600

Provenance: Althans Collection

457R. **Cast iron wing duck from the Chesapeake bay.** Probably intended as a redhead or a bluebill. Sizable tail chip and bird has been overpainted black.

300-500

Provenance: Althans Collection



457S



457Q



457P

457S. **Cast iron wing duck from the Chesapeake bay.** Probably intended as a redhead or a bluebill. Thick body style makes the decoy very heavy or its size. Faint eye and bill detail. Mildly rusted surface with a small hole in tail to secure the decoy.

Provenance: Althans Collection

400-600

457T. **Two upper Chesapeake bay battery decoys, a canvasback drake and a canvasback repainted as a bluebill.** Both birds have multiple coats of old gunning paint which exhibit heavy wear. Crack in neck of canvasback as well as a small tail chip. “Bluebill” in good structural condition with an illegible brand on bottom under the paint. Both weights removed.

500-750

Provenance: Althans Collection

457U. **Red-breasted merganser drake attributed to Ben Smith.** The absence of the circular weight on the bottom gives credence to the attribution. A poured flush circular weight would indicate that Keyes Chadwick was the maker. An old veteran in weathered and worn paint.

1000-1500

457V. **Red-breasted merganser drake ca. mid to early 1900’s attributed to Elmer Crowell of East Harwich, Mass.** An early form with paint by James Lapham of Dennisport, Cape Cod. Paint is in very good condition with quite a bit of wear to one side of the head.

400-600



457T(2)



457U



457V

458



460

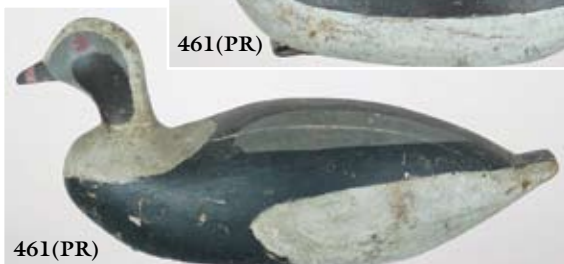
458. Black duck ca. early 1900's by Gus Wilson of South Portland, Maine. Carved raised wings, detailed bill carving. In excellent original paint with little wear. Head is cleverly designed for the head to bob back and forth with wave action. 9500-11000

459. Maine red-breasted merganser ca. 1900 with fine original paint by Amos Wallace of Bailey Island. Minor gunning wear. Inletted head, carved eyes, unusual iron keel/weight. Neck has age crack. An exceptional folk art merganser. See page 106, plate 174, in *Decoys, A North American Survey* by Kangas, for a photo of a Wallace merganser. 8000-12,000
Provenance: Slocum Collection

Literature: *Decoys, A North American Survey* by Kangas.



461(PR)



461(PR)

459



460. Wonderful sleeping Canada goose ca. 1880 by Have-lock Mill, of Mill's Point, Prince Edward Island. Head is nestled in a snaky undulating manner tight to the body. In very old and original paint. Originally mounted on an ice platform. See page 132 in "*Decoys of Maratime Canada*" for a photograph of a rignmate. 8000-12000

Provenance: Slocum Collection

461. Rignmate pair of oldsquaw by an unknown maker from Maine. Some dings and chips to nice old, crazed surface. Some original and some in use repaint. Tiny tight check on back of drake and a very tiny chip missing from both tails. Both birds branded "A.R. Angell". 1500-2500

462. Pair of sleek solid bodied red-breasted mergansers from Lunenburg County, Nova Scotia, Canada. Hen is in fine original paint with an overstrike possibly on the black wings. Drake is original paint with an overstrike possibly on the black on the back and around the neck. Both have glass eyes. 2000-3000



462(PR)



463. Folkly early eider drake ca. 1890-1900 from Mantinicus Island, Maine, with dry, old, original paint. Old in use break to the bill has been re-attached with tacks. Age crack to neck has been filled with glue. 3500-5500

Provenance: Slocum Collection



464. Extremely rare rock duck or harlequin drake decoy by a talented unknown maker from Nova Scotia, probably Lunenburg County. This is a "one of a kind" top quality carving of a most desirable and unusual specie. Wonderful paint and form. 4500-7500

Provenance: Huster Collection, Lawton Collection.

465. Large eider drake from Maine in old mostly OP with possible touch up to the black areas. Made from an old telephone pole and hollowed out from the bottom. Neck check. X collection of a Mass. south shore collector. 250-450

466. Wonderful early Nova Scotia loon decoy. A large bird measuring 25 inches from bill to tail in old paint that appears mostly original with some in use strengthening to white areas. Old tight crack in neck. Tail chip may be original to construction. Three large nails protrude down from body to act as a stabilizer/keel. 2500-4500

Provenance: Ex G. Guyette Collection



467. Solid body Nova Scotia hen goldeneye in very good OP with very light gunning wear. Head slightly loose and nail at top of head visible. Original weight. 250-450

467A. Pair of solid body glass eye red-breasted mergansers by the late Fred Anderson of So. Portland ME. with slightly turned heads. In XOC with one or two extremely minor surface rubs. Signed and dated 1978 by Anderson with his carved "A" brand in the bottoms. Anderson was a close friend and next door neighbor of Gus Wilson and often worked with Gus making decoys. 450-650

467B. Red-breasted merganser drake decoy by Frank Dobbins, Jonesport, ME. In XOC. (Excellent original paint). Tiny rubs to extremities and tight check in back. Signed by Dobbins on bottom. 400-550





467C. Hooded merganser drake decoy by Frank Dobbins, Jonesport, ME. In XOP. Inlet neck and head, carved and painted eyes, and wing outlines. Wear to the paint at the tip of the bill and very minor wear on the tail edge. Signed on the bottom "Frank S. Dobbins, Jonesport, Maine". 300-450

467D. Seagull decoy by George Soule, Freeport, Maine. Soule was the originator maker of the famous L.L. Bean line of decoys. Excellent original condition. 800-1000

467E. Green-winged teal drake by Frank Dobbins, Jonesport, ME, 1980. In XOC. X early So. Shore, Mass. Collection. 250-450

468. Pair of hollow shoveler decoys in XOC by Virgil Lashbrook, Pekin, IL. "V. Lashbrook, 914 Winter St. Pekin, ILL" impressed in the bottom of both and signature "Virgil Lashbrook, 2/19/75" in ink. Both have turned heads, glass eyes and great paint. Unused and unrigged. 2000-3000

469. Alert high-head pintail drake by Torry Ward, Portage LaPrairie, Manitoba, Canada with carved and raised wings. XOP and condition. Signed on bottom. 300-500

470. Preening green-winged teal drake attributed to Donna Tonelli made in the manner of Charles Perdew. In XOC. 300-500

471. Hollow pintail hen decoy by Charles Shoenheider Sr. (1854-1944), Peoria, IL. Appears to be old dry original paint with wear. Slight separation at body and neck seam. Small tight check in back. Struck by two or three small shot. 2000-3000

472. Very rare bluebill drake decoy by Paul Lipke of Whiting, Indiana, c1940. Strong OP with some touch up to the white areas on the sides. Very light wear with a few small flakes to the wood or primer. Old tight crack in neck. Rigmate to lot 473. 4500-6500





473



474(PR)



474(PR)

473. Very rare bluebill hen decoy by Paul Lipke of Whiting, Indiana, c1940. Strong OP with some touch up to the white areas on the sides. Very light wear with a few small flakes to the wood or primer. Old tight crack in neck. Rigmate to lot 472. 4500-6500

474. Pair of hollow green-winged teal decoys by Louis Stabb. In nice OP with glass eyes and slightly turned heads. Branded LS on the bottom of both. Hen has a dent on the top of the bill and a tight check that extend through the bill. 1800-2000

475. Pair of hollow green-winged teal decoys by Virgil Lashbrook. In XOC. Signed "Virgil Lashbrook, 11/14/90" in ink. Both have turned heads, glass eyes and great paint. Unused and unrigged. 1800-2200

476. Rare early pair of partial cork-bodied and pine pintail decoys by Edson Gray (1891-1982) of Ocean View, DE. In fine original paint with great detail and light wear. Both have pine heads, necks, and pine sterns with a pine tail. Glass eyes with cracks and weighted keels. "WHP Jr." branded on the bottom of both. Brand is for William H. Purnell. Hen has a narrow check in the lower neck and drake has a couple lower neck checks with old wood dough repairs. Known as southern Delaware's finest decoy maker, the Havre De Grace Decoy Museum opened an Edson Gray display in 2005. Provenance: William Purnell 4000-6000



475(PR)



476(PR)



475(PR)



477(PR)



478(PR)



478(PR)



479

477. Pair of blue-winged teal by John Baker, Bristol PA. In XOC with a few minor rubs to paint on the drake. "John Baker" impressed into the weights on the bottom.

1200-1800

478. Pair of wood duck decoys by Virgil Lashbrook, Pekin, IL. Both heads turned to the left, the hen's resting on the breast. Wonderful original paint with minor "flecks" on the back and a small knot under the tail on the drake. Both retain the "V. Lashbrook, 914 Winter St., Pekin Ill" stamp on bottom. A beautiful pair of decoys.

1800-2200

479. Bufflehead drake with head turned slightly to right by Torry Ward. Raised wings with drop tail. In XOC in all respects.

250-450

480. Graceful matched pair of blue-winged teal by Fredrick Brown of Point Pleasant N.J. with his plate on the bottom as well as his signature and the date 2007. Hen in preening pose. Excellent and original.

500-750

481. Graceful matched pair of green-winged teal by Fredrick Brown of Point Pleasant N.J. with his plate on the bottom as well as his signature and the date 2007. Hen in preening pose. Excellent and original.

500-750



480(PR)



481(PR)



482. Matched pair of wood ducks by Fredrick Brown of Point Pleasant N.J. with his plate on the bottom as well as his signature and the date 2007. Both heads slightly turned. Excellent and original. 750-1250

483. Brant decoy ca. 1915 by A.E. Crowell, E. Harwich, MA. In near perfect original paint. This decoy was the lead brant on a gunning triangle on Cape Cod. As fine a gunned over brant as you will find by Elmer Crowell. Brant shooting came to a halt in the early 1900's when a blight hit the eelgrass in the northeast. This was unfortunate for waterfowlers, but lucky for collectors of brant decoys as many were taken out of service. This is an example of Crowell's top grade brant decoy. 24,000-28,000

484. Rare early mallard drake by A.E. Crowell, E. Harwich, MA. In XOC. Possibly glue placed in neck seam with touch up. From the famous Herbert W. Hoover rig. (Hoover Vacuum Cleaner Co., Canton, OH.) Age check in bottom. Hot branded with Crowell's oval mark. Prior Sale- lot 54, Bourne Auction, Cape Cod, July 1975. 15,000-25,000



485. Pintail hen by A. E. Crowell, E. Harwich, Mass. In excellent original paint with minor gunning wear, minor paint loss edge of bill and tip of tail. This rare decoy is in very good condition with an old hunter in use repair to a check in the neck. Hit with a couple shot marks. The bottom of the decoy is hot-branded with Crowell's oval mark and a "Q" for the famous Cape Cod Quandy collection. "HOOVER" is painted on the bottom and "pintail" hand written in pencil. This decoy is pictured in "New England Decoys", by John Delph on page 152, bottom plate. The publisher confused the Hoover rig with the Hazelton rig, but the decoy is the same. 8000-12000





486. **Very rare solid body brant by Joe Lincoln.** From the classic Ben Clark rig of Cohasset, MA. Strong OP with gunning wear to the high spots on sides, bill and tail tip. Typical Lincoln check in right side has been filled in professionally. Small chip missing from base of neck. Similar decoy- page 36, bottom plate in Joseph W. Lincoln by Cap Vinal. 18,000-24,000



487. **Rare smaller size canvas over slat goose by Joe Lincoln, Accord, Mass.** Good condition except for two tight neck checks. 400-600



488. **Mallard decoy by A.E. Crowell, E. Harwich, MA.** In XOC. This outstanding decoy was made as a retirement gift for its original owner. Crowell's rectangular stamp, Colburn C. Wood Jr. collection stamp, and a circular lead weight are in the bottom of this fine mallard. 4500-6500

489. **Beautiful black duck by A. E. Crowell of East Harwich, Ma.** Head turned slightly to the right. Old, small, well executed repair to base of neck. A few isolated tiny areas of touch up to the body area. Structurally excellent except for a small piece of shot behind the right eye. Retains a crisp impression of the early oval stamp. Overall a wonderful example of an early Crowell black. 1200-1800



489A. **Redhead decoy by H. Keyes Chadwick of Oak Bluffs, Martha's Vineyard.** From the famous Charley Foote rig and so branded on the bottom. 2500-3500

490. **Extremely rare and important whistler decoy by Frank W. Benson, Salem Massachusetts (1862-1951).** Very old original paint is cracked and crazed with age. White cheek patch may have been strengthened at some point in the past. Decoy clearly exhibits Benson's sculptural use of the gouge to depict the raised wings, tail and primary feathers. Folky head is loose but was originally carved as if turned slightly to the left. There is a small tight crack in the bill as well as a sliver of wood missing from the bottom side. A signature by Mr. Benson's daughter and the date 1879 are faintly visible on the bottom under a black light. For a picture of rigmates to this bird please see page 16 of the exhibition catalog – Frank W. Benson – His Sporting Art. by the Ward Museum of Wildfowl Art, October 12, 1996 to January 12, 1997. Truly an heirloom decoy by one of the acknowledged masters of American sporting art.

OPEN ESTIMATE





491



492(PR)



493



494

491. Petite bufflehead hen by the late Winsor White, Duxbury, Ma. Cork body with bottom board and wooden tail section. Nicely carved and painted. Excellent original condition. 750-1250

492. Pair of Massachusetts black duck decoys ca. early 1900's in excellent original paint with minor imperfections. 350-550

493. Turned head bluebill hen decoy by H. K. Chadwick, Oak Bluffs, Martha's Vineyard, MA. In OP with glass eyes and surface crazing typical of birds from this period. Circular inlet weight on the bottom. Surface rubs and rigging line marks on the back. 800-1200

494. Early hollow red-breasted merganser hen decoy by Fred Nickerson of Falmouth, Massachusetts, and Nova Scotia. Interesting pegged construction, upswept bill, turned head and large glass eyes. Paint is original. Knot on the forehead and remnants appear on the right side of the face. Saw marks in the making on the mid-back. 4000-6000

495. Black duck from the Massachusetts area carved in the influence of A.E. Crowell. Head turned sharply to the left. Old paint looks original and shows moderate wear. Similar to Crowell's "Iver Johnson" model. 1000-1500

496. Very well preserved canvas over slat Canada goose by Joe Lincoln of Accord, Ma. In old crazed gunning repaint. An old $\frac{3}{4}$ " x $2\frac{1}{4}$ " patch on left side may be original to the construction. Small rub in canvas to wood on bottom rear does not detract. 500-1000

497. Head and breast of a George Boyd slat goose. Sits flat on a shelf or hangs from a hook. Old paint appears to be a combination of old in use touch-up with some original. Several checks to breast section. 450-550



495



496



497



498. **Martha's Vineyard widgeon decoy stripped to bare wood.** Graceful form by a master carver. Head loose and one half of bill replaced. 400-600

499. **Widgeon drake by Keyes Chadwick, Marthas Vineyard, MA.** In protected natural wood. This is the exact decoy pictured on page 38 of Stanley Murphy's book – Martha's Vineyard Decoys. To quote Mr. Murphy, this is "One of Chadwick's last carvings, dated and initialed by him on the bottom: 'H.K.C. 1950'. He was 85 at the time and didn't get around to painting or weighting it." Decoy is in excellent original condition. A rare piece of Massachusetts decoy history. Included with the decoy is a 1st edition copy of Stanley Murphy's book – Martha's Vineyard Decoys. Book is in very good condition with some "waviness" to the pages and a few tiny tears to the dust jacket. 1200-1500
Provenance: Saltonstall collection

500. **Plover decoy ca. early 1900's in natural finish by Frank Adams of West Tisbury, MA.** See pages 20 & 21, plates 9 & 10 in Martha's Vineyard Decoys by Stanley Murphy for photographs of Adams shorebirds from this carving period. 300-500
Provenance: Saltonstall Collection

500A. **Merganser hen ca. 1900 with excellent form from Marblehead, Mass.** Laminated body construction. In old gunning repaint with some original paint. Examples like this decoy and possibly by this maker are in the collection of the Peabody-Essex Museum in Salem, MA. 1200-1800



501. **Solid bodied brant decoy ca 1900 by Joseph Whiting Lincoln of Accord, MA.** In beautifully restored condition with a few age checks in the body, glass eyes, very nice form. Head forward slightly in a swimming position. 2000-3000

502. **Solid bodied tack eyed white-winged scoter decoy by Gordon Mann, Rockland, MA.** In original paint with touch up. Narrow check on the bottom and a few thin grain line age checks in the body. Some original filler is visible in a few of the checks. Knot visible on the back with a few flakes of paint missing. 500-750

503. **Racy mallard drake by A. E. Crowell.** Bears the early oval "1915 style" stamp. Head turned slightly to the left with typical Crowell rasping to the rear of the head and breast. Painted with a second coat of paint by Crowell. It is possible that the bird was used as a door stop as it shows no indication of ever have been rigged. 1500-2500

504. **Rare Barrows goldeneye drake decoy by Guy Soule, Duxbury, MA.** In fine OP with light wear. Glass eyes, original keel. Thin body check on the right side. "Guy Soule, Duxbury, Mass, ca. 1900 on the bottom in pencil. 500-750





505



506



507



507A

505. Rare example of a red-breasted merganser drake decoy by Preston A. Wright, Osterville, MA. Carved eyes and a whipped repair on the bill. Paint has been restored to resemble the original with wear. 1200-1600

506. Rare cork body pine head broadbill decoy by Charles "Shang" Wheeler, Stratford, CT. In XOC with light wear. Glass eyes, original wooden keel, and wonderful pegged cork body construction. Keel has the "Haertel Collection" ink stamp and an old collector's tag that reads "This is Shang Wheeler's Broadbill". 900-1200

507. Bluebill hen by Keyes Chadwick, Martha's Vineyard, MA. In original paint which is heavily crazed over the body area. Six or seven small areas where paint has been rubbed to expose the white or primer beneath. Very good structural condition. Typical inlet weight and numerous Chadwick notations on bottom. 1200-1600

Provenance: Saltonstall collection

507A. Solid-bodied merganser hen decoy from Cape Cod with carved eyes. Old paint with original. 800-1200

508. Early style bluebill drake ca. 1900 by H. Keyes Chadwick of Martha's Vineyard, MA. Painted with his early paint pattern. In fine original paint with light to moderate wear and small rubs. Structurally excellent. The bill may have a thin wash of overpaint that looks like it could easily be removed. 2500-3500

508A. Rignate pair of turn head surf scoters ca. early 1900's by Fred Nickerson of Falmouth, Cape Cod, and Nova Scotia. Made when he was living in Falmouth, Mass. and purchased by a collector/antique dealer in Wareham, Mass. Carved wings and primaries. Nice, old, 100% OP. A few thin, tight checks to the bodies of both birds. Tiny chip off the tail of drake. Decoys were little used if at all. 14,000-16,000



508



508A(PR)



509

509. Sleeping yellowlegs ca. 1890-1910 by Melvin Gardner Lawrence of Revere, Massachusetts. In excellent original condition with a few minor rubs and dings. Fitted with taxidermy quality glass eyes. Lawrence had a camp in the Punkhorn area of Brewster and hunted in New England prior to and just after 1900 for both big game, game birds, waterfowl, and shorebirds. We have yet to find any of his waterfowl decoys if he indeed made them during his very short lifetime. His shorebirds speak for themselves. The rolling lines, rounded edges and hardwood he used, make this decoy both delightful to look and nearly indestructible. High quality glass eyes. Beautiful to the eye and virtually indestructible.

45,000-55,000

Provenance: Dr. George Ross Starr Collection.



510

510. Important black-bellied plover with glass eyes from Kingston, Massachusetts, ca. late 1800's. Lothrop Holmes is possibly the maker. The decoy is all original with patina and the usual signs of great age.

9000-12000

Provenance: Dr. Lewis Webb Hill Collection

511. RARE Hudsonian curlew ca 1890-1900, with glass eyes by Anthony Elmer Crowell of East Harwich, MA. Surface crazing and paint loss does not detract from the appeal of this boldly carved early curlew decoy. "M" carved into the bottom near the stick hole. "Hudsonian curlew, Elmer Crowell, Mass" is written in ink under the tail.

18,000-22,000



511



511A. Flattie black-bellied plover by A.E. Crowell. Strong OP shows very light rubs to eyes, bill tip and tail. Bill appears original and is correctly carved for the species. An appealing example of this form. 7500-9500

511B. Flattie yellowlegs by A.E. Crowell. The original paint is lightly crazed and darkened with age. A few tiny paint drips on left neck. Overall a very nice example of this style of carving by Crowell. 4500-6500

511C. Flattie yellowlegs by A. E. Crowell. Some small traces of OP but mostly in use overpaint that is well worn and crazed. Bill may be an old replacement. Hit by shot. 500-1000



512. Feeding Long Island shorebird with glass eyes appears to be a godwit in its gray or winter plumage. Either marbled or hudsonian. Glass eyes. Flat tail design. 1500-2500

513. Split tail Massachusetts yellowlegs decoy by Torrey with the Starr collection ink stamp on the bottom under the tail. Paint has crazed on the surface and there are a few flakes from wood grain lines along the sides. Tack eyes. OP with interesting dot design overall. "YL22" in ink under the stick hole. 750-1000

513A. RARE North Carolina rust-breasted root-head dowitcher ca. 1880-1910. Two piece construction with the join at the base of the neck. Metal bill. Tiny vertically split tail. Wonderful old original paint. Obviously hewn with an ax, knife, and a rasp. The early two-piece design is a unique regional style to that area. 3500-5500
Provenance: Althan Collection





513B. RARE North Carolina rust-breasted root-head dowitcher ca. 1880-1910 by the same hand as the prior lot. Split tails and fine OP with light overall wear with some possible darkening to both breast. One bird has a metal bill that appears to be an old replacement. An extremely appealing pair of birds that demonstrate a unique regional style.
3500-5500
Provenance: Althan Collection



514. Massachusetts curlew decoy with a split tail and numerous shot scars. Good old in use paint. Body is $\frac{3}{4}$ inches thick with flat sides. Bill is probably a replacement.
1800-2400

515. Nantucket golden plover decoy similar in form to the "Mr. Harris" decoys. Nice mellow gold dots over the back and sides. Paint appears to be original. Struck by a few shot. Light wear and a few slivers of wood missing from under the tail. Sides of neck seam have split where the neck was nailed to the body.
1200-1800



516. Lifesize feeding yellowlegs on a carved painted clamshell by Al Gardner. Tack eyes, split tail and the oval brand on the bottom of the base that reads, "Alfred B. Gardner, Accord, Mass". In XOC.
250-450

517. Peep decoy with black glass bead eyes and nice old working paint. Flat sides. Approximately $\frac{3}{4}$ inches thick. Few flakes along the wood grain lines on one side. Starr collection ink stamp on the bottom. Bill is probably a replacement.
450-650

518. Running golden plover decoy by noted contemporary carver Robert Mosher, Hingham, MA in XOC. Carved wings, glass eyes and wonderful form. Incised "RPM" under the tail.
350-550

519. Large curlew decoy by Reggie Birch of Chincoteague, VA. In XOC with carved eyes and a split tail.
350-550





520



521



522



523



524

520. Bold black bellied plover decoy by noted contemporary decoy carver Martin D. Collins, Middleboro, MA. In XOC. Glass eyes with a split tail and carved wing outlines.

300-450

521. Split tail running yellowlegs decoy by noted contemporary carver Robert Mosher, Hingham, MA in XOC. Carved wing detail. Incised with "RPM" under the tail.

250-400

522. Ruddy turnstone in the manner of Lothrop Holmes signed G. Starr. Either Gary or Doctor George Ross Starr. Nicely antiqued and beautifully painted.

400-600

523. Dunlin by Reggie Birch, Chincoteague, VA, in XOC on a carved shell base. Carved signature on bird, written signature on base.

250-450

524. Decorative woodcock by J. B. Garton, Smith's Falls, Ontario, Canada. In XOC. Glass eyes, nice driftwood base. Few tiny rubs to the edges of the bill and tail. "American Woodcock" in ink on the bottom of the base.

350-550

525. Turned-head lifesize semi-palmated plover on a circular wooden base by the late Peter Peltz, Sandwich, MA. In XOC and very nice patina. Signed "Peter Peltz, SemiPalmated Plover" on bottom of the base.

350-550

525A. Yellow warbler with carved crossed feathers by Peter Peltz, Sandwich, MA. In XOC. Unsigned.

400-600

525B. Turned head house wren by Peter Peltz, Sandwich, MA. In XOC and very good paint. Signed "Peter Peltz, House Wren" on base.

400-600



525



525A



525B



525C. Miniature flying wall mount green winged teal by the late Peter Peltz, Sandwich, MA. In XOC with bill opened and signed "Peter Peltz, Green Winged Teal" on the back. 350-550



526. Beautiful hollow turned head green winged teal drake decoy by Frank Finney with glass eyes and great grain painting on the sides and back. Weight and an incised "F" on the bottom. 600-900



527. Turned head mallard drake decoy with glass eyes by the late Paul Carter from Middleboro, MA. XOC with "P. Carter" hot brand and "Colburn C. Wood" collection stamp on the bottom. 300-450

528. Miniature sleeping Canada goose with carved wing detail from Hingham, MA by an unknown maker. Mounted on a wooden base. 100-125

529. ¾ size woodcock ca. early 1900's by Russell Pratt Burr of Hingham, MA. Stamped twice with the Russ Burr ink stamp on the bottom. Nicely mounted on burl. 1200-1800

530. Rare and diminutive flying woodcock on a branch tip by Russ Burr of Hingham, Mass. Detailed wing primaries and delicate bill. Excellent original condition. (XOC) Stamped with the Russ Burr ink stamp. 700-900

531. Mini cock grouse on a burl mount by Russ Burr, Hingham, Mass. Fine original paint with a few very tiny rubs to the edge of the tail. Excellent structural condition. Burr stamp on bottom. 800-1200

531A. Exceptionally rare, probably one of a kind, flying male eastern bluebird by Russ Burr, Hingham, Mass. Mounted on a branch tip. Excellent structural condition with a few very tiny rubs to the paint on the upper surface of the bird and the leading edges of the wings. Burr's ink stamp on bottom. 1200-1800



Russell Pratt Burr



528

529-530-531



531A





532



533



534



535

532. Very rare, large size, 9 ¾ inches widgeon drake paperweight by Frank Adams of West Tisbury, Martha's Vineyard, MA. Carved raised wings. Fine original paint has tiny rubs to bill and tail tip with a few small scratches on the body. Large portion of original paper label is very readable. Widgeon were not a common species for Adams. 900-1200

533. Rare, large size (9 ¾") mallard paperweight by Frank Adams of Martha's Vineyard, MA. Carved wings with lightly crazed OP. Small rub to paint at tip of bill and two or three tiny scratches or mars to the paint on the body. Tiny shred of original paper label on bottom. 900-1200

534. Pair of mallard half body flyers, 13 inches wing-tip to wingtip. Attributed to A. Peltier. In XOP with some separation in areas where body filler has been used in the construction. 200-300

535. Diorama with a pair of miniature flying mallards by Arthur Peltier of Warwick, Rhode Island. In XOC under a convex bubble of glass in a 7 ¼ inch x 7 ¼ inch frame. Signed on rear in Peltiers hand, "Male and Female Mallard ducks" along with the original price of \$23.95. Peltier carved many of these dioramas, mostly of songbirds. He carved from the mid 1940's to the late 1970's. 200-400

536. Lifesize decorative carving of a Gyr falcon on a hardwood base by noted Cape Cod carver Mark Holland. Signed on the base by the maker. Outstretched wings with detailed carving and applied tail feathers. The original paint has patinated with age. One tail feather chipped. 800-1200

537. Beautiful black duck mini carved in the form of a decoy by George Boyd of Seabrook, New Hampshire. Fine original paint with a couple of tiny imperfections toned down on the edges. Black duck faintly written on the bottom. 2500-4500

538. Mini mallard drake carved in the form of a decoy by George Boyd of Seabrook, New Hampshire. In XOC with the crazed area toned down with a wash that is applied and wiped off. Mallard drake faintly written on the bottom. 2500-4500

539. Miniature black duck by Robert Morse of Ellsworth, Maine ca. first ½ of the 1900's. In excellent original condition in all respects. Morse sold his carvings only through the Audubon Society. 2500-4500

540. Matched pair of wood duck miniatures by George Boyd of Seabrook, NH. With typical crazing. A wash applied to darken the white primer between the crazing lines. 4000-6000



536

537-538-539



540(PR)

541-542-543



544-545



546-547-548



549-550-551



541. **Lapham mini woodcock by James Lapham.** In XOC in all respects. Signed on the bottom. Signed "Wood Cock 1963, James Lapham, Dennisport, Mass".
500-750

542. **Early miniature grouse by James Lapham with carved thigh detail.** In XOC with a warm patina. Signed "J LAPHAM 59" on the bottom.
600-900

543. **Half size ruffed grouse with a wide tail, dropped wings, and a carved crest.** It is in XOC. Signed "Ruffed Grouse, Male, James Lapham, Dennisport, Mass" in ink on the bottom of the base.
500-750

544. **Finest quality miniature goldeneye drake made in two pieces joined at the neck by James Lapham.** In XOC with a nice warm patina. Signed "WHISTLER J LAPHAM" in ink on the bottom. Made in the 40's or 50's for his hunting companion and good friend, Bren Taylor.
600-900
Provenance: Bren Taylor Collection

545. **Miniature mallard drake by James Lapham in XOC with a nice patina.** Made in two pieces with a neck join. Head turned to the right. Curled tail feathers are made out of metal. Top of the line quality.
600-800
Provenance: Bren Taylor Collection

546. **RARE miniature stilt by A. E. Crowell. In excellent original condition.** A very early carving ca. early 1900's. On the bottom of the base is written pencil "Black Necked Stilt."
3000-4000

547. **RARE running miniature ruddy turnstone by A. E. Crowell.** In XOC. Written in pencil on the bottom in script "Ruddy Turnstone".
3000-4000

548. **Miniature "sleepy eyed" sandpiper by A. E. Crowell mounted on driftwood.** In XOC. The ink stamp or label has fallen off but this is positively guaranteed to be by Crowell.
2800-3400

549. **Miniature mallard by A. E. Crowell in XOC.** Mounted on driftwood. Crowell's circular blue paper label is on the bottom.
2400-3000

550. **Early miniature blue-winged teal drake by A. E. Crowell.** Outstanding paint in XOC. Bottom reads, #21 in pencil with an impressed rectangular brand. Our best guess with this style of paint it would have been done in the 20's or early 30's.
2500-3500

551. **Bluebill drake by James Lapham in excellent original paint (XOC).** Carved split wing detail. Bottom reads "Scaup Drake J. Lapham, Dennisport, Mass".
500-750

551A. **Miniature feeding canvasback drake by A. E. Crowell, East Harwich, MA.** The impressed rectangular brand is on the bottom of the base. In XOC with light crazing on the breast and neck.
2400-3000

551B. **Miniature canvasback hen by A. E. Crowell, East Harwich, MA with the impressed rectangular brand on the bottom of the base.** In XOC with two tiny rubs to the top of the head and the edge of the tail.
2600-3000

551C. **Miniature black duck by A. E. Crowell, East Harwich, MA.** In XOC with the rectangular impressed brand and "Black Duck" in pencil on the bottom of the base.
2400-3000

551A-551B-551C





552-553-554



555-556

552. **RARE Crowell miniature herring gull is in XOC.** Mounted on a carved and painted clam shell. Impressed rectangular brand on the bottom. 2200-2800

553. **Miniature surf scoter by James Lapham in XOC with raised wing carving.** Bottom reads "Surf Scoter J. Lapham, Dennisport, MA". 500-750

554. **Miniature common tern by James Lapham with carved split raised wings in XOC.** Bottom reads Common Tern, J. Lapham, Dennisport, Mass". 600-900

555. **Half size dowitcher by Lapham with the head turned back over the body and wings outstretched.** Bottom reads "Dowitcher, Fall, J. Lapham, Dennisport, MA". 600-800

556. **Tern miniature by an unknown maker.** Illegible signature. 25-50



558(PR)



557(PR)

557. **Pair of quail double mounted on driftwood.** Maker unknown. In XOC. 75-125
Provenance: Bren Taylor Collection

558. **Pair of miniature harlequin ducks by Horace "Hie" Crandall.** In XOC in all respects. Signed in ink on the mount. 1500-1800

559. **Rare pair of Mountain Quail on a section of log by "Hie" Crandall.** Excellent original paint and condition. Signed and dated 1967 with paper label on base. 1500-1800

560. **Rare Canada goose paperweight by "Hie" Crandall.** In excellent original condition with feather carving on the wing tips. 700-1000

561. **Widgeon drake miniature in XOC by J. B. Garton.** Rectangular impressed brand on the bottom reads "John B. Garton, Smith Falls Ontario". Stamped "Made in Canada" and "Widgeon" in ink. 500-700

562. **Wood duck drake miniature in XOC by John B. Garton.** Same information on the bottom as the lot above. 500-700



559(PR)



560-561-562

563-564-565



566-567-568



563. **Green-winged teal** by Jess Blackstone of Concord, New Hampshire, in excellent original condition. JB signature on the bottom. 800-1200

564. **Miniature pair of redheads** by A. J. King in XOC. Signed on the base, A. J. King. 2500-3500

565. **Herring gull miniature standing on a boat cleat** by Arthur Blackstone. Paper label "handcarved and painted by Blackstone". In ink "Herring Gull" Also collector initials "MPG-OL". 350-550

566. **Miniature wood duck drake** by Harold Gibbs. In XOC. Bottom reads "H Gibbs 1969" in pencil. Donald B. Howes collection ink stamp on the bottom. 500-750

567. **Miniature black duck** by Harold Gibbs. In XOC. Signed "H Gibbs 1969". 450-650

568. **Miniature brant** by Harold Gibbs. In XOC. Signed "H Gibbs" in pencil. 500-750

569. **Miniature golden pheasant** by Harold Gibbs. Signed "HNG 22.50" in pencil. 450-650

570. **Mini quail** by Harold Gibbs. In XOC. Signed "HNG 1956" in pencil. "9" in ink. 500-750

571. **Mini hudsonian godwit** by Harold Gibbs. Partial pencil signature. "NG". 500-750

572. **Lifesize chickadee** by Gustave Jansson of Cummaquid, Mass. Partial Jansson hot brand on the bottom. 300-500

573. **Miniature meadowlark** by an unknown maker. In XOC. 100-200

572-573



569-570-571





574(PR)



574(PR)



574A



575



576

574. Lot of 2 Dr. Hill carvings. Canvasback drake mini (7 ¼" overall) by Dr. Lewis Webb Hill of Milton, MA. Mounted on a dark hardwood base. Swimming pose with carved wings and crossed wingtips. Beautifully painted and excellent in all respects. Bears "HILL" stamp on base. Also, a redhead drake miniature, (7" overall), mounted on a dark hardwood base. Swimming pose with carved wings and crossed wingtips. Beautifully painted. Old clean crack in neck and a tiny blemish to the paint over the right eye. Base bares the "HILL" stamp. 1500-2500

574A. Half-size flying pintail attributed to Charles Hart from Marblehead. Excellent condition with a few very tiny rubs and light crazing to the paint. 300-500

575. Solid-bodied eider drake from Maine ca. 1900 with original paint possibly with minor in use touch up. Nicely detailed head and bill. Struck by shot, few grain line age checks on the body. Nice bold decoy from the Maine coast. 6000-8000

576. Old squaw drake decoy ca. 1890-1910. Solid body and painted eyes from the Maine. Wonderful form and paint design. Old chip at the edge of the tail and a check midline on the back extends to the breast under the neck. Struck by shot. Paint appears original. Two ¼ in holes in left side may have been used to mount on display. 3000-5000

577. Solid bodied oldsquaw drake decoy with inlet head and neck from Maine. Old working paint with white over painted. Black original. Knot on the left side of the tail. Painted eyes. Few line age checks and tiny chips off the edge of the tail. 600-800

578. Solid bodied swimming old squaw drake decoy with carved eyes and wonderful weathered paint. Struck by shot. A knot is on the back along with a few minor surface dents. Paint appears to be mostly original. 1500-2500

579. Hollow goldeneye drake decoy attributed to Captain Bartholomew of Wareham, MA. Slightly turned head, inlet neck, and unusual pegged two-piece body construction. Carved bill and wing tip detail. Wonderful form. Nicely weathered surface. 1500-2500



577



578



579



580. Solid Canada goose ca 1900 by Charles Safford of Newburyport, Mass. In old worn overpaint which is weathered and flaking. Checks in body and what is left of the bill tip is old and replaced. Decoys by this maker are rare. "III VIII" carved in bottom. Rigmate to the other Safford in this auction. This decoy is worthy of restoration as it is extremely rare in any condition. 300-500

581. Solid Canada goose by Charles Safford of Newburyport, Mass. In old worn overpaint which is weathered and flaking. Checks in body and tip of bill is old replacement. Decoys by this maker are rare in any condition. "IV - III" carved in bottom. 300-500

582. Hollow, Harry V. Shourds, "mahogany" Canada goose. Graceful form in a swimming pose. Lightly worn. In old attractive working repaint. Tight check in neck, otherwise excellent condition. 800-1200
Provenance: Joe French Collection

583. Swimming brant by Harry Shourds or B. P. Morris in old in use repaint. Old collection tag attributes the bird to B.P. Morris of Philadelphia who hunted with Shourds and shared his patterns. Old worn gunning paint. Crack in neck and separation at body seam. Branded "P MORRIS". 300-500



583A. Canada goose "tip-up" by Lloyd Parker, N.J. ca. 1910 in excellent condition with in-use repaint. X. Early south shore collection. 350-550

583B. Pair of hollow pintails from New Jersey. Unknown maker. Carved and painted in a manner similar to John Blair. 500-1000

584. Outstanding black duck by Harry M. Shourds of Tuckerton, N.J., circa early 1900's with strong original scratch feather paint. Some small areas have rubs and light wear that have darkened with age. Two tiny chips under the bill do not detract from this graceful, beautifully preserved example of this important makers work. 9000-12000

585. Pair of New Jersey bluebills by Bill Brown. Birds are in old gunning repaint with some areas of possible OP. Old repairs to tight cracks in both necks otherwise structurally good. 500-1000

585A. Hollow, New Jersey black duck with "H. Hoffmann, Thorofare, N.J." stamped into weight. Old, thickly applied paint shows light wear. Small rubs to bill and tail tip. Head slightly loose. 300-500





586



587



588



589



590



590A

586. **Bluebill drake by Bordentown, New Jersey decoy maker John McLoughlin.** Good working repaint with traces of original possible especially on the mid body, head, and bill. Lightly hit by shot. 300-500

587. **Hollow bluebill hen by Lloyd Parker, Parkertown, N.J. in dry worn OP.** Excellent structural condition. A nice honest example of this recognized makers work. 300-500

588. **Swimming New Jersey black duck similar to the work of the Bowen family.** Balsa construction with flocking to the original paint. Wear and rubs to right side, bottom edges and tail tip. 300-500

589. **Hollow redhead drake by Joe King.** Well worn paint with traces of original. Checks in head with old nail repairs to neck. Inlet weight has fallen out. 250-400

590. **Hollow New Jersey bluebill drake by Ellis Parker.** Working repaint with light to moderate wear. Excellent structural condition. 300-500

590A. **New Jersey black duck ca. early 1900's with a flocked surface treatment by an unknown maker.** Excellent OP very light wear. Tight crack in neck and a sliver of wood missing from the very bottom of the decoy. 300-500

591. **Pair of solid bodied bluebill decoys from Long Island in good old gunning mostly OP.** White areas on wings, sides and around bill may be overstruck. Nice pair. 300-500

591A. **Bufflehead drake decoy ca. late 1800's from CT or LI with age split in back, no eyes and good old working paint.** Struck by a few shot. 400-600

592. **Very rare and early period freshwater coot by Ken Anger.** Head turned slightly to the right. Some paint loss at neck seam with rubs to paint on top of head. Both glass eyes are cracked. A very rare species for Anger. 1200-1800

593. **Mallard hen by Cecil V. Anger.** Excellent and original with very light wear to high spots. Carved in the manner of Ken Anger. Stamped on bottom "made by Cecil V. Anger, 438 Main St. West, Dunnville, Ontario, Canada. 1200-1800



591(PR)



591A



592



593



594. Incredible, lifesize, half-bodied flying Canada goose by Roy Conklin, Alexandria Bay, New York. This exceedingly rare Conklin flyer is in near mint condition with a small chip missing from the wing tip, mostly on the underside. The mint paint is Conklin at his best, with great feathering, and outstanding execution. There is a small flake of paint missing from the middle edge of the wing. This flying Canada goose is museum quality and a great addition to any collection. The goose is stamped with a rectangular ink stamp stating "Roy Conklin, Jr., Alexandria Bay, N.Y.", and another small ink stamp "copyright R. A. C.", and "Canada Goose" is written in pencil. 15,000-25,000

595. Rare, lifesize, half-bodied, flying blue-winged teal decoy by Chauncey Wheeler, Alexandria Bay, NY. This flyer is in excellent original condition with fine patina. This museum quality carving is signed by him in pencil on the back "Chauncey Wheeler, Alex Bay, Nov-24-1934" also handwritten "Female Teal". (Incorrect, it's a drone) Written in ink "acquired 1/14/67, from Mrs. Jas. Tousant, Chauncey Wheeler's daughter. HBE". These are the initials of Harold B. Evans – famous early upstate NY collector and writer of articles for early decoy periodicals. A flying teal decoy is pictured on page 97 in the book Chance by Harold Reiser. The decoy flyer on that page was also made by Wheeler for his daughter. 25,000-35,000
Provenance: Anthony Waring Collection



596. Life-size flying half-bodied canvasback decoy by Chauncey Wheeler, Alexandria Bay, NY. In excellent original paint with minor age crazing, a small rub to the top of the back and fine patina. The flyer is in excellent condition with very small spots of roughage along the flat/wall edge of the bird. This rare, exceeding fine carving, is very similar to the one pictured on page 91, top plate, in Reiser's book, Chance. 20,000-30,000

Provenance: Anthony Waring Collection

597. Goldeneye decoy by Stevens Decoy Company, Weedsport, NY. This 19th Century decoy is in very good condition with an old gunning patch to one side. There was punky wood under the original paint and this caused paint loss on this side around the area of the old repair. The rest of the decoy is in fine original paint with light wear. The rare hot brand on the bottom reads, "G. W. STEVENS , WEEDSPORT, N.Y. There is also a hand painted "F & P" under the tail. 6000-9000



598. **Early Stevens factory humpback bluebill drake in old gunning overpaint.** Lightly hit by shot with small chips to head and bill. 800-1200

599. **Chauncy Wheeler black duck.** Strong traces of original paint with some possible in use touch up which could possibly be removed. Tail chipped, struck by shot. Mounted on a hardwood base. 500-1000

600. **Goldeneye hen by Crandall/Nichols.** A wonderful example of a Smith Falls, Ontario decoy. Hollow carved w/ fine original paint. Head is slightly loose. 800-1200

600A. **Hooded merganser hen from Canada.** In XOC with very light wear. Structurally excellent. Carved wing and tail feathers. 500-750

601. **Redhead drake by Tom Chambers (St Claire Flats).** In original paint with light to moderate wear. Traces of original vermiculation visible. Tight crack in breast and slight separation at neck seam. Bottom has large brand of "P.H.D." 2000-3000



602. **Hollow carved St. Claire flats redhead in gunning paint, some of which may be original.** Neck slightly raised from seat and lightly hit by shot. Tiny upswept tail. Nice form. 250-450

603. **Redhead ca. 1880-1910 from the St. Clair Flats.** Hollow carved with a thin bottom board. Two tight neck checks glued in place. Very old gunning paint with flaking. Glass eyes. 400-600

Provenance: Pitt Collection

603A. **Bluebill hen by Col. Aubrey Kent of Canada.** In XOC except one eye is cracked. Balsa body with pine head. Decoy has nice lines and carved bill detail. Repair to tail chip appears to have happened during carving and is under original paint. 400-600

603B. **Rare feeding teal by Col. Aubrey Kent of Canada.** Carved balsa wood and original paint. There are a couple places where the paint is worn to wood, roughage to bottom, and one side of tail. A couple large shot scars and some touch up to paint on the breast. If you want a rare and unusual decoy for a folk art collection, this could be it. 300-500



604



605



606



607

604. Solid- bodied pintail drake decoy with a turned head and glass eyes made and used on Houghton Lake, MI in the 1920's. Good old working paint. Chips on the edge of the tail. Unusual wide body at the rear and narrow at the breast. Body is approximately 14 inches long from breast to tail. 300-450

605. Hollow lowhead carved mallard drake "attributed to George Warin, Toronto, Canada - from the Oak Lake Club, Manitoba, Canada, ca. 1890" (Ref. old collector tag on bottom). Old crazed, rubbed and worn paint appears to be mostly original. Very tiny check in bottom board and lightly hit by shot. 500-1000

606. Hollow bluebill drake ca. late 1800's by J.R. Wells, Toronto/St. Claire flats. OP with a little touch up shows light to moderate wear. In use touch up on bill. Crack in bill and heavily hit by shot on left side. 500-1000

607. Hollow redhead drake in the manner of George Waring from the St Claire Flats. Old OP is well worn. Areas of white may have been an in use strengthening many years ago. Chip to left side of bill tip and plugged knot repair in back. Lightly hit by shot. 500-1000

608. Hollow, redhead hen by J.R. Wells. Toronto/St Claire Flats. Old in use repaint with good size chip to tail tip. Head may be a replacement. Branded "J.R.W. MAKER" on bottom. 250-500

609. Pair of swimming canvasback decoys from the St. Clair Flats, Canada. In fine original paint. Both struck by shot. Drake is beautifully comb painted. 800-1200

610. Half size redhead drake by the Wildfowler factory. Bird shows moderate wear with areas of paint loss and crazing as well as blunting to tail tip. 150-250

611. Black duck from upstate New York. Nicely done decoy in good OP with painted eyes. Light wear and fairly heavy hit by shot on left side. 300-500

612. Amazing hollow carving of a black duck by an unknown maker. Carved raised wings and primaries. Head is uniquely "keyed" so as to facilitate removal. Fine OP with very minimal wear. A very interesting decoy by a masterful carver. 1200-1800



609(PR)



609(PR)



610



608



611



612





613



614



615



616



617

613. Black duck from New York with head turned slightly to right. Paint on head is original and crazed with some old repaint possible on body. Upswept tail has chips which have been glued in place. 250-450

614. Black duck decoy in good original paint with raised wings from Michigan. Probably from the MT. Clemens area. Old neck check. Glass eyes. 800-1000

615. Oversize black decoy ca. early to mid 1900's from the Milwaukee area. In excellent original very detailed original feather paint. Hollowed from the bottom. 300-500

616. Mallard drake possibly from Ogdensburg, NY. In well worn old paint. Possibly by Frank Lewis. 100-175

617. Michigan area black duck ca. early to mid 1900's. Possibly by Frank Schmidt. Stamped feather detail and distinctively carved thin tail. Old paint is mostly original with some small darkened areas. Lightly shot struck. Sliver missing off bottom of bill. 250-450

618. Black duck ca. mid to early 1900's by Miles Hancock of Chincoteague, VA. In XOP with scratch feather detail showing only light wear with rub to the top of the head. Bottom half of the bill is missing. 300-500

619. Large solid body black duck decoy from Maine with typical linear age checks and OP. Bill outline detail. Weight removed. 250-350

620. Factory black duck by the Pascagoula Decoy Co. in OP with light wear on the back and sides. Glass eyes. Working weight. 150-250

621. Factory, lathe turned black duck. Probably the Victor or Pascagoula Factory. Good original paint with moderate wear and light checking. 100-200

622. Hollow black duck of laminated construction. Well carved bill. Very good OP and condition. 50-100

623. Oversized Canada goose decoy with a slightly turned head and glass eyes by Ade Mersfelder, from Maine. XOC nicely painted with unusual and attractive form. According to the consigner, Mr. Mersefelder was the very first American POW in WW II. 250-350



618



620



619



621



622



623



624



625(PR)



625(PR)



626



627



628

624. Whistler drake possibly from upstate N.Y. OP has a few small areas of paint chipping with a "varnish" stain under right tail. A few tiny white specks on back. Structurally good. 200-300

625. Pair of pintail decoys by the late Holger G. Smith. In XOC with minor shelf wear. Both have the impressed "H. G. Smith, Decoys" brand and are signed Holger G. Smith, 22 Fairhaven Rd. Mattapoisett, Mass 1981" on the bottom. 400-600

626. Impressive oversized solid body Northern Loon decoy in XOC. Impressed "H. G. Smith, Decoys" brand and is signed Holger G. Smith, 22 Fairhaven Rd. Mattapoisett, Mass 1981" on the bottom. 400-600

627. Delicate solid body grebe decoy in XOC. Impressed "H. G. Smith, Decoys" brand. Signed Holger G. Smith, 22 Fairhaven Rd. Mattapoisett, Mass 1981" on bottom. 200-400

628. Charming hollow bufflehead drake decoy with glass eyes by Marty Collins of Wareham, MA. In XOC. Oval brand "Martin D. Collins, Decoys" on the bottom. 300-450

629. Bufflehead drake possibly from upstate N.Y. Old gunning repaint which is worn and chipped. Cracks in tail and breast with an old chip missing from top of head. 200-400

630. Whistler drake from the Quebec area. Lightly worn OP. "AH" painted twice on bottom. 200-400

630A. Whistler drake from Connecticut in old, crazed repaint. Old nail repairs to head, tight check in bottom. 200-300

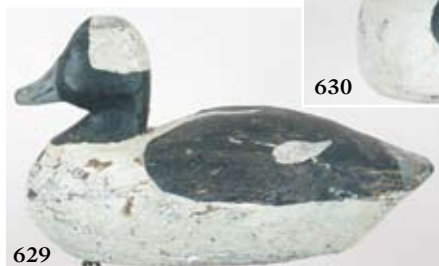
631. Attractive pair of sleeping canvasbacks by Stanley Alexander, Detroit Mich., C.1940's. Textured finish on both birds. Small rubs to OP on top of heads and at tail tips. Some touch up to white area at bottom edge of drake. Each have an "A" cut twice into the bottom. 450-650



630



631(PR)



629



630A



631(PR)



632



633



634

632. Sleeping bluebill hen by an unknown, Michigan area carver. Tail carving in the “Schmidt style”. Paint is either old original or possibly an old uniform second coat. Structurally good. Conjoined “TP” cut into bottom. 250-350

633. Superbly crafted, bold carving of a canvasback hen by Lem and Steve Ward of Crisfield, Maryland from the Pitt collection. Head turned approximately 45 degrees to the left. Wonderfully blended paint with a light texture applied to the back of the decoy. XOP is protected by a thin coat of wax or sealer. There is a very thin, tight check that runs the length of the bottom. On the bottom is the notation “-1973- T.T. Ward Bro, Crisfield, Md.” and the signature of both Lem and Steve Ward. A poem is on the bottom.

4500-6500

Provenance:
Harvey Pitt

*“I’ve lived with my friends and I’ve
Shared in their joys,
Known sorrow with all of its
Tears;
I have harvested much from my
Acres of life.
Though some say I’ve squandered
My years.
For much that is fine has been
Mine to enjoy,
And I think I have lived to my
Best,
Now I have no regrets, as I’m
Nearing the end,
For the gold that I might have
Possessed.”*

“Lem” (signature)

634. Exquisite hen bluebill by Lem and Steve Ward, Crisfield, Maryland from the Pitt collection. Head turned approximately 40

degrees to the left. Beautifully executed XOP is protected by a thin coat of sealer or wax. Structurally excellent. On the bottom is the notation “1 of 50 – 1972” and the signature of both Lem and Steve. A poem is on the bottom. 4000-6000
Provenance: Harvey Pitt

*“I’d like to sow the barren
spots with all the flowers
of earth,
To leave a path where
those who come should find
but gentle mirth;
And when at last I’m called
upon to join the heavenly throng.
I’d like to feel along my
way I’d left no sign of
Wrong”*

“Lem” – (signature)

635. Canvasback hen with head turned sharply to the right by the Ward Bros. Excellent original paint and condition. Signed by Lem and Steve on the bottom with the date “1973”. 3500-5500



635



636

636. **Redhead drake by the Ward Bros.** Balsa construction with head turned slightly to the right. OP shows almost no wear except for a few very small rubs in head area and some paint loss at neck seam. Keel removed and area filled.

3500-5500

637. **Turned head balsa bodied black duck decoy with a pine head by the Ward Brothers, Crisfield, MD.** In worn original paint with glass eyes and inset tail. Keel replaced. Stamped twice "Made by L. T. Ward & Bro Crisfield, MD" on the bottom. Signed in ink, "Steve Ward" and "Lem Ward" with "1946" date.

2200-2800

638. **Turned head black duck decoy by Ward Brothers ca 1936. Cedar body, glass eyes," Cay" Brand on the bottom.** Probably not all original. Numerous grain line checks on the back. Nice design.

2500-3500

639. **Pair of pintails by the Ward Bros., Crisfield, MD.** Both heads turned to the left. Birds are in excellent physical condition. Very light wear except for some small rubs to the top of the heads. Drake signed on bottom, "Wards personal collection - 1936" and the hen is signed "Wards - 1936" and has the "WBC" brand. From a rig sent back to the Wards that were repainted and used again.

5500-7500



639(PR)



637



638

640. **STANDING RARE lifesize widgeon drake by noted folk artist and decoy carver, Lloyd Tyler of Crisfield, Maryland.** Decoy is in outstanding original paint and condition with only very minimal rubs to the surface. Mounted on painted base with painted feet and carved legs. Pen notation on bottom of bird reads "Lloyd Tyler - 1936". Bottom of base has old inscription that appears to read "Fred W. Thomason". This is the exact bird pictured in color on page 38 in the Stansbury reference: "Lloyd Tyler - Folk Artist". An exceptional piece of folk art.

2000-3000

641. **Handsome turned head mallard drake by Joseph Kralic, (Ct.) His stamp & signature are on the bottom.** Bird is gazing downward in a feeding position. In XOC.

200-400



640



641



641A

641A. Lifesize flying Ira Hudson mallard ca. early 1900's in fine original paint has had the shiny sealer muted and been cleaned professionally by Ken Delong. This is a very desirable piece by one of Chincoteague's and America's most celebrated decoy makers and folk artists. 20,000-30,000

642. Pair of larger miniature flying mallards by Ira Hudson. The hen is 7 1/2 inches wingtip to wingtip. Old crazed paint with a deep patina. Scratch feather painting over body and wings. The miniature mallard drake flyer is 10 3/4 inches wingtip to wingtip. Carved in a turning pose. Old crazed paint with a deep patina. Excellent combination of blended and scratch feather painting. Minor separation apparent where lower wing attaches to body. 12,000-15,000



642(PR)



642(PR)



642A. Exceedingly rare working Tundra swan from the Cheasapeake bay. Decoy body is made up of three pieces of laminated wood held together with spikes. Neck and head are carved in two pieces. Decoy exhibits some overall wear from many years of use. Very old white paint appears to be the original and is discolored from age. This wonderful waterfowling artifact was used at Trumpington Plantation, Kent County, Maryland. In the 1920's Tot Willson opened a gunning club for Baltimore sportsmen out of "Holly Grove Lodge" on the Trumpington estate and this decoy dates to this period (Ref. J.G. Dolde, "Trumpington – A Legacy of Land on the Cheasapeake") Actual gunning swans from any area are extremely difficult to find. 15,000-25,000



642B. John B. Graham pattern iron wing duck decoy ca late 1800's. The original paint still remains with a little rust showing through. 500-750

642C. Swan decoy ca. 1940's with a two-piece head and neck. Glass eyes and nice carved detail on the back from Belleville, Ontario, Canada. 2500-3500

642D. RARE early ca.1900 bufflehead drake by Harry M. Shourds of Tuckerton, New Jersey. In original with old paint which is lightly worn. 1500-2500

642E. Extremely rare museum quality hollow brant decoy ca. mid to late 1800's by William "Bill" Bowman with recessed sockets fitted with taxidermy quality glass eyes. Bowman was from (Lawrence, Long Island, N.Y. and Bangor Maine). One of only 2 known brant decoys known to exist by this important maker. Both have the famous EDGAR rig hot brand. See insert. Made with an inlet head in the Maine tradition. Bowman continued to make most of his duck decoys in that manner even after settling in Lawrence, LI. many years later. There is a very old tight check in the neck. Paint has a fair amount of wear in spots but the original paint and feather pattern remain clear. See pages 42 and 43 in Gunners Paradise for information and photos of two Bowman black duck decoys made in the same manner. OPEN ESTIMATE
Literature: Gunners Paradis; Wildfowling and Decoys on Long Island by E. Jane Townsend

642F. Solid-bodied bold carving of a swimming brant c. 1880-1910 from Long Island in nice mellow old gunning paint with tack eyes. Narrow check along the center back with a little original filler showing. Two large nails on the back are missing filler above them and neck fastening nails have flaking filler. A fine example of a LI brant. 1500-2500





642G

642G. Boldly carved bluebill hen ca. 1925, by Orel Leboeuf (1886-1968) of St. Anicet, Quebec. In excellent original paint with light wear. See plate 218 on page 129 in "Decoys, A North American Survey" for a photograph of a similar hen and plate 220 on page 131 for a top view of the detailed wing and feather detail. 3500-4500
Literature: Decoys, a North American Survey" by Kangas



643



644



645

643. Rare hissing goose by Ira Hudson. Two or three checks in "snaky" neck, checks in body. Old thick overpaint by Miles Hancock is in very good condition. A decoy that exhibits the talents of two famous mid-Atlantic craftsmen. 600-900

644. Canada goose by Paul Gibson. In fine original paint with very light gunning wear. Old check in bottom of body and breast dates to time of construction with some loss of filler in this area. 400-600

645. Canada goose by R. Madison Mitchell. Nice, thickly applied OP. Tight crack in neck and multiple small checks in body. Bears "CHS" brand as well as electric pencil signature "R. Madison Mitchell - 1955" and ink "Madison Mitchell - Harve de Grace" on bottom. An early and important example by this famous Maryland maker. 400-600

646. Chesapeake bay redhead drake attributed to August Heinefeld, Havre De Grace, MD. Old gunning paint with some original and moderate wear. Tail rubs. Lightly hit by shot. 300-500

Provenance: Pitt Collection

647. Hollow sleeping swan decoy made in the Albert Laing Style by Reggie Birch. A wonderfully executed example with carved eyes and a serpentine neck that extends over the back. Very appealing weathering of the paint. A great example by an accomplished contemporary maker. 1200-1500

648. Old flying canada goose weathervane attributed to A. E. Crowell. Old weathered paint looks original. Tack eyes. Both wings have been reattached. 300-500

648A. Canvasback hen by Madison Mitchell. In XOC with light scuffs to left side of head and breast. Bottom shows a few dots of black paint as well as a 1" knot. Structurally in very good condition. 400-600

Provenance: Bartke collection

648B. Bufflehead hen possibly by Madison Mitchell. Head turned slightly to left. Near-mint original paint and condition. 700-1200

Provenance: Bartke collection



646



647



648



648A



648B



649. Early carved wing split-tailed Massachusetts sanderling ca. 1880-1900. Fine old original paint with small areas chipped to wood on right wing. Hit by shot. Baleen bill. Old ink "3" on bottom. Chip on top of head restored professionally by Steve Weaver. A delicate and delightful carving that ranks with the best. 7500-9500



649A. Early Eskimo curlew ca. 1870-1890 by Joseph Whiting Lincoln. In excellent condition. The paint appears to be original with an atypical paint style. McCleery collection stamp on the bottom. 15,000-25,000
Provenance: Congdon Collection, McCleery Collection

650. Golden plover in immature or winter plumage by Joseph Lincoln, Accord, Mass. In XOC. Struck by a few shot. Three tiny rubs to tail and a small old paint smudge in the tail probably occurred while the paint was drying. Painted tack eyes and nice patina. The number 147 is painted under the tail. 5500-7500





650A. Sanderling from Cape Cod, Massachusetts. Similar to the hollow Chipman decoys found on Cape Cod. Carved circular eyes. Very skillfully painted and carved. Purchased at the Dr. Starr boat yard auction in Duxbury, MA. back in the 1970's. 1500-2500

Provenance: Dr. Starr Collection

650B. Large, 37 ½" egret or heron carved from a single branch. Carved split tail with a large metal "spike" for a bill. Paint is weathered and crazed. 3500-5500

651. Outstanding greater yellowlegs attributed to Lothrop Holmes of Kingston, MA. Excellent, original old paint with minor gunning wear to tail, and worn to wood in a couple places. Original "stick" remains in bottom of the decoy, was shortened to one inch and drilled for a metal rod. The condition of this decoy is excellent with tack eyes and original bill. 12,000-18,000

652. Tack eye yellowlegs ca. 1900 from Hingham, MA. Attributed to Joseph Lincoln. Bill is probably an old replacement. Paint is excellent and original with light in use wear. Struck by a few shot. 1500-2500



653. Tack eye, two-piece hollow carved greater yellowlegs ca. 1900 by an unknown maker. The join is vertical, bill probably replaced. In very good condition with some restoration. 1200-1800





654. Three-piece vertically laminated painted eye yellowlegs shorebird decoy from the north shore of Massachusetts. Possibly made by Charley Hart. Paint is strong and in good shape. 800-1200

654A. Another three-piece vertically laminated painted eye yellowlegs shorebird decoy from the north shore of Massachusetts. Possibly made by Charley Hart. Paint is strong and in good shape. 800-1200

655. Classic painted eye yellowlegs from the Hingham area of Massachusetts. Carved split tail with very good original paint. Lightly hit by shot. Bill is a professional replacement by Steve Weaver. 1500-2500

656. Rare alert pose black-bellied plover attributed to Andrew Verity, Seaford, Long Island, NY. In old original paint. Professional bill replacement, touch up to breast and top sides of head by Ken Delong. 6500-8500



657. Sanderling or peep attributed to J. Henry Downs, Townsend, VA. Original paint with minor gunning wear, carved wings, and a carved H in bottom. 3000-4000

658. Two-piece shorebird by John Henry Verity, Long Island, N.Y. ca. early to mid 1800's. This is the very earliest form of shorebird decoy, occasionally referred to as the "swimming yellowlegs" or duck decoy form. Old paint appears to be the original. Very small, old, tight cracks in base of neck and near bill. In a remarkable state of preservation for such an early decoy. 7500-12,500



658



659-659A



660(4)

659. Red knot ca 1900 by Harry Shourds. Paint is original with wear. Excellent structural condition.

2000-4000

659A. Robin snipe or red knot with strong color by Chief Cuffee, Shinnecock Tribe, Long Island, NY. In XOP. Old tail chip repair, and light coat of finish feeder.

1500-2500

660. Four split tail yellowlegs flatties from Long Island ca. early 1900's. In good original condition.

400-600

661. Short-billed dowitcher ca. 1890 from Virginia by an unknown maker. In excellent original condition. Painted eyes. Narrow check runs through the left side.

800-1200

662. Short billed curlew with wings carved in relief. Several thick and thin drops of paint applied to surface make an interesting if not unique paint pattern.

300-450



661-662

THE FOLLOWING THREE CARVINGS ARE BY CAPE CHARLES, VIRGINIA ARTIST FRANK FINNEY. ALL ARE IN EXCELLENT ORIGINAL PAINT AND BEAR HIS STYLIZED, SERIF "F" ON THE CARVED BASES.

663. Ruffed grouse with head turned slightly to left. 5 ¾ inches in overall height. Tail fully fanned and raised with carved dropped wings, neck patches and crest. Nicely blended paint. Mounted on a chipped carved base.

600-800

664. Black-bellied plover with the head turned slightly to the left. 4 ¾ inches in overall height. Carved wings with detailed primaries and tail feathers. Beautifully applied and blended paint. Mounted on a carved rock base.

600-800

665. Running curlew with a delicately outstretched head, carved raised wings, and split tail. 8 ¾ inches in overall length. Mounted on a carved rock base.

600-800



663-664-665



666. Lifesize long-billed curlew by Bob White of Pa. 1983. In fine OP with a check in the right side of the body. 300-500
Provenance: X Early South shore Massachusetts collection



667. Pair of shorebirds mounted on a hardwood base by Geoffrey Skeete of Barbados (B 1930). A pectoral sandpiper and a lesser yellowlegs. Made of Brazilian cedar with applied aluminum filed wings. Fine OP protected with a coat of sealer. Birds are #6 and #10 in a limited edition. A booklet describing the artist and Barbados shorebird hunting accompanies the piece. 200-400

668. Alert Egret or Heron carved from a natural branch or root. In natural finish with an indecipherable signature on left tail which appears to be "K- - R" 300-500

669. Lifesize sandpiper with split tail. In XOC. Signed "Sandpiper, James Lapham, Dennisport, Mass" in ink on the bottom of the base. 500-750

670. Lifesize piping plover with split tail. In XOC. Signed "Piping Plover, James Lapham, Dennisport, Mass, Cape Cod" in ink on the bottom of the base. 500-750

671. Lifesize black-bellied plover with a split tail in XOC. Signed, "Black Breasted Plover, James Lapham, Dennisport, Mass" in ink on the bottom of the base. 600-900



672. Pair of miniature mallards by Lapham in XOC. Drake signed "Mallard Drake, James Lapham, Dennisport, Mass" in ink on the bottom of the base. The hen is in XOC. Signed on the bottom, "Mallard Hen, James Lapham, Dennisport, Mass" in ink. 1000-1500

673. Larger miniature reaching shoveler drake by James Lapham. In XOC. Bottom reads, "Shoveler Drake, James Lapham, Dennisport, Mass". 500-750



674-675-676



678



677

674. Lifesize calling cinnamon teal hen with split tail and open bill in XOC. Signed "Cinnamon Teal Hen, James Lapham, Dennisport, Mass" in ink on the bottom of the base. 600-900

675. Miniature reaching blue-winged teal drake with split tail in XOC. Signed "Blue Winged Teal Drake, James Lapham, Dennisport, Mass" in ink on the bottom of the base. 500-750

676. Larger miniature preening pintail drake with long split tail in XOC. Signed "Pintail Drake, James Lapham, Dennisport, Mass" in ink on the bottom of the base. 500-750

677. Mason Decoy Factory Detroit grade glass eye bluebill drake. Short narrow check on right side of body and a few rubs and dings. Otherwise in fine original paint. *Provenance:* Pitt Collection 300-500

678. Mason Factory bluebill drake with the paint restored by Ken Delong. Looks like a marriage. A Premier body with a challenge head. 200-300
Provenance: Pitt Collection

679. Mason premier redhead drake. Loss of paint on breast area. Lightly hit by shot. Appears to be an "A.S.W." brand on bottom. See page 177 in Luckey & Lewis, second plate from the top, for this exact decoy. 1500-2500
Provenance: Pitt Collection

680. Early Peterson or Mason Premier green-winged teal drake. In beautifully restored paint, possibly by Ray Schalk. Illegible name carved on the bottom. One of Mr. Pitt's favorite decoys. 800-1200
Provenance: Pitt Collection

681. Mason Factory Premier mallard hen with good original paint. Strong paint swirls on the upper body. Minor bill roughage on the edges with a small 1/4 inch piece missing on the right side. Tight check in lower left neck. In use tail chip repair with wood dough. 800-1200
Provenance: Pitt Collection

682. Standard grade Mason bluebill hen. In fine original paint with discoloration. The tail has had a substantial piece spliced on the left side of the tail. Filled check in bottom. Some small spots touched on the sides of the head. 300-500
Provenance: Pitt Collection



679



680



681



682



683. **Mason Factory Detroit grade glass eye bluebill drake.** Some filler missing in the neck seam. Nice scalloped paint swirls in the breast area. In fine original paint with light in use wear.

300-500

Provenance: Pitt Collection

684. **Mason Factory glass eye mallard drake decoy in original paint with moderate wear on the sides of the body, top of the head, and edges of the tail and bill.** Neck filler cracked and most is missing. Right side has a narrow checked filled and touched up.

300-500

685. **Mason Decoy Factory Detroit grade glass eye mallard hen in good original condition and paint.** Tight age crack and minor paint flaking on upper body grain lines. Hand painted signature under bill "W.L. Wood Jr. 1921" Identifying the decoy as from his gunning rig.

500-750

Provenance: Pitt Collection

686. **Mason Decoy factory painted eye bluebill drake with old replaced glass eyes.** Paint appears to be good original with light in use wear. Areas around the eyes worn.

300-500

Provenance: Pitt Collection

687. **Mason Factory Detroit grade glass eye mallard hen.** In XOC with very light wear. Some neck filler possibly replaced.

750-950

688. **Mason Factory painted eye broadbill model in mostly original paint.** Open check approximately 1/8 inch along with two very narrow checks on left side, both about 6 inches long. One tight lower check near the bottom.

Provenance: Pitt Collection

200-400

689. **Mason painted eye mallard drake.** In very good original paint with filler erosion on left breast. Check on the bottom. Neck filler missing.

300-500

Provenance: Pitt Collection

690. **Mallard drake by the Herter Decoy CO. in XOC.** Solid bodied cedar decoy.

200-400

Provenance: Pitt Collection

691. **Fresh water coot in XOC.** Maker unknown. Ca. mid to late 1900's.

200-350

Provenance: Pitt Collection





692



693



693A



694

692. **Freshwater coot attributed to the Pratt decoy factory.** Surface is a mixture of old gunning paint mixed with some OP. One glass eye missing. Tiny checks to back and a nail repair to neck. 300-400

693. **Frank Schmidt mallard drake.** What appears to be OP is covered with a coat of glossy sealer. Rubs to high spots and sides. Some neck filler missing and small checks in back. 300-450

693A. **Tucked head bluebill drake.** Either a special order Mason or hand carved in the mid-west in the manner of the Mason Decoy factory. Excellent structural condition with well-worn original paint. Very unique and functional form. *Provenance:* John Purvis collection 1000-1500

694. **Michigan canvasback drake by Frank Schmidt.** Very good original paint and condition with light gunning wear except for a chip with paint loss on lower right side and some loss of neck filler. Hot branded twice on bottom "W.C." 200-400

695. **Tucked head bluebill hen by Frank "Doc" Baumgartner, Houghton Lake, Michigan.** All original old gunning paint. Nice head detail with bill carving and light rasping. Chine extends to tail. Hit by shot on right side. 300-500

696. **Canvasback drake by Jim and Joseph West, Bordentown, N.J.** Four piece body construction with boat tail and very nicely carved head detail. Paint is excellent and original but has numerous tiny "varnish" drips on back of head. Structurally excellent. Signed in pencil on bottom "Made by James and Joseph West - 1952". Brass weight is stamped "J. WEST, 3(?) SEC. ST. BORD. N.J." 300-500

697. **Large redhead hen. Pencil signature on bottom states "Lou Golob" from "Washburn Maine".** Carved raised wings. Original paint shows light, even wear. 200-400



695



696



697



698. **Redhead drake** by Ed "One Arm" Kellie of Monroe, Mich. In old paint with some original paint with gunning wear with scattered small chips across back of decoy. Old ½" scar on right side, Small amount of filler missing from rear of neck and several tight checks in back. 200-400

698A. **Mallard hen** by Benjamin Schmidt (Centerline Mich.) with undercut wingtips and extensive feather carving. Tight crack in the right side of the neck. Paint is excellent. Signed on bottom in Schmidt's own hand "Benj J. Schmidt" 2000-4000

Provenance: John Purvis collection

699. **Small size mallard drake** by Ben Schmidt of Centerline, MI. Notation on bottom indicates that the bird was carved in the 1960's. Strong carving in XOC with very vivid OP. 1000-1200

700. **Sleeping mallard hen** by Ben Schmidt. In excellent original condition. 1000-1200

Provenance: Galipeau Collection

701. **Pair of bluebills** by Ben Schmidt. High head drake, low head hen. In fine original paint. with light rubs to bill tips, tails and typical high spots. Wear is more pronounced on drake which also has a few shot scars. Both bids have multiple "FB" brands/stamps. 900-1200

702. **Redhead drake** by Ben Schmidt. Overall light to moderate wear. Breast and front of head have dried and there are numerous tiny checks in these areas. Two tiny cracks in tail. 700-900

703. **Carved wing mallard drake**. Collectors information on bottom indicates the carver to be Joseph Momney from Wallaceburg, Ontario, Canada (1889-1968). OP with light gunning wear. A few tight checks on back of body. 300-500





704



705



706



707



708

704. **Bluebill drake by Reghi with head turned slightly to the right.** Working OP with minor loss on lower left side. Few small paint chips on neck and tail. Tight crack in neck.

300-500

705. **Canvasback drake by Ben Schmidt.** In excellent original condition. Two small "paint fingerprints" on lower left side and a few very small rubs to paint on top of head. Conjoined "JRN" on bottom.

1200-1800

706. **Rare high-head model redhead drake by Ben Schmidt.** OP with moderate wear to wood on small parts of back and sides. Structurally very good with "Baker" scratched in bottom.

600-900

707. **Widgeon drake by the Wildfowler factory.** Good OP with light gunning wear. Left eye missing. No stamp. It appears to be Old Saybrook vintage.

300-450

708. **Pintail hen by the Wildfowler factory.** Excellent OP with very light wear except for a small area which is blunted and showing a very tiny crack at the tail tip. Keel removed and head slightly loose.

300-450

709. **Pair of oversized Wildfowler canvasbacks.** Drake is lowhead model in fine OP. Hen is in OP with almost no wear except for a tiny horizontal "dent" on head.

400-600

710. **Cork bodied oversized canvasback drake with bottom board by Walter Ruppel, (Wisc. And Calif.).** This appears to be California vintage. Excellent OP and condition.

250-450



709(PR)



710



709(PR)



711. **Sanderling or peep ca. 1880 by Dan Lake Leeds of Pleasantville, New Jersey.** In excellent original condition with a couple small spots of discoloration. Painted eyes. Bill splined through the back of the head. Approximately 8 inches from the tail to the tip of the bill. 8000-12,000



712. **Plump resting attitude gunning black-bellied plover decoy ca. 1915 by Anthony Elmer Crowell of East Harwich, MA.** In excellent original paint showing light in use wear. Three small areas show light discoloration on the lower right neck/upper wing area and two tiny spots on top of the head. 15,000-25,000

713. **Golden plover ca. 1880-1900 by Joseph Whiting Lincoln of Accord, Mass.** One of the best decoys from the Portsmouth, RI, rig found in the late 70's. This is the only one found with an original bill. The original mounting stick is included with this decoy. 7500-9500

714. **Ruddy turnstone shorebird decoy ca. 1900 in near mint original condition.** In bold breeding plumage. Possibly by Jonas Sprague, Beach Haven. New Jersey. Carved wings with wing tip detail. An exceptionally well carved shorebird decoy. 9000-12,000





715. Lesser yellowlegs ca. 1880 by Lou Barkelow of Forked River, New Jersey. ca. Bears the Mackey collection stamp on the belly. L B is impressed into the left side of the body. In excellent original condition. A rigmate to the yellowlegs pictured in the foreground of "American Bird Decoys" in plate 102 on page 120. 25,000-35,000

716. Cape Cod split tail golden plover ca. 1900 with painted eyes. In emerging plumage. Extremely well painted featuring brushed and scatch feather painting. In excellent original condition showing light in use gunning wear. 2500-4500



717. Hingham school golden plover in attractive old original paint. De-accessed probably from the Shelburne Museum. The numbers 1927-62 are printed in white ink on the left lower wing area. Bill professionally replaced. Tack eyes. 1500-2500

718. Long-billed dowitcher ca. 1890-1910 from Martha's Vineyard. Bill professionally replaced by Steven Weaver. In fine original paint with in use gunning wear overall. Multiple stick holes. Struck by shot. Good vivid plumage pattern. Painted eyes. 1500-2200

719. Yellowlegs ca. 1890-1910, from a Martha's Vineyard gunning rig. Bill professionally replaced by Steve Weaver. Eyes are made from shoe buttons or glass. Lightly hit with possibly number 8 shot. Made in the manner of Hingham school decoys. 1500-2500





720. Massachusetts golden plover ca 1900 in very good original with a little old in use touch-up. A so-called Morton type. The “C. Gardner” brand is on the bottom. Possibly made for Doctor Clarence Gardner of Gardner & Dexter, from Little Compton, RI. 1800-2200
Provenance: Joe French Collection

721. Yellowlegs in old dry worn original paint by George Boyd of Seabrook, NH. Several tight grain line checks start in the breast and go into the upper body towards the tail. One is slightly open. A wonderful honest old relic by a New England master decoy maker. 1000-2000

722. Wind plover decoy ca. 1900 from Hingham, Massachusetts. Uniquely hollowed through the bottom, (two holes), and once from the end of the tail into the body. It is in excellent original condition with in use wear. Carved circular eyes. 1500-2200

723. Golden plover ca. 1880 attributed to Lothrop Holmes by many veteran collectors. In old worn original paint. One tack eye is missing. An old chew mark is on the top of the tail and left side of the head. 1500-2500

724. Early golden plover ca 1880-1910 from Massachusetts. A so-called Morton type. In excellent original paint with very light in use wear. Struck lightly by shot. Very old in use repair with three tiny tacks to a chip on top of the head. 1500-2500

725. Hollow carved golden plover with painted eyes ca. 1880 from Nantucket, Mass. Made by the Coffin family. Lots of green/gold dots dripped and splattered in a random pattern. The decoy is as close to mint as any we have seen from this early period. 2500-3500

726. Early two-piece solid bodied golden plover ca. 1880 from Nantucket, Mass. in vivid breeding plumage. Struck by either size 8 or 10 shot. In excellent original paint with the in use wear found on 120 year old gunning shorebirds. 1500-2500





727-728



729-730

727. **Yellowlegs with painted eyes ca. 1900.** Possibly from LI or New Jersey. Iron rod bill with a blunt tip. Made from hardwood. Paint appears original with a few dents on the back. There a few rubs and minor surface dings. 800-1200

728. **Early ca. 1880-1900 golden plover runner in old worn and flaking old paint with original attributed to Parker Hall from the Hingham, Marshfield area of Massachusetts.** Old original bill. Stick hole filled in with wood dough or putty. Glass bead eyes with a tack through the center. 600-900

729. **Early yellowlegs ca. 1860 by Ephraim Hildreth (1830-1915) from Rio Grande, New Jersey.** Struck by shot. Tack eyes. Bill may be a replacement. 1200-1600

730. **Yellowlegs ca. 1910 from Hingham, Massachusetts.** Struck by a few shot. Paint is original and in good condition. 800-1000

731. **Mason Factory glass eye crow decoy.** In fine original condition. 2000-3000

732. **Mason tack eye yellowlegs decoy in excellent original condition.** Struck by a couple shot. A few surface imperfections consistent with antiquity in spots. 4000-5000

733. **Mason Factory tack eye robin snipe in excellent condition with paint enhanced by Paul Fortin.** 800-1200



731-732-733



734-735

734. **Split tail willet with painted eyes made in 1914 by Louis Ouelette of Salem, Mass.** Faintly dated 1914. "L O" is punch stamped into the breast. Two willets were given to the Peabody-Essex Museum by Mr. & Mrs. St. Pierre several years ago. Hit by a couple shot. Fine original paint with age imperfections. 1200-1800

735. **Split tail willet with painted eyes by Louis Ouelette of Salem, Mass.** Mr. Ouelette moved from Canada to Salem about 1900. This decoy has the date 1914 clearly written on the breast and his initials "L. O" in script as well. L O is also stamped into the upper breast. Struck by a couple shot. Original paint with age discoloration in spots. 1200-1800

736. **Tin folding yellowlegs in excellent original condition.** Couple minor marks. Wear on the lower piece that fits into the metal sleeve on top of the stick. 100-200



736



737. Yellowlegs with tack eyes ca.1860 by Ephraim Hildreth of Rio Grande, New Jersey. Old repair to a neck break with two nails. Struck by a few shot. Moderate gunning wear. Bill probably an old replacement. 1200-1600

738. Yellowlegs with tack eyes ca.1860 by Ephraim Hildreth. Struck by shot. Surface has very nice crazing and patina. Minor gunning wear. 1200-1600

739. Dowitcher from the Virginia coast. In XOC. Shot struck. In old original weathered paint. Bill possibly an old replacement. Looks like it was carved from an old piece of cedar with original worm holes. 500-750

740. New England black-bellied plover in old paint. In good condition. Several shot marks throughout. Stringing hole in tail. 500-750



741. Lumbeyard yellowlegs ca 1910. In XOC except where overpaint is flaking to the original on the breast. Typical eye groove with possibly a shoebutton of tiny wax eye. Struck by shot. Bill probably an in use replacement. 600-900

742. Black-bellied bullhead plover from VA or southern New Jersey. Old original paint is weathered and worn to wood. Struck by shot. Bill possibly original. 800-1200

743. Virginia curlew with carved wings. In weathered paint. Newer glass eyes and bill has been reglued. Probably not a period decoy. 300-500

744. Greater yellowlegs ca. 1880-1910 from Virginia with the original bill. Shot struck mostly on one side of the breast. Carved V shaped primaries. Small chip off tip of primaries, and two larger chips off the top of the tail. Eyes may have been made of sealing wax. Bill may be the original. 800-1200

745. Split tail shorebird ca. 1900 from the Duxbury area of Massachusetts. Carved in a running pose. Once had two legs. Traces of original dark paint with a majority of the surface worn to bare wood. 700-900





746. South shore Massachusetts sandpiper ca. early 1900's with carved wings and split tail. Very old paint may have been covered with a sealer of some sort which is crazed. Feathers stuck to the bottom. Old stick hole partially filled. 2500-4500

747. Black-bellied split tail plover ca. 1900 from south shore, Mass. Painted eyes. Struck by shot. Bill has a small chip out of the bottom towards the tip of bill. Two mounting holes in the bottom enable the decoy to be either upright or running. Original paint with wear to wood in a couple places. X Duxbury boat yard sale. Bears the Dr. Starr collection ink stamp is on the bottom of the bird. 1200-1600

748. Golden plover with glass eyes and carved wings and a split tail by Robert E. Litzenberg of Elkton, MD. Signed and dated 1975 on the bottom. 200-300

749. Mason factory crow decoy ca 1900 with glass eyes an incised bill detail. Tip of bill slightly blunted. Light gunning wear. In very good original paint. 1500-2500



750. Yellowlegs by Hurley Conklin, Manahawkin, NJ. In XOC. No signature. 300-500

751. Curlew decorative by Hurley Conklin of Manahawkin, New Jersey. Mounted on a carved wooden base. In excellent original condition. 400-600

752. Lifesize Curlew decorative ca. mid to early 1900's by Alfred Gardner of Hingham, Mass. In excellent original condition with a metal painted bill. Tiny ding on the end of the primaries. 600-900

753. Mini feeding black-bellied plover by William Gibian. Carved wings and wing tip detail. In XOC. Conjoined "WG" carved under tail. 300-500

754. Mini red knot by William Gibian. Carved wings and split tail. Excellent original condition. (XOC) Stylized "G" carved under tail. 300-500



755. **Lot of 2.** A miniature mallard by Lawrence Lutz of Brighton, CO together with an alert pintail drake. 75-125

756. **Miniature goose ca. 1930** by John Glen of Rock Hall, MD. In XOC. 150-250

757. **Miniature redhead ca. 1930** by John Glen of Rock Hall, MD. Neck broken and reglued otherwise in XOC. 150-250

758. **Pair of half lifesize canvasbacks mounted on an oval wooden base.** Made by Capt. Harry Jobes. Hen has a knot on lower left. In XOC. 100-200

759. **Miniature egret by William Gibian from VA.** Grain line check in upper neck. In XOC. 200-300

759A. **Miniature great blue heron in XOC** by noted folk carver William Gibian. 300-450

THE FOLLOWING FOUR LOTS ARE BY THE LATE ROBERT MORSE OF ELLSWORTH, MAINE. THE CARVINGS ARE ALL OF EXCEPTIONAL QUALITY. IT IS ALMOST IMPOSSIBLE TO FIND WADING BIRD CARVINGS BY MR. MORSE AND THESE ARE AMONG HIS RAREST WORKS.

760. **Extremely rare white Pelican miniature** by Robert Morse. Well carved wings, detailed bill carving. Excellent original paint and condition. Signed R. Morse on the top of the base. 1800-2200

761. **Wood Ibis with finely carved down swept bill and drop tail.** Excellent original paint and condition. Signed R. Morse on top of the mount. 1800-2200

762. **Sandhill crane with carved thighs and drop tail.** Excellent original condition. Tight check in neck glued and touched up professionally by Steven Weaver. Signed on the base. 1800-2200

763. **Drop wing, "Reddish Egret" by Robert Morse of Ellsworth, Maine.** Delicate "S" shaped neck. Excellent original paint and structural condition. 1800-2200
Provenance: Joe French Collection





764-764A-765



766



765A-765B-765C

764. Miniature white throated sparrow by Robert Morse. Very detailed with tiny glass eyes and signed "R. Morse" in ink on the top of the base. Very tip of the beak and tip of the tail touched up. 1000-1400

764A. Miniature meadowlark on a driftwood base by Robert Morse. Very detailed with tiny glass eyes and signed "R. Morse" in ink on the end of the base. Tip of beak has a tight check that was glued and touched up professionally by Steven Weaver. 1000-1400

765. Larger size miniature black duck mounted on a carved rock base by "Square" Morence Gould of Cape Cod/Maine. Signed within a penciled square "M. H. Gould, Cundys Harbor, Maine. '84". Gould carved with his mentor Elmer Crowell during the mid 1900's. 350-550

765A. Miniature mallard drake with tiny glass eyes on a carved wooden base by George Winters in XOC. Ink stamp on the bottom reads "made for Abercrombie and Fitch by George Winters". Winters lived in upstate NY and carved miniatures for sale in the NYC store and by catalog. 300-500

765B. Miniature mourning dove with tiny glass bead eyes, sitting on a branch mount by George Winters in XOC. Beautifully painted. Signed "G. Winters, '72" in red ink on the bottom of the base. Probably made for Abercrombie and Fitch in NYC. 300-500

765C. Flying miniature mallard drake on a driftwood base by Russ Burr, Hingham, MA. Beautifully carved with outstretched wings, a tail curl and tiny feet. Professional restoration to a crack on one wing. 550-650

766. Miniature group of three snowy plovers mounted on driftwood. In XOC in all respects. Signed twice on the mount. The bottom has a sticker that reads "Snowy plovers by H. L. Crandall". 1800-2200

766A. Miniature flying mallards in XOC by A. E. Crowell. The drake has a tiny chip on the inside of the tip of the tail which goes against the wall. Both have the impressed rectangular stamp on the back side. 3500-5500

767. Miniature Lapland longspur by Blackstone in XOC. Signed "Lapland Longspur" on the bottom in pencil. 900-1200

768. Miniature oriole by Blackstone in XOC. "66, Oriole" and the typical "JB" signature in ink on the bottom of the base. 900-1200

769. Miniature kinglet by Blackstone in XOC. "190, Kinglet" and the typical "JB" signature in ink on the bottom of the base. "Golden Crowned" is also written in another hand. 700-900



766A



767-768-769



770-771-772-773



773A-773B(2)



774(PR)-775



776-777-778

770. **Miniature harlequin drake by Blackstone in XOC.** “659, Harlequin Duck” and the typical JB signature in ink on the bottom of the base. 900-1200

771. **Miniature bluebird by Blackstone in XOC.** “298, Bluebird” and the typical “JB” signature in ink on the bottom of the base. 700-900

772. **Miniature nuthatch by Blackstone in XOC.** “171, Nuthatch” in ink on the bottom of the base. 450-650

773. **Miniature wood duck drake with carved raised wings and very attractive mellow paint.** “No. 5”, “Wood Duck, ¼ life size” and “MC” on the bottom in ink. 300-500

773A. **Lifesize chickadee by Jansson.** Bottom hot brand reads, “R. G. Jansson, Cape Cod”. Also the initials EWF are on the bottom. 300-400

773B. **Lot of 2.** A Miniature mallard carved in the form of a decoy by Jess Blackstone. Carving has detailed wings and appears to have once been mounted on a box. Excellent OP with very light wear. Break in neck has been poorly reglued. Miniature goose carved in the form of a decoy by Jess Blackstone. Appears to once have been mounted on a box. Tiny chip to paint on back. Neck is cracked and loose and there is an old repair to the bill. 450-650

774. **Pair of decorative miniature Pintails by Dan Brown, Salisbury, MD.** In XOC. Base reads “Dan Brown, Salisbury, MD, 1969” 400-600

775. **Rare and exceptional miniature feeding yellowlegs by Russ Burr.** In XOC. Carved secondary and primary feathers and the base is stamped twice with his ink stamp brand “Russ P. Burr, Hingham, Mass” 800-1200

776. **Miniature hooded merganser drake by Gibbs in XOC.** Signed “H.N.Gibbs, 1968” in pencil on the bottom. 600-900

777. **Miniature whistling swan in XOC on a driftwood base by Gibbs.** Signed “HNG, 1955” in pencil on the bottom of the base. 600-900

778. **Plump Miniature blue-winged teal drake by J. Ahearn.** Signed “J. Ahearn, Blue wing Teal” on the bottom of the base. 400-600

779. **Three flying mallard miniatures ca. mid to early 1900’s by Charley Hart of Marblehead, MA.** 1500-2500



779



THE NEXT FOLLOWING SANDERLING DECOYS CA. 1900 ALL HAVE THEIR ORIGINAL IRON STICKS PERMANENTLY INSERTED INTO THE BOTTOM. THEY ARE IN ORIGINAL PAINT WITH GUNNING WEAR AND THEY ARE $\frac{3}{4}$ OF AN INCH THICK AND 7 $\frac{1}{2}$ INCHES LONG FROM BILL TO TAIL. THE BILLS ARE REPLACED PROFESSIONALLY. SOME OF THE HEADS ARE CARVED IN THE ROUND.

779A. Three very nicely carved sanderlings ca. 1900 with painted eyes. The heads are carved in the round and the sides are flat. 900-1200

779B. Two sanderlings from the same rig as above. 600-900

779C. Two sanderlings from the same rig as above. 600-900

779D. Early yellowlegs, ca. 1900 from New England. Carved raised wings and tail. Fine, crazed, original paint with old white gunning repaint on the breast with in use wear. Lightly hit by shot. Carved "D.H." in bottom. There are two stick holes to vary the pose. 800-1200

779E. Antique lifesize "Bowman" style yellowlegs decoy glass eyes, carved wing outlines and split tail by noted Cape Cod carver Steven A. Weaver. Signed on the bottom "Steven A. Weaver, Cape Cod, SAW, 2007" 650-750

779F. Antique style life size least sandpiper with carved wings, glass eyes, a split tail and exceptionally detailed paint by noted Cape Cod carver Steven A. Weaver. Signed on the bottom "Steven A. Weaver, SAW, Cape Cod, 2007" 350-450



779G



779H



779I



779G. Elegant black bellied plover with carved and raised wings and split tail in the Crowell style by Dave Ward, Essex, Conn. XOC and branded "D.B.W". 600-900

779H. Feeding dowitcher by Dave Ward, Essex, Conn. Carved raised wings and split tail. XOC and branded "D.B.W." 600-900

779I. Curlew carved after the Mason Factory Sickle-bill model by Phil Fairbank. See page 20 in the 1963 October/ November/ December issue Decoy Collector's Guide for photographs of a similar curlew and other shorebirds in use on the Connecticut shore by Phil Fairbank Jr. Mr. Fairbank shot decoying shorebirds in the 50's and 60's with his camera. 900-1200

779J. Macaw on a swing perch by Shang Wheeler of Stratford, Conn. Approximately 27 1/2" from top of head to base of tail. Carved from multiple pieces of wood which have been laminated together. This is a very detailed carving with clasped feet, an open mouth, primaries, and long multiple carved tail feathers. Bold vivid original paint and painted eyes in brilliant colors typical of the species. A few tiny rubs to the paint. Minor chips and rubs on the tail edges with a slightly larger chip to the right wing tip. Signed behind the right leg, "To Missy (illegible) Shang". The signature and carving have been examined by Simon Parks, Art Conservation Inc., New York City, NY. He determined that the signature is period to the piece and did not appear to be tampered with in any way. Two documents from William Bourne formerly of Richard A. Bourne Galleries and Ken Delong, restorer, indicate in their opinion the lifesize Macaw is by "Shang Wheeler". All three documents are available for viewing. OPEN ESTIMATE

779K. Pair of outstanding lifesize white herons by Douglas Hopkins of Osterville, Mass. with carved primaries and glass eyes. Detailed bill carving, subtle colorations on the wings. Both average 29 inches wingtip to wingtip and 24 inches bill tip to tail. Both have serpentine necks with both necks turned to the right. In XOC with minor imperfections on the wingtips of one heron. 500-1000

779J



779K(PR)



779K(PR)





780-781



782-783



784

780. **Cock pheasant with highly detailed feather carving by Gordon Clark Jr. of Yarmouth, Mass.** In near mint condition with chip off the end of tail. Signed on the bottom, Gordon Clark, Yarmouth, Mass. 1982. 400-600

781. **Lifesize Wilson Snipe by Peter Peltz of East Sandwich, MA.** Head turned sharply to the left. Detailed carved wing and primaries. Mounted on a wooden oval base. Signed on the bottom "P. Peltz, Wilson Snipe". 500-750

782. **Lifesize least sanderling probably by Peter Peltz, unsigned.** Delicately crossed wingtips. In excellent original paint. Head turned right. 200-300

783. **Bufflehead drake by James Ahearn, master miniature waterfowl carver.** In XOC with a couple tiny rubs. Nice patina. Very detailed wing carving. 300-500

784. **Pair of cardinals mounted on a hand carved tree with two open mouthed chicks in nest.** In fair condition with paint loss and crazing. Bottom reads, "Made for Benson & Smith LTD. U.S.A". 150-250

785. **Pair of decorative blue-winged teal.** In XOC with one foot loose and glued to the mount. Signed on the bottom, "Blue Wing Teal by my hand, Joe Anderlik, Lac Du Flambeau". 1200-1800

786. **Lifesize green-winged teal hen guarding her nest with four eggs and one hatchling.** In excellent original condition. On an octagonal environmental mound. About 14 inches wide X 13 inches deep. Signed by the artist on a pebble. "J. Robison" of Pekin, IL. 1200-1800

787. **Miniature mallard drake with tiny glass eyes on a carved wooden base by John Davis.** Bottom reads "Mallard by John E. Davis, Berlin, NH" XOC. 200-300

788. **Miniature Canada goose with tiny glass eyes on a carved wooden base by George Winters in XOC.** Tag on the bottom reads "#151 CANADA GOOSE by George Winters". Probably made for Abercrombie and Fitch in NYC. 300-500

789. **Beautiful veneered hinged top trinket box with inlaid design with a miniature decoy model mallard drake by A. E. Crowell attached to the lid.** Box measures approx 4" wide by 2 3/4" deep by 2" high. Minor damages to veneer with a few slivers missing. Bird in XOC. Circular blue paper label on bottom reads "A. E. Crowell and Son, Bird Carving, E. Harwich, Mass". A delightful example of his work. 1200-1500



785(PR)



786



787-788-789

790-791-792



790. Folky lifesize black capped chickadee with glass eyes on a carved wooden base made in the style of A. E. Crowell by noted Cape Cod carver Steven A. Weaver. Dropped wings and nicely detailed paint. Signed "A. E. Crowell Style Chickadee, Steven A. Weaver, SAW, Cape Cod" on the bottom of the base. 550-650

791. Miniature decoy model Martha's Vineyard red-breasted merganser drake with wonderfully detailed paint, glass eyes, and a tiny rigging screw eye by noted Cape Cod carver Steven A. Weaver. Signed on the bottom "Martha's Vineyard, Merganser, by Steven A. Weaver, Cape Cod, SAW, 2006" 400-500

792. Content miniature decoy model mallard hen by Ken Harris, Woodville, NY. Beautiful scratch painted with mellow patina. Tiny rub to the tip of the tail. Stamp on the bottom reads "Made by "Ken" Harris, Woodville, NY". 400-500

793. Large miniature quail in excellent original condition with a small dent on top of the head. Mounted on a piece of burl. Signed on the bottom "F. M. Kilburn, Waldoboro, Maine". 350-450

796(PR)



797



793



794(2)



795



794. Joel Barber cast aluminum canvasback decoy paperweight and a wooden and milk glass Tobacco/cigar Humidor with a cast aluminum miniature Merganser. Dr. Starr and Joel Barber were noted pioneer decoy collectors, carvers and authors who carved wood patterns and made aluminum castings from them. 350-550

795. Bluebill drake attributed to Dr. Lewis Webb Hill. In XOC. Wingtips carved in relief. Mounted on a rectangular wooden base. Base is 8 1/2 inches long and the bluebill is 7 inches or about half lifesize. 300-500

796. Pair of red-breasted mergansers by the late Cape Cod native "Square Gould". "Square moved to Maine later in life. The hen is in a sharply turned feeding position. Bottom reads inside a chiseled square, the carved signature, "M H Gould". "Harps well, Maine 7/92" is written in ink. The drake is signed in the same manner. Both are in excellent original condition with detailed feather and wing carving. There are a couple of tiny chips off the right and left feathers at the edge of the tail. 400-600

797. Bluegill or Sunfish and often called a punkinseed by "Square Gould". Carved inside a chiseled square is the carved name "M H Gould". In ink is written Harpswell, Maine 1/93 Sunfish Punkinseed". 400-600

798. Perch by "Square Gould". In excellent original condition in all respects. Signed in a chiseled square, "M. H. Gould Harpswell, Maine, 6/93". 400-600

798





799. Stunning wood duck drake lifesize carving by Keith Mueller, S. Meriden, CT XOC. Hot branded MUELLER signature on bottom of carving. 2000-2500



800. Carved and painted freshwater bass on a plaque (24" X 10" overall). Nicely detailed carving with some light crazing to the paint. 300-500



801. Well executed chip carving of a Walleye on a oval oak plaque, fish measures 24" long. Fish is probably of Wisconsin origin. 300-500



801A. Rectangular painted wooden sign from the Plaistow N. H. Fish & Gun Club. 300-500

802. Early ice fishing decoy from Lake Chataqua. Seven inches long. The fins are made of metal and the tail of leather. 2000-3000

803. Early ice fishing decoy from Lake Chataqua. Six and 3/4 inches long. Metal fins, leather tail. Nicely carved mouth and gills. 800-1200

804. Very early ca. 1880 small oval swing handle Nantucket lightship basket (10 1/4" L X 7W X 4"D) by William D. Appleton who actually served on the Nantucket lightship. Nice old patina with one tiny area of damage near bottom board. 3000-4000



804A. Hollow canvasback pair by an unknown carver. Found in California. Appears to be Herter factory heads or hand made after Herter. Very good original condition. 300-500





805



806(PR)



807(PR)



808

805. **Bluebill drake ca 1900, football style, by Ira Hudson of Chincoteague, VA.** Paint restored expertly by Cameron McIntyre. 600-900

806. **Pair of bluebills by Henley Sorbey, Canada, in good original paint.** Attractive pair with light wear to hen and moderate wear to drake. Drake has small sliver of wood missing from back. Drake branded "S.V.K." Pictured in Bernie Gates book, "Ontario Decoys". 750-950

807. **Bluebill pair from Canada.** In good original paint. Rigmates yet made with two different size eyes. Light to moderate wear. One has tight neck crack with shot hits. Other bird has "puppy chew" marks to head. 750-950

808. **Redhead drake by Harvey Davern.** Paint appears to be mostly original with some possible touchup to head. 600-900

809. **Very nicely carved bluebill hen or possibly a ringbill by Cliff Woodcock of Peterborough, Ont.** Fine OP with one tiny chip missing from lower left bottom edge of decoy which does not detract from the overall appeal. 400-800



809

810. **Alert, black duck decoy with carved wings by Dr. Woods, Orillia, Ont.** Exemplifies his somewhat unique treatment of the base of the decoy to increase stability. In excellent original condition. 1400-1600

810A. **Black duck by Ferman R. Eyre (1882-1969), Gananoque, Ontario.** Nice original scratch feather paint with light wear to bill tip and a few other tiny areas. 300-500



810



810A



811. **Goldeneye hen by Buck Crawford.** In good condition with old in use paint together with some original. 300-500

812. **Canvasback hen by the Peterborough Canoe Co.** Good original condition with light wear and rubs. 400-500

813. **Hollow redhead drake by Addie Nichol.** OP with some gunning wear. Head slightly loose, otherwise excellent physical condition. 600-900

814. **Black duck ca. 1890-1910 by Sanford Gorsline from Belleville, Ontario.** Old in use repair with filler to the right side of the tail and the right lower side of the neck. Chip out of the left bill tip and just below. In original paint with moderate to heavy gunning wear. Hollow with a 3/8 inch bottom board. See B. Gates, Ontario Decoys, page 116 for more information. 800-1200

815. **Rare, oversize Canada goose ca early 1900's from Prince Edward Island, Canada.** Fine original paint on head, neck, breast, and under tail. Back and sides of decoy have been painted a black/ dark green color and this appears to be the original paint. Neck may have been reattached. Couple small tail chips. Some light in use wear. A beautifully carved decoy with lines from hand shaving clearly evident. 1200-1800

816. **Hollow brant decoy by Slim Cameroon.** In very good condition with areas of gunning overpaint. 300-500

817. **Swimming roothead brant by John Brooks, ca. 1915.** In good OP (original paint) with light to moderate wear. Small check on back and on rear of head. Original tool marks visible. 500-750

818. **Whistler hen by George Bacon, Burlington, Vt. Ca. 1900.** Paint appears to be original with light to moderate wear. Structurally excellent. Bacon was Vermont's premier carver and decoys by him are very rare (see Harrell pg. 11). 1000-1500

Literature: The Decoys of Lake Champlain by Harrell





819



821

819. **Bufflehead drake by Gerald Tremblay of Burlington, VT.** Nicely carved wing detail. In original paint with in use touch up and wonderful patina and crazed surface. The sides of the tail have some wood loss. 600-900

820. **Full-bodied black duck ca early 1900's in excellent original condition by Charles Hart of Marblehead, MA.** Paint exceptionally bright and crisp. Hollow carved with the bottom open. This unique design created a vacuum which helped keep the decoy "tight" to the water. 5500-8500

821. **Bluebill hen ca. early 1900's by Russell Pratt Burr of Hingham, Mass.** Gunned over in Orleans, Massachusetts, on Baker's Pond, Cape Cod. All original with a few imperfections. May have a coat of sealer on the surface or it is simply painted with a high gloss finish. This is his best grade of duck decoy and the only bluebill we are aware of in this grade. Few are ever found. About a half dozen of his best grade wooden decoys are known. Two geese, three black ducks, and this bluebill. 5500-7500



820



822

822. **Oversize (24" overall) to the extreme is the best way to describe this elegant swimming merganser hen ca. 1900.** Loose neck check. Attractively worn original paint. Carved eye groove in the upper head accent the position of the eyes. The body, struck by shot, is made in three laminations. Some say they were made by the Bailey's of Kingston, Mass. and there is speculation they were made for the Rockefellers by the family caretaker. 1200-1500

823. **Swimming black duck ca late 1800's to early 1900's.** Found in Chatham on Cape Cod by Doctor George Ross Starr. Old paint shows gunning wear with chip in tail which may be original or it possibly has in use repaint. Lightly hit by shot. X. Starr Collection lot 603. The Starr collection stamp is on the bottom. The ridges or chines on the sides and the general shaping of the body indicate boat building expertise. 2500-3500

824. **EARLY bob-tailed black duck carved with that early rocking horse look.** Circa mid to late 1800's, Martha's Vineyard. X Doc Starr collection, lot 605. Neck has old crack or mid neck join. Very early rugged folk art. Bears Starr Collection stamp and label. Wonderful example of an early hand chopped primitive. 600-800



823



824



825



826



827

825. **Black duck ca. early 1900's with a feeding head that will swivel almost 300 degrees side to side.** Body made similar to those decoys made on Martha's Vineyard or just south of the Vineyard in Wareham or Cape Cod. In XOC with light in use wear. 500-700

826. **Early Wildfowler black duck.** Possibly made by Ted Mulliken as a presentation piece. In XOC. The top of the decoy has a hinged lid that can be opened. 500-750

827. **Merganser hen low-head swimmer from Martha's Vineyard or the north shore of Massachusetts.** In mostly excellent original paint with wear and in use touch up. The neck join has been touched up as well as a long check running mid body from behind the head to the tail. 1500-2500

828. **Rare pair of black ducks possibly by George Whittemore (1859-1954) of Newburyport, MA.** Head carving influenced by the Mason challenge grade black duck design. Heads turned one right and one left. Bodies laminated vertically in five pieces and possibly hollow. In very good OP with very minor separation along some of the body seams. Some surface crazing. 1200-1500

829. **Extremely rare oldsquaw drake ca. late 1800's from Kingston, Mass.** In old weathered repaint over original. Obviously made in the Kingston, Mass, style. Likely by a member of the Holmes or Bailey families. Great sculpture. 1500-2500

830. **Solid-bodied Canada goose decoy ca. early 1900's by Joseph Lincoln, Accord, MA.** In good old working paint with OP. Moderate to heavy surface wear with typical wide check in the bottom. Numerous thin age checks on the sides and back. Old neck crack reglued. Sliver chip off the underside of the bill. A small area of dry rot on the surface of the left side at the water line. Honest old working decoy. 2000-3000



828(PR)



828(PR)



830



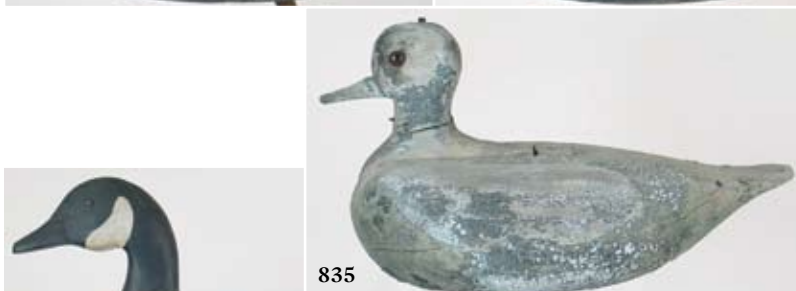
829



831



832



833



834

831. Bluebill hen ca. mid 1900's to early 1900's with head turned slightly to the right by Keyes Chadwick, Oak Bluffs, Marthas Vineyard, Mass. From the "Foote" rig and so branded. Some original paint remains. The old paint has areas of wear to primer and/or wood. Old crack in neck, small chip on top of head and small flat area on back. 400-600

832. Bluebill drake ca. 1930-1940 by Keyes Chadwick, Oak Bluffs, Martha's Vineyard, Mass. In gunning over-paint with moderate wear. Hit by shot. 400-600

833. Bluebill drake by William Dugan, Martha's Vineyard, Mass. Paint is mostly worn original with some small areas of in-use touchup to the white. Head has been reglued with glue showing and there is a small check in the back. Dugan copied Chadwick and there are obvious similarities in their work. "W.E. DUGAN" stamp on bottom. 500-750

834. Canada goose ca. 1900 from Marshfield, Mass. In fine original paint with light in use wear. 1500-2000



837



838



833



836

835. Petite and folky oldsquaw relic ca. 1900 from Maine with a deeply inletted head and neck. Only vestiges of original paint remain. Check in neck with an old nail repair. X collection of a south shore Mass collector. 200-400

836. Tiny hollow Duxbury goldeneye decoy ca. 1900. Old gunning paint with original. Moderate wear. Great form in a content little decoy. 300-500

837. Turned-head solid-bodied black duck ca early 1900's with glass eyes and a carved tail from the famous Brayton Rig. Carved by A. E. Crowell, of E. Harwich, MA. A few dents and a small knot. Paint restored in the Crowell style. 1500-1800

838. Sleeping goldeneye hen ca. early 1900's from Up-state New York. Lightly crazed old paint with original in very good condition. Structually good condition. 300-500

838A. EXTREMELY RARE mallard hen ca. early 1900's by Mark Alcide Comardele (1880-1955) of Des Allemands-Bayou Gauche, Louisiana. One of Louisiana's most celebrated market hunters, guides, and decoy makers. See pages 106 to 109 in Lures & Legends for information and photographs of this important carvers work.

OPEN ESTIMATE

Literature: Louisiana Lures and Legends by Brian Chermic



838A



838B



838C



838D



838E

838B. Pintail drake by James Curtis Roussell of East New Orleans, Shell Beach, Louisiana. Beautifully executed OP is in a very high state of preservation. Graceful upswept tail and finely carved bill. Small area of roughness to left, underside of bill. Has artfully carved "JCR" in bottom. 2000-3000

Literature: Louisiana Lures and Legends by Brian Cheramie

838C. Mallard hen with pinhead eyes by Clemet Eustas of Louisiana. Moderate wear, mostly on the right side. Area of roughness on right base of bill and small area on rear of head which may be original to the carving of the bird. Conjoined brand for the Hanneman collection branded on the bottom reads "JH N.O. La". 2000-3000

Literature: Louisiana Lures and Legends by Brian Cheramie

838D. Mallard drake by Jack Couret (1881-1967) in original paint. Head turned slightly left. Wings are relief carved. Surface has a fair amount of gunning wear. Glass eyes. Two ink brands on bottom are, "STEWART -----". Second name illegible. 800-1200

Literature: Louisiana Lures and Legends by Brian Cheramie

838E. Mallard drake by Hyacinthe "Te-Te" Jack Scobel (1877-1961) of East New Orleans, Shell Beach, LA. Some fairly heavy rubs to paint from use but overall appearance is very good. One or two shot marks. See pages 264 and 265 in Lures & Legends for information and photographs of some exceptional decoys by this maker. 2000-3000

Literature: Louisiana Lures and Legends by Brian Cheramie

838F. Primitive teal drake from Louisiana. In old original paint in excellent condition with a few rubs and dings. 100-200

839. Bluebill drake by C. R. Wells, Connecticut. In a combination of OP and working repaint. Structurally excellent condition. 300-500

840. Hollow black duck decoy by Charles R. Wells, Stratford, CT. In original paint with minor gunning wear and a tight age crack in head. 500-750

841. Connecticut River black duck by an unknown hand. Two piece construction. Body paint may be a second coat. Tight crack in neck with some possible touch up in that area. 300-500



839



841



838F



840



842



845

843
844



846

842. **Hollow Stratford School bluebill drake.** In honest old working paint. Body dishes down from behind the neck to the mid body. 300-500

843. **Exceptional hollow resting black duck by Philip C. Fairbank, Old Saybrook, CT.** In XOC. Made for the 1962 National Decoy competition, class 2, gunning black ducks. Keel has been removed and there is minor paint wear to bottom edge of decoy. This is a great CT decoy. 1200-1600

844. **Exceptional low head black duck decoy by Phil Fairbank, Old Saybrook, CT.** In XOC. Made for the 1962 National Decoy competition, class 2, decorative black ducks. This decoy is mint and a fine addition to any NE collection. 800-1200

845. **Decorative wood duck drake by Richard and Marion Harris, Old Saybrook, CT.** In XOC with nice patina. Felt covered bottom has original paper label "Harris Wild Duck Decoys, Ingham Hill Road, Old Saybrook, Connecticut". Similar decoy pictured on page 163, top left plate in Wildfowler Decoys, by Cowan and LaFountain. 800-1200

846. **Decorative green-winged teal drake by Richard and Marion Harris, Old Saybrook, CT.** In XOC with a light coat of finish feeder. 800-1200

847. **Outstanding red-breasted merganser drake ca. 1940's by Phil Fairbank of Old Saybrook, CT.** In XOC with a few minor imperfections. The late Mr. Fairbank was a consistent ribbon winner back in the early show competitions, competing with his friends and contemporaries Joel Barber, Ted Mulliken, "Shang" Wheeler, Harry Ross, the Harris's, and others of that period. 800-1200

848. **EARLY Wildfowler Factory hollow black duck decoy with inset oval bottom board.** "Old Saybrook" circular brand on the bottom. Original keel, glass eyes. In excellent original paint with a few minor surface imperfections. A little minor paint flakes off the bill. There are a few sap bubbles on the surface of the back. 250-450

848A. **Wildfowler brant decoy with glass eyes, old working paint with some flaking, bill tip chip, neck check, original keel, and a Roman numeral II on the bottom.** 200-300



847



848



848A



849



850



851



851A



851B

849. **High head bluebill drake ca. late 1800's.** An early example of a Connecticut River decoy in century old paint. Body made in two pieces and pegged together. 300-500

850. **Merganser hen by unknown carver, possibly Maine.** Head either made in two pieces that join on a high body shelf. Paint appears original with in use touch up. 400-600

851. **Merganser hen by the Pratt Mfg. Co. or possibly Victor.** Original paint with a few small chips and slivers missing on body. Horse hair crest. 300-500

851A. **Hollow bluebill drake decoy with painted eyes and inlet lead weight attributed Harry V. Shourds (1861-1921).** Black paint on the head breast and tail as well as the white on the lower sides is overpaint. Middle of the back is OP. 400-600

851B. **Bluebill drake by Doug Jester ca. early 1900's.** Original paint is moderately worn from gunning use. Knot visible on right side with a small area worn to wood adjacent. 400-600

852. **Susquehanna flats high head wide bodied oversize canvasback drake ca. 1900.** Very old crazed paint, much of which appears original with some touch up possible especially on head area. Tight check on right side and minor wear to bill tip. Old nail holes apparent on top of head. The high head models were used to help camouflage the sinkboxes and thus relatively few were made. 400-600

853. **Susquehanna flats canvasback drake by Madison Mitchell ca. 1940's in old gunning paint, much of it original.** Finish shows moderate wear. Chip missing from bill tip. Old sliver of wood missing from bottom, tight check in neck. 200-400

854. **Canvasback hen attributed to Jim Currier.** Crazed and worn old paint appears to be largely original. Crack in neck with chips and wear to bill and tail area. Hit by shot. Written on bottom "Featherstone - - (?) - - River, Va.". 300-500

855. **Upper Chesapeake canvasback hen.** Possibly by Mitchell or an early Jobes. OP with flaking. Tight crack in neck. "186H" or "H981" painted on bottom. 200-300



852



853



854



855



856. **Bluebill drake by Bob McGaw.** Good old paint with some original with light to moderate gunning wear. Small crack and checks in back and neck. 200-400

857. **Set of 3 folding canvasback shadows.** Made to open up and form a triangle. In good original paint with in use wear. 100-150

858. **Tern decoy by Bruce Beiber, Cape May, "Firehouse", NJ.** In XOC, branded "B" on underside. Good original paint with some small areas of crazing. 100-150

859. **Sandpiper by Jim Slack on a cedar base.** In excellent original condition. 100-125

860. **Hollow bluebill drake with painted eyes ca. 1900 by Harry M. Shourds in old paint.** 300-500

861. **Lot of two decoys by Doug Jester.** One is a black duck with restored paint, the other a Doug Jester bluebill repainted by Timothy Leary. 300-500

862. **Two, as found, gunning Martha's Vineyard brant ca. 1900.** One in old paint with a two-piece body, the other a solid bodied decoy in old paint without the head and neck. 300-500

863. **Folky bluebill hen from Martha's Vineyard, Mass.** Perhaps by Stanley Murphy's "unknown carver 21". Old overpaint with heavy wear and flaking. 300-500

864. **Cork bodied seagull by unknown maker.** Applied and raised wooded wingtips. Very good original paint and condition. The numbers "80" are on the bottom. 200-400

865. **Fresh water coot with glass eyes from Canada.** Check in the middle of the back. Paint looks original but not very old. 50-75

866. **Black duck decoy by Ken Harris in restored paint.** There are a couple of chips out of the tail. 75-125




CONDITIONS OF SALE - PLEASE READ

DECOYS UNLIMITED, INC. UNDER THE FOLLOWING
TERMS AND CONDITIONS WILL OFFER THE PROPERTY LISTED IN THIS CATALOG.

1. All bids whether by floor, absentee, or phone will have a buyer's premium of 15% added to the auction sale price as part of the total purchase price or 15% for cash or certified check. For payments made using Visa or Mastercard the buyer's premium is 17%.
2. **GUARANTEE** - The Auctioneers have endeavored to correctly describe the property being sold as to attribution, period, and origin. The auctioneers reserve the right to make verbal corrections and provide additional information at the time of sale. We do not guarantee the type of wood or material used in the making of a decoy or carving. Since opinions may differ, as to condition, the auctioneers will be the sole judges in the matter of refunds. All property becomes the responsibility and liability of the buyer at the fall of the hammer. Any lots we might make arrangements for moving or storing are solely at the risk of the buyer and any damage or loss occurring after the fall of the hammer becomes that of the buyer.
3. **DURATION OF LIMITED GUARANTEE** - Request for a refund for items purchased IN PERSON at the gallery must be made before those items leave the auction site. If you are an absentee or phone bidder it is your responsibility to examine the lot immediately upon receipt. On items purchased by absentee bid the guarantee will expire 24 hours from the day of delivery. Therefore all guarantees on items purchased will become null and void 10 calendar days from the date of shipment. **IMPORTANT: IF YOU PAY LATE, YOU MAY NOT BE ELIGIBLE FOR THE GUARANTEE.** Payment must be postmarked no later than 35 days from the date of purchase.
4. Buyers must inspect the merchandise or have it vetted prior to bidding. Any intention of return must be expressed to the Auctioneers within 24 hours of delivery.
5. The Auctioneers reserve the right to reject any opening bid or bid advance not commensurate with the value of the article being offered.
6. The Auctioneers reserve the right to withdraw any lot at any time prior to the commencement of bidding on the lot.
7. Some of the lots are offered subject to a reserve, which is the confidential minimum price below which such lot will not be sold. The Auctioneers may implement reserves by bidding on behalf of the consigner.
8. The highest bidder acknowledged by the Auctioneer shall be the purchaser. In the event of a dispute between bidders, the Auctioneer shall have the sole discretion as to who was the successful bidder or he may re-offer the disputed item at his discretion.
9. Full payment of each purchaser's account must be received on the day of the sale. Payment must be made by cash, certified check, Visa or Mastercard unless other arrangements have been made at least two hours prior to the auction.
10. All bidders will provide their names, residential address and show identification such as a driver's license prior to bidding. Personal checks will be accepted only if the Auctioneers have received a bank authorization guaranteeing funds or other credit references are provided. The Auctioneers reserve the right to hold merchandise purchased by personal check until the check clears the bank, if the Auctioneers regard such action necessary to protect their interests.
11. All shipping and packaging expense shall be borne by the purchaser. If for any reason a purchased lot cannot be delivered in as good condition as at the time of sale or should the lot be lost or stolen prior to delivery, the Auctioneers shall not be liable for any amount in excess of that paid by the purchaser.
12. All purchases are subject to state sales tax unless the purchaser possesses a valid state sales tax exemption certificate and can provide a copy of same for the auctioneer's records. To obtain such a number, contact the state Retail Sales Tax Division.
13. **BIDDING AGENT RESPONSIBILITY** - If you are vetting items for a client or registering for someone or if you execute a bid for someone else under your number, you are responsible for the settlement of that account. The bidding agent(s) are also responsible for examining the decoy(s) for your client regarding the guarantee.
14. **TITLE** - Title passes to the owner at the drop of the auctioneers hammer.
15. **LEGAL DISPUTE** - Any legal disputes arising from the auction shall be settled in the court system of the state of Massachusetts.

I have read and agree to the terms and conditions as stated in the Conditions of Sale. Bidding on any item in this sale indicates acceptance of the above terms.
The office will not be open until two business days after the sale.



limited, Inc. Theodore S.

I wish to place the following bid(s) on items at your auction dated:

ABSENTEE BIDDING

To place an absentee bid fill out the Absentee Bid Form.

Mail to Ted Harmon, P. O. Box 206, West Barnstable, MA 02668-0206. Enclose a check or money order equal to 10% of the total amount of your bids, payable to Decoys Unlimited, Inc. Any monies not applied to your account will be refunded immediately after the sale.

Absentee bids are treated fairly and confidentially. Bids are executed by a member of our staff or the Auctioneer. Bids are placed for you up to the amount which you have specified as your bidding limit. All bidding starts on the auction floor unless two or more absentee bids are received in which case an opening bid could be entered on behalf of the highest absentee bidders limit. We do not open the bidding at your bid limit. We bid against the audience on your behalf within the limits which you have specified. Therefore, it is possible to buy things for considerably less than the bid limit you specify.

If two bids are received for the same amount the earliest bid received will be entered at the next logical bid increment.

A successful absentee bidder will be notified of lots purchased and must remit any balance due before the lots are shipped. Auction bids are payable immediately upon receipt. Shipping is arranged as a courtesy and at the buyers expense. King Shipping is available locally and can be arranged by calling 508-385-5806 or emailing kingshipping@comcast.net.

Absentee bids may be faxed 1-508-375-6367, or sent by email to theodores.harmon@comcast.net, or telephoned to 1-508-362-2766 or cell 508-737-2193. We will be picking up late calls at the sale by cell only.

FAXED ABSENTEE BIDS NEED TO BE RECEIVED BY JULY 28th. We will acknowledge receipt of all faxed bids. Emailed bids will be picked up by the 29th and acknowledged if received successfully. Late emailed bids and bids called in to our cell phone will be entered if possible. PLEASE get your absentee bids in as early as possible so that they can be properly executed. BE SURE THAT YOUR EMAILED OR FAXED BIDS HAVE BEEN ACKNOWLEDGED BY SOMEONE FROM DECOYS UNLIMITED INC.

TELEPHONE BIDS

To bid live by telephone contact us at 1-508-362-2766 at your earliest convenience and indicate the lots that interest you.

A 10% deposit is required unless credit has been established.

The Auctioneers cannot be responsible for communication problems resulting in missed purchases.

INDEX OF MAKERS AND ARTISTS

-A-

Adams, Frank..... 80, 83, 302, 303, 341, 342,
500, 532, 533
Ahearn.....778, 783
Allen.....264
Anderlik.....785
Anger, C.....28, 593
Anger, K.....27, 28, 592, 593
Animal Trap, Co.....122, 122C, 266
Aucoin.....299
Audubon.....299F

-B-

Bacon.....818
Barber.....794
Barkelow.....715
Baumgartner.....695
Beckman.....295O
Beiber.....858
Benson.....164D, 164E, 164F, 164G, 490
Bibber.....225
Birch, Charles.....259, 421B
Birch, Reggie.....519, 523, 647
Bishop.....171
Blackstone.....138E, 219, 220, 221, 222, 223,
224, 323, 324, 325, 327, 328, 329, 330, 331, 563,
565, 767, 768, 769, 770, 771, 772, 773B
Bliss.....75C
Bourg.....295S
Boutin.....268
Bowman.....75J, 260, 295L, 642E, 779E
Boyd, George.....203, 238C, 364, 497, 537,
538, 540, 721, 539, 760, 761, 762, 763, 764, 764A
Boyd, Taylor.....426
Bracher.....33
Brckett.....164
Bruffee, Daniel.....77
Bryanton.....238
Burr.....208, 209, 295K, 408, 409, 409A,
529, 530, 531, 531A, 765C, 775, 821

-C-

Chadwick.....70, 75E, 75F, 78, 79, 349A,
353A, 367B, 457U, 489A, 493, 499, 507, 508
831, 832,
Clark Jr., Gordon.....147, 780
Clark, Roland.....164L
Collins, Martin.....140, 628
Collins, Sam.....198, 199
Conklin, Hurley.....240, 750, 751
Conklin, Roy.....594
Cormadelle.....838A
Courret.....838D
Crandall.....244S, 558, 559, 560, 600, 766
Crawford.....811
Crowell...75D, 75F, 138C, 138F, 138G, 138H, 138J,
164B, 244A, 244B, 244C, 244D, 244E, 244F, 244G,
244H, 244J, 244K, 279, 293, 295E, 299G, 332,
333, 334, 335, 336, 337, 338, 339, 340, 343, 344,
345, 346, 347, 348, 350, 363, 433, 434, 457V, 483,
484, 485, 488, 489, 495, 503, 511, 511A, 511B,
511C, 546, 547, 548, 549, 550, 551A, 551B, 551C,
552, 648, 712, 765, 766A, 779G, 789, 790, 837

Cuffee.....659A
Currier.....854

-D-

Danz Factory.....26
Davis.....787
Davern.....808
Decoys Unlimited.....122B, 277, 278, 280
Dedham.....35, 36
Dilley.....234
Dodge.....89, 118, 267, 273
Downeast Sportcraft.....109, 110
Downs.....657
Dugan.....833
Duplessis.....295Q
Dye.....150

-E-

Eastland.....158A, 187, 188, 189, 190, 191,
195, 196, 197, 198, 199
Eckelberry.....299B
Enticer Decoy.....74
Eustas.....838C

-F-

Fairbank.....367A, 779I, 843, 844, 847
Folger.....235
Freden.....60
Freeman.....238B

-G-

Goodspeed.....361
Gibian.....753, 754, 759, 759A
Glen.....756, 757
Gardner.....516, 720, 752
Gibbs.....210, 211, 212, 213, 214, 215,
216, 217, 218, 244O, 310, 311, 312, 313, 314, 315,
316, 317, 318, 319, 320, 321, 322, 566, 567, 568,
569, 570, 571, 776, 777
Gibson.....644
Gilkes.....57, 71
Gilley.....244T, 164J
Gorseline.....814
Gould.....137, 765, 796, 797, 798
Graham.....642B

-H-

Hagerbaumer.....192
Hall.....728
Hancock.....62, 63, 64
Harris, Ken.....792, 866
Harris, Richard and Marion.....107, 107A, 265,
845, 846
Hart.....354, 355, 574A, 654, 654A
Haynes.....199C
Hays.....7A, 303H, 310, 313, 380, 383, 286
Herter.....81, 96, 97, 120, 158, 244, 285, 690, 804A
Hildreth.....729, 737, 738
Hill.....795
Holly.....150
Holmes.....75H, 231, 829, 510, 522, 651, 723
Hooker.....49, 199B

Hopkins.....127, 779K
Howard.....299A
Howe.....299G
Howes.....166, 167
Hubley.....23
Hunt.....299D

-I-

Icart.....180, 181, 182, 183, 184, 185, 186

-J-

Jansson.....145, 146, 572, 773
Jester.....258, 425, 861
Jobes.....160, 264F, 264H, 264H, 264O, 264P, 758
Joeckel.....75

-K-

Kach.....73, 76
Kellie.....698
Kilburn.....793
King, Joe.....261, 589
King, A. J.....326, 564
Kralic.....641

-L-

Lapham.....140A, 140B, 140C, 140D, 140E,
140F, 140G, 141, 143, 144, 295A, 295B, 295C,
295D, 295E, 295F, 393, 394, 395, 396, 397, 398,
399, 400, 401, 402, 403, 404, 405, 406, 407, 457V,
541, 542, 543, 544, 545, 551, 553, 554, 555, 669,
670, 671, 672, 673, 674, 675, 676
Lawson.....244R
Lebocuf.....642G
Leeds.....711
Levy.....239
Lincoln.....178, 200, 201, 202,
295J, 349, 830, 351, 352, 356, 357, 360, 365, 368,
435, 486, 487, 496, 501, 649A, 650, 652, 713, 830
Linton.....257
Libensberger.....125
Litzenberg.....748
Lutz.....75P, 755

-M-

Maass.....299E
Mason.....1, 2, 3, 4, 5, 6, 7, 8, 9, 10, 11,
31, 43, 44, 50, 51, 54, 80, 83, 87, 88, 111, 112,
113, 114, 115, 116, 173, 272, 275, 276, 282, 283,
284, 290A, 296, 300, 301, 302, 303, 303A, 303B,
303C, 303E, 303F, 303G, 303I, 303J, 303K, 304,
305, 306, 307, 308, 309, 311, 312, 375, 376,
377, 378, 379, 381, 382, 383, 384, 385, 435,
447, 448, 449, 450, 451, 452, 453, 454, 457A,
457B, 457C, 677, 678, 679, 680, 681, 682, 683,
684, 685, 686, 687, 688, 689, 693A, 731, 732,
733, 749, 779I, 828
Martin.....295T
McDonald.....164H
McGaw.....244Q, 856
McKenzie.....139
McNair.....366
Melbye.....345A, 345B

Mitchell Madison.....	264A, 264B, 264D, 264E, 264G, 264H, 264I, 264J, 264K, 264L, 264M, 264N, 264O, 264P, 264Q, 369, 370, 371, 372, 373, 374, 374A, 374B, 645, 648A, 648B, 853	Sorbey 806
Mitchell, Roger.....	199A, 240AN	Sprague 714
Modern Toys	24, 25	Sprong.....164I
Momney.....	703	Squire.....233
Morse.....	204, 205, 206, 207, 244I, 244P	Sperry.....31, 279
Morton.....	232, 296G, 720, 724	Strong 128, 129, 130, 131, 132, 133, 134, 135
Mueller.....	799	Structo 19
		Swatz/Roberts 68

-N-

Nichol	813
Nickerson	362, 494, 508A
Norton	55, 56, 66

-O-

Oakes	353
Ouelette	734, 735

-P-

Paw Paw	288, 292
Peake.....	161
Peltz.....	142, 244L, 244M, 244N, 781, 782, 525, 525A, 525B, 525C
Perdew	387, 389A
Pertuit.....	295U
Peterborough Canoe, Co.....	812
Petruccho	179
Phillips	238A
Plickta	248
Powder Cans	97, 98, 99, 100, 101, 102, 103, 104, 105, 106
Pratt	92, 119, 121, 157, 276, 303I, 408, 457, 692, 851
Primavessi & Sons.....	46

-R-

Reghi.....	704
Reneson	193, 194
Reynolds.....	94, 95
Riley	122D
Ripley.....	163
Robison.....	786
Ross	126
Ross	228
Roussell.....	838D
Ruppel.....	710

-S-

Schmidt, B.....	410, 411, 414, 617, 632, 693, 694, 698A, 699, 700, 701, 702, 705, 706
Schmidt, F.....	252
Schoenheider.....	388, 389
Schultz	159
Scobel.....	838E
Shourds	165J, 422, 582, 583, 584, 642D, 659, 851A, 860
Skeete.....	667
Snipe Whistles.....	237A, 237B, 237C, 237D, 237E, 237F, 237H

-T-

Thomas, J.....	58, 294, 295
Toothacher	227, 228A
Tremblay	153, 819
Trumpington.....	642A
Turner	168
Tyler.....	640

-V-

Van Ryper.....	48
Verity.....	656, 658
Verdin	295V
Victor.....	90, 271, 298, 621
Vinson.....	199E

-W-

Waterfield	255
Ward Brothers	13, 170, 295P, 633, 634, 635, 636, 637, 638, 639
Ward, David	367, 799G, 799H
Ward Torrey	469, 479
Weaver.....	149, 790, 791, 779E, 779F
Weiler.....	75O
Wells.....	839, 840
West	696
Wheeler	779J
White, Bob	666
Whittemore	828
Whittington.....	390
Wildfowler	93, 108, 122A, 126, 154, 269, 270, 281, 286, 287, 314, 315, 455, 456, 610, 707, 708, 709, 826, 848, 848A
Williams.....	138
Wilson.....	75A, 75B, 226, 458, 467A
Winchester.....	164C
Winters.....	765A, 765B
Woodcock.....	809
Wooden Wildlife	61
Woods	810