

Decoys Unlimited, Inc. Theodore S. Harmon

Ted and Judy Harmon

of

DECOYS UNLIMITED, INC.

presents our

Annual Summer Auction

Monday & Tuesday, July 21-July 22, 2008

at the

Cape Codder Resort and Hotel

Hyannis, MA

Telephone: 1-888-297-2200

www.decoysunlimitedinc.net

e-mail: theodores.harmon@comcast.net

SALE: Monday, July 21 • 11 am

Tuesday, July 22 • 11 am

PREVIEW: Sunday, July 20 • 6-9 pm

Monday, July 21 • 9-11 am,

Tuesday, July 22 • 9-11 am

Phone and Absentee Bidding Information

See Directions in Back of Catalog

For absentee or phone bidding please call Ted Harmon – (508) 362-2766

TERMINOLOGY:

XOP - Excellent Original Paint

XOC - Excellent Original Condition

OP - Original Paint

T/U - Touch Up

For more information contact: Ted Harmon, P.O. Box 206, West Barnstable, MA 02668 • (508) 362-2766

See Conditions of Sale – Back of Catalog

**Decoys Unlimited Inc. is proud to announce the sale of the decoy collection of
Howie Waddell and his late wife Jean Waddell Of Manchester, Connecticut**



Howie and Jean Waddell collected decoys, miniature carvings and American folk art for over 40 years.

They traveled throughout the New England States, Maryland, Virginia and parts of New York and the Mid-west in their quest for decoys. They attended auctions, visited antique shops and met with private dealers increasing their collection along the way. Their yearly pilgrimage to the Easton Show in Maryland was always a delight. Aside from collecting, they formed lifelong friendships along the way. Howie had a keen eye and a sharp mind and many collectors called upon him for his knowledge and

expertise. Howie and Jean were especially fond of Cape Cod, Massachusetts where they bought many of their prized birds and had many close collector friends especially Judy and Ted Harmon of West Barnstable, whose friendship spanned for nearly 40 years.

The decoy community lost an avid collector and great friend in Howie and Jean Waddell and they will always be missed and loved. Their family deeply thanks the many close friends that cared and shared so many great stories of Howie and Jean.

Howie was the very first decoy collector we met. He visited with us in Hyannis, Mass, nearly 40 years ago with his then young son Doug. Either he or I had found each other through a small ad in the decoy collector publication "Toller Trader". From the very start his enthusiasm for decoys and the like was infectious. At the time there were only a handful of shows, maybe three or four a year, and we had great fun traveling to all of them. It was not long before Howie and Jean became two of our best friends. They are terribly missed. We are much the better for the friendship we shared.

Ted & Judy Harmon

**Decoys Unlimited is also proud to announce the sale of the decoy collection of
Dr. Leon W. Powell Jr. M.D. and his wife Anne. Leon and Anne were both friends
of the Waddell's and it seems only fitting that their collections will now be shared
with the rest of their friends in the decoy collecting community.**

Leon W. Powell Jr. M.D. was a beloved father, grandfather, and husband, a hard-working pathologist, a dedicated naturalist and a passionately obsessed collector.

Leon collected in several areas of antiques, from decoys to rare books to Sandwich glass, but it was the knowledge behind the objects that held the highest fascination for him. He didn't simply acquire the items; he studied the information about how they came to be. By researching and reading, he surrounded himself with history. For Leon, the magic was in the learning.

A complex person of many contrasts, some of his happiest moments were spent bird and nature watching in the North Carolina forests of his boyhood. This is where his vast knowledge of songbirds, ducks and shorebirds began. Throughout his life, he read prolifically, always surrounded by half a dozen books which he browsed concurrently, like a juggler keeping numerous balls in the air. His personality was serious and scientific, yet for all of his impressive life accomplishments, his dry, witty and unexpected sense of humor was often self-deprecating.

Leon and his wife, Anne, were married for 57 years.

Collecting was one of their greatest pleasures, an activity they pursued together throughout most of their adult lives. They are survived by their four children and eleven grandchildren. Many of their offspring are true antique aficionados and have developed their own individual areas of collecting.

Thanks to Leon and Anne, an appreciation for the past continues to the next generation.



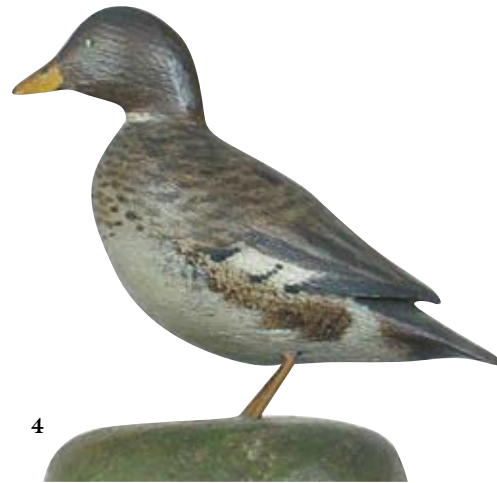
It's odd how you can tell when you first meet a person that they have the same passion for the things they collect and love as you do. From the very beginning it was clear that Leon loved decoys and their connection to the live birds he loved and studied. Our connection to Leon and Anne began in the mid 1980's. We had started the auction business and they were enthusiastic supporters. We are grateful and will miss that enthusiasm.

Ted & Judy Harmon

DAY ONE

JULY 21, 2008

We are pleased to be able to offer over 50 earliest period Crowell miniature birds and two life size songbirds from the Fritz Talbot collection. These important carvings are without doubt one of the most important groups of miniature Crowells that have surfaced in decades. Almost all have just the name of the specie printed on the bottom which is common to Crowell pieces carved during the pre-stamp or pre-brand era. Two smaller life size orioles are also part of this collection and both have the early "High Class Decoys Of Every Description" ink stamp on the bottom.



1. Exceptionally rare early whistling swan miniature by A. E. Crowell, East Harwich, MA in XOC. Plump body with a pulled back head and neck seen in the earliest miniature carvings by Crowell. "W. Swan" in pencil on the bottom of the carved wooden "stone" base. This is the only miniature swan by Crowell we have seen. 3500-6500
Provenance: Talbot collection.

2. Exceptionally rare early Canada goose miniature by A. E. Crowell, East Harwich, MA in XOC. Plump body with a pulled back head and neck seen in only the earliest miniature carvings by Crowell. "CA GOOSE" in pencil on the bottom of the carved wooden "stone" base. This is one of only two or three miniature Canada geese by Crowell in this early style we have seen. See "The Songless Aviary" by Cullity for reference to the pattern for this miniature. 3500-6500
Provenance: Talbot collection.

3. Exceptionally rare early preening goldeneye drake miniature by A. E. Crowell, East Harwich, MA in XOC. Plump body with a turned stretched neck and head seen in only a few early miniature carvings by Crowell. "GOLDENEYE" in pencil on the bottom of the carved wooden "stone" base. This is one of only a handful of preening miniatures by Crowell in this style we have seen. 3500-6500
Provenance: Talbot collection.

4. Exquisite plump miniature goldeneye hen by A. E. Crowell, East Harwich, MA on a carved wooden "stone" base. Mate to the previous lot. In XOC with a drip of sealer on the back done in the making. "F. Goldeneye" in pencil on the bottom of the base. 3000-4000
Provenance: Talbot collection.



5. Miniature split-tail walking Canada goose by A. E. Crowell in XOC on an unusually large carved two-tiered wooden "stone" base. The rectangular brand on the bottom of the base. The feet are shaped with putty or gesso instead of simply painted on the mount which is the norm. 2500-3500
Provenance: Talbot collection.

5A. Rare early miniature reaching black duck in XOC by A. E. Crowell, East Harwich, MA on a carved wooden "stone" base. "BLACK DUCK" in pencil on the bottom of the base. Minor ding on the wing edge and tips and a rub on the end of the tail. 2500-3500
Provenance: Talbot collection.

6. Rare and early miniature tit mouse on a circular carved on base. "Tit Mouse" written in ink on the bottom of the base. XOC. 1800-2200
Provenance: Talbot collection.

7. Rare and early miniature Crowell shrike on a circular carved wooden base in XOC. Split tail "Shrike" written in ink on the bottom of the base. 1800-2200
Provenance: Talbot collection.

8. Very rare early miniature fresh water coot by A. E. Crowell, East Harwich, MA in XOC. "Coot" is written in pencil on the bottom of the base. This is the only example of this specie we have ever seen by Crowell in miniature. Original sealer pooled on belly. 2000-3000
Provenance: Talbot collection.

9. Earliest period Crowell miniature split-tailed golden plover on a circular carved wooden base. In XOC. Painted red eyes. "Golden Plover" written in pencil on the bottom of the base. 2500-3500
Provenance: Talbot collection.

10. Rare and early Crowell miniature killdeer on a circular carved wooden base. In XOC. "Killdeer Plover" written in pencil on the bottom of the base. 2500-3500
Provenance: Talbot collection.

11. Rare and early miniature turned-ahead split tailed black-bellied plover by Crowell on a circular carved wooden base. In XOC. Painted red eyes. "Beetle Head" written in pencil on the bottom of the base. 2500-3500
Provenance: Talbot collection.

12-13-14



15-16-17



18-19-20



12. Rare and early miniature black and white warbler by Crowell on a circular carved wooden base. "Black-White Wab" written in ink on the bottom of the base. In XOC. Ding on the tip of the bill. 1800 -2400
Provenance: Talbot collection.

13. Rare and early miniature oven bird on a circular carved wooden base. "Oven Bird" written in ink on the bottom of the base. In XOC. 1800-2200
Provenance: Talbot collection.

14. Rare and early miniature towhee on a circular carved wooden base. In XOC. "Towhee" written in ink on the bottom of the base. Ding at the tip of the bill. 1800-2200
Provenance: Talbot collection.

15. Miniature blue-winged drake by A. E. Crowell (1862-1952), East Harwich, MA in XOC. Rectangular impressed brand on the bottom of the base with "Donald B. Howes Antiques" collection ink stamp. 2000-2800

16. Canvasback drake mini by James Lapham. Head turned slightly to the left with split, raised wings and carved tail detail. In excellent original condition. Signed on bottom "Canvasback - J. Lapham - Dennisport - Mass." X Donald Howes collection with his ink stamp. 400-700

17. Miniature mallard hen by James Lapham, Dennisport, MA on driftwood. Written on bottom. "James Lapham, Dennisport, Mass" and "Mallard Hen" XOC. 400-500

18. Miniature shoveler hen by James Lapham, Dennisport, MA in XOC. "Shoveler Hen" and James Lapham, Dennisport, Mass" in ink on the bottom of the base. 400-500

19. Miniature preening wood duck drake by James Lapham in XOC. "Wood Duck" and James Lapham, Dennisport, Mass" on the bottom of the base. 400-600

20. Miniature reaching dowitcher by James Lapham in XOC. "Dowitcher, Fall" and James Lapham, Dennisport, Mass" on the bottom of the base. 400-600



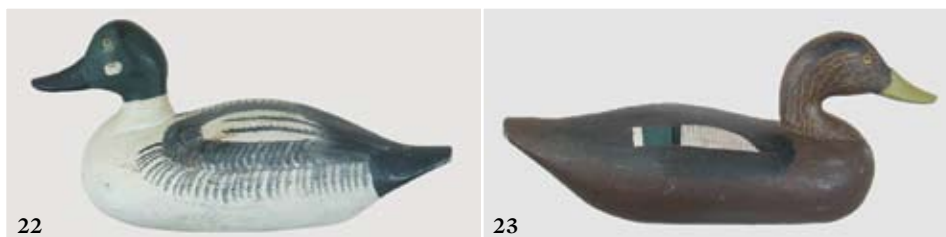
21(PR)



21(PR)

21. **Extremely rare and desirable pair of matched hunting rig mallards ca late 1800's by John English (1852-1915) of Florence, New Jersey.** Both are in fine original condition in all respects with minimal gunning wear. One tiny chip out of a single tail feather tip on the drake. A tiny nail was used to re-attach a small tail feather chip on the hen. Probably done by the hunter user, possibly John English himself. Outstanding feather paint on the hen in the same manner as the pintail hen pictured in the middle of page 61 from "Floating Sculpture" by Huster and Knight. The tail curl on the drake is carved from wood not shaped from metal. Each lead balance band has been painted on the edges with a rig identification band in bright yellow. The surface has been professionally cleaned by Ken Delong and a little yellow paint that was splashed alongside the weights has been removed from the bottom. Huster and Knight speculate on page 59 in their book, "Floating Sculpture", that this John English made only 800

to 1000 decoys in his lifetime. It appears that so few were his mallard decoys that the authors of "Floating Sculpture" could find only one mallard drake in repaint by Dawson on page 121 for inclusion in their book. They go on to explain on page 59 that many of the sculptured masterpieces by John Dawson were in reality repainted John English decoys. They write: "John English, one of the reigning but, until now, unsung giants of the Delaware River school, was the father of Dan and Jack English." They go on to explain why he was an unsung giant with the following statement. "One reason was that many of his outstanding birds were picked up and repainted by John Dawson, so for years, everyone who ever saw that classic Delaware River style credited Dawson with the decoys." See pages 59 to 63 for in depth information regarding this outstanding Delaware River artist. 80,000-120,000 *Literature: Floating Sculpture by Huster & Knight.*



22. **Goldeneye drake by Paul Gibson.** Minor rubs to original paint. Never rigged. Signed on bottom "Paul Gibson – Havre de Grace Md. – Maker and painter 1977". 200-400

23. **Widgeon hen by Paul Gibson.** All original condition and paint with minor rubs. Never rigged. "Paul Gibson" on bottom. 200-400

24. **Redhead hen and drake by Madison Mitchell.** Very good, all original condition. Signed on bottom in electric pencil. 400-600

25. **Weathered canvasback drake ca late 1800's in very old paint with crazing from Maryland.** Deep lead or iron keel shaped weight attached to the bottom. Neck check. Painted eyes. 200-400
Provenance: Fairbank collection.

26. **Canvasback drake attributed to August Heinfeld.** Original paint with wear and some rubs to primer. Check in neck. 150-250

27. **Pair of early whistlers by Madison Mitchell of Havre de Grace, MD.** Both are in "out of rig" condition. Drake has two tight cracks in neck with light to moderate gunning wear to original paint. Hen has been lightly struck by shot and there are small chips of wood missing from top of head and right side of bill. Light even wear to original paint. 300-500

28. **Mallard hen attributed to Capt. Harry Jobes.** Head turned slightly to the left. Thick, rich, Harry Jobes paint which is in overall excellent shape except for three or four miniscule scuffs. Old tight crack in neck. 100-200

29. **Blue-winged teal hen by Madison Mitchell or possibly Paul Gibson.** Original paint which is showing uniform moderate crazing and cracking. Old tight check runs through tail and the remnants of what was probably a rigging staple are visible under the tail. 200-400

30. **Early widgeon hen by Madison Mitchell.** "K" brand is impressed into the bottom. Original paint with a couple of small imperfections on the left side. 200-400



31



32

31. **RARE AND IMPORTANT** Mason factory Premier grade widgeon drake with a more detailed paint swirling and coloration around the wings and speculum. Head seam may have some glue to keep the head from moving. Minute separation visible along the body seam. Slight mark on left bottom of bill may be from an old shot hit. All original paint except for a small blemish (approx 3/8") on the left wing. Outstanding swirl paint. Some small areas on bottom front of breast show wear to wood or primer and the edge of tail shows very light wear. A darkened ring in the paint is visible just below the body seam. 20,000-30,000
Provenance: Howard Waddell Collection.

32. **Classic** Mason factory glass eye yellowlegs with the original metal bill. A few imperfections but it is obviously had little usage. Knot on the right wing shoulder. Some tiny rubs. Outstanding original paint and detail with deep swirling on the back and tail. Outstanding decoy. 5500-7500
Provenance: Howard Waddell Collection, X Bud Ward Collection.



33. **Mason factory glass eye black-bellied plover in spring plumage ca 1905.** This is the exact bird pictured on page 118 in the definitive Goldberger and Haid reference. So called "beetle" head which was a special order from Mason. Metal bill is near mint original. Baptized by several shot on the left side with just a few strikes on the side pictured. Classic, thick, bold, original paint. Considered by many to be Mason's most desirable shorebird decoy. 12,000-16,000
Provenance: Howard Waddell Collection.

34. **CHOICE Mason factory glass eye black-bellied plover in fall or winter plumage ca 1905.** This is the exact bird pictured on page 118 in the definitive Goldberger and Haid reference. So called "beetle" head which was a special order from Mason. Original metal bill near mint. One small (less than 1/4") rub to wood on the right wing tip. In superb condition with rich original paint. The decoy appears to have been used little, if at all. 14,000-18,000
Provenance: Howard Waddell Collection.



35

35. **Mason tack eye willet in spring plumage ca 1910.** This is the exact bird pictured on page 105 in the authoritative Goldberger and Haid reference. Outstanding original condition with a few small imperfections on the surface and two tiny shot marks on the left shoulder and neck. Strong, all original paint still retains brush marks. There is practically no wear to the paint and it is doubtful if the decoy saw any use. 5500-6500

Provenance: Howard Waddell Collection.

36. **Mason tack eye golden plover in fall plumage with metal bill.** This is the exact bird pictured on page 101 in the authoritative Goldberger and Haid reference. Wonderful original paint with very light wear and rubs. A few very tiny dents in back and one small shot scar to left rear of head. Minor corrosion to tack eyes and bill. Acquired by Mr. Waddell in 1978. 6500-8500

Provenance: Howard Waddell Collection, X Bud Ward collection



36

37. **Extremely rare Mason standard grade glass eye oldsquaw drake is one of only 2 known examples.** Neck filler missing and a sliver (about 1 1/2" X 1/4") of wood missing from left top of head. A thin crack exist under the tail and the bill tip is slightly blunted. Original swirling paint in the wing base/shoulder area. Moderate overall gunning wear. There are areas of wear to both sides. Lightly hit by shot on right side. 10,000-12,000

Provenance: Howard Waddell Collection.



37



38(PR)



39



40



41

38. **Pair of Mason factory glass eye blue-winged teal in XOC.** Hen has original neck filler and 2 very thin tight checks on right side and a tiny check on the bottom of the breast. Thick swirled paint with a few very small dings to primer or wood. One glass eye cracked. Two inch inlet weight on bottom. Drake retains about 2/3's of original neck filler. One small raised grain area on right wing dates to factory. No cracks or checks. Fine original paint shows overall light wear with two spots on head and bill and a few small areas on tail rubbed to wood. Two inch inlet weight and a partial hot brand may be OA. Acquired by Mr. Waddell in 1976.

Provenance: Howard Waddell Collection. 2500-4500

39. **Mason Detroit grade painted eye bluebill hen.** Neck filler missing, head has been glued in place to prevent movement and bird has been very lightly hit by shot. Good original paint with moderate overall wear. Most of left side of head shows wear to wood and there are rubs to wood on sides of bill. Acquired by Mr. Waddell in 1975.

Provenance: Howard Waddell Collection. 350-450

40. **Very rare Mason standard grade painted eye whistler hen ca 1910.** This is the exact bird pictured towards the bottom of page 67 in the definitive Goldberger and Haid reference. Neck filler missing. Large check in left side. Small checks and roughage to right front of breast and rear of neck. Strong original paint with some small rubs to wood on right side. Two small areas of roughage on right side of head and neck appear to be shot hits. Acquired by Mr. Waddell in 1970.

350-450

Provenance: Howard Waddell Collection.

41. **Mason standard grade painted eye black duck.** Original neck filler with minor chipping. Two tight checks on left back and left breast. Some paint loss on a 5/8" knot on left bottom edge and to a less extent on two other smaller knots on bottom edge. A 3/8" hole in bottom. Strong original paint with some rubs to wood along grain lines on back. Acquired by Mr. Waddell in 1972.

500-700

Provenance: Howard Waddell Collection.



42. **Detroit grade painted eye redhead drake by the Mason factory.** Neck filler missing. Excellent structural condition with strong original paint which shows light wear and rubs. A very small drip of white paint on bill tip can be easily removed. Overall a very nice decoy. Acquired by Mr. Waddell in 1976. 400-700
Provenance: Howard Waddell Collection.

43. **Standard grade tack eye bluebill hen by the Mason factory.** This is the exact hen pictured in the pair at the top of page 19 in the definitive Goldberger and Haid reference. Partial original neck filler. Small partial check in back and a tiny sliver of wood missing from left bill. Very good swirled original paint with some discoloration to the white areas. Possible touch up around eyes and a small drip of a clear sealer type substance on rear of head. Inlet weight. 300-450
Provenance: Howard Waddell Collection.

44. **Early Wildfowler balsa preening black duck.** Structurally fine except for a slight thinning or blunting at the tip of tail. Original paint has developed a nice patina and shows light average overall gunning wear with one small rub to top of bill. Retains original keel and "Old Saybrook" stamp.
Provenance: Howard Waddell Collection. 400-600

45. **Pair of Wildfowler balsa coastal canvasbacks.** Both are structurally fine and both are in original paint which shows overall light gunning wear. A few rubs on head of hen with similar rubs, one to wood, on drake. Two or three small, shallow dents to left side of drake. Both retain original keels, weights and "Old Saybrook" stamps. 600-800
Provenance: Howard Waddell Collection.

46. **Green-winged teal hen with head turned slightly to the left.** Elaborately carved and raised wings in the style of Wildfowler. Chips to edges and tip of tail. Good original paint with light shelf wear. Signed on bottom "A LaMontague - BI" 300-400
Provenance: Howard Waddell Collection.

47. **Wildfowler factory balsa Canada Goose.** Nicely carved bill and head position. Excellent structural condition. Fine original paint with a few small nicks to left tail edge. Rigged for hunting but probably used little. Original keel, no factory stamp. 300-400
Provenance: Howard Waddell Collection.



48. **Excellent example of a Wildfowler balsa brant.** Nicely carved bill with head in a swimming position. Tiny hairline crack across the front base of neck seat and left eye cracked. Fine original paint with practically no wear to body and a few light rubs to head and neck. Original keel branded "RBK". Retains original Old Saybrook stamp (double struck). 400-600
Provenance: Howard Waddell Collection.

49. **Very rare early pair of salesman's sample Wildfowler mallards.** Hollow carved pine or cedar. Lower body seam is just becoming visible on hen and a faint crack in both left eyes otherwise structurally fine. There is a faint, clear stain on the lower left edge of the hen. All original paint shows light wear and rubs and has darkened from repeated handling.
Provenance: Howard Waddell Collection.

50. **Wildfowler, balsa, high head black duck.** Inlet head with partial crack in right rear of head. Exceptionally strong and vivid original paint with a few small rubs to surface. A few tiny pin holes on lower left side. Original keel but no factory stamp. 200-400
Provenance: Howard Waddell Collection.

51. **Wildfowler, balsa, low head black duck.** Inlet head with thin crack in neck. Exceptionally strong and vivid original paint with a few small scuffs to wood. Retains original keel but no factory stamp. 200-400
Provenance: Howard Waddell Collection.

52. **Wonderful bluebill drake by Paul Lipke.** Hollow carved in excellent structural condition except for a tiny tight crack in the right base of the neck. Weight and rigging removed. Outstanding original paint with minor rubs.
Provenance: Howard Waddell Collection.



53. **Widgeon drake by Gene Konapasek** In excellent original paint and condition with very light wear. Signed on bottom with additional illegible notes. 300-500
Provenance: Joe French collection



54



54A

54. **INCREDIBLE** Plump split-tail black-bellied plover decoy by A. E. Crowell (1862-1962), East Harwich, MA. In virtually mint condition. Vibrant dry brushed paint and large tack eyes. Probably from the pristine rig that were wrapped in newspaper and found in a draw in the Maritimes back in the 70's. Probably never exposed to light until found.

Provenance: Powell collection

15,000-25,000

54A. Wonderful split tail running ruddy turnstone decoy by A. E. Crowell 1862-1962) East Harwich, MA with glass eyes and upturned bill. Appears to be unused. Small sliver of wood missing from under the stick hole is filled with putty in the making of the bird. Outstanding original paint.

15,000-25,000



55



56

55. Black-bellied plover decoy in transitional plumage pattern by George Boyd (1873-1941) Seabrook, NH in XOC. Dry mellow paint with great feather detail and a bold “bull” head. Minor rubs to the paint on the edges of the bill. See Levinson and Headley p. 52-53 for biography and photo.

10,000-15,000

Provenance: Powell collection

56. Large solid-bodied Hudsonian curlew By John McAnney (1866-1949), New Gretna, NJ in XOC. From the rig of 6 mint examples found years ago. Great textured breast feather painting with painted eyes and tiny feathers painted on the back. Ca 1900. See Levinson and Headley p. 85 for biography and photo.

8,000-12,000

Provenance: Powell collection



57



58

57. Greater yellowlegs decoy by Harry V. Shourds (1861-1920) in excellent near mint condition. A few tiny rubs on the edge of the tail and a tiny chip on the right side of the bill where it meets the head. See Levinson and Headley p. 81-83 for info.

6000-9000

Provenance: Powell collection

58. Exceptional Long-billed curlew by Joe King, Manahawkin, N.J. ca 1889. All original paint with moderate gunning wear. Retains its original bill which is very rare for birds of this vintage.

10,000-14,000



59



60



61



61A

59. **Thick flat sided yellowlegs.** Carved from a 1" plank. Original paint shows moderate overall wear with a number of small rubs, stains and dings from use. Right side hit by shot. Hole through tail for stringing. Wooden bill appears to be the original. Very thin check in top of head. Possibly from Virginia and by the Hudson family. 500-1000
Provenance: Powell collection

60. **Yellowlegs by John Fulcher of Corolla, North Carolina, ca 1900.** Nicely sculptured tail area and overall clean lines. Excellent structural condition with strong, original paint. Wear with a fine patina almost to wood on breast. Nail bill appears original. For rig mates in comparable condition, see page 112 in Levinson and Headley. 2500-4500
Provenance: Powell collection

61. **Curlew decoy.** Old chip carved body with some worn and crazed original paint. Knot hole repair on left side. Head appears to be a latter replacement. 300-500

61A. **Crow by Charles Perdew.** Glass eyes and head turned nicely to the right. Head and body carved as two pieces. Original metal legs. All original paint with overall light wear. Small rubs to wood on bill tip and tail edges. One tiny paint chip on the right side of head behind eye and a little separation along neck seam. *Provenance:* Powell collection 800-1200



62. **Herters, “Model Perfect” - “True to Life” crow.** Made by Chicago Novelty Co. (see page 202 in Trayer). Deeply incised, detailed, feather and wing carving. Original paint which shows moderate overall wear with some high points worn to wood. Excellent structural condition with no checks or cracks. 300-500

Provenance: Powell collection



63. **Mason factory crow** decoy in OP with wear on the high spots of the bill and tail and light wear on the body. Glass eyes. “103” on a collectors tag on the bottom near the stick hole. 900-1200

Provenance: Powell collection



64. **Rare blackbird decoy.** Paint appears to be old and original. About 1/3 of the right tail edge has been repaired. Attributed to Lancaster County, Pa.. “Pennsylvania – Dutch” style, folk art carving. Collector information indicates it was acquired from Dick McIntyre. 1200-1600

Provenance: Powell collection

65. **Flattie curlew.** Old crusty original paint with very light wear. Split tail and carved eyes. Miniscule chip in tail. Bill appears to be the original. 300-500

Provenance: Powell collection



66. **Chesapeake flicker decoy.** Tack eyes, open bill and sharpened metal point for mounting on a pole. Fine original paint and condition. 600-900

Provenance: Powell collection

67. **Sanderling decoy by Hurley Conklin, N.J.** XOC in all respects. 200-400

Provenance: Powell collection





68. **Pair of flattie shorebird decoys.** Plywood construction in original paint which shows light wear on one and moderate to heavy wear on the other. Both retain original metal wire stakes. Bird with wear has a few shot holes on one side. Probably made towards the end of the shorebird hunting period.

500-750

Provenance: Powell collection

69. **Full-bodied red-breasted knot decoy ca early 1900's from NJ.** Old paint some of which is original. Sides are flat.

Provenance: French Collection.

600-900

70. **Thick flat-sided dowitcher.** Old collector tag indicates that the bird was made ca. 1900 in New Jersey. Strong original paint with light wear except for some light chipping and crazing on the upper right side of head and body. Two or three small shot hits on left side and knot visible on right side.

200-400

71. **Primitive shorebird decoy, probably mid-Atlantic origin.** Some original paint with numerous areas worn to wood or primer. Heavily hit by shot on right side. Metal nail bill is probably an old replacement. A weathered old veteran.

200-400

72. **Canada goose field stickup of Canadian maritime origin.** In a graceful reaching pose. A few small checks and knots visible on the hand chopped body and neck. Typical three iron spike "legs". Old nails visible at base of neck where there is a small joint which is original to the decoy. White appears to be an in use touchup. Spoke shave marks visible on the root or branch head which is turned slightly to the left. Very appealing form. Old collector tag from 1981 indicates that the bird may have come from the rig of a George Skerry or have been carved by him.

500-750

Provenance: Powell collection

73. **Canada goose field stickup of Canadian maritime origin.** In a sentry pose. A few checks and knots visible on the hand chopped body and neck. Typical three iron spike "legs". Old nails visible at base of neck where there is a small joint which is original to the decoy. Large chip on left underside of bill appears to be original to the carving of the decoy. Some fairly large shot hits to the neck. White appears to be an in use touchup. Old collector tag from 1981 indicates that the bird may have come from the rig of a George Skerry or have been carved by him.

500-750

Provenance: Powell collection



74. **Canada goose field stickup of Canadian maritime origin.** In a reaching pose. A few small checks and knots visible on the hand chopped body and neck. Typical three iron spike “legs”. Old nails visible at base of neck where there is a fairly large joint which is original to the decoy. White appears to be an in use touchup.

Provenance: Powell collection

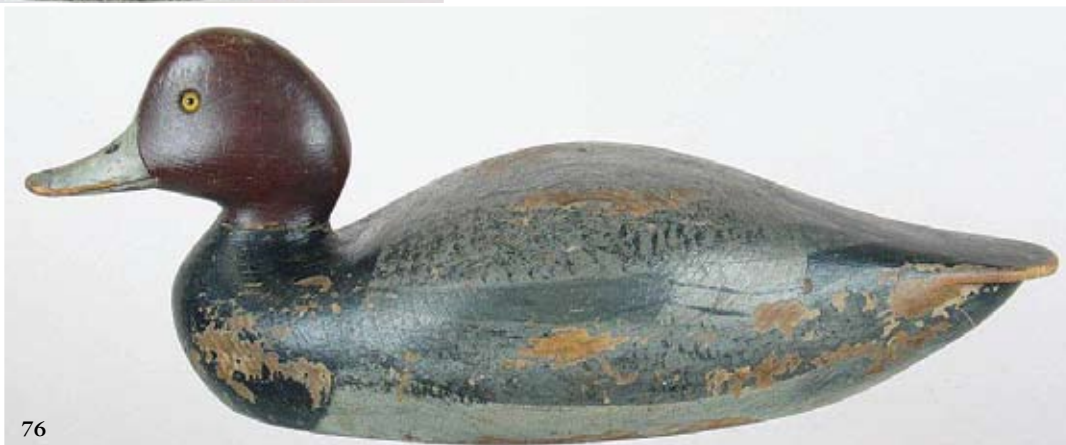
500-750



75. **Canada goose of North Carolina origin.** Canvas over wood and wire frame. One old tear on top of back about 1” long and a few tiny spots where the underlying frame has worn through the canvas. Overall good structural condition. Largely original paint with some gunning touchup, especially to the white.

Provenance: Powell collection

500-750



76



77



78

The following seventeen lots are from the hunting rig of John G. MacKenty and Richard L. Colter of Edgartown, Martha's Vineyard, Massachusetts. Mr. MacKenty authored the book "Duck Hunting" which was published in 1953 and focused on the hunting practices in common usage on Martha's Vineyard at that time. Many of the birds are pictured in use in the book. All the decoys are in original "out – of – rig" condition with obvious gunning wear and darkening to the finish. Most have the silver painted "C" on the bottom for Mr. Colter as well as the hot brand "JGM" for Mr. MacKenty. The decoys represent a time capsule of a typical mixed Martha's Vineyard rig of classic Edgartown carvers.

76. **Outstanding redhead drake by Henry "Keyes" Chadwick (1865-1958) of Oak Bluffs.** See pages 26 to 57 in Martha's Vineyard Decoys by Stanley Murphy. An early example of a drake in old overpaint can be found on pages 29 and 46. This early model pre-dates the well known early "Taunton River Rig" decoys found in the early 70's. Features the early "shelf" tail design. All original untouched early paint in one of his earliest paint patterns with wear on breast, sides, and tail edge.

4500-7500

77. **Redhead drake by Keyes Chadwick.** Early shelf tail in well weathered condition with vestiges of original paint. Check in back and sides. Both glass eyes missing and small knot visible on back. Painted "C" and "JGM" hot brands.

500-750

78. **Classic early period lowhead redhead hen by Keyes Chadwick.** A number of narrow checks in body. Very worn original paint which has darkened with age. Glass eyes missing. Painted "C" on bottom and "JGM" brands on top and bottom.

500-750



79. **Early period bluebill drake by Keyes Chadwick.** Head turned to right with early shelf tail. Note the early paint pattern is of the same style as used on the redhead, lot 76. All original with some wear. Check runs entire length of bottom. Lightly hit by shot and one glass eye missing. Bears painted "C" and "JGM" hot brands. 1500-2500



80. **Outstanding bluebill drake in XOC by Henry Keyes Chadwick.** (Keyes rhymes with skies). There are a few minor surface rubs and a very narrow bottom check which extends under the tail and into the lower breast. This is part of a wonderful rig we found in the late 60's that never went overboard. Glass eyes, typical circular bottom weight poured into the bottom. Head turned to the right. 2500-3500



80A. **Exceptional Keyes Chadwick bluebill hen from the same rig as the above decoy.** Virtually mint paint with minor imperfections. Head turned slightly right. Glass eyes. Narrow bottom check. Typical circular balance weight poured flush to the bottom. Staple for line attached to the front but this is from the same rig as above decoy. Brought to Cape Cod packed in fish barrels from Martha's Vineyard in the late 60's which we purchased over a three year period. We still have photos of the rig that we can make available to the purchaser of either decoy. 1500-2500



81. **Very early whistler by Keyes Chadwick. PERHAPS AN IMMATURE DRAKE.** Original paint with a fair amount of wear. Check runs entire length of bottom. Hit by shot with raking scars on tail. Painted "C" on bottom with "JGM" brand on top and bottom. A rig mate to the goldeneye pictured on page 54 in Martha's Vineyard Decoys. 500-1000



82. **Fine early bluebill drake by Keyes Chadwick.** Head turned slightly to the left. Worn original paint and it has a open check on the top of the body. Painted "C" on bottom for Colter and bears the "JGM" hot brands. Great form and early paint pattern. 500-1000



83. **Early Chadwick bluebill from the Colter/MacKenty rig.** In old weathered paint showing heavy usage. A nice early Vineyard relic. 300-500

84. **Bluebill drake circa early 1900's by Winthrop B. Norton, Edgartown, Martha's Vineyard, Massachusetts.** Appears to be all original paint with light to moderate gunning wear. Painted eyes. Peg visible on top of head and a small chip in top of bill as well as a check in bottom. See page 86 through 89 in Martha's Vineyard Decoys for information on the Norton family. A very similar bluebill decoy is pictured in plate 64 on page 88. 400-600

85. **Red-breasted merganser by Frank Richardson.** Hollow with a thick bottom board. Very worn original paint and loose head. Interesting saw cut to rear of head to represent a crest. See pages 94 to 102 in Martha's Vineyard Decoys by Murphy for information regarding this maker. A somewhat similar merganser hen can be seen in plate 78 on page 101. 500-1000

86. **Black duck by Frank Richardson.** Semi-swimming posture. Hollow from below with inlet bottom board. Mostly original paint with wear has darkened from age. Possible touch-up on head. Stain on back and small chip in tail. 500-1000

87. **Rare whistler drake by Robert L. Jackson of Edgartown, Martha's Vineyard, Massachusetts.** This is the exact bird pictured on page 77 of Stanley Murphy's Martha's Vineyard reference. Large chip missing from bottom of bill. Two small cracks in bottom. All original paint with moderate gunning wear. Old collector tag on bottom. 500-1000

88. **Very rare bluebill drake by Frank Richardson.** Mostly original paint with some gunning touch-up and wear. Small chip on top of tail. Hollow with a bottom board. Collector tag on bottom reads "F Richardson bluebill M". 500-1000

89. **Whistler by K. Chadwick.** Head has been reset and a chip missing from the neck seam has been replaced. Paint is worn to wood over much of decoy with some over paint on the head. Both eyes missing and a small check in bottom. Painted "C" and "JGM" hot brands. A worn old veteran. 400-600

90. **Redhead drake by Stanley Murphy's "The Long Tail Carver".** Head is an in-use replacement, probably from a Norton family bird. Bill crack repaired with tape. Gunning repaint. Old, somewhat illegible collector tag on bottom. 100-200

91. **Peterson factory bluebill drake from the same Vineyard rig.** Neck filler missing as well as a small chip in base of neck. In a combination of original and gunning repaint with wear. 300-600



92



93



93A



94



95



96

92. **Immature goldeneye drake found in the Whiting barn on Martha's Vineyard.** Doc Starr was able to visit the Whitings years ago and had collected several decoys from the family. This decoy gifted to the consigner by the Whiting family. Head reset on body. The body form is in a known Lothrop Holme's style and this may be a variation of whistler in another pattern by Holmes. "The Whiting and Mayhew family of Tisbury gunned Black Point Pond almost since anyone owned anything on Martha's Vineyard." This quote from Doc Starr's book, "Decoys of the Atlantic Flyway" on page 162. 400-600

93. **Bluebill hen by an unknown but fairly prolific Vineyard carver.** This carver is known to have made mostly bluebills. Old original paint with moderate gunning wear. Overall very good original condition. Hot "JGM" brand. 300-500

93A. **Black duck by Frank Richardson.** Never painted and never rigged with a few, very minor imperfections. 400-600

94. **Merganser drake by Cooper Gilkes of Oak Bluffs.** All original paint. Break in bill. Check in head. 300-500

95. **Outstanding example of a red-breasted merganser hen by William H. "Will" Smith (1869-1938) from Stony brook, Long Island.** See plate 93 on page 76 in "Gunners Paradise" by Townsend published by the Museums at Stony Brook for information about this early decoy maker. Finely carved crest and tail with a sharp yet delicate ridge on the back. Crisp paint appears all original under a thin protective coat of finish feeder. A few small areas of wear and rubs to the paint, mostly on the upper back. One very inconsequential 1/2" (approx) thin slit on the right center of the back and an ancient, tiny chip, to the very tip of the tail. Old "X" scratched into the bottom. 14,000-18,000

96. **Very attractive early red-breasted merganser drake ca late 1890-1910 from LI with red glass eyes and an inset notch carved crest.** Wonderful mellow old paint with even gunning wear may be all original. Possible t/u to some of the black. Two narrow age checks in the body. Struck by a few shot. 4500-6500



97

97. Singularly spectacular confidence gull decoy ca 1900 by an unknown master folk artist. A classic LI gull decoy. Deeply cut, raised, and separated wings arch out and over a finely shaped tail. Head and neck carved in two pieces. Fine, original paint with some light gunning wear to primer in spots. A gull decoy by the same carver is pictured on the cover and in color plate 31 in Starr.

5500-8500

Provenance: X collection of Harold Corbin, Howard Waddell.



97A

97A. Thick, flat-sided, black-capped tern decoy from Long Island circa 1900. Very old paint appears to be original over an old white base coat. Light overall crazing with a small, shallow 1" X ¼" chip on left shoulder. A few light rubs.

7500-9500



98

98. Redhead by William Bowman, Long Island, N.Y and Bangor, Maine. A fine and accurately restored classic decoy by one of America's finest decoy makers. There is a very slight separation and small scratch apparent on right side.

400-600



99(PR)

99. Pair of bluebills by Lemuel Ackerly of Patchogue, Long Island, N.Y. ca 1900. (Info on collectors tag). Original paint which exhibits moderate overall gunning wear. Two or three chips to wood on back of drake (avg. 1"). Old sliver of wood missing from lower left bill and cheek of drake which appears to date to time of carving. Old nail fasteners visible at base of neck on both. Branded "L R Thorne" on base. Early collector tag states that Ackerly was the captain of the fishing vessel "Gossum" which was owned by Thorne. Overall an appealing pair of early Long Island bluebills.

1500-2500



99A

99A. **THIS RARE** black-bellied plover ca. 1910 on a carved and painted clamshell (Quahog) base by Crowell is for the collector that wants the very best early carvings by Elmer Crowell. This may be the only example of Elmer's best grade decorative plover to be offered in several years. Early pre-stamp, carved, and raised wing-tips together with carved primaries. Wonderful Crowell dry brushed feather paint. A few very minor rubs in the paint on top of head and very minor wear to tip of tail edge. Signed in pencil on base, "E. Crowell".
45,000-55,000



99B

99B. **Lesser yellowlegs** on a carved rock base by A.E. Crowell. Split tail with head turned to left. Very early carving with a deep Crowell hot oval brand. Fine Crowell paint with dry brushed feathers. Nice patina. The surface has some fine crazing, especially on sides, breast, and under tail. Some professional toning to crazing. Professional repair to right foot and to some very small areas of paint loss on both legs. 15,000-25,000



Elmer Crowell



100



101

100. Exceptional early standing life-size "Bob White" quail in XOC by A. E. Crowell of East Harwich, MA ca 1900-1910. Beautifully carved "stone" base has no brand. Very light crazing on the right side of the neck. Outstanding example of a quail by Cape Cod's pioneer decorative bird carver.

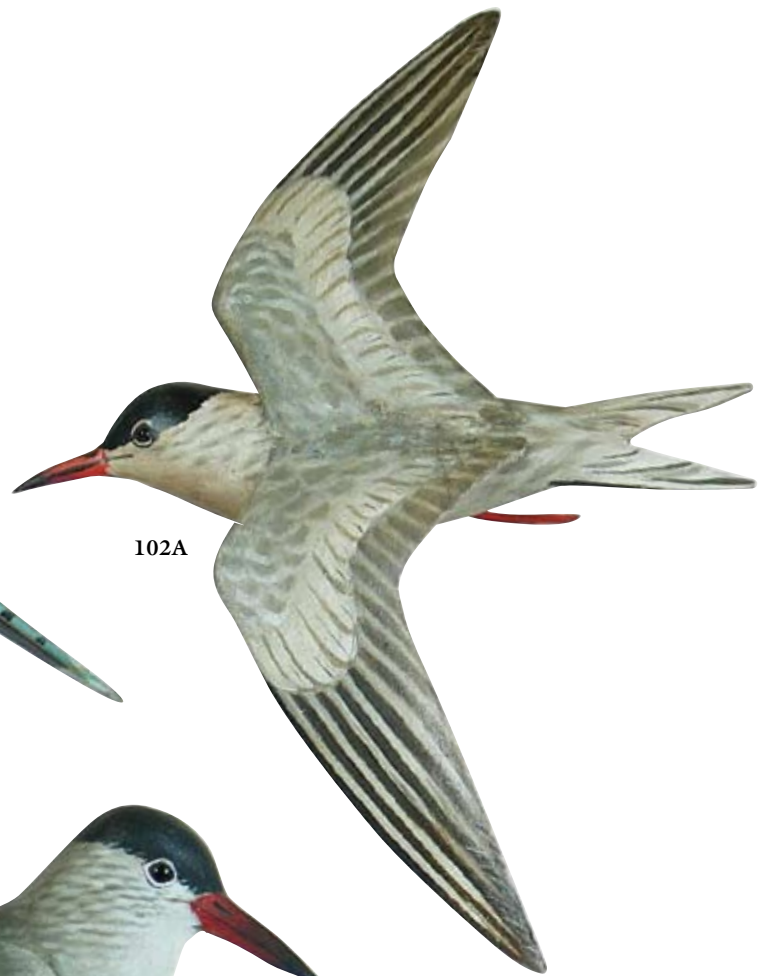
15,000-25,000

101. Exceptional life size female belted kingfisher ca 1916 by A. E. Crowell, East Harwich, MA. Mounted on a unique base carved to resemble a section of tree with a cut branch. Deeply impressed oval hot brand on the bottom of the base. Beautifully carved crest and tail detail. Wonderful patina. In XOC. Minor imperfections. Narrow 1/2" check has been filled professionally above bill.

15,000-25,000



102



102A



103



103
detail

102. Life size standing blue jay ca 1920's on a carved rock base. Raised wings, fluted tail, and well carved bill. Fine original paint with a light accumulation of grunge from age, most notable on the underside of the carving. Light wear and very light crazing to original paint with tiny rubs to primer on top of crest and on tip of bill. Heavier crazing to carved rock base. Possible paint repair to a small scuff under the tail. Retains rectangular stamp as well as the signature "A. E Crowell – Cape Cod". Also has a penciled "M. Lang" on base.

7500-9500

Provenance: Waddell Collection.

102A. Least tern by A. E. Crowell. Arched wings and typical tern forked tail. Made to be screwed to a wall or other mount. Fine original paint with beautiful feather delineation. Body carved from two pieces of wood joined around breast. Repair to center of back. Tight crack in left wing has been restored professionally.

5500-7500

Provenance: Waddell Collection.

103. Life size standing common tern ca 1916 on a carved rock base by A. E. Crowell. Forked tail with split, raised, wing tips. Artistically carved and raised wings and shoulders. Dry original paint with blending of colors evident. Possibly minor repairs to tail tips and wing tips with lesser repairs having been done to the upper portion. Bears the oval brand on the base. One of the finest examples we've handled.

Provenance: Howard Waddell Collection. 9000-12,000



104. Life size sanderling or peep on a carved and painted clamshell base by A. E. Crowell with a split tail. Carving is excellent and original in all respects except for some possible repairs to gesso on toes. Clamshell base has wonderful detail in the hinge area. Retains strong and crisp "Maker" stamp as well as the pencil signature "A.E. Crowell – East Harwich – Mass – Cape Cod". 8000-12,000

Provenance: Waddell Collection

105. Life size piping plover on a carved rock base by Crowell. Split tail with some wing delineation. Dry original paint which has developed a pleasing patina. Excellent original condition. Retains rectangular "Maker" stamp. 8000-9000

Provenance: Waddell Collection.



106. Large hooded merganser drake mini by A. E. Crowell with carved wingtips. In excellent original paint with some very tiny areas of possible t/u or cleaning. The tip of the bill may be professionally t/u. Three small "dots" on breast appear where something has spilled on the bird. Height from base to top of the head, 5 in, length bill to tail, 7 in. Signed in pencil on painted base "A. E. Crowell – Cape Cod – 1933". This is one of the finest and earliest special order large minis he ever made. 6500-8500

Provenance: Howard Waddell Collection



107. Black-backed gull mini on a carved clamshell base by Crowell. Excellent original condition in all respects with only a miniscule scuff to the tip of the bill. Retains rectangular "Maker" stamp. 3000-4500

Provenance: Waddell Collection.



108. Early miniature black-throated green warbler by A. E. Crowell (1862-1952), East Harwich, MA in XOC with minor imperfections usually found on an antique surface. "Black-Throated Green Wab" in ink on the bottom of the base. 1500-2500

Provenance: Talbot collection

109. Rare and early miniature hooded warbler on a circular carved wooden base. In XOC. "Hooded Wab" written in ink on the bottom of the base. 1500-2500

Provenance: Talbot collection

110. Early miniature black-throated gray warbler by A. E. Crowell (1862-1952), East Harwich, MA in XOC with minor imperfections. "Black-Throated Grey Wab" in ink on the bottom of the base. 1500-2500

Provenance: Talbot collection

111. Early miniature king bird by A. E. Crowell (1862-1952), East Harwich, MA in XOC with minor imperfections. "King Bird" in ink on the bottom of the base. 1500-2500

Provenance: Talbot collection

112. Early miniature "veery" (relative of the wood thrush) by A. E. Crowell (1862-1952), East Harwich, MA in XOC with minor imperfections. "Verry" in ink on the bottom of the base. 1500-2500

Provenance: Talbot collection

113. Early miniature woodpecker by A. E. Crowell (1862-1952), East Harwich, MA in XOC with minor imperfections. "Wood Pecker" in ink on the bottom of base. 1500-2500

Provenance: Talbot collection

114. Early miniature red eyed vireo by A. E. Crowell (1862-1952), East Harwich, MA in XOC with tiny imperfections. "Red-Eyed Vireo" in ink on the bottom of base. 1500-2500

Provenance: Talbot collection

115. Early miniature Canada warbler by A. E. Crowell (1862-1952), East Harwich, MA in XOC with tiny imperfections. "Canada Wab" in ink on the bottom of base. 1500-2500

Provenance: Talbot collection

116. Early miniature chestnut-sided warbler by A. E. Crowell (1862-1952), East Harwich, MA in XOC with imperfections. "Chestnut sided wab" in ink on the bottom of the base. 1500-2500

Provenance: Talbot collection



117



117A



118



119(PR)

117. Small whimsy carving of a songbird by A. E. Crowell. Probably made and gifted to the family for their Christmas tree. Wing carving detail, open beak, mounted on a small stick. XOC with a rub to the left edge of the tail. Early carving by Crowell.

500-1500

Provenance: Talbot collection

117A. Delightful, slightly oversized standing hooded merganser drake ca mid to early 1900's from Canada by an unknown highly skilled carver. Beautifully carved raised crest and delineated wing tips. Feet appear to be leather and legs are wrapped in thread or fishing line. Paint shows legitimate age and is all original with no wear but with some minor darkening from time or pipe smoke. Some minor "fly-speck" to back, miniscule chip to edge of crest and some minor shrinkage at neck seam.

1500-2500

118. Bluebill drake, possibly by Tom Chambers. Fine original paint shows overall very light gunning wear. Light areas have darkened slightly over time and there are a few very small rubs to the surface. Rigging has been removed.

500-1000

119. Redhead pair by D. W. Nichols. Carved wings and wing feathers. Tail feathers outlined. Structurally perfect. Original paint is immaculate with only minute rubs to some high points on drake. Never rigged. As nice a pair of birds from this period by this maker as one could hope to find.

Provenance: Swain Collection

1200-1800

The following five decoys are immaculate examples by Reginald T. "Reg" Bloom of Kingston, Ontario, Canada. The birds were acquired by the consignor still wrapped in "The Kingston Whig-Standard" newspaper in which they were shipped dated Nov. 16, 1961. Bloom's carvings done in the 1960's are considered to be among his best works (see page 46 in Stewart and Lunman). It is almost inconcievable that any better pristine examples of this carvers work could be found.



120. Bluebill pair by Reg Bloom. Both have raised wings and heads turned slightly left. Carved and stamped feather detail. Fine combing to the back paint. Two or three tiny dings from shelf wear on left side of hen. Absolutely wonderful pair. 1000-1500

Provenance: Swain Collection



121. Whistler drake by Reg Bloom. Raised wings with carved and stamped feather detail. Carved and raised crest. A few inconsequential rubs from shelf wear. A hairline crack in the neck appears to date to the time of carving. 500-1000

Provenance: Swain Collection



122. Whistler drake by Reg Bloom. Raised wings and head turned slightly to the left. Carved and stamped feathers. Wonderfully carved head with iridescent paint effects. A few very light rubs along sides. Tiny dent left side. Interesting paint variation on back. 500-1000

Provenance: Swain Collection



123. Bluebill hen by Reg Bloom. Raised wings with carved and stamped feather detail. Great combing detail to the back paint. Perfect condition. 500-750

Provenance: Swain Collection



123A. Blue-winged teal hen by D. W. Nichol. Carved and raised feathers on sides and portions of back. Strong vibrant color. Raised wing tips and fluted tail. Excellent original condition. 800-1400

124. Attractive example of a black duck by D. W. Nichols of Smith Falls, Ontario, Canada. Carved and raised wings with fluted tail detail. Original paint with scratch feathering on body and a nicely painted head. Overall light to moderate gunning wear. (see p 88 in Fleming) 300-500

Provenance: Swain Collection



124A. Bluebill drake ca 1940's by Frank Lewis, Ogdensburg, NY. Inlet head. A few small dings and chips to wood. Old tight crack in tail appears to have been repaired at the time the bird was carved. Original paint with combing on back under sealer. 200-400
Provenance: Swain Collection

125. Black duck by Harvey Davern of Bridgeton, Canada. Thick original scratch feather painting over entire body and head. Minor roughage to left rear edge of tail and light rub to top of head otherwise very light wear. Surface has received a coating of sealer. See p 15 in Stewart's book for additional information on Davern. 500-1000
Provenance: Swain Collection

126. Black duck by Billy Ellis (1870-1968) of Whitby, Ontario, Canada. Very subtle and detailed original feather painting with delicate scratch feathering to head. Light wear to body with a few rubs to the head paint. Lightly hit by shot. 500-750
Provenance: Swain Collection

127. Tiny black duck by BB and Ernest Brunet. Scratch feathering to thick original paint. Very light overall wear. Probably carved small so the hunter could carry a larger rig to remote areas. 100-200
Provenance: Swain Collection

128. Hollow black duck by Larry Lunman. Fine original scratch feathered paint with extremely light wear. From Mr. Lunman's personal rig and so noted and signed on bottom with the date 1995. 200-400
Provenance: Swain Collection and X D&J Collection

129. Redhead drake by Peter Pringle of Brockville, Ontario. Distinctively carved wings and tail. Original paint with moderate wear. A few rubs to wood on bill and head. Structurally sound. Appears to have once had a keel. 800-1200
Provenance: Swain Collection

130. Magnum bluebill drake by Ralph Malpage. Malpage carved very much in the style of the Schmidts, Pringle, and Anger. Typical raised wings and ice groove. Old repair to the rear of the neck has come loose. "R/W" carved on bottom. 200-350
Provenance: Swain Collection

131. Early model black duck by Ken Anger. Old repair to crack in neck with some overpaint in that area. A few small rubs to wood on head but overall light wear. Possibly never rigged. 750-1250
Provenance: Swain Collection

132. Early redhead hen by Ken Anger. Content low head with typical Anger rasping and wingtip delineation. Original paint with moderate overall gunning wear. Excellent structural condition. 600-900



133. Plump early pair of bluebills ca 1930 by Ken Anger of Dunnville, Ontario. Drake is two piece construction and possibly hollow. Good areas of original paint with an old wash possible on the white sides. A few small areas of the black on the head have been strengthened. Hen is hollow with a bottom board which has been refastened and painted with what appears to be marine bottom paint. Body is typically rasped with light gunning wear to original paint. Both have unique keels which are notched to receive the anchor line.
Provenance: Swain Collection 800-1200

134. Redhead drake from Ontario, Canada. Combination of much original and some in use touch up. Light gunning rubs and dings. Deep "W. A. A." brand on bottom.
Provenance: Swain Collection 500-1000

135. Hollow black duck by Rick Koch. Head turned slightly to right. Ice groove with raised wing tip. Original paint shows moderate gunning wear with the expected rubs. Stamped on bottom "Dr Koch" and used in his hunting rig.
Provenance: Swain Collection 300-450

135A. Pair of bluebills by Spud Norman (Kingston, Ontario, Canada c.1899-c1977). Hen has head turned slightly to the left. Deep feather carving on raised wings and fluted detail to tail. Detail head carving. Original paint with a few rubs to primer on head and lightly hit by shot on right side. Drake also has deep feather carving on raised wings with

fluted tail detail. Detail head carving. Fine original paint with no wear to speak of. Both retain original swing weights. He reportedly only made a few decoys for himself and a few close friends. Considered his best bluebill model (see Stewart and Lunman)
400-800
Provenance: Swain Collection

136. Swimming black duck. Never rigged and in near mint original condition. Signed on bottom – "Black duck -Ernie Fox – Brockville, Ont." Collector info indicates that the carving was done c 1955. Minor dent on left side. 400-800
Provenance: Swain Collection

137. Pintail drake by an unknown Midwest maker. Heavily rasped surface with original paint under a coat of sealer. Excellent condition. 200-400
Provenance: Swain Collection

138. Pair of mallards by Ralph Malpage. Both are in excellent condition with original paint. Both have raised wings and extensive, deeply stamped feathering, fluted tails and rasping to rear of heads. Keels have been removed.
Provenance: Swain Collection 350-550



139



140



141

139. Very rare long billed curlew by the Mason factory. Metal bill is original. Extremely fine separation at the neck seam and a small extra “coat hanger” size hole in the bottom, otherwise in excellent structural condition. Fine original paint shows light to moderate gunning wear with some rubs. An old (3/8”) knot is visible on the breast. The bird has been gunned over and, as such, is an extremely desirable and classic example of a rare decoy by this famous decoy factory.
Provenance: Waddell Collection. 15,000-25,000

140. Glass eye yellowlegs by the Mason factory ca 1905. This is the very bird pictured on page 103 of the definitive reference by Goldberger and Haid. Metal bill appears to be original. In superb original condition, the decoy seems to have received very little use. Excellent original paint with a few very small rubs and blemishes. There are a few old drips of some clear liquid under the tail.
5500-6500
Provenance: Waddell Collection, X Harold Corbin Collection

141. Tack eye willet by the Mason factory. Metal bill appears to be original. Outstanding structural condition. Paint pattern and detail is clearly visible. Probably a special order for the Alexandria Bay area of upstate NY.
6500-8500
Provenance: Waddell Collection.



142. **Rare Mason split tail tackeye dowitcher with wooden bill ca 1900.** This is the exact bird pictured on page 109 in the authoritative Goldberger and Haid reference. All original paint with some wear and darkening on the bottom and lower sides from time and use. Chip and small shot scar under base of tail. A few small rubs to wood on bill and at base of bill. Some sealant type drips on left side. 4500-6500
Provenance: Waddell Collection.

143. **Mason Factory tack eye nail bill golden plover in fall plumage in good OP.** Flake from the right edge of the tail. Two thin age checks in the right side of the body do not detract. A coat of wax on the surface has yellowed. Nice example. See the lower right photo on the bottom of page 101 in Mason decoys by Goldberger and Haid for a similar example. 3500-4500

144. **Standard grade glass eye American merganser hen by the Mason factory ca 1905.** This is the exact decoy pictured in the pair on the bottom of page 74 in the definitive Goldberger and Haid reference. Neck filler missing and head has been glued so as not to swivel. Right glass eye is cracked. Three knots on body. A few minor dings and dents, especially on the right side. All original paint with nice Mason swirling. Light rubs to bill and tail tips. Acquired by Mr. Waddell in 1974. 1500-2500
Provenance: Waddell Collection, X Bud Ward Collection.

144A. **Standard grade glass eye American merganser drake by the Mason Factory ca 1905.** This is the exact decoy pictured in the pair on the bottom of page 74 in the definitive Goldberger and Haid reference. Thin crack runs length of bottom and extends slightly up under tail and up breast. Neck filler appears original. Outstanding original paint with only very minor wear. There is a very light spattering of tan or white paint flecks (ceiling paint?) on the top of head and back. Acquired by Mr. Waddell in 1978. 2000-3000
Provenance: Waddell Collection.



145. **Mason standard grade glass eye bluebill drake ca 1905.** Broadbill model with spectacular wide bill. Excellent original condition. This is the exact bird pictured both on the top and bottom of page 43 in the definitive Goldberger and Haid reference. Strong original swirled paint in overall excellent condition. A few light rubs to the white areas. A number of small areas on sides still show the markings left from the newsprint from shipping. Stamped "GWT" within a figural goose on bottom. Acquired by Mr. Waddell in 1972.

400-700

Provenance: Waddell Collection, X George Thompson Collection

146. **Tack eye bluebill drake in the style of a Mason standard grade.** Partially repainted as a black duck. Crazed and worn gunning paint.

75-125

147. **Standard grade, tack eye, whistler drake by the Mason factory.** Partial original neck filler. Well worn gunning decoy with large areas worn to wood with small checks and shot scars to the body.

200-300

Provenance: Waddell Collection.

148. **Very rare Mason standard grade tack eye whistler hen.** See page 67 in Goldberger and Haid for a similar example. Some minor paint loss to original filler around left eye. Some neck filler possibly replaced. Structurally fine condition except for a tight knot check on lower left side. Original paint shows light to moderate overall wear with some areas across the center of back and one area on breast worn to wood.

Provenance: Waddell Collection.

1500-2500

149. **Early snaky head Mason Premier Factory mallard hen ca 1905.** Paint is fine original condition except for t/u on the top of the tail where there was tail chip damage. A lower neck check that ran half way around the neck has been filled as has a narrow upper body check. That piece has been re-attached professionally. A knot has been touched up in the same area.

1800-2400



150



151



152



153



154

150. Challenge grade redhead drake by the Mason Factory. Thin crack runs the length of the bottom but is basically confined to that area. Excellent structural condition. Excellent original swirled paint. Breast exhibits some noticeable wear to wood in a "L" shape (approx 1/12" X 1 1/2") on left side as well as some rubs to lower breast. Acquired by Mr Waddell in 1972. 3500-4500
Provenance: Waddell Collection.

151. Nearly perfect example of a challenge grade redhead hen by the Mason factory. Structurally perfect with no cracks or checks. Swirled original paint shows a small area of wear on top of head and some very minor wear to tip of tail. It would be hard to imagine a decoy that has been gunned over to have survived in any better shape than this example. Acquired by Mr. Waddell in 1975. 3500-4500
Provenance: Waddell Collection.

152. Mason standard grade glass eye mallard hen. Head lifted slightly from neck seat with some original filler present. Thin dent in back appears to date to factory. In fine original paint with a few small dings and rubs to primer or wood. Small inlet weight in bottom. Acquired by Mr. Waddell in 1975.
Provenance: Waddell Collection. 500-900

153. Standard grade glass eye bluebill hen by the Mason factory. A thin crack runs the length of the bottom and there is a very small area of roughage on the left forward edge of the bill. Excellent original paint with minor imperfections. Original neck filler with one tiny piece missing in rear.
Provenance: Howard Waddell Collection. 400-600

154. Mason painted eye broadbill model of a bluebill drake. Neck filler missing. Thin tight check runs length of back. Rough spots on bottom from rigging staples. Excellent original paint shows light wear overall. 200-300
Provenance: Howard Waddell Collection



155



155A



156

155. Exceedingly rare brant decoy ca early 1900's by George Boyd of Seabrook New Hampshire. Very good structural condition. Paint is crazed in places. This surface trait is often found on his decoys. The body has been painted a second time by Boyd and the bottom of the decoy is nearly void of paint. The neck and head are in all original paint and have an enamel sheen. The body paint is less glossy. Typical Boyd paint and feathering on the body. This decoy is as found in rig condition.

15,000-25,000

155A. Bold large solid-bodied goldeneye drake ca 1910 by George Boyd of Seabrook NH. In good working paint some of which is original. Overall gunning wear. Check along the center of the back has opened and filler has cracked. A narrow check is in the breast near the neck. Impressed "FPM" brand in the back.

2000-3000

156. Mallard drake by Crowell. Head turned slightly to the right. Elmer's "Challenge" grade decoy featuring fluted tail carving and typical rasping to breast and rear of head. Mostly original paint with numerous very small rubs to wood on left side and back. A few tiny rubs to tail. There are some areas on both sides that have been in-painted and some of the primary wing feather strengthened.

6500-9500

157. **Bluebill drake by Keyes Chadwick.** Head turned to the left. The old filled tight check on back and a shallow dent on left wing are original and appear to date to time of carving. Early original paint with moderate overall gunning wear. Some small rubs to primer and/or wood. From the famous "FOOTE" rig and so branded. 1200-1800



158. **Racy merganser ca 1860-1870 from Martha's Vineyard, Massachusetts.** This is the exact bird pictured on page 131, plates 104 and 105 in *Martha's Vineyard Decoys* by Stanley Murphy. According to Mr. Murphy, although his name is lost to history, "the man who carved this odd, wonderful, tiny red breasted merganser female was an ex-slave who worked for a retired sea captain, Benjamin Cromwell of Vineyard Haven, for some years after the Civil War". Inlet head and original paint with some crazing, rubs and chipping to bare wood. 2500-3500



159. **Canada goose ca 1920's by Joe Lincoln.** Head paint appears to be original. Body is old gunning repaint with moderate wear. From the Brayton rig, Westport, MA. Typical check in bottom. 1500-2500



160. **Very rare special order oversized solid "loomer" Canada goose ca 1900 by Joe Lincoln.** Probably ordered for use on large bodies of rough water. Head is of a style and size Lincoln commonly used on his slat geese. The body, with its very unusual raised tail is massive, yet very well proportioned. Head paint is original with wear to wood from use. Body is a combination of some original and some gunning touch-up with some specks on back. A number of small cracks and checks in body and one larger one on bottom right side. Rectangular patch by Lincoln on left side. A significant study piece for the serious Lincoln collector. 3500-4500
Provenance: Waddell collection.



161. **Wonderful Canada goose ca 1900 with "folk" appeal from Cape Cod.** Lightly delineated wing tips with head arched forward in a swimming pose. A few thin checks in body and an old crack runs length of back with some repairs to the rear end of the crack. Old break in neck has been repaired many years ago with some darkening to the paint in this area. Original paint has crazed with age and exhibits moderate to heavy gunning and ice wear. Large areas on breast and smaller areas under tail have worn to wood and these areas have developed a warm patina with age. This stylish decoy was acquired by Mr. Waddell in 1966 and was one of his favorites marked "this decoy not for sale". 1500-2500
Provenance: Waddell Collection.





162. **White-winged scoter** by Joseph Lincoln, Accord, MA. His innovative self bailing model. In excellent original paint with very little wear. A few rubs to surface. Moderately struck by shot, mostly on right side. Small tight checks on left breast and lower left side. Original Lincoln rectangular pad weight. 5500-7500

163. **White-wing scoter** by Clinton Keith ca 1900 of Kingston, MA. Canvas over frame construction which was somewhat unique to this section of the Massachusetts coast. Mostly original paint with a few minor rubs to canvas in some of the seams and tail tip. White wing patches are probably gunning touchup. Bottom branded "C.T. Keith". For an explanation of this type of construction see page 54 in Starr. 500-1000

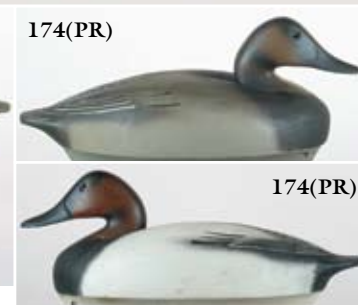
163A. **Black duck** decoy by J. H. Whitney, Falmouth, ME "J. H. Whitney". Maker and "L. A. Francis" owner hot branded on the bottom. In XOC. Never rigged or used. Probably the original coat of sealer. Whitney is known for his huge decoys and this smaller (13 in) size is unusual. 300-450

163B. **Goldeneye** decoy by J. H. Whitney, Falmouth, ME "J. H. Whitney" Maker and "L. A. Francis" hot branded on the bottom. In XOC. Never rigged or used. Probably original coat of sealer. Whitney is known for his huge decoys and this smaller (13 in) size is unusual. 300-450

164. Lot of two "huge" whistler drakes ca 1950's by James Whitney of Falmouth, Foreside, ME. One has head turned sharply to the left. Both are in original out-of-rig condition with overpaint over original. Rubs and wear. Very good structural condition. Both deeply branded "J.H. Whitney". 200-400

165. **Black duck** by Whitney, Falmouth Foreside, Maine. Original paint with moderate gunning wear with a uniform light scattering of dings and rubs. Chip missing from underside of bill otherwise good structural condition. 200-400

166. **Very unusual pair of extremely huge oversized blacks** by J. Whitney of Falmouth Foreside, Maine. Undoubtedly intended as loomers for use on the outer beaches of Cape Cod. One head turned back as a sleeper or preener. In old paint over original with light gunning wear. Both have the hot "Whitney" brand on bottom. 200-400



167. Half-size eider ca early 1900's with typical Maine inlet head and carved bill. In age darkened natural wood finish with some water staining along lower edge. Attributed to "Gus" Wilson. 200-400

168. Three black ducks attributed to George L. Whitmore of Newburyport, Ma. - 1859-1954, (see Williamson). Hollow with vertical laminated construction. Two have heads turned to right or left and one has a straight forward head which is loose. Original paint with light to moderate in-use wear and minor crazing. Decoy with loose head has more wear than the other two. 1200-1800

169. Petite hooded merganser hen ca 1910 from Cape Cod. Good structural conditions with some original and a good amount of in use gunning touchup. 800-1200

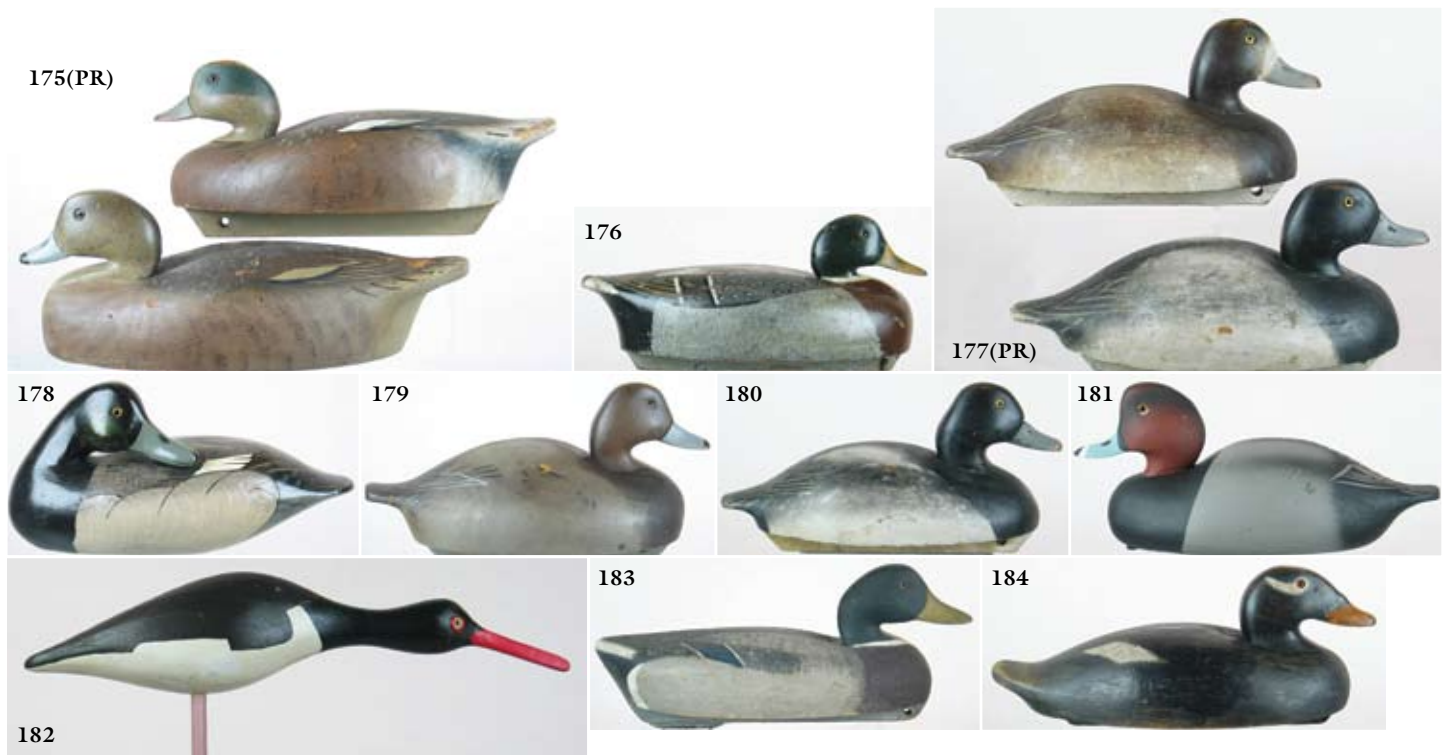
170. Connecticut black duck ca 1940's by the late Phil Fairbank of Essex, CT. Hollowed from below with no bottom board to create a vacuum for better flotation. Darkened yet excellent original paint with no apparent wear. Appears never to have been rigged. Thin, tight crack in neck. 300-500

171. Bufflehead drake ca 1940's by Phil Fairbank. Modeled after wildfowler decoys. Mr. Fairbank was a good friend of Ted Mulliken and Joel Barber. In excellent original paint. 300-500
Provenance: Fairbank collection

172. Two Wildfowler canvasback drakes. One is balsa in very good structural condition. Original paint shows light overall gunning wear. There is a stain in an arc behind the head where it appears something spilled on the bird. Retains original keel but no factory stamp. Second is oversized two piece pine or cedar with head turned slightly to left. Heavily textured surface with numerous small areas of in-painting. Thin crack apparent on back. Bird has received a heavy coat of sealer. Retains keel but no factory stamp. Branded "JGM".
Provenance: Swain Collection 300-450

173. Wildfowler factory pair of balsa bluebills. Hen has hairline crack on left side which does not detract. Very good original paint which shows a few light dings and rubs from wear. Original keel and factory "Old Saybrook" stamp on bottom. Drake is in excellent structural condition with fine original paint which exhibits extremely light wear. Head may have a thin coat of sealer. Original keel but no factory stamp.
Provenance: Swain Collection 300-400

174. Pair of balsa Wildfowler canvasbacks. Both have inlet head and a deep ice groove. Both are in excellent original paint and condition. Retain original keels but no factory stamp.
Provenance: Swain Collection 300-450



175. **Pair of balsa Wildfowler widgeons.** Drake has moderate wear to original paint. Rubs to wood on tip of tail and top sides of head. Head slightly loose and left glass eye cracked. Retains original keel. No stamp. Hen has light to moderate wear to original paint. Keel removed and no stamp. 400-600
Provenance: Swain Collection

176. **Wildfowler mallard drake.** Early inlet lowhead style of hollow pine or cedar with no structural flaws. Repaint by Edna Perdew shows moderate to heavy wear with some rubs to wood. Original keel and Old Saybrook stamp. 150-225
Provenance: Swain Collection

177. **Pair of balsa Wildfowler bluebills.** Original paint shows light gunning wear with a few small dents and rubs – some to wood. Overall very good. Retains original keel and Old Saybrook stamp. Hen has the name “Charles” carved into the bottom. 200-400
Provenance: Swain Collection

178. **Wildfowler preening bluebill drake.** Excellent structural condition with thick original paint under a coat of sealer. Very nice combing on back with incised wing feathers. Retains Babylon, NY stamp. 200-400
Provenance: Swain Collection

179. **Wildfowler redhead hen. Oversized model in very good original condition with a few scratches and dings on each side.** A few minor rubs to original paint on head and tip of tail. A few black scuffs on right side. Retains original keel and Old Saybrook stamp. 200-300
Provenance: Swain Collection

180. **Wildfowler bluebill drake with the Old Saybrook stamp on the bottom.** May be made of dense pine for the head and heavy balsa for the body. 150-250
Provenance: Swain Collection

181. **Barnegat Bay Decoys redhead drake.** Very small separation becoming visible in the two-piece construction under the tail and the beginnings of a very small check showing in the left rear area. Fine original paint with a few very tiny dings. Overall very good. Retains original keel and Old Saybrook stamp. Deep “GUTWEIN” hot brand on bottom. Signed “Barnegat Bay Decoys – Point Pleasant, New Jersey” as well as with the signatures of the three owners of the factory “Fredrick C. Brown, A.J. Birdsall and Chip Allsopp”. 150-250
Provenance: Swain Collection

182. **Wildfowler oyster catcher.** Decorative in a running pose. Original in all respects. Surface has a coat of finish feeder. 150-250
Provenance: Swain Collection

183. **Wildfowler regular size “Feather Finish Model” mallard drake in fine original condition with very light gunning wear.** 200-300
Provenance: Fairbank collection

184. **Wildfowler white-winged scoter.** Balsa construction. Some original paint with large areas where a wash has been applied. Shows moderate to heavy gunning wear. Very good structural condition. Retains original keel but no factory stamp. Scoters were not a common species for any of the Wildfowler factories. 200-400
Provenance: Swain Collection



185



186A



187



189



190



186(PR)



188

185. **Hollow pintail drake by Mark McNair.** Head turned to the right. Mint and original in all respects with beautifully antiqued, thick, rich paint. Carved "McNair" in the bottom as well as "John Congnest" scratched into the paint.

Provenance: Waddell Collection.

1200-1800

186. **Pair of wood ducks by Mark McNair.** Hollow construction. Mr. McNair's earliest work. Done in the Cobb Island style. Some extremely minor rubs to excellent original surface. Signed on bottom: "mMs".

2000-3000

186A. **"Cobb Island" Canada goose by Mark McNair.** Beautifully antiqued original McNair paint. Slight separation at neck seam may be intentional by Mr. McNair. Excellent example with "McNair" carved into the bottom.

2500-3000

187. **Hollow swimming brant by Mark McNair.** Split tail with head turned slightly downward and to the left in an animated pose. All original McNair paint. Some very minor specks on back and a tiny rub on top of head. Bottom has carved "McNair". Intended as a presentation piece with the following inscription carved into the bottom: "To boss – with the fondest of memories and much love always – the crew – Little Stone House, Sept 27, 1977."

1500-2500

188. **Mallard drake by C. R. Wells.** Two-piece body and partially hollow. Head turned slightly to the right. Good original paint. Probably one of his last decoys yet still very reminiscent of the Stratford school and the Shang Wheeler influence. Branded "C R W".

500-1000

189. **Preening black duck by C. R. Wells (Stratford, Conn.).** Two piece body which may be partially hollowed. Apparently one of his later carvings. Original paint with pencil lines still evident. Branded numerous times on bottom "CRW".

800-1200

190. **Running curlew ca. 1950's by the late Phil Fairbank of Essex, CT.** Fairbank was an associate of Ted Mulliken and Joel Barber. Fitted with a nail bill. XOC.

300-500



191. **Black-bellied plover** by **Phil Fairbank** of **Essex, Connecticut**. Carved ca. 1950's with delicately carved wingtips. Excellent original paint and condition. 300-500
Provenance: Joe French collection.

192. **Green-winged teal drake** with **glass eyes** by the late **Phil Fairbank** of **Essex, CT**. In XOC. This decoy clearly shows the influence of Barber and Mulliken. 250-450
Provenance: Fairbank collection

193. **Pair of broadbills** by **Phil Fairbank**. In XOC. Fitted with wooden weighted keels. 200-400
Provenance: Fairbank collection

194. **Wonderful example of a flying black duck working decoy**. Designed as a stick-up or to use with a screw eye to appear to be hovering above the rest of the rig or pitching in for a landing. Applied metal wings with nicely carved head and tail. Original paint with light to moderate gunning wear and some minor rubs to wood. Lightly hit by shot on top and right side. Tiny hairline check on bottom. Bill appears to have been made in two pieces or is an old repair. 1500-2500

195. **Cape Cod, Canada goose weathervane** done after a **Crowell pattern**, possibly made by the late **Harry Sprong**. Crusty, weathered original paint. Wings have been reattached in a different location than original. 300-500

196. **Calling brant** by **Ken Harris**, **Woodville, N.Y.** His finest model in a swimming pose with head turned to the left. Carved and raised wing tips with fluted tail. Excellent original paint. "By Ken Harris – Woodville, N.Y." brand on bottom. 1200-1800

197. **Pintail drake** by **Ken Harris**. All original paint with practically no wear. A few sap bleeds on left breast and head as well as some very minor fly speck. Minimal rubs to tail tip and base from shelf wear. Never rigged and in excellent structural condition. No stamp. 300-500

198. **Preening pintail drake** by **Reggie Birch**. Done in the style of the famous Crowell preening pintail with crossed wingtips and carved primaries. In XOC. Carved "R. Birch" in bottom. 800-1200



199



200



204



201(2)



201(2)



202



203

199. Oldsquaw drake by Bob Pease of Taunton, MA. Original paint with light overall gunning wear. Oversized cork body construction with one metal tail feather missing. Stamped on keel "Bob Pease 1958". Pine head and keel.
Provenance: Swain Collection 200-400

200. Rare folding tin ruddy turnstone with "Strater's Pat. Oct. 27, 1874" stenciled on the inside. In XOC with the original mounting stick. Near mint with minor rubs.
Provenance: Waddell collection 800-1200

201. Lot of two tin folding yellowlegs with stakes. Both in XOC with only a few small surface chips. Small dent at base of one bill and some possible straightening with minor paint loss in that area.
Provenance: Howard Waddell Collection. 400-600

202. Glass eye crow by the Pratt factory. In XOC with a few small dents in the body and tiny dings centered in the tail area. Wire legs have been removed and a single mounting hole has been drilled into the bottom.
Provenance: Howard Waddell Collection 700-900

203. Antiqued sign, 30 3/4" X 19 1/2". "A. E. Crowell & Son, Songless Aviary, E. Harwich, Mass" ready for hanging. In XOC. 200-400

204. Swing handle Nantucket basket by Ferdinand Sylvaro. 9 3/4" diameter with a couple minor breaks. Nice patina. Has original stamp on bottom which reads: "Made By - Ferdinand Sylvaro - Nantucket". 800-1200



204A. Original photograph, taken on August 1917 of a three-masted schooner from Barbados taken off West Chop, Martha's Vineyard. Photo taken by B. K. Hough from Catboat "Mary Knap" returning to Mattapoissett from Nantucket. 200-400

204B. Oil painting on canvas or linen, 15 ½" X 21 ½", of a side wheeler of the "Brother Jonathan" signed lower right Karl Janson. Cracked canvas with some staining and damage. Note on back. "After conversion in 1852?" Formerly gold rush treasure ship. 200-400

204C. Pencil and watercolor on paper of an early battleship flying the American flag. Excellent condition, nicely framed. Sight size is 8" X 14". 700-900

204D. Framed lithograph "Soul of Sail". Sight size 15" X 21". (Edition of 125 prints done in 1961) by John Noble (1913-1983). In excellent condition. His work can be found in the Noble Maritime Collection on Staten Island, a museum dedicated to preserving and interpreting the art, writings, and historical maritime artifacts of the distinguished marine artist, John A. Noble. Signed lower right. 750-1250

204E. Framed lithograph "Mortera Genova" by John Noble (1913-1983). A 1948 limited edition of 250. In excellent condition. Sight size 8 ¾ X 12". Additional information about this ship is available from the Noble Maritime Collection on Staten Island, NY. 500-1000

204F. American sloop "Margaret" with the lightship "Rescue" on the left by Jerome Howes. American flag and Cuttyhunk flag flying from the top of the masts. Sight size 24" x 36". O/C gold frame. In XOC in all respects. 1500-2500

204G. O/C of the side wheeler "Nantucket" by Jerome Howes, 18" x 32" gold frame. In excellent original condition. 1500-2500



204H. Catboats racing on board. Signed lower right by Jerome Howes. Sight size 17 ½" X 23". 900-1200

204I. Ship painting on canvas of the steamer St. Paul, by Jerome Howes. Sight size is 19 ½" X 29 ½". 1500-2500

204J. Trompe L'oeil by Jerome Howes. A sextant, postcards, and miniature portrait of a young man. 29" X 23 ¼". 900-1200

204K. The tug "Ariosa" flying the American flag. A painting by noted marine artist Jerome Howes with a schooner in the background. Oil on canvas. Sight size is 19 ¾" X 29 ½". 1200-1800

205. Lot of two BB guns. One is a lever action, No. 111, model 40 Daisy Red Ryder Carbine with minor surface rust and a few scratches. One is a pump action No 25 Daisy. Minor wear to bluing and a few minor scratches. 200-400

206. Carved figure of a bare knuckled boxer. Approximately 15" tall. Craze paint, with rubs to various high points. Visible separation at joint in left arm. 300-500



207. **Metal reed, tongue pincer style call.** Silver colored end and band with a rosewood or similar body. Few small dents in metal end. 200-300

208. **Early fire mark.** Features four cast metal, clasped hands and separately applied 1752 numbers. All mounted on a mahogany type plaque. Metal parts show minor pitting and crystals from outdoor exposure. Overall measurements approx. 16" X 10 ½". 150-200

209. **Lot of two period oval cast metal fire marks.** One features a tree and the other an eagle with outstretched wings. Eagle has crazed paint with a little rust and measures approx. 11" X 8". The tree shows much heavier rust and flaking paint and measures about 8 ¼" X 12 ¼". 200-300

210. **Lot of two period oval cast metal fire marks.** One features what appears to be a hydrant and coiled hose with the letters "F" and "A". The other features an early steam fire engine and the letters "U" and "F". Both have crazed paint. Fire engine shows little rust while the "hydrant" exhibits a fair degree of rust and flaking. "Hydrant" measures approx 11 ¾" X 7 ½" and the engine measures approx. 11 ¾" X 9". 200-300

211. **Early college fraternity plaque mounted on an oak panel.** Brass or brass-like material. Features a star and crescent moon with the Greek letters Alpha, Delta, Phi and the date 1832 surrounded by a rectangular rope motif. This fraternity was started at Hamilton, College in NY as a literary fraternity in 1832. Overall measurements approx. 16" X 11 ½". Excellent condition. 100-300

212. **Lot of two.** A miniature white-winged scoter and a miniature eider drake by Marty Collins of Cape Cod, Ma. Scoter is carved in the manner of a Joe Lincoln. Eider is typical of Maine makers with an inlet head and neck. "M Collins – 1995" carved in bottom of both. In XOC. 200-400
Provenance: Waddell collection.

213. **Extremely well done pair of miniature common eiders on a double carved and painted rock base by noted Cape Cod carver Marty Collins.** Signed on bottom "#1 pair – Common Eider". Two "Martin Collins Decoys" ink stamps. 200-400
Provenance: Waddell Collection

214. **Extremely well done pair of miniature white wing scoters on a double carved and painted rock base by noted Cape Cod carver Marty Collins.** Signed on bottom "White wing Scoters #1 pair – 1998" and printed "Martin D Collins – Decoy Maker". 200-400
Provenance: Howard Waddell Collection.



215. Merganser drake mini by noted Cape Cod carver Marty Collins. Carved in the manner of Willie Ross. In XOC. Carved into bottom "M Collins – 1995". 100-300
Provenance: Waddell Collection.

216. Roughed out carving of a bluebill head. Probably of New Jersey origin. Natural wood. 25-50
Provenance: Waddell Collection.

217. Chickadee on a natural driftwood base by Wendell Gilley. Subtle wing and tail detail with nicely blended paint. All original paint and condition with minute rubs to each tip of tail edge. Stamped on bottom "Wendell H Gilley – Southwest Harbor – Maine 04679". A museum in Southwest Harbor is dedicated to Mr. Gilley's work. 850-950
Provenance: Waddell Collection.

218. Three-quarter size winter wren by Warrilow. Perky upswept tail and dropped wings so typical of the species. Excellent and original in all respects. Signed on bottom "Winter Wren – Mary M Warrilow – 7/80". 250-350
Provenance: Waddell Collection.

219. Life size chickadee on burl by Warrilow. Very detailed piece. Head turned slightly to the left. XOC in all respects. Signed on bottom "Chickadee - Mary M Warrilow – 1983". 250-350
Provenance: Waddell Collection.

220. Life size chickadee on a natural branch by Mary Worrilow. Excellent and original. Signed on bottom "Chickadee – Mary M Warrilow – 6/78". 250-350
Provenance: Howard Waddell Collection

221. Pair of hollow mallards by Charles Perdew (1874-1963). Hen is in good original condition with a very tiny separation along the body seam. Original paint with areas worn to primer. Edge of tail worn and small rubs to top of head. Drake has light to moderate wear to original paint. A few areas of small dings and rubs to paint from in use wear. Two small dents or scratches on back. 4500-6500
Provenance: Swain Collection, X Pitt Collection

221A. Rare red cedar duck call by Charles Perdew (1874-1963). German silver bands and decorative rings on stoppers. Partial tiny hairline check on one side appears to date to time of turning. Nice grain and color to wood. Stamped "Chas. H. Perdew, Henry, Ill." 200-400
Provenance: Swain Collection

222. Pintail drake ca mid to early 1900's by Perry Wilcoxin (1862-1954), Liverpool Ill. A few tiny dents on back and tail of decoy otherwise very good structural condition. Old crazed original paint with light to moderate gunning wear. Surface is slightly darkened from age. Bird may have a light coat of wax or sealer. 400-600
Provenance: Swain Collection

223. Mallard drake by Perry Wilcoxin (1862-1954). Fine original paint with a light coat of finish feeder. Light gunning wear. Small chip out of left edge of tail. 400-600
Provenance: Swain Collection



223A



224



225



226



227



230(PR)



231



228(PR)



229

223A. Mallard drake decoy by G. Bert Graves (1887-1956) Peoria, IL. Hollow, glass eyes. Fine OP with light in use wear and a few rubs. Sealer protects the surface. Original "B. Graves Decoys, Peoria, IL" lead weight on the bottom. 1500-2200
Provenance: Swain Collection.

224. Pintail drake by Louis P. Kelly ((1878-1958) of Peoria, Ill. In a combination of original and restored paint with a coat of sealer. Most of the white has been strengthened or over painted. Old tight crack in bill. 1200-1800
Provenance: Swain Collection, X Pitt Collection

225. Mallard drake by Judge Glenn Cameron (1882-1958). Some very minor separation along body seam. Light wear to paint with touch up on lower right side. Bird has received a heavy coat of sealer. "GJC" brand on bottom. 300-500
Provenance: Swain Collection

226. Tack eye mallard drake by William Thomas Shaw (1849-1927). (Collector info on tag). Old repair to body seam. Well worn original paint with the pattern remaining clearly visible. A few small dents and dings. Bottom has "GHC" carved into it. Nice lines. 1500-2500
Provenance: Swain Collection

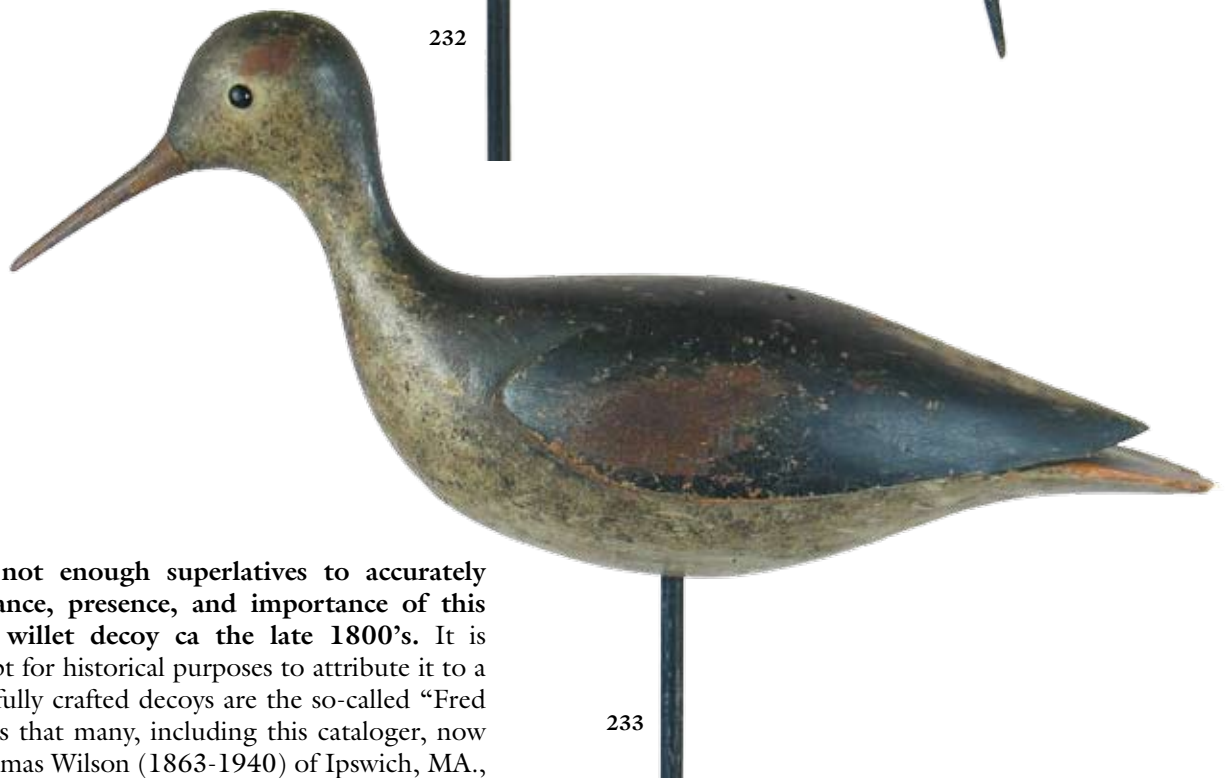
227. Pintail drake by Charles Perdew (1874-1963). In excellent structural condition. Professionally restored and repainted. 750-950
Provenance: Swain Collection

228. Fine pair of pinch breast mallards by Charles Buchanan, Augusta, Ontario ca 1960. Drake is in the alert position while the hen is in the tucked head or "sleepy" pose. Raised and carved wings with fluted tails. Rasping and/or checkering clearly visible. Rich original paint. Never rigged, excellent and original in every respect. Collector info indicates that this pair was sold in the 2004 Aiken sale. 500-1000
Provenance: Swain Collection

229. Bluebill hen by Virgil Lashbrook, 1975. Tight neck check with a few flakes off under the neck in the front. Signed on the bottom, "Virgil Lashbrook, 1975." In excellent original condition. 800-1200

230. Miniature pair of pintails by Cline McAlpin. Carved raised wings on both. Hen in a preening pose over the right shoulder. Delicate original paint is in perfect condition on both except for a small repair to the back of the neck on the hen. 300-500
Provenance: Swain Collection

231. Life size green-winged teal hen guarding her nest with four eggs and one hatchling. In XOC, on an octagonal environmental base. 14in. x 13 in. Signed by the artist "J Robison" of Pekin, IL. 1200-1800



232. There are not enough superlatives to accurately capture the elegance, presence, and importance of this oversize feeding willet decoy ca the late 1800's. It is unimportant except for historical purposes to attribute it to a maker. These skillfully crafted decoys are the so-called "Fred Nichol" shorebirds that many, including this cataloger, now feel that John Thomas Wilson (1863-1940) of Ipswich, MA., skillfully made. Wilson emigrated with his wife to the United States sometime in the 1880's and began making decoys and guiding in the Ipswich marshes in the 1880's. Wings are carved in deep relief. The wide rounded tail extends over the tail split. Made without eyes. There is a little surface wear on the high spots on the sides of the head where the eyes would ordinarily be. About an inch has been added to the bill and a couple of tail chips were restored by Ken Delong. The tight neck checks on both decoys were stabilized by Mr. Delong. Other than a few minor dings and minor imperfections on the body the paint is in excellent original condition with a nice patina. This is truly a prize for the serious collector. The decoy is 20 inches long from the tip of the bill along the top of the body to the tail. The girth is 12 inches. A straight line measurement from the bill tip to the tail tip is 15 inches. 75,000-125,000

233. Rig mate to the feeding willet dating as well to the late 1800's. It is 15 $\frac{3}{4}$ inches in a straight line from bill tip to tail tip. The girth is 12 inches. The wings are also carved in deep relief. The wide rounded tail extends below the split wing tips. The eyes appear to be shoe buttons. The bill is all original. There is a very small chip missing off the top of the tail tip and some paint loss mostly on the sides of the upper wings which does not detract. Struck by a few shot.

50,000-75,000



234



235

234. Classic plump split tail black-bellied plover ca 1900 from Cape Cod or Massachusetts's south shore. Structurally excellent except for a few tiny shot marks and one old tiny chip to left rear edge of tail. Good original paint with light gunning wear to high spots and a few grain lines. Two tiny rubs to wood on left side. Some minor filler loss in around shoe button eyes. Bill appears original. Brand on bottom may be "D or C".

8500-9500

Provenance: Waddell Collection



236

235. Hollow, split tail, black-bellied plover from Cape Cod. Bird is very lightweight as it was carved from two pieces which were assembled vertically. Elongated stick hole to allow for either rigid or flexible positioning. Very minor separation along body seams and some minor chipping under lower tail. Good original paint is nicely crazed with some light rubs and wear on the right side and bottom. Some paint loss in an area of an old collectors jelly label under the tail. Tiny shoe button or glass eyes and what appears to be the original bill.

9500-10,500

Provenance: Waddell Collection



237

236. LI willet decoy ca 1900 in XOC. Beautifully carved heart shaped wing detail with a stringing hole in the tail. Bill has an old repair and a small chip from the lower side. Head dowel is popped due to age shrinkage. Head and neck are inset to the front of the body. Thin vertical neck check and two slivers missing from the neck joint. Red glass eyes. Small chip off end of bill.

4500-6500

237. Ruddy turnstone with carved wing outlines split tail and small bead eyes by "Greeny" Noyes, Essex, MA. In minty OP with a few surface rubs. Signed "Greeny Noyes" in ink above the stick hole.

4500-6500



238. **Massachusetts split-tail black-breasted plover.** Drop tail with nicely carved shoulders and wings. Eyes may be shoe buttons. Original paint with light gunning wear. Bill appears to be the original. Hit by shot on right side. 3500-4500
Provenance: Powell Collection

239. **Massachusetts split-tailed yellowlegs from the Hingham School.** Made of a dense wood. Hand whittled dowl through split tail for stringing. Bill is original. Original paint is lightly crazed with light gunning wear. Hit by shot, mostly on right side. Outstanding example from this prime waterfowling area. 4500-6500

240. **Lesser yellowlegs or oversized peep decoy so called "Nantucket rocking horse" or "banana bird".** Bill appears to be original but may possibly be a very old in-use replacement. Fine original paint with a scattering of small rubs and scratches. Overall very good condition. For a rigmate see page 22 in Fleckenstein's "Shore Bird Decoys". 4500-6500

240A. **Nantucket "Rocker" or "Banana" lesser yellowlegs decoy in mellow OP with painted eyes.** Rig mate to shorebird in prior lot. There are a few rubs on the body and flaking of paint on the bill. Tail has an old chip with t/u. Stick that was glued in has been removed and vestiges of glue remain around the hole. 4500-6500

241. **Beautifully carved and antiqued split tail black-bellied plover by Massachusetts master carver Marty Collins.** Carved raised wings and splined bill. Excellent original paint. Conjoined "MDC" in ink on bottom. 200-400
Provenance: Waddell Collection.

242. **Lot of two shorebird whistles.** One early tin concave spoon type with light rust on the "spoon". One early tin, double-cone type with a small dent at the tip of the mouth piece. Collector tag indicates that the double cone call was "made by Charles Thomas – Accord, Mass." 300-400
Provenance: Powell Collection



243. Cartridge puller and whistle combination for 12 gauge shells. Finish worn to brass. 350-400

244. Cannister type snipe call stamped Ludwig and Ludwig, Chicago on the top of the canister. Made with a cap that can be removed to add water to the canister. Complete with mouth tip cap. In XOC. 600-800

245. Small canister type Ada Model snipe whistle made of stainless steel. Excellent condition. Few rubs. 250-300

246. Lot of two snipe calls. A semi circular disc type with "Willard MFG CO, Melrose, MA" and small cylindrical whistle stamped "Japan" on the side. 300-400

247. Disk type stainless steel snipe call stamped "Ekdale Call" in XOC. 250-300

248. Small canister type snipe whistle made of chromed brass and stamped Ludwig. Good condition. With a few dents and some of the plating lifting. 200-300

248A. Unusual knife, corkscrew and cartridge puller combination. Small amount of corrosion on blades. Stamped "Teal Knife" on the side. 300-400

248B. Stem and bell type snipe whistle with a lanyard loop and an impressed star on the side of the stem. Good condition. 350-400

248C. Interesting cartridge puller with a snipe whistle attached. #12 on the puller. Excellent condition. 350-400

248D. Period tampion, 1860-1900, iron with original green felt covering. "410" stamped on the ring. Excellent condition. 200-250

248E. House wren by deceased Cape Cod carver, Peter Peltz. Upswept tail, dropped wings and head turned 90 degrees to the left. All original paint and condition. Signed on bottom "Peter Peltz - house wren". 550-600
Provenance: Howard Waddell Collection.

249. Very attractive open billed songbird on a turned bowl. Open bill and split, raised wings. Shows age and appears original in all respects. 200-400
Provenance: Howard Waddell Collection.

250. Half size hanging mount of a red-breasted merganser drake by noted CT carver Keith Mueller. Applied wings with nicely carved crest. Fine original paint. Mounted on a beautifully grained oval hardwood plaque. 300-500

251. Lot of 4 brass duck paperweights. One larger than the remaining three. 25-35

251A. California quail lithograph by A. A. Pope. Framed. In excellent original condition. 14" X 20". 200-400

251B. Lot of two framed prints. Bluebills, old squaws, and goldeneye, on a sandbar and pintails and teal on a sand bar. Sight size 7" X 10". 100-200



251C. Lot of three watercolors by Angela Manz. Average sight size 5" X 7". 100-200

251D. Lot of 3 prints drawn by Audubon and printed by J. T. Bowen, Philadelphia. Two are 6" X 9 1/2" and one is 5 1/2" by 9 3/4". 200-400

251E. Lot of 7 framed hunting photographs. Six depict an on site goose stand. Each set of 3 photos measures 7" X 28 1/2". The grouse hunter is 9 3/4" X 7 3/4" (no photo). Condition fair. 200-400

251F. Two Pointers Print, "Steady". Sight size 7 1/2" X 10". From original by F. McCaleb. 50-75

251G. Goldeneye Print. There's some foxing and a couple wrinkles. Sight size 16 1/2" X 20 1/2". 100-200

252. Early miniature brown creeper by A. E. Crowell (1862-1952), East Harwich, MA in XOC with minor imperfections. "Brown Creeper" on the bottom of the base. Provenance: Talbot collection 1500-2500

253. Early miniature white-throated sparrow by A. E. Crowell (1862-1952), East Harwich, MA in XOC with minor imperfections. (bill tip ding) "W. Throated Sparrow" in ink on the bottom of the base. Provenance: Talbot collection 1500-2500

254. Rare early miniature Maryland yellow-throat by A. E. Crowell, East Harwich, MA in XOC. "Maryland Yellow Tit" in ink on the bottom of the base. Provenance: Talbot collection 1500-2500

255. Rare early miniature rose breasted grosbeak by A. E. Crowell, East Harwich, MA in XOC. "Rose Breast Grosbeak" in ink on the bottom of the base. Provenance: Talbot collection 1500-2500

256. Early miniature flicker by A. E. Crowell (1862-1952), East Harwich, MA in XOC with minor imperfections. "Flicker" in ink on the bottom of the base. Provenance: Talbot collection 1500-2500

257. Early miniature cat bird by A. E. Crowell (1862-1952), East Harwich, MA in XOC with minor imperfections. "Cat Bird" in ink on bottom of the base. Provenance: Talbot collection 1500-2500



261-262-263



258-259-260



264-265-266



267-268(2)

263. Early miniature orchard oriole by A. E. Crowell (1862-1952), East Harwich, MA in XOC with minor imperfections. "Orchard Oriole" in ink on the bottom of the base. 1500-2500
Provenance: Talbot collection

258. Early miniature cardinal by A. E. Crowell (1862-1952), East Harwich, MA in XOC with minor imperfections. "Cardinal" in ink on the bottom of the base. 1500-2500
Provenance: Talbot collection

264. Life size short billed dowitcher by James Lapham in XOC. Raised wing tips. "Short Billed Dowitcher" and J. Lapham, Dennisport, Mass" in ink on bottom of base. 400-600
Provenance: French collection

259. Rare early miniature red headed woodpecker by A. E. Crowell, (1862-1952) East Harwich, MA in XOC. "Red Headed Wood-Pecker" on the bottom of the base. 1500-2500
Provenance: Talbot collection

265. Life size piping plover by James Lapham in XOC. Raised wing tips. "Piping Plover" and "J. Lapham, Dennisport, Mass" in ink on the bottom of the base. 400-600

260. Early miniature thrasher by A. E. Crowell (1862-1952), East Harwich, MA in XOC with minor imperfections. "Thrasher" in ink on bottom of the base. 1500-2500
Provenance: Talbot collection

266. Miniature reaching American merganser drake by James Lapham in XOC. Split wing and tail detail. "American Merganser" and "James Lapham, Dennisport, Mass" in ink on the bottom of the base. 400-600
Provenance: French collection

261. Early miniature song sparrow by A. E. Crowell (1862-1952), East Harwich, MA in XOC with minor imperfections. "Song Sparrow" in ink on the bottom. 1500-2500
Provenance: Talbot collection

267. Miniature reaching Steller's eider hen with split tail in XOC. Signed "Steller's Eider Hen, James Lapham, Dennisport, Mass" in ink on the bottom of the base. 400-600

262. Early miniature goldfinch by A. E. Crowell (1862-1952), East Harwich, MA in XOC with minor imperfections. "Gold Finch" in ink on the bottom of the base. 1500-2500
Provenance: Talbot collection

268. Pair of miniature hooded mergansers. The hooded merganser hen is carved with a split tail and it is in XOC. Signed "Hooded Merganser Hen, James Lapham, Dennisport, Mass" in ink on the bottom of the base. The hooded merganser drake is carved with a split tail and wing tip carving and it is in XOC. Signed "Hooded Merganser Drake, James Lapham, Dennisport, Mass" 1000-1400



269-270



271



272-273



274-275-276



277-278-279

269. Miniature ringed neck pheasant by Allston Burr in XOC. Stamped "Allston P. Burr, 67 Leavett St, Hingham, Mass." on the bottom of the cedar base. 200-300

270. Life size chickadee by Russ Burr, Hingham, MA, on a wall mount made from a slice of tree. Carved separated wings with feather detail. Bird is attached as looking into a knot hole in the mount. "Russ Burr" in red ink on the back of the mount. 400-600

271. Miniature gull with an open beak and tiny glass eyes by Wendell Gilley in XOC. "Herring Gull by W. H. Gilley" in pencil on the bottom of the base. 400-600

272. Miniature bluebill hen decoy model by Miles Hancock, Chincoteague, VA. In XOC with a few small rubs on the edge of the bill. Stamped twice "Miles Hancock, Chincoteague, VA on the bottom. 200-400

273. Miniature red-breasted merganser drake by Willy Ross, Chebeague Island, ME. In XOC. Approx 6" long. Painted wing lines and painted pupils, unsigned. Three hall-marks of a true Willie Ross mini. Doughty, whose work is similar, always signed his work, whereas Ross almost never signed his work. Doughty also outlined his wings with pencil. 300-500

274. Life size turned head chickadee by Peter Peltz, signed, Sandwich, MA. In XOC. Raised crossed wings. 400-600

275. Large driftwood base with two miniature terns by Peter Peltz. Unsigned. One is attached with a wire and has outstretched wings, and the other is sitting. Very attractive and unusual presentation. 400-600

276. Miniature woodcock on a cut wooden branch base with wire legs, thread toes (two missing) and pin head glass eyes. OP, Probably by Peltz. 150-250

277. Miniature blue-winged teal drake attributed to Byron Bruffee. Glass eyes, split wing detail. A circular wooden base similar to Crowell carvings. 200-400
Provenance: Joe French collection

278. Miniature preening pintail drake in XOC attributed to Byron Bruffee. Painted eyes, split wings, and a circular wooden base similar to Crowell carvings. 200-400
Provenance: Joe French collection

279. Life size ring neck plover with split wing carving by Jerome Howes, Putney, VT. "Plover, Ring Neck J. Howes, Dec 1974" in ink on the bottom of the base. 200-400
Provenance: Joe French collection

280-281-282



James Lapham

283-284-285



286-287-288



280. Early Lapham oldsquaw drake on driftwood. In excellent original condition with a minor tail restoration.

400-600

281. Life size least sandpiper by James Lapham in XOC. Raised wing tips. "Least Sandpiper" and "James Lapham, Dennisport, Mass" in ink on the bottom of the base.

400-600

282. Miniature yellowlegs on a driftwood stick base by James Lapham in XOC. "Yellowlegs Sept. 24, '60" and "J. Lapham, Dennisport, Mass" in ink on the bottom of the base.

400-600

283. Miniature blue-winged teal drake by James Lapham in XOC. Carved raised wing tips. "Blue Wing Teal Drake" and "James Lapham, Dennisport, Mass" in ink on the bottom of the base.

400-600

284. Miniature green winged teal hen by James Lapham in XOC. Carved raised wing tips and a slightly turned head. "Green Wing Teal" and "James Lapham, Dennisport, Mass" in ink on the bottom of the base.

400-600

285. Miniature reaching red breasted merganser drake by James Lapham in XOC. Carved wing and tail detail. "Red Breasted Merganser" and "James Lapham, Dennisport, Mass" in ink on the bottom of the base.

400-600

286. Life size white crowned sparrow by James Lapham in XOC. Raised wing tips. "White Crowned Sparrow" and "James Lapham, Dennisport, Mass" in ink on the bottom of the base.

400-600

289-290-291



287. Life size chickadee by James Lapham in XOC. Raised wing tips. "Chickadee" and "James Lapham, Dennisport, Mass" in ink on the bottom of the base.

400-600

288. Miniature black duck with a tiny band on the leg possibly in good condition. Surface has indented feathers and carved crossed wing tips. Driftwood base is painted to resemble water on one edge.

50-100

289. Life size robin by James Lapham in XOC. Carved wing tips with dropped wing tips. Unusual flute carved base. "ROBIN" and "James Lapham, Dennisport, Mass" in ink on the bottom of the base.

400-600

290. Life size chickadee by James Lapham in XOC. Raised crossed wing tips. "Chickadee" and "James Lapham, Dennisport, Mass" in ink on the bottom of the base.

400-600

291. Ruffed grouse by James Lapham in XOC. Carved fan tail with dropped wings. "Roughed Grouse Male" and "James Lapham, Dennisport, Mass" in ink on the bottom of the base.

400-600



292



292A



292A



293(3)



293(3)



294



295

295A-295B-295C



295D(2)-295E



292. **Carving of a red-winged blackbird.** Carved wings with dropped wingtips. Tack eyes. Crazed, crackled and distressed paint. Wire legs and mounted on a driftwood knot. Possibly early Crowell that has been near an open fireplace or stove. 100-200

292A. **Lot of two miniature decoy models.** A Canada goose unsigned but probably by one of the Daisey Family, Chincoteague, VA and a shoveler hen signed "Herb Daisey, Jr, Chincoteague, VA, Shoveler Hen" in ink on the bottom. Both in XOC. 100-200

293. **Lot of three items.** Pair of miniature mallards with glass eyes and carved wing detail. Both have felt on the bottom with "M. Knott" scraped into the felt. In XOC. Miniature mallard hen (unsigned) with carved wing tips and nice paint. Clean check in the bill and a tiny amount of filler missing at the neck seam. Probably by the Daisey Family, Chincoteague, VA. 150-250

294. **One half size merganser decoy model by C.E. Doughty of Chebeague Island, Maine.** Good original paint with a little sap bleed-through on the head and some light staining on the white areas. Mr. Doughty carved these birds using Willy Ross patterns and materials after Ross's death. He may have helped produce a few of the birds with Ross while he was still alive. Confusion exist because a variety of handwriting and signatures of "Ross" and "Doughty" appear on these birds. It is generally felt that Ross did not sign the birds produced solely by him and the paint was slightly different. 300-500

295. **Pair of miniature wall mount flying bluebills by John Lee Baldwin (1868-1938)** "The Greatest Whittler of All Time", Babylon, LI, NY in OP with a few tiny minor surface rubs. When made these small flyers sold for \$2.50 each. 300-450

295A. **Merganser mini in the style of Benjamin Smith by the late Herbert Hancock of Tisbury, MA.** Martha's Vineyard. In XOC. 150-250

295B. **Pintail decoy by Herbert Hancock with a professional tail tip restoration by Frank Adamo.** 150-250

295C. **Canada goose mini by Herbert Hancock.** Chip off tip of bill. 75-100

295D. **Mallard decoy mini from Cape Cod.** Unknown maker. White-winged scoter mini possibly by Charles Hart. 200-400

295E. **Puffin mini from Canada with the head sharply turned left.** In XOC. 100-150

296



297(PR)



297(PR)



296. **Very rare Dodge Factory Canada goose ca late 1800's.** Outstanding original paint which exhibits very little wear for a bird of this age. Some neck filler and paint loss in this area. Knot visible on left wing/shoulder and another knot appears to run from the breast to under the tail with some minor paint loss in these areas as well. Tip of bill slightly blunted and a few dents or original nail heads visible at base of neck. "A.P & S.W.S." hot brand on bottom. Fresh from the original rig. This was the first one out and sold at a Bourne sale in the 70's.

12,000-14,000

297. **Pair of Mason, premier grade, mallards.** Both are in original paint with varying degrees of wear. Hen has strong original swirling visible in paint with generally light wear. Some flyspeck on back and mildew on breast. Filler missing on left neck and left eye missing. Extremely slight separation at body seam with a tiny hairline check on left side. Small knots visible on right side. Drake has some swirling visible in original paint that exhibits moderate wear with rubs to wood, especially on left side. Hit by shot on left as well as some dry rot on lower left edge. Tight check in back and typical small chip in top of tail. Both have small "Mello" collection brand. In as found condition.

2500-4500



298. Dodge factory mallard drake. Large areas of original paint in combination with some restoration. Neck filler and crack in back filled and repainted. Eyes appear to be replacements. Overall, a nice example. 800-1200
Provenance: Swain Collection

299. Mason challenge grade blue-winged teal drake. In nicely restored condition in the manner of the Mason factory. 800-1200
Provenance: Swain Collection

300. Mason, standard grade, painted eye whistler drake. Some original paint on back. White areas have received a wash and eyes and some of head have been repainted. Inlet weight. Surface has been waxed. 200-300
Provenance: Swain Collection

301. Mason standard grade, painted eye mallard drake. Neck filler replaced. In a combination of original and touched up paint. Restoration by Harvey Pitt. Two tiny, tight checks on left side of head. 200-300
Provenance: Swain Collection

302. Mason, standard grade, painted eye mallard drake. In mostly original paint with neck filler replaced and a crack in the bottom filled. Original knot visible at base of bill. 300-500
Provenance: Swain Collection

303. Outstanding Mason standard grade glass eye mallard hen. In excellent original condition in all respects. May have a thin coat of finish feeder on the surface. 500-1000
Provenance: Swain Collection

304. Mason, standard grade glass eye mallard drake. In a combination of original and touch up. Neck filler replaced. Some dings to the paint on the back. Surface has been waxed or coated with a sealer. 400-600
Provenance: Swain Collection

305. Mason standard grade glass eye mallard hen. In mostly original paint with minor wear. Neck filler replaced and a crack in the bottom filled. 350-550
Provenance: Swain Collection

306. Mason challenge grade widgeon drake. In mostly restored paint. Old crack in neck slightly visible otherwise good structural condition. "J" or "A" "BRULTV" carved in bottom. 300-450
Provenance: Swain Collection

307. Near mint black duck by Ken Harris of Woodville, N.Y. ca 1960. Detailed scratch feathering and very nice paint detailing to the head. One tiny ding to top of bill. Excellent example which retains Harris white stencil on the bottom. 300-500
Provenance: Swain Collection

308. Oversized or magnum black duck by Decoys Unlimited of Erie, Pennsylvania. Subtle wing carving. Excellent original paint with very light wear and dings. 200-400
Provenance: Swain Collection

309. Tru Dux, (Chicago, Illinois) mallard drake. Moderate to heavy wear to mostly original paint. Some areas on the rear of the head have been strengthened. Restorations by Harvey Pitt. 150-250
Provenance: Swain Collection



310. Herter factory Canada goose of balsa construction. Neck seam visible and a few tiny chips to wood. Original paint with light wear. Small black rub under tail. Surface protected with a sealer.

250-350

Provenance: Swain Collection

311. Pair of Herter factory deep-bodied balsa mallards. Both are in original condition and paint with light gunning or shelf wear. Hen has some small areas chipped or rubbed to wood on left side as well as some tiny bubbles in the sealer coat which has been applied to both birds. Both have had keels applied.

300-500

Provenance: Swain Collection

312. Low-head black duck by Ken Harris, Woodville, N.Y. Original paint with scratch feathering on back. A few small dents and rubs from use. Very light spattering of white dots (ceiling paint?) in back and head. Retains the small white painted Ken Harris stencil.

250-450

Provenance: Swain Collection

313. Bluebill drake by Ken Harris, Woodville, N.Y. Original paint with deep combing on back. White areas may have received a light wash. Some small rubs to wood or primer. Retains large, white, painted Ken Harris stencil.

200-400

Provenance: Swain Collection

314. Pair of plastic Flap-O Matic mallards by the Flap-O-Matic factory, Chicago, Ill. Tip of plastic right wing is missing on hen (approx $\frac{3}{4}$ " X $\frac{1}{2}$ ") but the rest of the decoy appears to be in excellent condition. The drake appears to be in overall excellent condition.

200-400

Provenance: Swain Collection

315. Bluebill set of "V-board" or "Illinois River Folding Wooden Duck Decoys" by the J. W. Reynolds Decoy Co., of Chicago and Forest Park, Ill. (see page 325 in Trayer). Two drakes and one hen on a three way, spring-loaded, folding platform. In excellent condition with only a few small scratches or dings to the original paint. Retains the bright "J. W. Reynolds Pattentee – Chicago U.S.A." stencil.

300-500

Provenance: Swain Collection

316. Carry-Lite Decoy Co., Milwaukee, WI. Boxed set comprised of one owl and two paper mache crows. Decoys are in excellent condition with no dents and only small rubs to high spots such as bill tips etc. Original box/carrying case is in very good condition with minor darkening and some light roughage to the corners.

250-350

Provenance: Swain Collection

317. One dozen folding waxed fiberboard field geese by the Wm. R. Johnson Co. of Seattle, Washington. All are in very good to excellent condition with their original metal stakes. The set is in the original canvas carrying case with the company information printed on it.

200-400

Provenance: Swain Collection

318. Herter factory eider drake. May be their "1893" model. Gouged feather finish. Original paint with very light rubs to high points on textured surface.

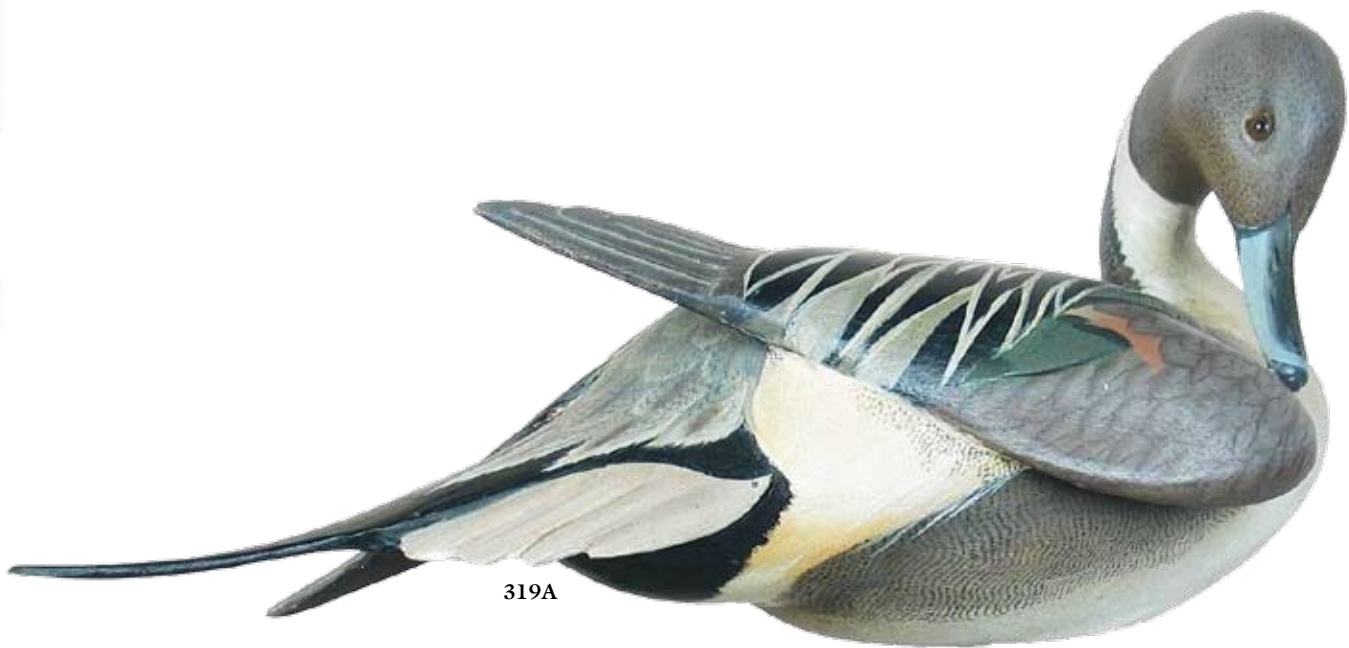
200-400

Provenance: Swain Collection

319. Padco Co., Pascagoula, Mississippi, pintail drake (see page 283 in Trayer). Original in all respects with only very light shelf wear. Surface has received a light coat of sealer. Never rigged.

200-400

Provenance: Swain Collection



319A



320(PR)



320(PR)

319A. Preening pintail drake by the Ward Brothers, Crisfield, MD in XOC. Exceptional carving with both wings lifted, head lifted and turned to the right side preening the edge of the wing. Beautifully painted. Certainly the finest example to surface in many years. Bottom reads "L.T. Ward, Jr, Crisfield, MD 1968" and below "Made for Ed German's Collection by Lem Ward 1968".

18,000-24,000

320. Bluebill drake and hen by the Ward brothers. Drake's head is turned sharply to the right and delicately carved delineation to the wing tips. Superb original paint and condition. Signed on bottom under typical heavy coat of sealer. "Ward Bros. - Crisfield, Md. - Lem Ward - Steve Ward - 1942". The hen's head is turned sharply to the left. Superb original paint and condition. Signed on bottom under typical heavy coat of sealer. "Ward Bros. - Crisfield, Md. - Lem Ward - Steve Ward - 1942".

6500-9500



321



The Ward Brothers

322(PR)



323



324



325



326



321. **Canvasback drake by the Ward brothers.** Balsa with head turned to the right. Original paint shows overall light wear with a few small areas of chips or dents to wood (less than 1/4"). Surface has been covered with a coat of sealer. Keel has been removed. Bottom in marker reads "Ward Bros - Crisfield Md" with the signature "Lem & Steve - 1948" 2500-4500
Provenance: Swain Collection

322. **Pair of Ward Brothers 1/3 size pintails with turned heads.** Bottom of drake reads "Sprig tail drake". Bottom of hen reads "Pintail hen". Both have "Ward Bros-Crisfield, MD-1963" on bottom. Drake has a lower neck check. 500-800

323. **Pintail drake done in the style of the Ward brothers.** Two piece construction and possibly hollow with a deep ice groove and upswept tail. Old original paint with rubs to wood along edge of tail and high spots. Some paint loss around eyes. Numerous notations on bottom stating "Ward Bros", and "Lem and Steve", etc. 3000-4500

324. **Bluebill drake from Crisfield, Maryland.** Good original paint with combed vermiculation on back shows light overall wear with a few small rubs to wood, especially on head. White stain or drip on left cheek. Thin end grain check runs across back and there is an area of dry rot or grain separation on lower and middle right side. 400-600

325. **Delaware river black duck with a textured or flocked feather finish.** Nicely carved head with a repair to back of neck. Paint appears to be original with some possible gunning touchup. One orange and one white paint mark on body. Acquired as a Christmas present in 1965. 200-400
Provenance: Waddell Collection.

326. **Large decorative swan.** Nicely antiqued paint to represent a Chesapeake gunning decoy. Nice piece of sculpture with a commanding presence. 400-600

327(PR)



327. **Pair of cedar or pine, 1936 model canvasbacks by the Ward brothers.** Drake has head turned approx. 30 degrees to the left with a thin hairline crack in the neck. Scattering of tiny rubs or scratches on the dark areas to light undercoat. Hen has head turned approx. 30 degrees to the right with a partial thin, tight crack in the neck. A few tiny rubs or scratches to darker colors exposing lighter undercoat. Both have notations on the bottom that they were repainted by Lem. Both are signed by Lem and Steve and both have a poem by Lem.
2000-4000

328. **Quarter size Canada goose by C Bowman and so signed on the bottom.** Head turned left, carved raised wingtips, detailed feather carving. Original paint. 300-500

329. **Contemporary carving of a Carolina ruddy duck in the manner of John Williams.** Antiqued with chips and rubs. 300-500

330. **Bluebill swimmer by Harry Shourds in old paint.** Surface dings and chipped wood in places. Hollow carved. 250-450

331. **Bluebill drake by Ira Hudson ca 1900.** Painted eyes, original paint, couple tight body checks. Professional bill repair. 300-500

332. **Rugged hollow carved New Jersey black duck.** Ice groove and two old repairs on back. Well worn original paint and pad weight. 150-250
Provenance: Swain Collection

333. **Black duck decoy from NJ. Possibly by Harry Shourds.** Hollow carved. In excellent restored condition. 200-300

334. **Tiny charming oldsquaw drake ca late 1800's.** Ancient crazed paint is worn but mostly original with a few very old, small areas of gunning touch up. Some paint loss around old nail repair to neck and where the old original neck filler has cracked. Original, attached floatation board has a whittled "WC" in it. It has great form and appeal. 200-400
Provenance: Waddell Collection.

335. **Mallard drake by Madison Mitchell.** Original paint with moderate wear and areas of rubs to primer or wood. Tight checks in right side and bottom. Surface has been coated with a sealer. Signed in electric pencil on bottom "R. Madison Mitchell – Havre de Grace, Md. – 1952". 250-450
Provenance: Swain Collection

336. **Mallard drake from Havre de Grace.** Early gunning model with fairly large areas of the original paint worn to wood. Crack in neck has been glued and there is a nail repair to a knot on the bottom. Surface has received a heavy coat of sealer. 200-350
Provenance: Swain Collection

337. **Canvasback hen by Madison Mitchell.** Thin tight partial check in bottom. All original paint with very minimal shelf wear on bottom only. Never rigged. 200-400



338(PR)

339

338. Wonderful and near perfect example of a pair of unrigged Mason challenge grade whistlers. Snaky head style. These are the exact decoys pictured on the top of page 65 in the definitive Goldberger and Haid reference. Decoys have never been rigged and retain all the original neck filler. No checks or cracks. Excellent, strongly swirled, original paint with tiny rubs to primer in the black areas. Narrow check in bottom of hen. Couple minor stains on surface. Acquired by Mr. Waddell in 1974.

15,000-18,000

Provenance: Waddell Collection

339. Rare Mason standard grade glass eye white winged scoter drake ca 1905. Very rare "bump in the bill" model with the correct white glass eyes. This is the exact decoy pictured in the middle of page 89 in the definitive Goldberger and Haid reference. Original neck filler which is cracked and some missing. Tight checks on both sides of body and left side of head. Fine original paint show light overall wear with a scattering of tiny rubs to high points on the surface. Minor rubs to wood on edge of tail. Scoters are an unusual and rare species for Mason.

5500-7500

Provenance: Waddell Collection.



340



341



342

341. Mason split tail tack eye dowitcher with wooden bill ca 1900. Slightly thinner and smaller than average. This is the exact bird pictured on page 109 in the authoritative Goldberger and Haid reference. All original paint with some light rubs and darkening on bottom and breast from age and use. Evidence of some old dry drips of some liquid on bottom of bird. Original wooden bill with some wear. 4500-5500
Provenance: Waddell Collection.

342. Mason glass eye mourning dove with metal bill ca 1905. This is the exact bird pictured prominently on page 112 in the authoritative Goldberger and Haid reference. In perfect structural condition except for two or three miniscule nicks to the right tail edge. Wonderfully strong original paint with the original brush strokes plainly evident. One would search long and hard to find a better example of this species by Mason. 5500-7500
Provenance: Waddell Collection.

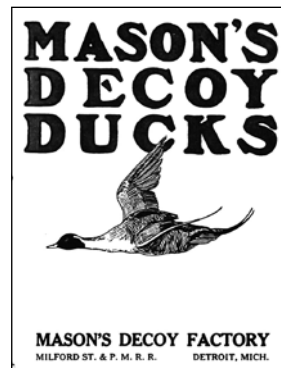
340. Mason tack eye golden plover in fall plumage with metal bill. This is the exact bird pictured on page 101 in the authoritative Goldberger and Haid reference, "Mason Decoys, A Complete Pictorial Guide". Wonderful original paint with little wear. A few very tiny dents in back and one small shot mark to left rear of head. Acquired by Mr. Waddell in 1978.

6500-8500

Provenance: Howard Waddell Collection, X Bud Ward collection



343



344



345



346



347

343. Mason premier grade black duck in excellent original paint with minimal wear. This outstanding decoy is in out of rig condition with a few minor rubs and imperfections. An original tail chip has been reset by the hunter/owner who also made a few whittle marks on the top of the tail which have darkened with age. 2500-3500

344. Early, Mason, "snaky head", challenge grade black duck. Good, lightly worn, original paint with feather detailing and swirling visible. Original hunter/user tail chip re-set and a small amount of neck filler replaced by Paul Fortin. A couple of small body dings darkened. Old tight check runs from breast to tail. Retains remnants of two old stencils on bottom, "Challenge" and "U.S. Patent Office". 2500-4500

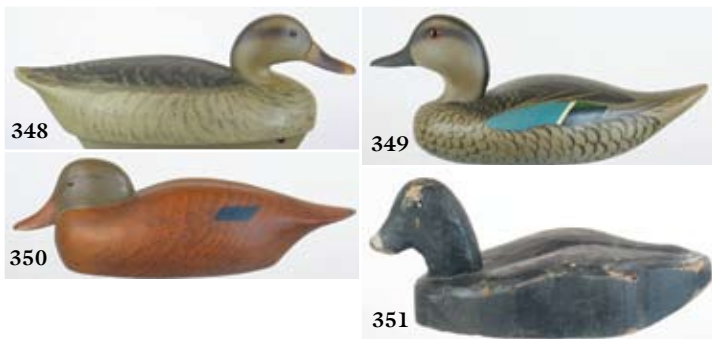
345. Challenge grade redhead drake by the Mason Decoy Factory. In fine original paint with typical Mason swirled paint. Moderate wear with rubs to primer or wood. Head a little loose with a small crack in the front of neck. In as found in rig condition. 2000-3000

346. Mason, challenge grade bluebill hen. Old crack at base of neck has been glued and an old nail repair is visible in this area. Thin, partial check on bottom of decoy. Old factory check slightly visible on back. All original paint with some loss at base of neck with some areas worn or rubbed to wood on head. Body shows overall light wear with some rubs to wood along grain lines on left side. There is an illegible stencil rig mark on bottom. 2000-3000

Provenance: Waddell Collection.

347. Mason standard grade, glass eye, bluebill drake. Checks in back and sides with a shallow 3" sliver of wood missing from one on the left wing area. Neck filler missing and head has been glued tight to the seat. Lightly hit by shot on right side. Moderate gunning wear to original paint under a thick coat of sealer. "BWC" stamped into weight and on an old brass tag under tail. 350-450

Provenance: Waddell Collection.



348. Balsa mallard hen by Wildfowler. All original paint which is in wonderful condition. Small thin drip of a glue like substance on right lower neck seam. Shallow, thin 2" dent on left shoulder and a scattering of tiny holes on the bottom and left side. Original keel but no factory stamp. 200-400
Provenance: Waddell Collection.

349. Blue-winged teal hen by Wildfowler. Possibly carved and painted by Harry Ross senior (see page 51 in Cowan and LaFountain). Excellent structural condition. Fine original paint with a small area of old repair around the left eye which is only apparent under a black light. Signed on bottom "blue winged teal female – Ross". 200-400
Provenance: Howard Waddell Collection

350. Half size, tucked head, mallard hen by "A-Z Crafts" and so stamped on bottom. Natural wood finish with painted head and wing detail. All original. Stamped on bottom "Ornamental Wildfowl Decoys" and signed "Mallard hen – By Wes Gordeuk" 75-125
Provenance: Howard Waddell Collection.

351. Chip carved, tack eye, fresh water coot with primitive appeal. Delineated wings with carved tail and wing edges. Two piece vertically laminated head. Original paint with light to moderate gunning wear. 90-110
Provenance: Howard Waddell Collection.

351A. Three ring binder "History of the Massachusetts Waterfowl Stamps and Prints". Published in 1981 by C.G Rice under the auspices of the Peabody Museum. Covers the stamps through 1982. Excellent, original condition. 75-125

352. Lot of 4 decoy references. Decoys of the Shelburne Museum, soft Cover; Wildfowl Decoys by Barber, soft cover; Lot of 4 postcards and clippings dealing with the Ward Bros. (one signed by Lem 69); Shang by Merkt, HB with DJ. All good condition. 100-200

353. Lot of 4 decoy reference books. American Bird Decoys by Mackey. HB with no DJ. ; Wildfowl decoys by Barber soft cover; Floating Sculpture by Huster and Knight, HB with DJ.; Decoys by Harrell, HB with DJ. All in good condition. 100-200

354. Lot of 16 assorted decoy auction catalogs from the Richard Bourne Co. Assorted dates from the 70's and 80's. Good condition. 75-125

355. Lot of 19 decoy auction catalogs from the Richard Bourne Co. Assorted dates from 1973 – 1987. Good condition. 75-125

356. Lot of 19 assorted auction catalogs from the Richard A. Bourne Co and the Robert C. Eldred Co. Nine deal with decoy auctions and the remainder are general auction. Overall good condition. 75-125

357. Lot of 12 auction catalogs. From various auction houses. Dates range from the 70's to the early 2000's. Nine deal specifically with decoys. Good condition. 75-125

358. Lot of 7 back issues of Hunting and Fishing Collectibles Magazine. Assorted dates from Vols 5, 6 and 7. Good condition. 40-50

359. Slip Case copy of The Classic Decoy Series by Milton C. Weiler. Prints and inner folder are in fine condition. Slip case has slight foxing and fairly extensive waving to the paper cover from moisture. 250-450

360. Lot of 3 calendars by the Shelburne, Museum, Shelburne, Vt. 1990, 1991 and 1992. Mint condition in the original shrink wrap. 50-150

361. Lot of 3 paperback sporting collectable references. One session V and VI of the July 1974 Bourne decoy catalog. Cover missing and marked in ink "work copy". One copy of "One Man One Rod at the British Engineerium" in very good to excellent condition. One copy of Fleckensteins "Decoys of the Mid-Atlantic region" in excellent condition. 100-150

362. Lot of 3 spiral bound volumes of "Decoy Collectors Guide". 1966-67 Annual, 1968 Annual and Vol. 6, 1977. All appear to be in very good to excellent condition. 75-125

363. Hardbound copy of "Waterfowl Heritage – North Carolina Decoys and Gunning Lore" by Wm Conoley. Overall very good to excellent condition with a few small rips to the dust jacket. Rare reference. 100-200

364. Hardbound copy of "Traditions in Wood – A History of Wildfowl Carvings in Canada" by Patricia Fleming. Overall excellent condition with no tears to dust jacket. Scarce reference. 50-75

365. Lot of 4 Faulk's Champion Calls along with the original display box. XOC made in the 40's or 50's. 100-200



365A



365F

365A. Preening blue-winged teal drake by Mike Frady (1912-1993), New Orleans. Head turned slightly to right and tucked on breast as if cleaning feathers. Carved, partially crossed and raised wings. All original paint with some moderate shelf wear and rubs. Dowel visible on top of head otherwise in excellent structural condition. Branded/stamped on bottom "Mike Frady", New Orleans. 1500-2500



365B

365B. Blue-winged teal swimmer in near mint original condition by Xavier Bourg (1901-1984) of Larose, LA. One of the finest we've seen. Relief carved wings with the typical serrated outer edges. 800-1200



365C

365C. Green-winged teal drake by Louisiana decoy maker Nedville Pank Martin. Folky round-bottom decoy with an impressed "M" in the bottom. The bottom has had an extra coat of waterproofing. This decoy features relief carved wings and deep eye groove carving. One eye is missing, the other is crazed. This rare Bayou classic is a charming little decoy that has been heavily gunned. 1500-2500



365D

365D. Swimming mallard drake by Mitchell LaFrance (1882-1979), New Orleans. In mostly original paint with some overall in use gunning touch up. Tack eyes, relief carved wings. Bow tie shaped balance weight. Structurally sound. 1500-2500



365E

365E. Classic Louisiana mallard drake with raised wing tips by Ed Granier (1900-1943), Vacherie, LA. Filler with T/U replaces a couple lost tail chips. Excellent overall condition otherwise with moderate wear. 1500-2500

365F. Bluebill drake decoy with glass eyes by Arthur Pellegrin of Houma, LA. Conjoined AP signature on the bottom. 100-200



365G



365H



365I

365G. Ringbill drake by Reme Ange Roussel Jr. (1903-1972) with raised wingtips. In good structural condition. Fitted with Glasseyes. In very good gunning condition with some overall in use repaint. 300-450

365H. Folky mallard drake by LA maker Dominic Quatroty ca early 1900's. Probably made of Cypress root. There is natural wood flaw in the upper left side of the body which can be seen in the photo. In fine original paint with in use minor imperfections. There is an exhibition sticker on the bottom that reads: "Jacksonville Museum of Arts and Sciences-Wildfowl Decoys Floating Sculpture 3-19-83- 6-30-83."

1500-2500

365I. Very fine mallard hen by Mark McCool Whipple (1884-1961), OF Houma, LA. In excellent original condition with a few shallow minor dings. Glass eyes. Weights removed and there are a couple of minor pry marks on the bottom. There is a 1 1/2 " dent in the left wing flash. Couple of minor splashes of paint on the body. Probably done when painting the decoy rig. An excellent decoy for the serious collector. 2500-4500

