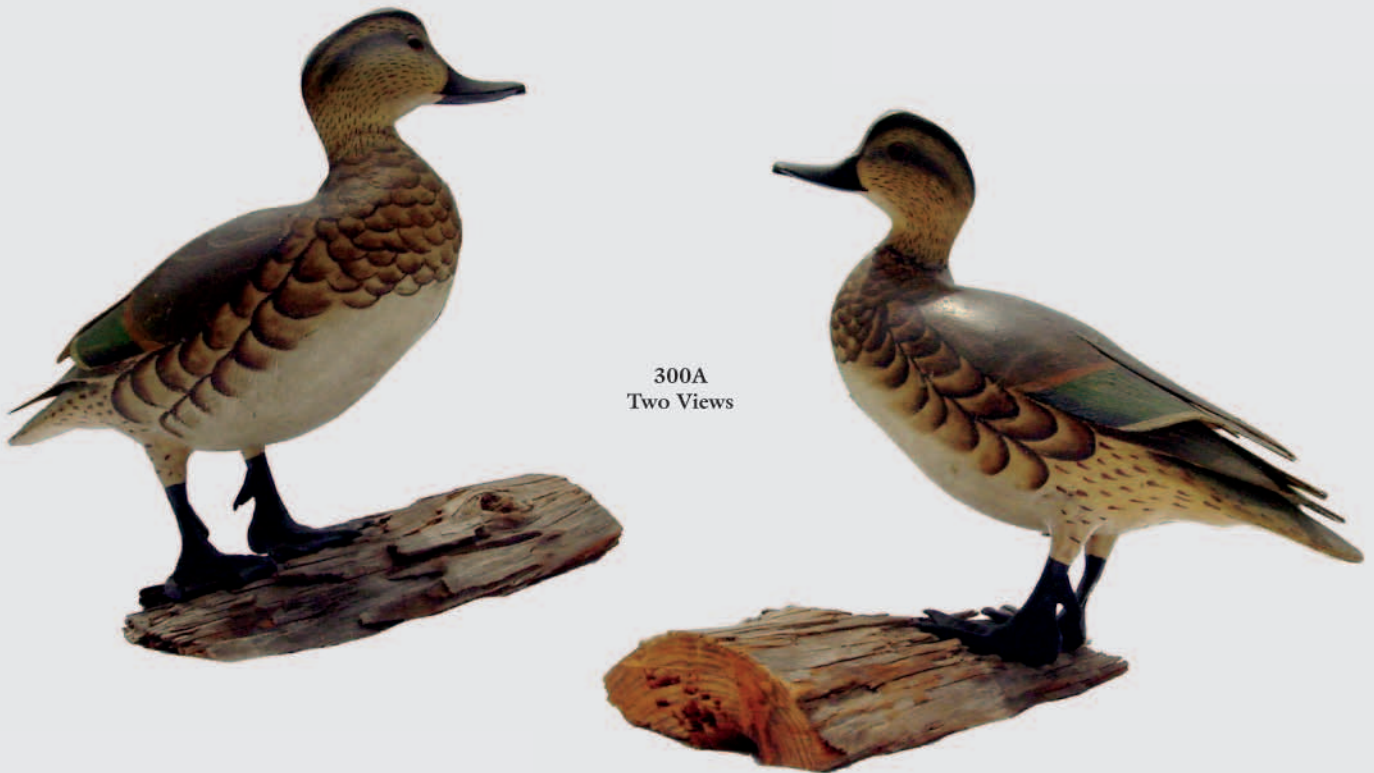


Decoys Unlimited, Inc. Theodore S. Harmon

DECOYS UNLIMITED, INC.

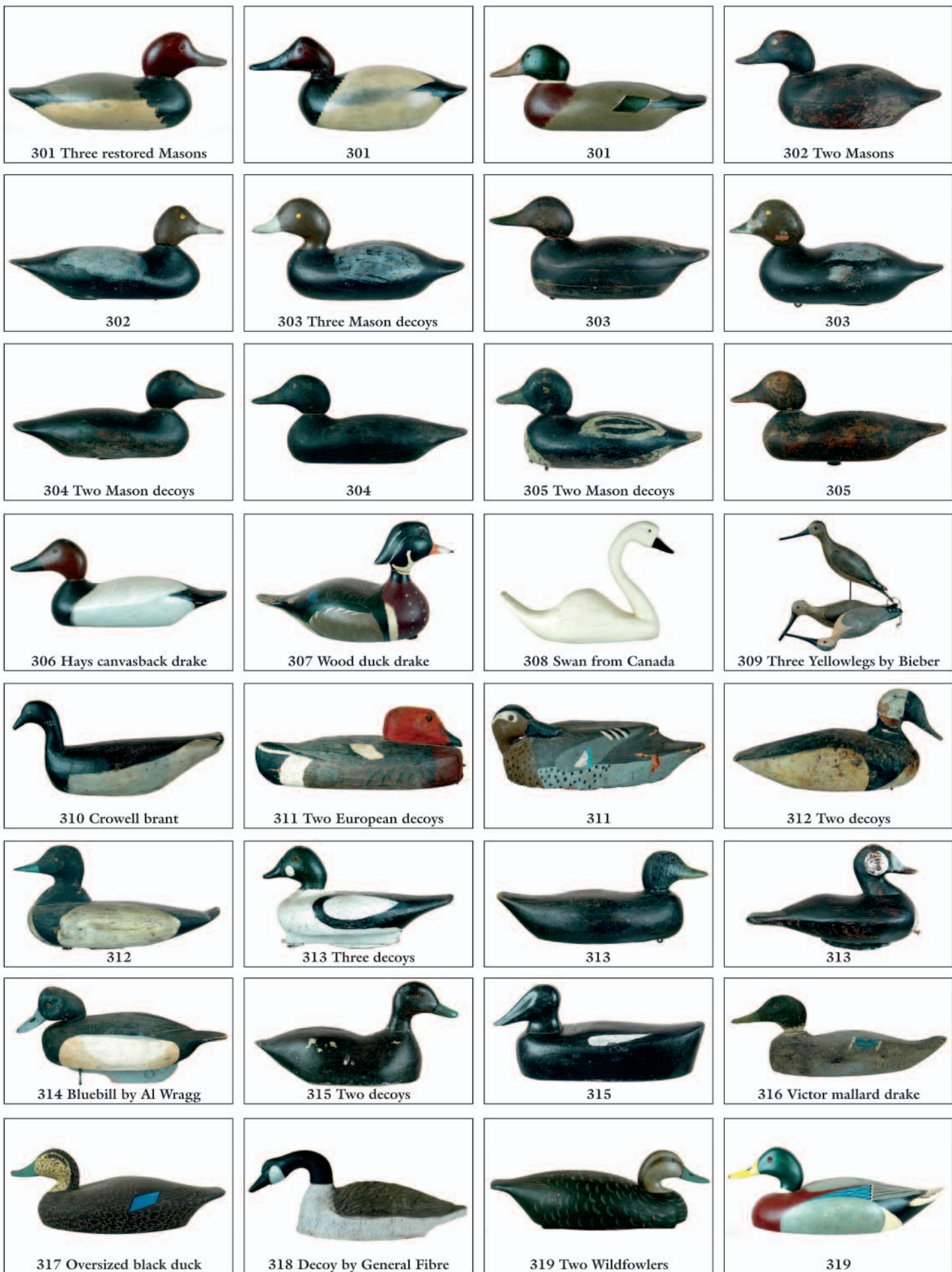
Monday Afternoon Sale

Monday, July 13, 2009 • 4pm



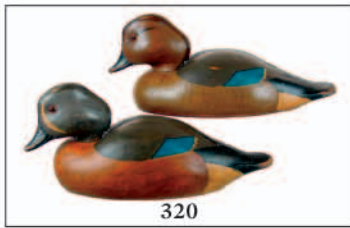
300A
Two Views

300A. Incredible sculpture of a life size standing green-winged teal hen by Lem and Steve Ward of Crisfield, Maryland. Acquired by the consigners grandfather, Dan Pasquella, from Lem Ward in exchange for a gallon of home brewed beer. According to family history this took place just before Prohibition was repealed in 1933. Mr. Pasquella was a friend of the Ward's as well as a hunting companion. The Wards leased their barbershop/workshop on Asbury Avenue from Mr. Pasquella, who resided across the street. One of the legs had a break which was restored and the bird was mounted on driftwood for stability. The multiple feather groups have been carved from shingles, artistically inserted, and carefully painted. These superb sculptures are in the cataloger's humble opinion, Lem and Steve at their very best. The bird measures 11 1/2" from bill to tail, and 13 1/2" in girth. 15,000-25,000

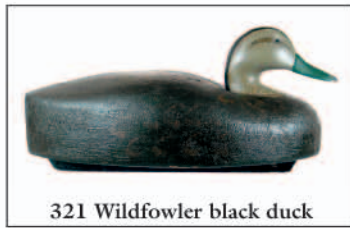




320 Two pairs of Wildfowlers



320



321 Wildfowler black duck



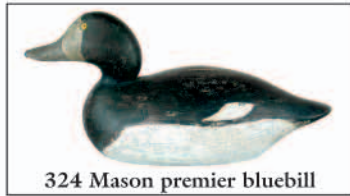
322 Wildfowler canvasback



323 Two decoys



323



324 Mason premier bluebill



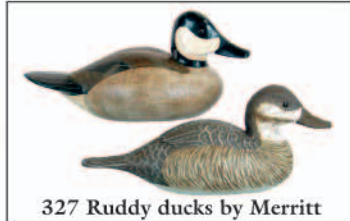
325 Two Connecticut decoys



325



326 Crow decoy



327 Ruddy ducks by Merritt



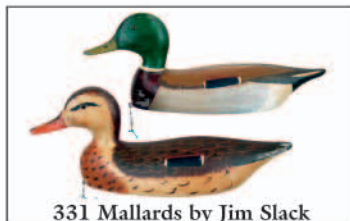
328 Vermont goldeneye



329 Bufflehead drake



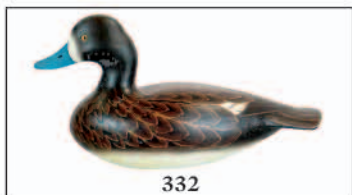
330 Folky eider drake



331 Mallards by Jim Slack



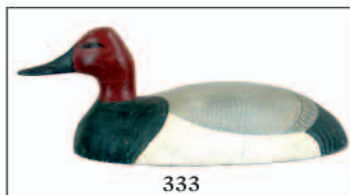
332 Two bluebills



332



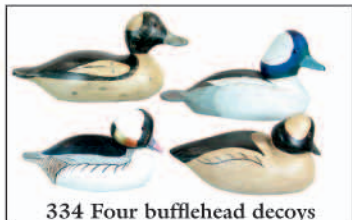
333 Three decoys



333



333



334 Four bufflehead decoys



335 Four Gibson Geese



336 Two Havre de Grace decoys



337 Two decoys



338 Three decoys



338



339 Merganser hen by Daisy



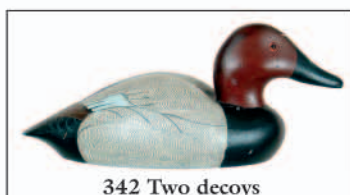
340 Three Quebec decoys



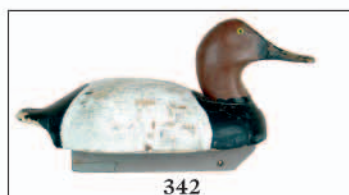
340



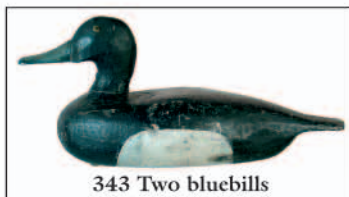
341 Canvasback from Michigan



342 Two decoys



342



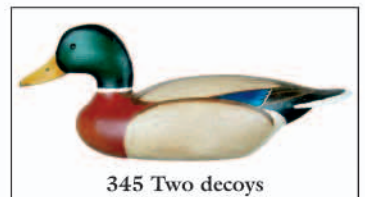
343 Two bluebills



343



344 Wildfowler black duck



345 Two decoys



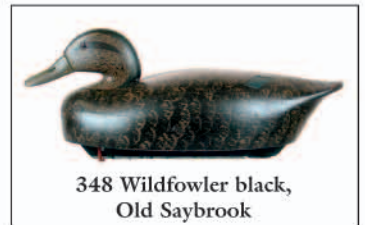
345



346 Pair of Wildfowler buffleheads



347 Wildfowler mallard



348 Wildfowler black, Old Saybrook



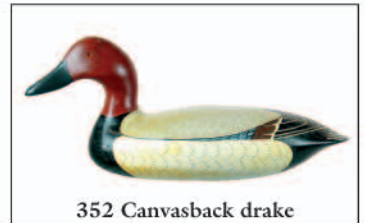
349 Two factory decoys



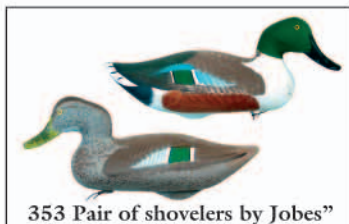
350 Seven bird carvings



351 Wildfowler green-winged teal



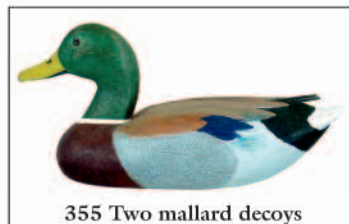
352 Canvasback drake



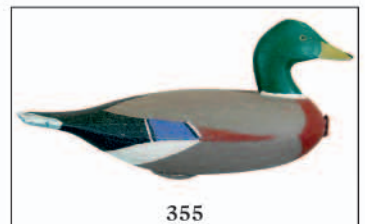
353 Pair of shovelers by Jobs"



354 Pair of Fennimore buffleheads



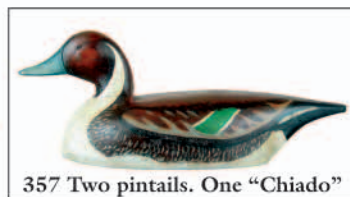
355 Two mallard decoys



355



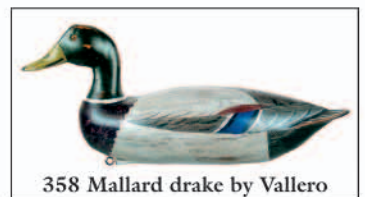
356 Four decoys



357 Two pintails. One "Chiado"



357



358 Mallard drake by Vallero



359 Petite goldeneye



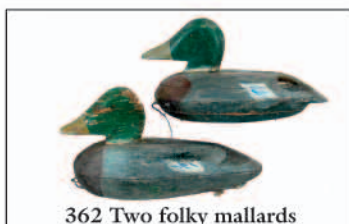
360 Rig of 7 bluebills. (RWH)



361 Two decoys



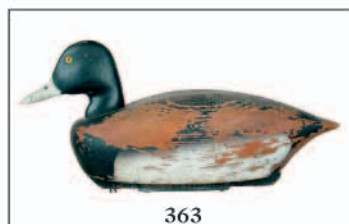
361



362 Two folkly mallards



363 Two factory decoys



363



364 Two decoys



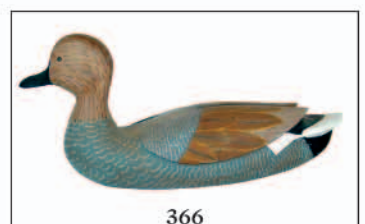
364



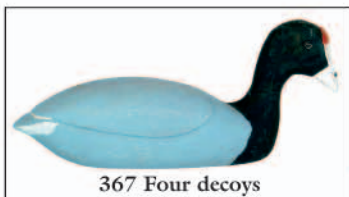
365 Mallards by Turner, Ontario



366 Two decoys, one Vinson



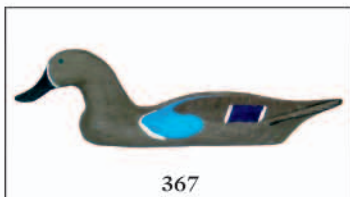
366



367 Four decoys



367



367



367



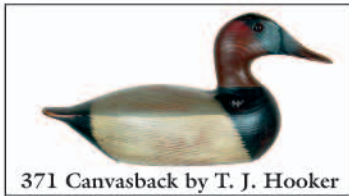
368 Two goldeneye drakes



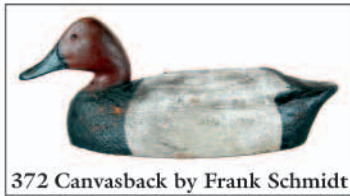
369 Two from WI



370 Mallard drake



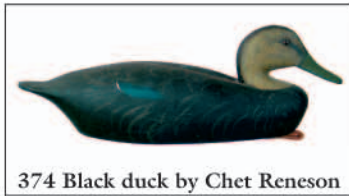
371 Canvasback by T. J. Hooker



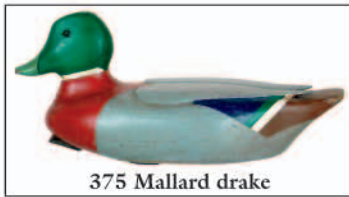
372 Canvasback by Frank Schmidt



373 Black duck, Paw Paw Bait



374 Black duck by Chet Reneson



375 Mallard drake



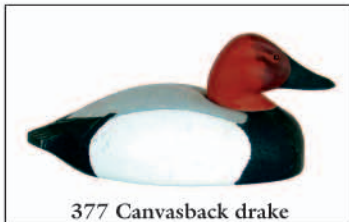
376 Three decoys



376



376



377 Canvasback drake



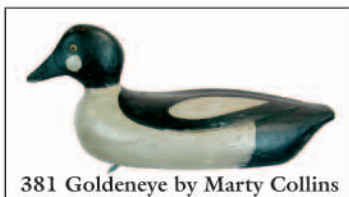
378 Mason challenge bluebill



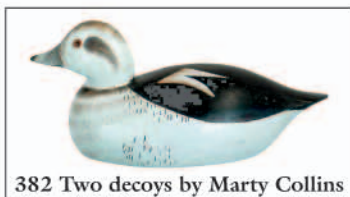
379 Pair of canvas decoys



380 Large hollow swan stamped "Dawn Sears"



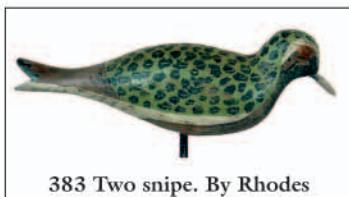
381 Goldeneye by Marty Collins



382 Two decoys by Marty Collins



382



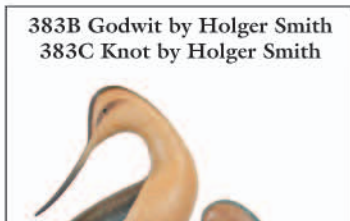
383 Two snipe. By Rhodes



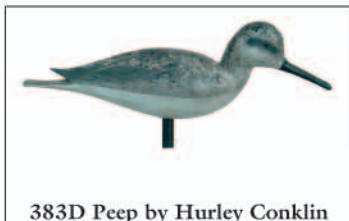
383



383A Widgeon by Legaux



383B Godwit by Holger Smith
383C Knot by Holger Smith



383D Peep by Hurley Conklin



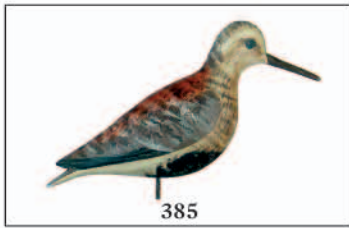
384 Two shorebirds



384



385 Two shorebirds



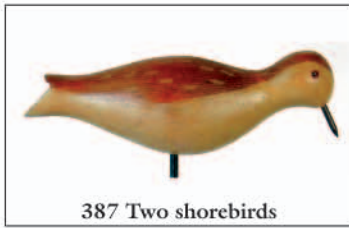
385



386 Two shorebirds



386



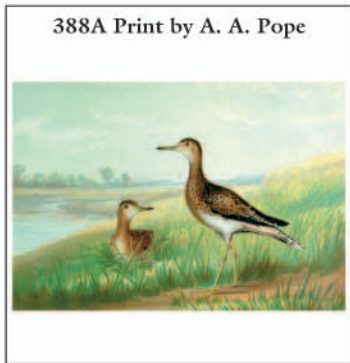
387 Two shorebirds



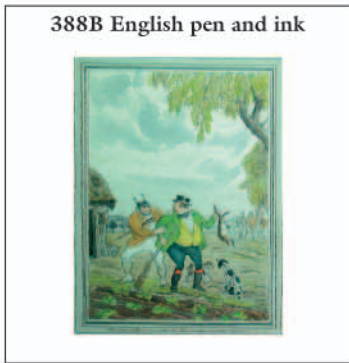
387



388 Five plovers



388A Print by A. A. Pope



388B English pen and ink



388C Three lithographs



388C



388C



388D



388D



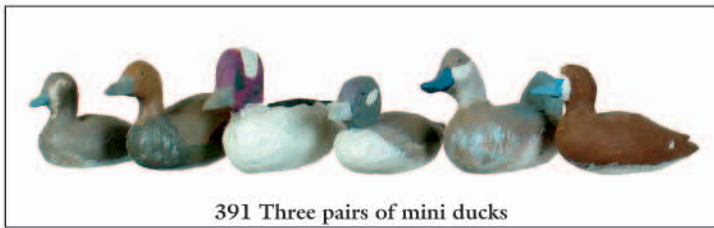
388E Poster "Ben Schmidt"



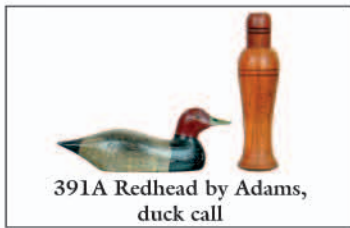
389 Three minis



390 1/3 size Canada Goose



391 Three pairs of mini ducks



391A Redhead by Adams, duck call



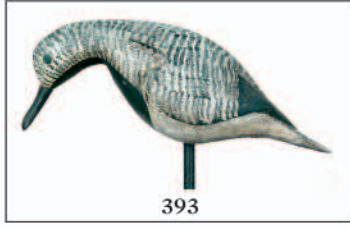
392 Two decoys



392



393 Two shorebirds by Kirkpatrick



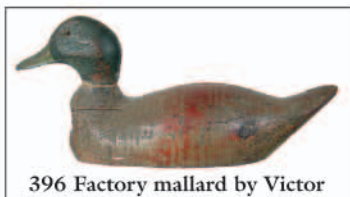
393



394 New England plover



395 Merganser hen, Nova Scotia



396 Factory mallard by Victor



397 Two decoys



397



398 Pair of geese from Canada



399 Seven decoys



400 Ten decoys



401 Six decoys



402 Five carvings



403 Four factory decoys



404 Six decoys



405 Five decoys



406 Six factory decoys, two molds



407 Ten hand carved decoys



408 Basket, Lagerman collection



408A Basket, Lagerman collection



409 Basket, Lagerman collection



410 Basket, Lagerman collection



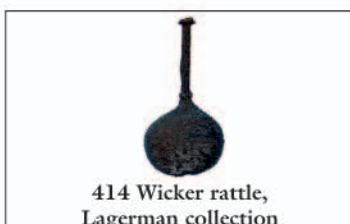
411 Blanket chest, Lagerman collection



412 Two baskets, Lagerman collection



413 Basket, Lagerman collection



414 Wicker rattle, Lagerman collection



415 Basket, Gonet collection



416 Basket, Lagerman collection



417 Basket, Lagerman collection



418 Basket, Lagerman collection



419 Basket, Lagerman collection



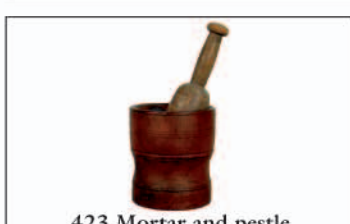
420 Basket, Lagerman collection



421 Basket, Lagerman collection



422 Basket, Lagerman collection



423 Mortar and pestle



424 Small cranberry scoop



425 Brass shotgun shells



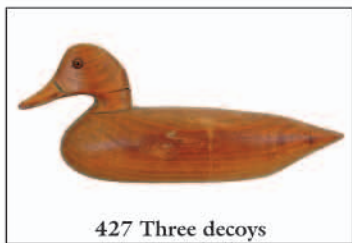
425A Eel Spear



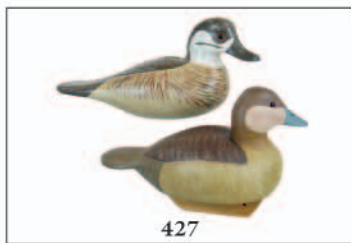
425B Fox Horn



426 Bluebill, "Clarence Miller"



427 Three decoys



427



428 Bluebill from Canada



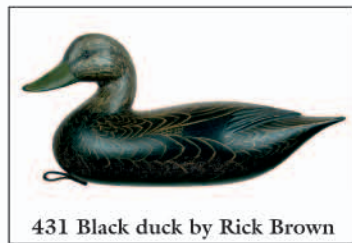
428A Pair of Martha's Vineyard bluebills



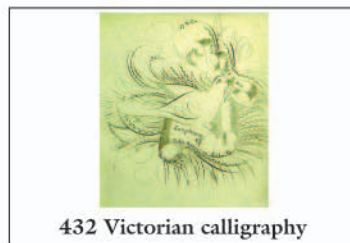
429 Merganser by Nickerson



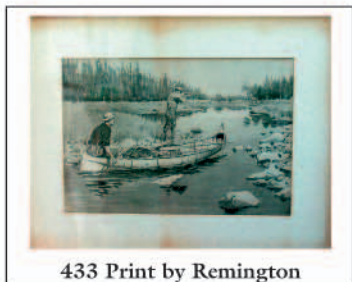
430 Scoter by Collins



431 Black duck by Rick Brown



432 Victorian calligraphy



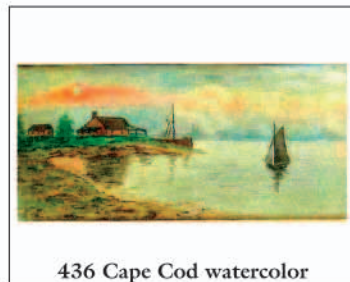
433 Print by Remington



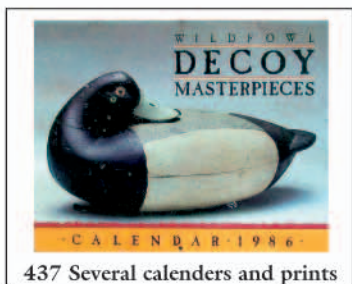
434 Print by Danchin



435 Vintage crewel needlework



436 Cape Cod watercolor



437 Several calendars and prints



437



438 Three prints



438



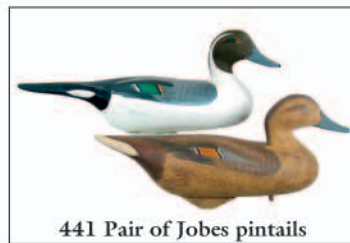
438



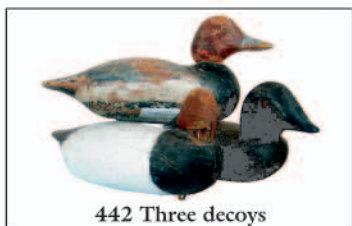
439 Print by Lynn Bogue Hunt



440 Bluebill hen by R. Mitchell



441 Pair of Jobs pintails



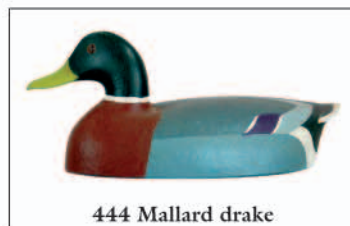
442 Three decoys



443 Two decoys



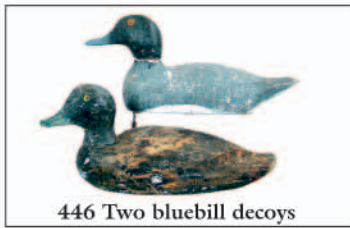
443



444 Mallard drake



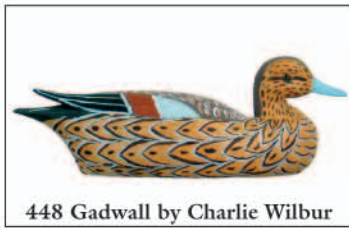
445 Pair of owl andirons



446 Two bluebill decoys



447 Dodge Factory widgeon



448 Gadwall by Charlie Wilbur



449 Two minis



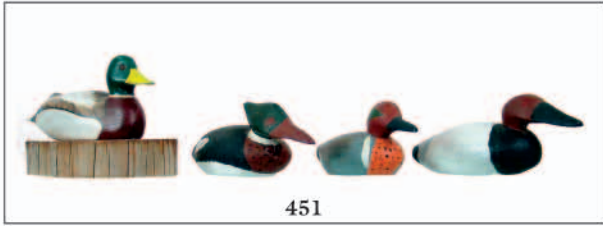
450 Pair of blue-winged teal



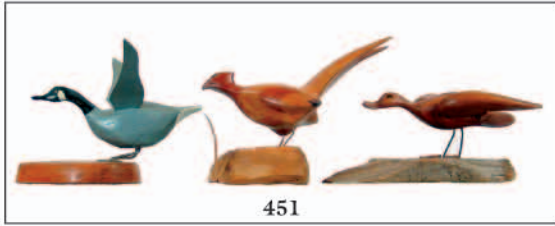
451 Twelve minis



451



451



451



452 Four mini carvings



453 Four mini carvings



454 Bobtail redhead



455 Michigan bob tail can



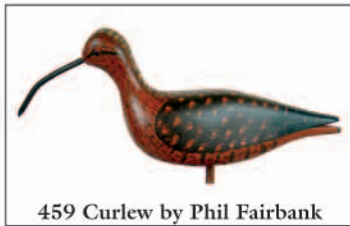
456 Pair of lapwings



457 Flattie yellowlegs



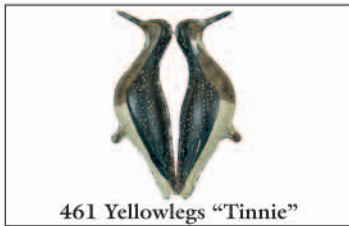
458 Running Curlew by Kirkpatrick



459 Curlew by Phil Fairbank



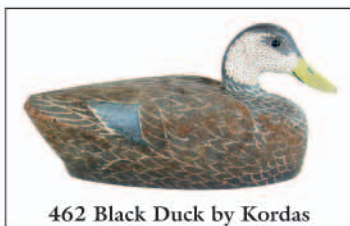
460 Two folding yellowlegs



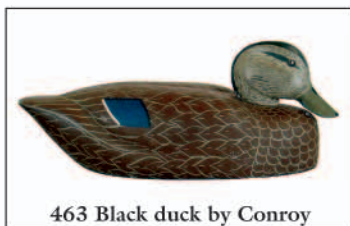
461 Yellowlegs "Tinnie"



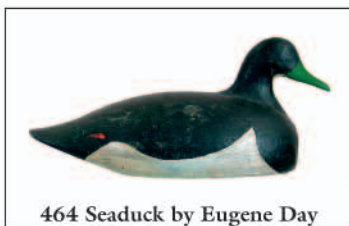
461A Madison Mitchell canvasback



462 Black Duck by Kordas



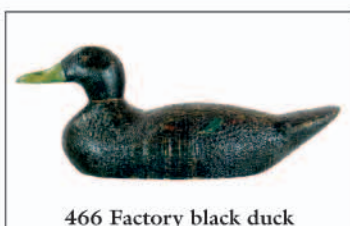
463 Black duck by Conroy



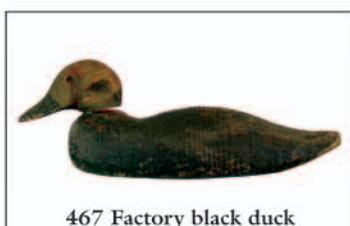
464 Seaduck by Eugene Day



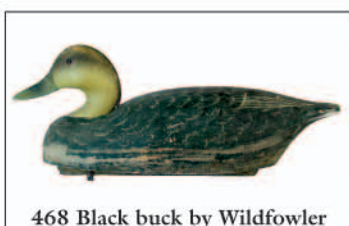
465 Mason Factory bluebill



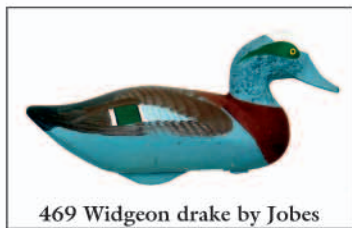
466 Factory black duck



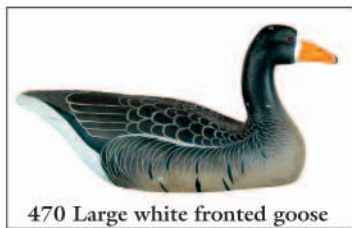
467 Factory black duck



468 Black buck by Wildfowler



469 Widgeon drake by Jobes



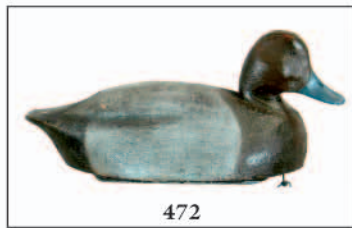
470 Large white fronted goose



471 Eider drake,
(French Collection)



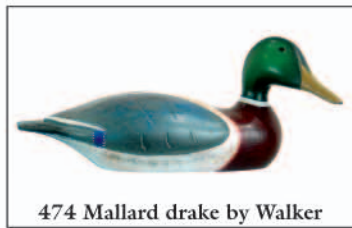
472 Redhead pair
by Frank Schmidt



472



473 Bluebill drake
by Frank Schmidt



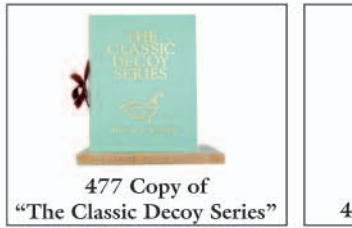
474 Mallard drake by Walker



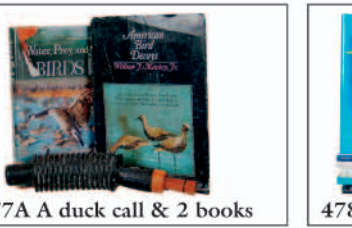
475 Mallard drake



476 Three Masons



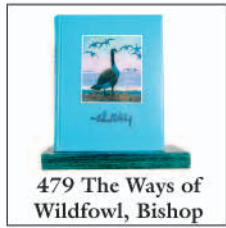
477 Copy of
"The Classic Decoy Series"



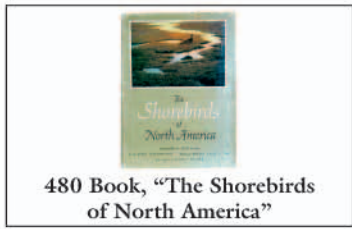
477A A duck call & 2 books



478 Six books



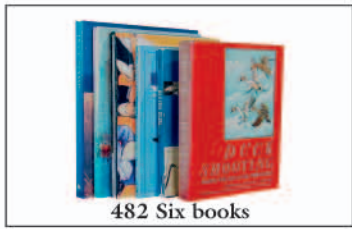
479 The Ways of
Wildfowl, Bishop



480 Book, "The Shorebirds
of North America"



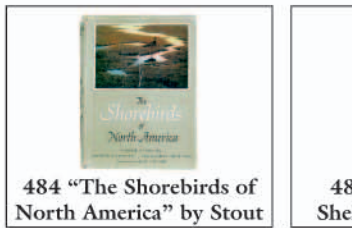
481 Four copies of "Long Shore"



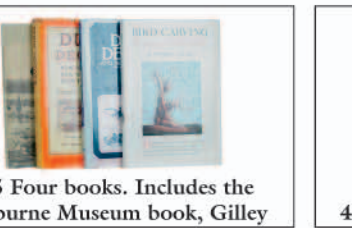
482 Six books



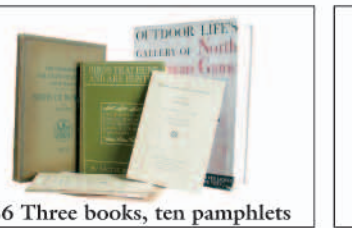
483 Eleven fishing catalogs



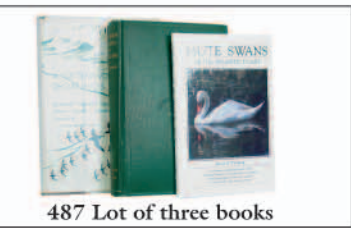
484 "The Shorebirds of
North America" by Stout



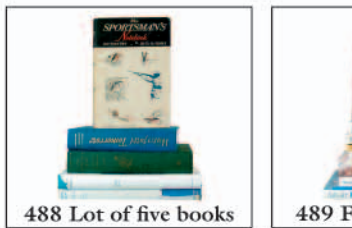
485 Four books. Includes the
Shelburne Museum book, Gilley



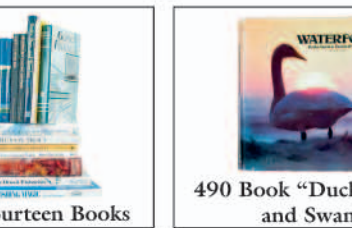
486 Three books, ten pamphlets



487 Lot of three books



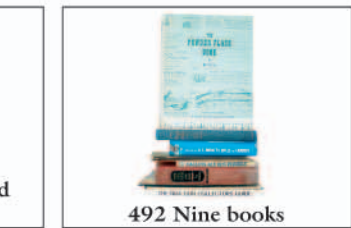
488 Lot of five books



489 Fourteen Books



490 Book "Ducks, Geese,
and Swans"



491 Five Hunting and
Fishing Books

492 Nine books



493 Five books



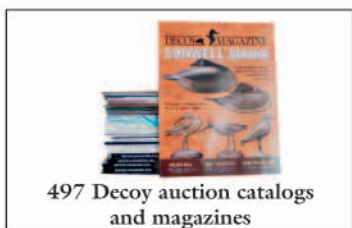
494 Decoy Collectors Guides



495 Fur-Fish and Game magazines



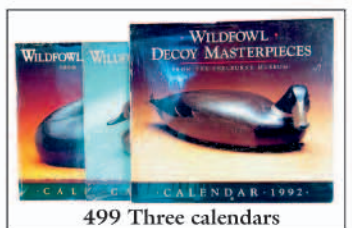
496 Decoy Auction Catalogs



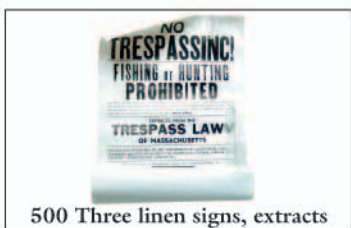
497 Decoy auction catalogs
and magazines



498 Wildlife magazines



499 Three calendars



500 Three linen signs, extracts

DETAILED DESCRIPTIONS

301. **Lot of three restored Mason Decoys.** Two Standard and one Premier. 200-300
302. **Lot of two Mason decoys.** Early, slope breast Peterson Factory decoy repainted as a redhead. Bill may have been recarved. Hit by shot with thin crack in bottom. A Mason Premier bluebill drake. Eyes and neck filler missing. 200-300
MacKenty-Coulter Vineyard gunning rig.
303. **Lot of three Mason decoys.** A Mason Factory decoy repainted as a redhead. A redhead drake. Factory body with a Vineyard head. A Mason Standard Grade glass eye blackduck. Body has been sawn in half with sections added. 100-200
MacKenty-Coulter Vineyard gunning rig.
304. **Lot of two Mason decoys.** A Mason Factory Standard Grade black duck. A Mason Factory Standard Grade tack eye black duck. Some original paint which is very dark. 100-200
MacKenty-Coulter Vineyard gunning rig.
305. **Lot of two Mason decoys.** A Mason or similar factory body with a replaced head. Head separate from body. A Mason, Standard Grade Factory blackduck. Worn almost entirely to wood. Eye missing with a tight crack in bill and neck filler missing. 150-250
MacKenty-Coulter Vineyard gunning rig.
306. **Hays Factory glass eye canvasback in completely restored paint.** Overall good structural condition. 100-200
307. **Small wood duck drake.** Scratch feather detail on back. Dent over left eye and crack in neck. Original paint with light to moderate wear. Stamped in bottom: "E.B. 1957". 100-200
308. **Swan of Canadian origin.** Carved feathers and head turned slightly to the right. Original paint. 100-200
309. **String of three split tail yellowlegs ca 1970-1980 in original paint.** All have the "B" brand for New Jersey maker Bruce Bieber. 200-400
310. **A. E. Crowell Monomoy style brant with replaced head and repainted body.** Retoration by R. Clifford of Cape Cod. Ellery Clark collection. 200-400
311. **Lot of two decoys.** One teal and one European widgeon. Both are a combination of worn original and overpaint. Widgeon shows heavy wear. Found while traveling in France by Joe French. 150-250
312. **Lot of two Civil War period decoys.** A bluebill drake in a combination of repaint and some original. Has small chips and thin cracks. Second is a bufflehead drake in crusty old paint. Chip missing in neck. From the Fairbank collection. 300-500
313. **Lot of three decoys.** A Contemporary carving of a Carolina Ruddy duck drake. In antiqued condition with some shelf wear. "N.S." brand on bottom. A Diminutive whistler drake in old gunning repaint. Small chip in tail. Two piece head and neck construction or an old repair. "H.G." cut and painted on bottom. Original keel for winding anchor line. A re-headed black duck in old working paint. 200-300
314. **Bluebill drake by Al Wragg, (London, Ont.)** Strong rasping and stamp feather detail as well as carved and delineated wing tips. Strong original paint with some minor darkening. Rubs to wood on edges of tail and some areas of light rubs to high spots overall. Knot (5/8") visible on lower right side. Very good condition. 150-300
315. **Lot of two decoys.** An oversized bluebill hen possibly from the Wisconsin or upper mid west area. Good structural condition with a shallow ice groove. Original paint shows moderate to heavy wear. A white-winged scoter by Pettegrov of Southwest Harbor Maine (Info supplied by collector tag on bottom). Old paint, some original. 150-300
316. **Victor factory mallard drake.** Neck filler missing and head may be a replacement. Puppy chew to bill tip. Original paint with moderate wear and staining. Bottom retains "Victor" brand/stamp. 50-75
Provenance: Fairbank collection.
317. **Oversized black duck with slightly turned head.** Excellent original condition – never rigged. 100-200
318. **General Fiber Co. / General Molding, St Louis Missouri, Canada goose field shell.** Paper mache in excellent structural condition. Original paint with some light fading and wear to the high spots. "Ariduk" embossed on the bottom. 50-100
319. **Lot of two Wildfowler decoys.** Wildfowler decorative mallard drake. Excellent and original in all respects except for one tiny paint chip on top of head. "Point Pleasant" ink stamp. A Wildfowler black duck. Oversized balsa model. Appears to be original paint but probably purchased and painted by another hand. Original keel and Old Saybrook stamp. 100-200
Provenance: Swain Collection
320. **Two pairs of Wildfowler teal.** A pair of Wildfowler green-winged teal. Both bear the Quogue stamp. A Pair of Wildfowler blue-winged teal. Probably Babylon or Bohemia period. 300-500
Provenance: Swain Collection
321. **Wildfowler black duck.** Balsa, "Atlantic Coast Model". Appears to be original paint in the "feather finish" with light wear. Surface has been coated with a sealer. Original keel but no factory stamp. 150-300
Provenance: Swain Collection

322. **Wildfowler canvasback drake.** Two piece pine or cedar in excellent structural condition. Very good original paint with a few very tiny areas of blemishes or rubs. Retains original keel but no factory stamp. 150-300
Provenance: Swain Collection
323. **Lot of two.** A half size carving of a bluebill. Head turned slightly to left with carved feather detail. Original paint with light wear and rubs. Written on bottom: "Blue bill – Scaup". A small decoy with a broken bill and a large chip missing from neck. Some original paint on body with very heavy wear. 75-125
324. **Mason Premier bluebill hen in gunning repaint.** Some traces of original on head. Overall good structural condition. 100-200
325. **Lot of two decoys.** A hollow Bluebill Hen from Milford, CT ca 1900 with glass eyes and worn old working paint. Starr Collection ink stamp, Starr address label and BB-27 on the bottom. Original teardrop weight. A broadbill hen decoy from CT. Tack eyes, two piece body with small paddle tail. Old working paint with flaking and chipping. Struck by shot. 200-400
326. **Large solid body crow decoy with split raised wings.** Made with laminated sections of wood on the head. Some of the laminations have loosened on both sides of the face. 75-125
327. **Pair of ruddy ducks by Steve Merritt.** Both heads turned slightly to the right. Hen has carved, raised wing tips, and tail feathers. Excellent original paint and structural condition. Both retain the deep hot brand: "SCM" on the bottom as well as the signature "Steve C. Merritt Chincoteague, Va". Hen is dated "2004" and the drake is dated "2003". 150-250
328. **Stylish whistler drake from Vermont or Lake Champlain region.** Black areas are original paint and the white is an in use touchup. Moderate wear and rubs to high spots from use. Head lifted slightly from body. 150-300
329. **Bufflehead drake, possibly from Maine.** Paint appears original with some scuffs and wear. Thin crack in back has been filled. 200-400
330. **Folky eider drake.** Original paint with distressed surface with rubs to tail, edges, and top of head. Carved "LA" on bottom. 150-300
331. **Pair of mallards by Jim Slack.** Alert, high heads, and probably hollow carved. Excellent original paint. Excellent structural condition. Both birds have the hot brand of: "Jim Slack – Maker" on bottom. 150-300
332. **Hollow bluebill hen by Reineri.** Concave carved tail with head turned slightly to the right. Excellent original paint and structural condition. Signed on bottom "Reineri – 99". 100-200
333. **Lot of three decoys.** An upstate New York whistler drake. Original paint shows light overall wear. Painted "Nelson" on bottom. A bob tail Michigan canvasback drake. Old repaint with scratch feathering on back. A scoter from the Canadian Maritimes. Old working gunning paint with moderate wear. 200-300
334. **Lot of four bufflehead drake decoys.** One is a Mason Factory copy with original paint which has been aged. The other three are in original paint with wear ranging from light to none. One is signed "Moore – 73", one "E Braden – 1977", one "Jan and Joanne Crokan(?) – The Call of the Loon – Shanty Bay (?) – Aug. 89". 300-500
335. **Lot of four Havre de Grace Canada geese buy Paul Gibson.** One has piece of bill missing and a crack in the neck and one has a large crack in the bill. All have knots visible or small checks and blemishes to the bodies. All are in various stages of gunning repaint with some varying amounts of original paint. *All branded "F.H.L."* 200-300
336. **Lot of two Havre de Grace decoys.** One has a crack in the neck with the nail visible on top of the head. Both have the weights removed. Both appear to be in original paint with light wear on one and slightly more wear on the decoy with the cracked neck. Both have the painted rig mark of "GK". 200-300
337. **Lot of two decoys.** A turned head "antiqued" canvasback drake in the style of the Wards by T. J. Hooker and a widgeon drake by Stony Point Decoys. Both are signed by the maker or factory: "T. J.s Rig – The Sporting Life – Limited Edition 97/250 – T.J. Hooker – 1978" (Can) and "Stony Point Decoys – Glen Burnie, Md." (Widgeon). 150-300
338. **Lot of three decoys.** Hollow canvasback drake with head turned slightly to the right and raised wingtips. Excellent condition. Bottom has ink stamp which reads: "A Ward Brothers Creation – Torry & Russel – Portage La Prairie, Man. Canada". Also has ink date "1978". Second decoy is a content hen bluebill with head turned slightly to the left. Excellent original paint. Bottom reads, "Hutch Decoy Carvings, Ltd. – Maryland – Founded 1974 - 1980". Also has ink signature of "Hutch(?) – 1982 – Bluebill hen". Also a tucked head mallard drake by Robert Alvin, signed. Hollow carved. Excellent original condition. Signed on bottom. 400-600
339. **Red breasted merganser hen by Herb Daisey Jr.** Signed on bottom in ink: "Herb Daisey Jr. – Chincoteague Island, Va. – Red Breasted Merganser Hen". 100-200
340. **Lot of three Quebec decoys.** Pair of goldeneyes. Black duck with some feather stamping. Good original paint with some touch up. 150-250

341. **Canvasback drake from Michigan.** Old crack in neck has been reglued. Combination of some original with in use repaint which shows some wear and rubs to wood. Tight check in bottom edge. 100-150
342. **Lot of two canvasbacks.** A Michigan, canvasback drake of balsa construction. Very worn paint. A canvasback drake by the Wildfowler Decoy Factory. Good condition. Retains strong "Babylon, N.Y." brand. 200-300
343. **Lot of two bluebills.** One from the Quebec area. Old gunning repaint with minor rubs and wear. Nice gouge detail. Bluebill drake in old gunning paint, replaced bill. 150-250
344. **Wildfowler black duck.** Balsa, coastal model. Original paint with light to moderate gunning wear. Some paint loss on left tail and a few rubs on head. Shallow 2 3/4" dent on left side. Original keel but no factory stamp. 150-300
Provenance: Swain Collection
345. **Lot of two decoys.** A Michigan bob tail canvasback hen. Crack in neck and a few tight checks in body. Original area of roughness on right bottom edge. In gunning repaint with light wear. Excellent, hollow caved mallard drake by "Reineri". 100-200
346. **Pair of Wildfowler buffleheads in the tucked head position.** Excellent original paint under a coat of sealer. Two small dents on top of drakes head as well as a very tiny dent in tail. Each stamped in ink "Bufflehead Hen" and "Bufflehead drake". Both bear the "Babylon, N.Y." hot brand. 200-400
Provenance: Swain Collection
347. **Wildfowler mallard drake in three quarter size.** Near mint with a very tiny dent in bill. Point Pleasant ink stamp on bottom. 100-200
Provenance: Swain Collection
348. **Wildfowler black duck.** May be a special order with deeply incised wing patches. Fine original paint. Original keel and Saybrook stamp. 150-250
Provenance: Swain Collection
349. **Lot of two decoys.** One appears to be a Hudson "Vac Sta" model mallard hen with an unusual, perhaps special order, paint pattern which appears to be original with light gunning wear. The second may be a Pascagoula Factory black in a combination of some original paint with extensive gunning touchup. 100-200
350. **Lot of seven items.** A Herters Factory decorative yellowlegs. Stick broken off in stick hole. Two miniature sanderlings on a driftwood base, a miniature merganser, a miniature loon and two unpainted shorebirds with no bills. 100-200
351. **Wildfowler green-winged teal drake with head turned slightly to the left.** Near perfect factory paint. Has Point Pleasant ink stamp and is signed "Green-wing teal male - '1970' - Charles R Birdsall". 150-300
Provenance: Swain Collection
352. **Canvasback drake.** A special order Wildfowler made in the Illinois River style. Excellent original paint. 150-300
Provenance: Swain Collection
353. **Pair of shoveler decoys signed "Capt Harry Jobes, Maker" on the bottom.** Good original paint with a few bubbles on the back of the hen and a rub on the breast of the drake. 100-200
354. **Fine pair of hollow carved buffleheads by New Jersey's Clarence Fennimore.** Excellent and original in all respects. Mr. Fennimore comes from a long line of decoy makers and carves in the traditional Jersey shore style. Both stamped "CGF" and drake signed by Mr. Fennimore. 250-500
355. **Lot of two mallards.** First is a slightly undersized mallard drake by Kenny Boudreaux. Individual feather detail. Fine original paint with no wear. Written on bottom: "Carved and Painted by Kenny Boudreaux Sr. 8-14-81, 4-11-82, #1 mallard". Second decoy is a mallard drake by Ron Vick. All original paint. Signed in pen on bottom: "Ron Vick - #472". 150-300
356. **Lot of four decoys.** Three buffleheads by Don Griffen and a hooded merganser drake by Ware. Merganser has very good original paint which has been antiqued. Bird is signed "Ware - 83". Both hen buffleheads have heads turned to the left and one has raised wings. Both are signed "Don Griffen". One is dated 2004 and one 2005. Preening drake bufflehead has tight check on both bottom and top of body and is signed: "Don Griffen - 2004". 250-500
357. **Lot of two decoys.** Preening pintail drake by "T. Chiado" with his name cut into bottom. Excellent structural condition. Repaint under a coat of sealer. Restorations by Harvey Pitt. Also a hollow pintail drake in a combination of repaint and old paint. Crack in neck has been refastened and there is an old sliver of wood missing from the right cheek. Bottom has painted " ? _Holloway". 200-400
Provenance: Swain Collection
358. **Mallard drake by Mike Vallero of Spring Valley, Ill.** In restored condition. Restoration by Charlie Moore. 150-300
Provenance: Swain Collection
359. **Petite whistler drake.** Collector info indicates that it was found in a rig at Rice Lake, Peterborough, Ont.. Crazed, lightly worn, mostly original paint. Partially hollowed from below. Old chip off underside of bill. 200-400
Provenance: Swain Collection
360. **Rig of seven cork gunning bluebills with wooden heads and bottom boards.** Two are slightly smaller, smoother, and better carved and painted than the rest and seem to have served as models for the other five. All are in excellent original condition with only a few surface rubs to the finish from handling and stacking. All have keels and a deeply cut "RWH" on the bottom. 200-400

361. **Lot of two decoys.** A mallard by Charles Perdew in natural wood. Never rigged. Also a bluebill drake. Collector information indicates the carver to be Bill Simmons. Back carving reminiscent of the Angers of Belleville. Very tiny tight crack in neck. Original paint with moderate wear and two or three small rubs to wood. Swing weight has been removed.
Provenance: Swain Collection 200-400
362. **Lot of two folk carved undersized mallard drake decoys ca early 1900's.** Two-piece vertically joined heads and four piece horizontally joined bodies. Original paint with overall moderate wear. One head has large areas of wear to wood and roughness to bill. Unique pair of decoys. 150-300
363. **Lot of two.** A bluebill drake by Decoys Unlimited, Erie, PA. with heavy wear and a Wildfowler with moderate wear on original paint with some possible light in use touch up to black on breast and head. Retains original keel and Wildfowler stamp. From the "MARKHAM" (Oconomowoc, Wisc.) rig and so branded. 200-300
364. **Lot of two decoys.** A redhead drake by Lacombe (info on old collectors tag on bottom). Old crazed paint appears to be the original over a coat of light primer. Comb painting detail on back. Old repair to bill. Also a bluebill hen from the St Clair flats. Hollow carved with a thin bottom board. Original paint with moderate to heavy gunning wear with some rubs to wood. Old crack in neck seat. Hit by shot. 200-300
365. **Hollow pair of mallards by Roger Turner of Mallorytown, Ontario.** Signed in pencil and dated 1989. Both are in contented, tucked head positions. Excellent structural condition. Fine original paint with two or three tiny chips on the back of the drake and one tiny dent to right wing of the hen. 200-400
Provenance: Swain Collection
366. **Lot of two decoys.** One turned head widgeon with carved and raised wings. Fine original paint. Carved "Vinson" on bottom. Second may have been intended as a shoveler drake. Crack in neck. Paint appears original. 150-300
367. **Lot of four decoys.** Fresh water coot stamped "Vinson" with moderate shelf wear and rubs. Mallard drake with "Outler" brand – antiqued original paint with light wear. Louisiana blue winged teal in original paint with light wear. Fourth may be a Louisiana bluebill or ringbill with carved wings. Gunning repaint with heavy wear. 200-400
368. **Lot of two goldeneye drakes from Maine.** Mostly original paint with heavy flaking and crazing. Thin check in the top right of one decoy. Few knots visible. Overall good structural condition. 200-350
369. **Pair of folky minis from Wisconsin.** Large worn spot on the mallard drake. Some wear and minor flaking. 50-100
370. **Mallard drake of Canadian origin.** Head turned slightly to the left. Carved raised wings with some feathering detail. Tight check in breast. Original paint with moderate wear. 75-100
371. **Three quarter size canvasback drake by T. J. Hooker in the Perdew style.** Tight check in neck. Antiqued original paint with some shelf wear. Has Ducks Unlimited plaque on base with 1981 "collector series". Also signed by the artist. 100-150
372. **Canvasback drake by Frank Schmidt.** Original paint with moderate wear. Two or three dents to wood on back. Shot hits to right side. 100-200
Provenance: Swain Collection
373. **Black duck or mallard hen possibly Paw Paw Bait of Paw Paw, Michigan.** Balsa construction. Heavily worn paint, some of which may be original. 50-100
374. **Black by Connecticut's noted watercolorist, Chet Reneson.** Carved in classic Stratford school style. Strong original paint with some light rubs. One small blemish to paint on left tail edge. Branded: "Reneson". 250-400
375. **Small mallard drake with carved wings and slightly raised wing tips.** Original paint with rubs to tail and bottom edge. Carved "LA" on bottom. 75-125
376. **Lot of three decoys.** A bluebill. Old gunning repaint. Hit by shot on left side and crack on right side. Factory bluebill. Overall good structural condition. A Black duck from Canada. Carved wings and some feather detail. Original paint with a large split on right breast and neck. 200-300
377. **Content canvasback drake with head turned slightly to the left and carved wing tips.** Original paint with light shelf wear and some slight staining. 100-150
378. **Mason challenge grade bluebill drake.** Gunning repaint with some wear and shot hits on right side. Thin back check. 200-400
379. **Pair of canvas covered decoys by an unknown factory.** Good original paint with light wear. Few wrinkles but no ribs or teas to canvas. 150-300
380. **Large hollow carved swan with well carved and turned head.** Paint appears to be the original. Stamped under tail: "Dawn Sears". Attractive carving. 300-500
Provenance: French collection
381. **A Whistler drake by Cape Cod carver Marty Collins.** Carved in the style of Gus Wilson of Maine. Excellent structural condition with the makers hot brand on the bottom. 200-300

382. **Lot of two decoys.** A preening whistler drake by Marty Collins in a classic Cape Cod style and one of Mr. Collins earlier works. Tight checks on back and bottom. One small knot. Early hot brand on bottom. Also an old squaw hen by Marty Collins of Excellent original paint and condition. Makers early hot brand on bottom. 400-600
- 383A. **Sleeping widgeon drake by Roy LeGaux (b 1939) from Meraux-Slidell, LA.** Carved raised wings and primaries and thin extended tail. Bill nestled under right wing. Beautifully painted with no visible wear. Signed on bottom "Roy LeGaux Sr." and the notation "Bill(?) - Thanks - Ray!" Also carved "Roy LeGaux - St Bernard, La. - 2002". Mr. LeGaux is one of Louisiana's most talented living artists and decoy makers. 1000-1500
- 383B. **A head back preening marbled godwit by Holger Smith, Mattapoisett, MA with carved wings and split tail.** Excellent original paint. Stake broken and poorly reglued. 200-400
- 383C. **A breast preening knot by Holger Smith, Mattapoisett, MA with carved wings and split tail.** Excellent original paint and condition with Smith's brand as well as his signature with the address and date of 1981. 200-400
- 383D. **Peep by Hurley Conklin on Manahawkin, NJ.** Excellent original paint and condition. 200-400
384. **Lot of two decoys.** Large decorative shorebird by Reneri. Good original paint with light shelf wear. Base has painted: "Reneri - 02". A small decorative shorebird with carved wings and split tail. One leg broken and one is missing. Original paint with some paint loss on back - light overall wear otherwise. 150-300
385. **Lot of two decoys.** A decorative peep by Rhodes. Split tail. Some light rubs to tip of tail and high spots. Overall condition very good. Signed: "Rhodes". A Contemporary split tail, lesser yellowlegs. So called "Nantucket Rocker" or "Banana" style. Nice antiqued original paint with applied shot hits. Signed: "Drodes 0 2K". 150-300
386. **Lot of two shorebirds on natural sea clam or quohoug bases.** Larger yellowlegs has carved and raised wings, tucked head and a broken bill. Some wear. Smaller is a peep or lesser yellowlegs. Preening with a split tail. Damage to one thigh with dusty original paint. 100-200
387. **Lot of two decoys.** Curlew carved in the Virginia or Carolina style. Two piece vertically laminated body. Original paint with moderate to heavy wear. Also a Mason Factory plover. Probably by the new Mason Decoy Company. 200-400
388. **Decoy lot.** A string of five black bellied-plover "flatties" mounted on a board. Antiqued, original paint. Signed illegibly on rear with notation: "Not by Bread Alone". 150-250
- 388A. **Print by A. Pope "Upland Plovers" Matted and framed, good condition.** Lower margin "Alexander Pope, Jr." 20" x 13 3/4". 200-400
- 388B. **Hand colored humorous pen and ink drawing with a sheriff and a man with a gun and dead rabbit.** Titled "Mr. Jorrock is arrested for the murder of old Tom". Excellent condition, shrink wrapped. 12 1/4" x 16 1/4". 75-125
- 388C. **Lot of three.** Lithograph titled "Killdeer Plover, Chadrius Vociferus" signed "Guy Choleac" in pencil LR. Printed for The Frame House Gallery, 1971, Plate XX. In the original folder. 14" x 20". Small framed print of "Sabine's Snipe" in good condition. 11 1/2" x 9 1/2". A small print of "Tell Tale Godwit or Snipe" by Audubon #69 Pl 345 "View of East Florida" Colored lithograph Printed by J, T. Bowen, Philadelphia. 9" x 5 3/4". 150-250
- 388D. **Lot of two Victorian hanging game prints by LeRoy.** A grouse, woodcock, and quail in nice muted colors and a mallard drake and green winged teal drake in good condition with some light foxing. 15 1/2" x 19 3/4" Signed LR "LeRoy, 1896". Retains old period frames in fair condition. 100-150
- 388E. **Poster "Ben Schmidt".** Framed fair condition with some moisture damage and fading. 22" x 24 1/2" 25-75
390. **1/3 size standing Canada Goose with turned head and painted eyes.** Square base is painted blue with some flaking of the surface. Head is laminated and the seams are visible with light flaking along the edges. Maker unknown. 25-75
391. **Lot of three pairs of miniature ducks, buffleheads, ruddys, and redheads.** All in XOC. Approx 1 1/2 in long. 50-150
- 391A. **Redhead drake in fine condition by Frank Adams of West Tisbury.** Also a duck call by an unknown maker. 400-600
392. **Lot of two decoys.** A small decoy of unknown species in natural wood finish by "Thomas" of Martha's Vineyard, Massachusetts. Bill broken and missing. Some scuffs and scratches to varnished finish. Signed/stamped "M Thomas - Edgartown, Mass." A large black duck. Found and probably made on Martha's Vineyard. Some original paint with moderate to heavy wear. Cracks in back and bottom. 100-200
393. **Lot of two decoys.** Verity style peep by Will Kirkpatrick. "WEK 81" branded. Also a feeding black-bellied plover in the Verity style by Will Kirkpatrick. Both in fine original condition. Retains the "WEK 81" brand. 200-400
394. **New England black bellied plover.** Hole in tail for stringing. Old repaint shows light wear. Retains museum inventory number. 100-200
Provenance: Shelburne collection.

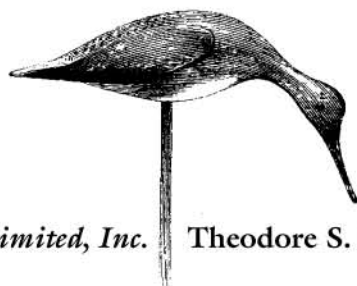
395. **Merganser hen from Nova Scotia.** Overall small chips, cracks and dings. Old signature on bottom "Lewis Horne – Little Dover". 200-400
396. **Factory mallard.** Hollowed from breast with inlet and recessed plug. Repair to tail chip and base of neck. Worn mostly to bare wood which has darkened somewhat. Bottom has partial "Victor" stamp. 50-75
397. **Lot of two decoys.** A black duck. Worn gunning paint. Retains large old brand which appears to read: "A. KLEIVHANS DANH". Also a canvasback drake with a Gus Moak body with a Michigan style head by another. Old working paint with uniform moderate to heavy wear. 100-200
398. **Pair of geese from the Quebec area of Canada.** One has head turned to right and the other has its head back in a preening pose with an open beak. Both have raised wings. Turned head has repair to bill. Original paint with moderate wear. 200-400
399. **Lot of seven hand carved decoys of by various makers or factories.** Some are reheads. Five are in very worn condition with splits, cracks and flaws. Two canvasbacks may be in worn original paint and one is stamped "J. W. Right". 200-400
400. **Lot of 10 assorted hand carved decoys.** 5 canvasbacks, one whistler, one pintail, two mallards and a teal. Most are in what appears to be original paint and many are unrigged. Some heads are loose and overall condition is fair to good with chips, cracks and dings. 200-400
401. **Lot of six decoys stripped to bare wood.** Various makers and species. One head cracked and separated from body. Most have checks, cracks or dings. 100-200
402. **Lot of five carvings in natural wood finish.** One is branded "Stony Point Decoys – Glen Burnie Md." The other four are all marked "MME -71" on the bottom. One is a wood duck and the other three are probable teal, two of which are ½ size. One looks like a Wildfowler. All "MME" birds are in excellent structural condition. 100-200
403. **Lot of four factory decoys including examples by Mason and Herters.** All are in gunning repaint or have been restored or repainted. Some heads are loose and there are cracks, checks and/or chips. Some have replaced eyes. Most have moderate to heavy gunning wear. 200-400
404. **Lot of six decoys from various regions.** One stripped to bare wood. Most are hand carved. Some are in original decorative finish or repaint and others are in well worn gunning repaint. At least two have damaged bills and some have checks, dings and or repairs. 150-300
405. **Lot of five decoys.** Most are of Canadian origin. Paint ranges from antiqued original to moderate touchup with wear. Some have body checks and the head has lifted on one or two but overall structural condition is very good. 100-200
406. **Lot of six factory decoys of various species, one aluminum duck mold and ½ of an aluminum crow mold.** Molds are in good shape and appear usable. Four of the decoys are in worn gunning repaint and one is in restored paint. One headless Mason hen bluebill is in worn original paint. Overall structural condition ranges from good to poor. 150-300
407. **Lot of 10 assorted hand carved decoys from various regions and by different makers.** A number of Maryland canvasbacks, a New Jersey blackduck, etc. Paint varies from good original with wear to well worn gunning repaint. Some are re-heads and some have cracks, splits and dings. 250-450
408. **Circular splint basket with handle.** 11 ½" dia. x 8 1/2" deep. 100-150
- 408A. **Rectangular splint basket in very good condition.** 8" wide x 12" long x 4 ¼" deep. 50-100
409. **Large rectangular basket with imperfections.** 20 ¼" wide x 30" long x 9 ½" deep. 100-150
410. **Circular basket with handle in good condition.** 12 ¾" dia. x 5 ½" deep. 100-150
411. **Six board blanket chest ca mid 19th century.** In old blue paint. Damage to feet and lid. 200-400
412. **Lot of two baskets.** The early woven basket with the handle is 8" dia. x 4 ½" deep has two corner tears. The shallow basket is 7 ¼" dia. x 2 ¾" deep in very good condition. 100-200
413. **Collection basket with lid.** In good condition. 100-200
414. **Woven dance rattle.** 6" dia. x 11 ½" tall. In good condition. 100-200
415. **Circular basket 19" dia. x 11 ½" deep.** Rim wrap imperfections. Few white specks. 100-200
416. **Utility basket in very good condition.** 14" W x 23 ¼" L x 7 ½" deep. 100-200
417. **Potato stamped circular splint basket with wrapped handle.** 9 1/2" dia. x 6" deep. Good condition with two tiny corner dings. 100-200
418. **Circular splint basket with handle 16" dia. x 9 ¼" deep.** In very good condition with a few little white drips. 100-200
419. **Potato stamped rectangular berry basket.** 5 1/4" wide x 7 ¼" length x 3" deep. In very good condition. 100-200
420. **Rectangular market basket in very good condition with 1 very tiny break.** 10 ½" wide x 18" long x 7 1/4" deep. 100-200

421. **Large teasel basket.** 25" dia. x 11 ½" deep. Handle damage. 100-200
422. **Large work basket.** Several breaks and heavy wear. 20 ½" w x 23" L x 9 ½" deep. 50-100
423. **Hardwood mortar and pestle.** Mortar is aprox. 6" in diameter and 7" high. Few small chips at base but no cracks. Nice patina. Pestle is aprox 11" long with some wear and dryness to base and roughness to top of handle. 100-200
424. **Small cranberry scoop approximately 12" wide.** Twelve teeth appear all original. Numerous in use repairs and "make-dos" with wear from days on the bogs apparent. Classic Cape Cod collectible. 200-400
425. **Lot of approximately 42 brass shotgun shells.** Various Remington and Winchester both 10 and 12 Ga. Condition varies from fair to very good. Many are tarnished. 100-200
- 425A. **Very desirable eel spear by Collins from Westport, Mass.** 150-300
- 425B. **Fox horn from the Gonet collection Westport, Mass.** 75-150
426. **Bluebill drake from Canada with head turned slightly to the left.** Good comb vermiculation on back. Black on breast and tail appears to be a second coat. Tight check on breast. Old collectors tag attributes bird to "Clarence Miller – Brookville, Ont." 100-200
427. **Lot of three decoys.** Two ruddy ducks. One with carved primaries and tail feathers by Walter Oler. In fine original paint. Hot brand of "W. Oler" on bottom as well as ink "Walter Oler" signature. Second decoy has head turned to the left and is in excellent original paint and structural condition. Bottom has hot brand. Decoy in raw wood by Doug Jester. Written on bottom: "Doug Jester – Chinco, Va. – early 1930's. 200-400
428. **High head bluebill drake decoy from Canada.** Glass eyes, two piece head and neck, solid body. Vestiges of original paint are visible. 50-100
- 428A. **RARE pair of Martha's Vineyard bluebills ca early 1900's in outstanding original condition with moderate wear and imperfections with a little more wear to the hen than the drake.** Stylistically they are influenced by the carvers Keyes Chadwick of Oak Bluffs. Both heads made to intentionally swivel for an animated appearance on the water. These decoys would have worked very well on the protected waters of Martha's Vineyard. Paint patterns after Chadwick's early style and possibly painted by him. Likely turned on a local woodworker's lathe after an early period Chadwick decoy. 600-1000
429. **Re-breasted merganser hen by Luther Nickerson, Cotuit, MA with a working replacement head done probably by Luther or his grandson, Steve Nickerson.** Mostly original paint with wear. 300-500
430. **Oversize white-winged Scoter by Marty Collins.** Oval impressed brand on the bottom. In excellent original condition. 250-350
431. **Turned head black duck by New Jersey carver Rick Brown.** In excellent original condition. 250-350
432. **Beautiful example of Victorian calligraphy.** Matted and shrink wrapped. "Remember Me" on a banner held by a dove. Below "Compliments of C. M. Anderson, Col O, July 30, '88". Excellent condition. 61/4" x 7 ¼". 200-300
433. **Matted print by Frederick Remington with two men in a Canoe hunting and a moose in the distance.** Light foxing. 150-300
434. **Limited edition print of hunting dog retrieving a cock pheasant by Leon Danchin.** #162 of 500. Signed LL "Leon Danchin" in pencil. Framed and matted. Frame is broken in the middle. Light foxing. 28 ½" x 20 ½". 200-400
435. **Framed vintage crewel needlework of a mill stream and mill with flowers and trees.** Nicely done in wool yarn on needlepoint canvas. Strong color. 13" x 9 ½". 100-300
436. **Original early Cape Cod watercolor of a sailing ship in a cove with a building on the shore.** 9" x 4 ½" Framed. 200-400
437. **Lot of four items.** A group of three decoy calendars, 1986, 1988, 1990, 2007. Two small framed Ridgeway bird prints. A quail and a golden plover. A set of four Bird Prints by Eugene Hoy. Pheasant, mallards, quail, and chuckar partridge. 100-200
438. **Lot of three items.** Limited edition print by Paul Casson titled "The First One, An Interpretation of the Joel Barber Legend." 214/1000. 23 ¼" x 16 ¾" Framed. A matted print titled "Moments That Live Forever" by Roy Mason. 14" x 10 ½". A French print of a plover titled "Le Pluvier Ribaudet Adulti" "P CCXVI". 8" x 11 ½". 100-200
439. **Framed print of "Scaup or Broadbill" by Lynn Bogue Hunt for the Dupont Powder Co.** Lower margin "1917 copyright Dupont". 50-75
440. **Bluebill hen by Mitchell.** Head turned sharply to the right. Carved shoulders, wing tips, primaries and fluted tail. Excellent original paint shows very light shelf wear. Carved "R. C. Mitchell" on bottom. 100-150
441. **Pair of upper Chesapeake pintails.** Drakes head turned to the right. Original paint with very light shelf wear. Small knot just becoming visible on lower rear. 200-300

442. **Lot of three decoys.** First is a standard grade glass eye Mason redhead drake in very heavily worn original paint. Second is a Maryland type canvasback drake with the head reattached as a preener. Gunning repaint with heavy wear and a large chip missing from left base of head. Checks in body and nail repairs on head. Has "H.C. Havemeyer" brand. Third is a small black duck in gunning paint with wear and small checks. 100-150
443. **Lot of two.** A black duck by the Wildfowler Factory. Hollow pine or cedar. Old gunning paint under a coat of sealer shows light to moderate wear. Thin cracks in back and illegible Wildfowler stamp on bottom. Also a Mason bluebill. Head may be repainted or replaced. 100-200
444. **Hollow carved mallard drake with head turned to the right.** Bottom covered with recessed canvas held in place with numerous tacks. Body surface chip carved. Reminiscent of Joal Barbers "modern decoy" that he published working plans for. Fine original paint with very light wear and a few small rubs on head and bill. 100-200
445. **Pair of snowy owl andirons.** Made by Swisher & Soule. 300-500
446. **Lot of two bluebill decoys.** One factory, one from the Vineyard. Second is a roughly carved Vineyard type drake. Both in poor condition. 50-100
447. **Early decoy.** A Dodge Factory widgeon. Heavy wear and some shot hits. Bottom has brands of "K.H. Boat" and "G.B.G.". 200-300
448. **Miniature gadwall hen by Charlie Wilbur.** Carved and raised wings. Original paint with little wear. Branded "CW" on bottom. 75-150
449. **Lot of two miniature carvings.** One an egret. Carved wings with some damage to feet. Second is an abstract bird in natural finish marked "Jamacia" on bottom. A paper tag stating "hand carved by Doc - Jamacia". 50-100
450. **Pair of blue winged teal by Hebert.** Both heads turned to right. Original paint with no visible wear. Both have the Hebert brand and flying duck on bottom. 100-200
451. **Lot of twelve miniature bird carvings including a Verity type peep.** 100-200
452. **Lot of four miniatures.** One is goose one pelican, one mallard, one metal pheasant. 100-200
453. **Pair of miniature folk art carved pheasant.** Nicely painted. One wing on the cock pheasant is loose. Also a Frank Adams Mallard Drake with bill loss and a Harry Jobs mini metal canvasback. 300-500
454. **Glass eye bobtail redhead by an unknown Michigan carver.** Old crazed gunning paint appears to be all original with light wear. Has a distinctive neck shelf and semi circular keel. "Moore" painted on bottom. 100-200
Provenance: William Moore Rig
455. **Michigan bob tail canvasback drake.** Head paint may be original. White on body has been strengthened with a coat of sealer. Two or three thin cracks in back. Overall good condition. Bottom has carved "39". 100-200
456. **Pair of lapwing decoys.** Carved wings on drake and accentuated crest on both. Paint appears to be the original with light to moderate wear under a coat of wax. A few small rubs and areas of minor roughage to the surface. Made to be used as stick ups with one hole under the drake and two under the hen. An unusual and interesting pair of decoys. 300-500
457. **Flatty painted eye yellowlegs ca 1900.** Hole in tail for stringing OP with light wear. Folky carving. 100-200
458. **Running Curlew by Will Kirkpatrick.** Original paint shows very light wear. One tiny drip of white paint on right side. Bill break repaired. "WEK" stamp on bottom. 100-200
459. **Life sized sickle billed curlew by the late Phil Fairbank, Essex, CT.** In XOC. Mr. Fairbank worked and hunted with Ted Mulliken of the Wildfowler Factory. He made these and shot over them with a camera. An article by Fairbank was published showing his rig deployed in an issue of Decoy Collector's Guide by Hal Sorenson. 200-400
460. **Lot of two folding yellowlegs "tinnie" shorebirds.** Apparently from two different manufacturers. Original paint with light overall wear and some flakes to metal on both. One shows light rusting in areas where flakes have occurred. One has strong stencil on inside which reads "Pat. Oct. 27, 1874". One probably by Stratier & Sohier. 200-400
461. **Yellowlegs "Tinnie".** Original paint with some small areas flaked to primer or bare metal. Some larger flakes on neck and bill. Minimal rust. Original stake included. 100-200
- 461A. **Canvasback drake by Madison Mitchell.** Original paint with moderate wear and a few small rubs and flakes to wood. Thin check along grain lines on left side and a thin, tight crack in neck. Small chip missing from right edge of tail. 200-400
462. **Cork Black Duck by Steve Kordas in OP.** Wear to the cork on the breast. Nicely feather painted. Slight roughage on the tail. 100-200
463. **Black duck by the late Bill Conroy.** Balsa construction and an early carving. Probably done while he was carving in Jamestown, R.I., before his move to Maine. Fine original paint with very light shelf wear - never rigged. Written on bottom: "Decoy Shack - Hand tooled by - Bill Conroy - 1971". 100-200

464. **Seaduck by Eugene Day of Sedgewick, Maine.** Perhaps intended as a goldeneye. Original paint with light wear. Some sealer applied over a knot to stabilize it on left side and a drip of bottom paint on right wing tip. Small sliver replaced under bill, seemingly original to time of carving. Chip carved head. Signed in pencil on bottom: Eugene Day – Sedgewick, Maine. Never rigged. 300-500
465. **Mason Factory Standard Grade bluebill hen in good condition with nicely restored paint.** One shot channel on the right side of the head, neck filler cracked with some missing. Glass eyes. Weight removed. 100-200
466. **Victor or Pascagoula black duck.** Appears to be OP with a heavy coat of sealer. Glass eyes. 75-150
467. WITHDRAWN
468. **Oversized coastal model black duck by Wildfowler in good OP with wear to the wood along the sides and top of the head and lower edges of the tail.** #73 impressed into the bottom. 200-300
469. **Widgeon drake by Harry Jobes with a grain check that has lifted on the left side below the wing.** In XOC with light wear. 150-300
470. **Large white fronted goose from Louisiana.** In OP with glass eyes and a few flakes of paint missing near the neck join. Bill nicely restored. 200-400
471. **Content eider drake from the Maine coast.** Unusual hollow construction with inlet bottom board and beveled base. Black is mostly original with the gunning touch up in that area having worn off. White is a crusty layering of numerous coats of gunning repaint. Large areas of white flaked to bare wood. Few tight checks along grain lines and a small crack under tail. 200-400
472. **Redhead pair by Frank Schmidt (Centerline, Mich.).** Heads turned to right with typical wing tip carving. Small area of paint loss in front of neck and a small old, original, scratch to the paint or check on the right cheek area on drake otherwise excellent original paint and condition with very light wear overall. 200-400
473. **Bluebill drake attributed to Frank Schmidt.** Head turned slightly to the left. Typical wing tip detail and stamped feathers but also distinctive gouge carving to the top of the tail. White on sides is probably a working overcoat. Remainder of decoy os mostly original with light wear. Old, original knot visible on lower right edge. Originally acquired at the 1989 Bourne auction. 100-200
474. **One half to three quarter scale mallard drake by Hank Walker.** Head turned sharply to the right. Carved wingtips and feather detail on back. Fine original paint with no visible wear. Signed on recessed weight: “Hank Walker – Decoys – Newbury, Mass.” 75-125
475. **Illinois river style hollow carved, mallard drake.** Paint appears to be mostly original with moderate overall gunning wear. Bill may be a replacement. 100-200
476. **Lot of three decoys.** One Mason Premier body (no head) and two other Mason Standard Grade decoys. Found with the rig of Newburyport snipe in this sale. 200-300
477. **One copy of “The Classic Decoy Series” portfolio by Milton C. Weiler.** Number 385/1000 and signed by Mr. Weiler. In original slip case. Book is in excellent condition while slip case has some small amount of moisture damage. 300-500
- 477A. **A Scotch Shaker duck call with two books: American Bird Decoys (Mackey) & Water, Prey, Game Birds.** Good condition. 200-300
478. **Lot of six books.** Wildfowl Decoys by Barber (PB); Shorebird Decoys by Fleckenstein; The Art of the Decoy by Earnest; American Bird Carvings by Mackey; Decoys of the Atlantic Flyway by Starr; The Great Book of Decoys by Engers. All in good average condition. 100-200
479. **One copy of The Ways of Wildfowl by Richard Bishop.** Limited ed by Brown and Bigelow, St Paul Minnesota, 1971. Number 1212/3000 “presented to Jack Borisch”. Book in excellent condition in slightly worn slip case. 100-200
480. **One copy of “The Shorebirds of North America” by Gardner D. Stout Ed.** With paintings by Robert Verity Clem. Second printing, Viking Press, N.Y. 1968. Book excellent in slightly torn and water stained DJ. 200-400
481. **Four copies of “Long Shore” by Joel Barber.** Reprinted with the author’s permission for DU. In XOC. Sale to benefit Ducks Unlimited. 100-200
482. **Lot of 6 books.** Wildfowl Decoys by Barber (PB); Duck Shooting Along the Atlantic Tidewater by Connet; Collectors Guide to Decoys (PB) by Huxford; Decoys – 60 Living Greatest by Harrell; Carving Duck decoys (PB) by Shourds and Hillman; Duck Stamps – by Weidensaul. All average to good condition. 150-300
483. **Lot of approximately eleven Richard W. Oliver fishing catalogs.** Dates vary with most in the early 1990’s. Very good to excellent condition. Not pictured. 75-125
484. **One copy of “The Shorebirds of North America” by Gardner D. Stout Ed.** With paintings by Robert Verity Clem. Second printing, Viking Press, N.Y. 1968. Book excellent in slightly torn DJ. Owners name on first page. 200-400
485. **Lot of 4 books.** Decoys of Shelburne Museum, Duck Decoys and How to Make, Paint and Rig Them by Connet, Duck Decoys and How to Rig Them by Coykendall, and Bird Carving by Wendell Gilley. All average very good to excellent condition. 100-200

486. **Lot of three books and ten pamphlets.** Outdoor Life's Gallery of American Game - good HB w/ slightly torn dj; Birds that Hunt and are Hunted by Blanchan - HB in VG cond; Univ. of NY - Birds of New York - HB w/ torn spine. Phamps are from the 1930 "school of game breeding" - good cond. 150-250
487. **Lot of three books.** Mute swans of the Atlantic Coast by Twining; Game Birds, Wildfowl and Shorebirds by Forbush and A Gathering of Shorebirds by Hall. All average very good condition. 100-200
488. **Lot of five sporting books including The Sportsman's Notebook and Waterfowl Tomorrow.** 100-150
489. **Lot of 14 Books.** Fishing and Boating Related. 100-200
490. **Ducks Geese and Swans of The World by F. S. Todd,** Good condition. 100-200
491. **Lot of Five Hunting and Fishing Books.** Good condition. 100-150
492. **Lot of nine hunting firearm, fishing and trapping books.** Good condition. 100-150
493. **Lot of five decoy and carving books.** Good condition. 100-150
494. **Lot of Decoy Collectors Guides in good condition.** 100-200
495. **Lot of Fur-Fish and Game magazines in good condition.** 50-75
496. **Lot of Decoy Auction Catalogs in good condition.** 50-100
497. **Lot of Decoy Auction Catalogs with a few decoy magazines in good condition.** 50-100
498. **Lot of vintage wildlife magazines in fair condition.** 50-75
499. **Lot of 3 calendars by the Shelburne, Museum, Shelburne, Vt. 1990, 1991 and 1992.** Mint condition in the original shrink wrap. 50-150
500. **Three early linen type "Posted" signs with extracts of the Mass. trespassing laws.** Approx. 11 1/2" X 25". 50-100



Decoys Unlimited, Inc. Theodore S. Harmon