



Warehouse Sale



Sunday, July 28, 2013

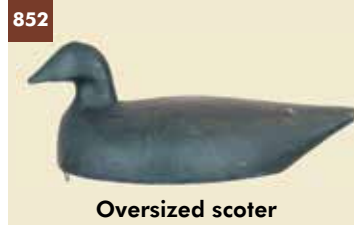
Will start at approximately 4pm



Crow and Louisiana heron



Wood duck drake



Oversized scoter



Rig mate pair of mergansers



Lot of 2 Illinois River mallards



Pair of solid body canvasbacks



Old squaw and canvasback



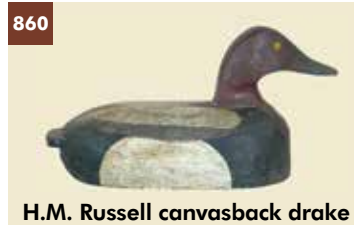
Lot of 3 decoys



Lot of framed artwork



Bluebill drake from upstate NY



H.M. Russell canvasback drake



Lot of 5 decoys



Lot of 8 factory decoys



3 scoters by Gordon Mann



Small white heron and flattie



2 flattie doves



Brant decoy



2 Massachusetts black ducks



Black duck and goldeneye



Lot of 4 decoys



Maine scoter decoy



Lot of 3 Maine decoys



Shorebird and black duck



Lot of 3 Louisiana teal decoys



Lot of 4 canvas geese



Louisiana pintail drake decoy



Louisiana pintail decoys



5 merganser decoys



Canvas mallard & metal pintail



Large loon from Maine



2 Louisiana decoys



3 freshwater coot shadows



882(2)

2 mallard drake decoys



883(2)

2 pintail decoys



884(2)

2 Louisiana mallard decoys



885(2)

Pair of hollow canvasbacks



886(2)

2 Mallards from Louisiana



887(3)

3 "Bob Tail" canvasbacks



888

Black duck made for a lamp



889

Long Island cork black duck



890

Cork Northern lapwing decoy



891(2)

Canvasback and pintail



892(3)

Redhead, mallard and teal



893(3)

2 mallard drake decoys



894(3)

3 Louisiana ring-bill decoys



895(4)

Gadwall drake



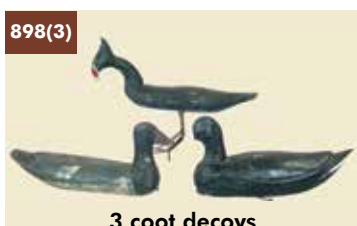
896(3)

Blue winged & cinnamon teals



897

Black duck



898(3)

3 coot decoys



899(2)

2 Louisiana decoys



900

Green winged teal drake



901

Green winged teal hen



902

Chesser blue winged teal drake



903

Chesser widgeon drake



904

Chesser widgeon hen



905

Chesser green winged teal drake



906

Chesser green winged teal hen



907

Jansson preening black duck



908(2)

Jansson decorative mallards



909

Balsa body mallard drake



910

Gunning black duck



911

Whistler drake made into lamp



912(2)

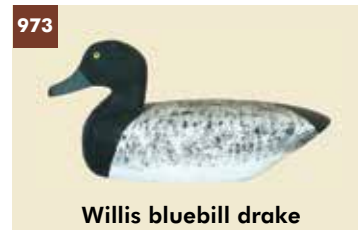
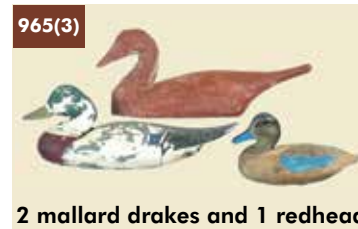
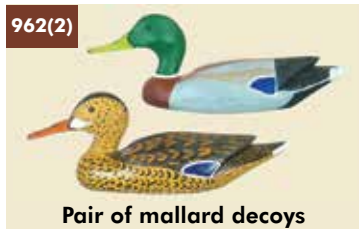
Mason factory glass eye decoys

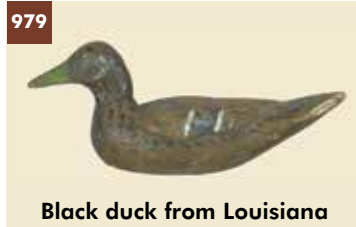


913(2)

2 mallard drakes







DETAILED DESCRIPTIONS

850. Lot of (2). A New England crow and a Louisiana heron. **200-400**

851. Wood duck drake. Carved, raised wingtips with carved primaries and double fluted tail feathers. Fine original paint. Keel and rigging removed. Notation on bottom: "3rd place – International Decoy Contest – Davenport, Iowa – 1970 – (signature) Don Zeug". **100-200**

852. Oversized scoter in combination of original paint and touch up. **100-200**

853. Pair of mergansers from the Maine coast. Nicely crackled and crusty original paint with some light bubbling of the surface. Some shrinkage to the paint with areas of wood visible, mostly on hen. Small old chip on left tip of bill on hen. **250-450**

854. Lot of 2 Illinois River mallards in old repaint. Top, a Charley Perdew mallard, bottom, a mallard by Vallero. **200-400**

855. Pair of solid body canvasback decoys branded W. T. Rusch. Excellent original paint and condition. **75-125**

856. Black-back seagull from Cape Cod and a canvasback in repaint. **100-200**

857. Lot of (3) decoys. A black duck, an oversized mallard drake in old paint, and a mallard, possibly Dodge, sans paint. **100-200**

858. Lot of framed artwork. Two watercolors, a merganser, and a raven, two prints, one embroidery. **25-50**

859. Bluebill drake from upstate NY in working repaint. **100-200**

860. Canvasback drake by H. M. Russell, Oklahoma (1939). In original paint with light wear and one eye missing. **75-125**

861. Lot of 5 decoys. Two factory coots, one swimming Downeast Sportcraft black duck, a folky merganser in very worn old worn paint, and what appears to be a fresh water coot. **125-250**

862. Lot of 5 factory decoys and 3 factory bodies in old over paint. Two bodies may be by Mason. **100-200**

863. Three Scoters by Gordon Mann, Rockland, MA. In very good original paint. **350-650**

864. Lot of two. A small white heron and a flattie shorebird. Both in original paint. shorebird has wear and flaking. **75-125**

865. Lot of two flattie doves. Original paint with light wear. 3/4 in wide. **50-100**

866. Brant Decoy with vertically laminated 8 piece body. Appears to be hollow with a bottom board. In original paint and light wear. **75-125**

867. Lot of two Mass. black ducks. One with over paint and one hollow in original paint never rigged. **100-200**

868. Lot of two. A black duck from New Hampshire in original paint with light wear. A goldeneye hen probably from Maine with a two piece body and heavy wear to original paint. Neck check and bill chip. **200-250**

869. Lot of (4). Top, a Challenge grade oldsquaw body with a new head. Left to right, a Challenge grade merganser hen body with a black duck head, a Mason Challenge grade canvasback in old paint over original, and a large bluebill. **250-500**

870. Oversize Maine scoter decoy in old gunning paint with moderate wear. Chip under the bill and "MR" carved into the bottom. **100-150**

871. Lot of (3). Two Maine decoys, a scoter and a goldeneye and a Havre de Grace can missing it's bill. **75-150**

872. Lot of two decoys. One is a shorebird with an upturned bill. and possibly intended as a ruddy turnstone. In natural stained wood which has been wiped to simulate feathering. Minor wear. By Richard and Marion Harris of Old Saybrook Connecticut with their paper label on the bottom. Second is a cork black duck with a carved wooden head by Tom Smith, CT. **75-25**

873. Lot of three Louisiana teal decoys. A pair of blue winged teal with painted eyes, in original paint, hen with a nicely turned head. A blue winged teal hen with carved wings, in original paint with some wear. **100-200**

874. Lot of four canvas geese, three Canadian and one snow goose. All are designed to be used as stick ups. Three are filled and one is canvas over a wire frame with a wooden head. Two are in good condition and two are in poor condition. **200-300**

875. Louisiana pintail drake decoy. Good old working paint with some original. Fair amount of wear. **100-200**

876. Lot of (2). A Louisiana pintail decoys a drake in original paint and a hen with shot marks and old working paint. **200-300**

877. Lot of five merganser decoys from the north Atlantic coast. One with a horsehair crest. All decoys have varying degrees of repaint, touchup and some with shot hits. In fair condition. **200-400**

878. Lot of 2 decoys. A canvas stuffed mallard hen by Reynolds and a metal pintail drake by the Chris Decoy Co. Sacramento, CA in good condition. **100-200**

879. Large loon with inlet head from Maine. Paint appears to be mostly the original with some old touchup to some of the white on breast. Some rubs to mellow wood on body. Thin grain checks and small dents on body. **250-450**

880. Lot of two Louisiana decoys. A black duck by Antoine "Bib" Isadore in old working paint and a redhead drake with less age and repaint. **100-200**

881. Three freshwater coot shadows on a triangle. Necks of each shadow reinforced with a wire. Original paint with overall light wear. One neck cracked and glued and two bills broken or slightly blunted. Slight damage to the head of one. **150-300**

882. Lot of two mallard drake decoys. One by Foret with original worn paint and an old bill replacement and an unknown mallard drake with good old paint and good condition. **150-300**

883. Lot of two pintail decoys. A hen with old over paint that is chipping a, from Europe and a drake in old working repaint. **100-200**

884. Lot of two Louisiana mallard decoys in original paint and good condition. Both are unused and unrigged. **200-300**

885. Pair of hollow canvasback decoys carved in the Bert Graves style. Rigged for use with "Graves" on the weights. Original paint with surface rubs. **200-300**

886. Lot of two Mallards from Louisiana. One by Chauvin. Both have original paint and light wear. **150-300**

887. Lot of three working "Bob Tail" canvasback drake decoys from Michigan. Good condition, old paint. **100-200**

888. Black duck made by Gordon Mann, Rockland, MA. Natural Finish with varnished surface. **200-300**

889. Long Island Cork Black Duck. Nicely carved and painted head, original keel. Most of the paint is worn from the laminated cork body. **50-100**

890. Working cork Northern lapwing decoy. The lapwing is considered a "Eurasian species" and a "rare straggler in late fall to the northeast coast of North America". (see National Geographic Society reference). **100-200**

891. Lot of 2 decoys. A nicely carved hollow canvasback drake made in the Graves style with rigging and a Louisiana pintail hen with nice form and rounded bottom. Both in original paint with light wear. **200-400**

892. Lot of 3 decoys. A redhead drake in good condition, a mallard and a teal in worn condition. **150-300**

893. Lot of three Louisiana blue winged teal decoys. In original paint with light wear. **200-400**

894. Lot of three Louisiana ring-bill decoys. In working paint with wear. **100-200**

895. Lot of 4 decoys. A gadwall drake signed by Herman Chauvin, Butte, LA in good condition, a pair of paper mallards in worn condition and a Pintail hen by an unknown maker. **150-300**

896. Lot of 3. Two blue-winged teal and a cinnamon teal drake From Louisiana. One has a bill chip others in good condition. **200-300**

897. Black duck. Factory made in some type of composite. **25-50**

898. Lot of three coot decoys from LA. All have some wear and shot marks. **100-200**

899. Lot of two Louisiana decoys. A spoonbill drake with an open bill and a canvasback drake. Both are unused with surface rubs and wear. **150-225**

*The following decoys by Grayson Chesser of Jenkin's Bridge, VA.
were made about 30 years ago and used on Cape Cod.
Some have small white spots on the surface that could be removed.
All are in strong original paint.*

900. Green-Winged Teal Drake by Grayson Chesser. Original condition, slightly turned head, glass eyes. Carved "C" in the bottom. **250-450**
Provenance: Ream Rig

901. Green-winged teal hen by Grayson Chesser. Original condition. Swimming pose with calling bill, glass eyes. Light wear. Carved "C" in the bottom. **250-450**
Provenance: Ream Rig

902. Blue-winged teal drake by Grayson Chesser. Slightly turned head, glass eyes. Slight paint shrinkage on the breast and under the tail. Carved "C" in the bottom. **250-450**
Provenance: Ream Rig

903. Widgeon Drake by Grayson Chesser. Slightly turned head, glass eyes. Slight paint shrinkage on the breast. Carved "C" in the bottom. **250-450**
Provenance: Ream Rig

904. Widgeon Hen by Grayson Chesser. Original condition, slightly turned head, glass eyes. Bill check, minor ding on the back. Carved "C" in the bottom. **250-450**
Provenance: Ream Rig

905. Green-winged teal drake by Grayson Chesser. Original condition. Light wear. Carved "C" in the bottom. **250-450**
Provenance: Ream Rig

906. Green-winged teal hen by Grayson Chesser. Original condition. Slight paint shrinkage on breast, glass eyes. Light wear. Carved "C" in the bottom. **250-450**
Provenance: Ream Rig

907. Preening black duck by R. G. Jansson of Cummaquid, MA. Head back over left shoulder with nicely carved, “cheeky” head. Nicely blended, all original paint with extensive individual feather detail. Some very minor flaking in area of right neck seam. Bottom has the rectangular “R. G. Jansson Cape Cod” hot brand. **200-300**

908. Pair of lifesize mallards by R. Gustav Jansson of Cummaquid (Cape Cod), Mass. Hen carved in a preening pose. Both have carved wings with fluted tails and the drake sports raised wingtips and an applied tail curl. Excellent original paint and condition. Both have the rectangular Jansson ink stamp on the cork covered bottoms. One of Jansson’s best efforts. **350-450**

909. Balsa body mallard drake by the Wildfowler Factory. Original paint with moderate wear. Scuffs and rubs to wood on tail edges and lower left edge. Wear to head from handling. Separation along two vertical body seams and head has been glued to body. Original keel and no stamp. Numerous “SGH” stamps in bottom. **100-200**
Provenance: Swain Collection

910. Gunning black duck by Ken Harris. Head turned to the right. Early style with nice painted feather detail. Original paint with light wear. Needs to be cleaned. Some rubs to wood on tail edge with lesser rubs on left wing and head. Retains large “Ken Harris Decoys. Woodville, N.Y.” white stamp. **150-250**

911. Whistler drake made into a lamp by Rosh Douglas of Ogdensburg, New York. Strong original paint with a few small imperfections or rubs on tail edge, top of head and center of back where the lamp mechanism was drilled through body. **200-300**

912. Lot of two Mason Factory glass eye decoys. One is an American merganser drake and one is a bluebill hen. Both have been repainted in the Mason manner. The merganser is a rare species for Mason. **250-350**

913. Pair of mallards c1980’s. Made after decoys made in the early 1900’s. In excellent original condition. **200-300**

914. Lot of two miniatures and one lifesize goldeneye c1900 from the Chebeague Island area of Maine. Made by the same hand. Heads set in shallow mortises. Original weathered paint with rubs to wood. Chip missing from right side of head of hen. Full size drake has a tucked head. Good structural condition. **150-250**

915. A Vineyard redhead drake attributed to James Look from his c1890’s period. Used in the Chappaquidick area of Martha’s Vineyard. Wear to original paint. Two-piece body with swing weight. A small oldsquaw drake in original paint with light wear. **250-450**

916. Mallard drake by Canada’s George Guyon. Head turned to the right with raised wings, carved primaries and fluted tail detail. Guyon’s signature single carved feather on back. Original paint with light overall wear. Minor rubs to top of head with minor roughage to wing and tail edges. Lightly hit by shot. **150-250**

917. Lot of two mallard hen decoys from Louisiana. An alert example with high head and original paint and a thinner working decoy in good condition and working paint. **200-300**

918. Goldeneye drake decoy by the late Fred Anderson of Portland, ME. Original paint with light wear and a few flakes and rubs. “A” for Anderson carved into the bottom. Fred was Gus Wilson’s next door neighbor in South Portland and as a young boy helped Gus with sanding, the making of merganser bills, and the painting of his decoys as “Gus did not enjoy the painting of his decoys.” Quote from Fred Anderson as told to me in the 1970’s. **150-300**

919. Unpainted miniature goldeneye hen by decoy carver John Thomas of Edgartown, Martha’s Vineyard, MA. **25-50**

920. Lot of two old working mallard hen decoys from Louisiana. Both in old working paint with wear consistent with use. **200-400**

921. Black Duck c1940 in excellent original paint by H. A. Davis of Waquoit, a section of East Falmouth. Black ducks by this maker are extremely scarce. **200-300**

922. Louisiana heron carving. Preening with split tail. Painted black. **150-300**

923. Nicely carved pair of mallard decoys from Louisiana made in the old tradition. c late 1900’s. Original condition with a few rubs and dings. **200-300**

924. Oversized standing mallard drake by William Goenne, King City, California. Good condition, original paint, light wear. **250-450**

925. Small Silhouette Canada goose made in the style of the famous Soper goose. Made by the late collector George W. Thompson, Cazenovia, NY. Very good original condition. Signed and dated 1987 on the bottom. **25-50**

926. 8 Department of Agriculture color posters. With birds, butterflies and wildflowers and Smokey the Bear. **25-75**

927. Pair of miniature ruddy ducks by James Ahearn attached to a lamp base. In good original condition. **200-400**

928. Miniature decoy model wood duck drake by Alfred Gardner, Accord, MA. c 1950. 3.5” long. Circular Ink stamp on bottom reads “Alfred B. Gardner, Accord, Mass”. Original paint. **100-150**

929. Miniature calling merganser hen possibly by the late “Square” Gould, of Cape Cod and Brunswick, ME. Head turned to the right with double carved split wingtips. Excellent original paint with no visible wear. Very faint and illegible writing on bottom. **25-50**

930. Lot of miniature decoys. Four composite minis by "Artek – North American Waterfowl Collection" (Goose, Pintail w/ broken bill, wood duck drake and a loon). One palm frond type ¼ size mini of an unknown species and a ¼ size mini of Canadian origin and unknown species. Overall condition is good except for the bill on the mini pintail. **25-50**

931. Lot of two ring-bill decoys. One by Don Contrachris, Lafitte, LA and an old working decoy with one glass eye missing. **200-400**

932. Lot of four flattie shorebirds, two plovers or knots and two lesser yellowlegs. The two yellowlegs are approximately 3/8" thick. Original paint which has darkened slightly from age shows overall light wear. Some rubs on upper right edge. Rusted, original wire nail bills. The remaining two appear to be mostly original paint, one with light to moderate wear and what is probably a replaced bill. Other has heavy wear, one eye missing numerous heavy rubs with an oversized wire bill and wing outlines. **100-200**

933. Redhead Drake with slightly turned head by Barry Chauvin, Larose, LA. OP and good condition. Never rigged. **200-300**

934. Pair of Ring-bill Decoys by Barry Chauvin, Larose, LA. Nicely carved heads and wings. Original paint with light wear. **300-500**

935. Pair of nicely carved pintail decoys from Louisiana by Barry Chauvin, Larose, LA. Original paint with light wear. **300-500**

936. Lot of three Louisiana decoys. Two Louisiana pintails with replaced heads and a small working teal hen. In use wear on all three. **50-100**

937. A wood circle with four unpainted ducks attached and a miniature wood duck hen from LA. **25-50**

938. Lot of two decoys. A Louisiana pintail hen by "Vinson" in unused condition and a hollow mallard drake by Michael Vallero, an Illinois River decoy maker. In working over paint. Neck check. **200-300**

939. Lot of two shorebird carvings. One is a black-bellied plover intended to mimic an old working shorebird. Original paint has been aged and distressed with simulated shot marks. Excellent condition. Second is a yellowlegs with head turned to the right and carved, split tail by H.V. Shourds of New Jersey. "H.V. Shourds – 1999" written under tail. Excellent original paint with a tight crack in neck. **200-300**

940. Lot of two coot decoys. A Herter Factory example and a had carved swimming model from Louisiana both in original paint with wear. **75-125**

941. Lot of two coastal decoys consisting of a canvas covered scoter, a swimming brant. Rugged scoter may be from the Massachusetts coast and is in what appears to be mostly original paint with some roughage to head area. Few original patches on canvas. Swimming brant is a combination of some worn original and some gunning touchup with a cracked neck which is loose on seat with nail repair. **100-200**

942. Canvasback drake decoy c mid to early 1900's. In original paint with in use wear. A well carved decoy possibly from Michigan or Ohio. Unknown maker. **200-400**

943. Lot of two pintail drake s c late 1900's from Louisiana in original paint by the same unknown maker. Made after period decoys by Mark Whipple. Good condition. **200-400**

944. Hays standard grade bluebill drake. May have been tack or painted eye but eyes are now a wax-like substance. Original paint with uniform light to moderate gunning wear. Old wire "staple" repair to thin, tight partial crack in bottom. **200-300**

945. Lot of five cork bodied decoys. One preening goose, one hen merganser, one freshwater coot and two bluebills. Collector tag indicates that the goose may be from the Lake Michigan area. Head back on body. Original paint with overall light wear and very good structural condition. Coot has well carved head and wing detail on body. Very good original paint and condition. One bluebill has head turned to the right with carved wing detail. Original paint with light wear on head and some exposed cork on body with a small chip in cork on lower tail area. "E. Bell" hot brand on bottom. Preening bluebill is in original paint with some light rubs to head and a few small areas of exposed cork. Hen merganser has thin cork body on a wooden bottom board. Carved crest with chip to tip of bill and old crack in neck. In gunning repaint with some wear. **200-400**

946. Lot of three Louisiana decoys. A widgeon drake with wear and dents in old paint. A primitive teal hen in old worn paint and a green-winged teal drake in original paint with wear. **125-225**

947. Excellent Triangle of Three Mallards by the J.W. Reynolds Factory of Chicago, Illinois. All original with very light wear. Original spring lightly rusted. Retains strong and vivid "J.W. Reynolds – Patentee – Forest Park, Ill. – USA". **250-450**

948. Lot of two bluebill decoys from Louisiana. Appear to be made and painted by the same unknown maker. **75-125**

949. Hen Mallard from Louisiana with nicely carved wings and slightly turned head. Unused with a few rubs to the surface. High head canvasback drake from Louisiana in the manner of Whipple. Both in original paint with light wear. **200-400**

950. Lot of two decoys. Bluebill on the top from Louisiana with numerous Museum and exhibit tags on the bottom. Good condition and original paint with wear. A bluebill drake with light wear and heart shaped wings. **450-650**

951. Lot of three Items. A factory bluebill drake with a keel in old paint, a miniature swan with original paint and small amount of crazing and a pintail hen in original paint with wear. **200-300**

952. Lot of three teal decoys from Louisiana. A cinnamon teal drake in good condition and original paint. Two blue winged teal drakes in original paint and good condition. **200-300**

953. Lot of two decoys from Louisiana. A ring-bill drake with heart shaped wing carving and interesting dot paint on the back in original paint with light wear. a ringbill drake with the head forward and the bill open at the end in original paint with light wear. **150-300**

954. Lot of two Louisiana mallard drake decoys. A nicely carved original paint example by Don Contrachris, Lafitte, LA. An alert mallard drake in old paint with wear. **150-300**

955. Nicely carved baldpate hen decoy from Louisiana. Round bottomed and carved wings. Original paint with light wear. **125-250**

956. Lot of two decoys. A nice example of a mallard hen by Barry Chauvin in original paint with light wear and a gadwall drake by Ernest Scarabin in original paint with light wear. **200-350**

957. Lot of 3 Louisiana coot decoys by Barry Chauvin from Larose, LA . Good condition and paint with usual surface rubs. **300-450**

958. Lot of two working ring-bill decoys from Louisiana in good old working paint with wear. **75-125**

959. Lot of two mallard drake decoys. A nice example by Nichol Contrachris, Lafitte, LA in original paint and little wear. An example by Cortez in original paint with light wear. **100-150**

960. Lot of three decoys from Louisiana. A redhead drake in original paint, a ring-bill drake and a green winged teal hen in old repaint. **75-125**

961. Lot of two Louisiana decoys. A black duck in working paint and a mallard hen in original paint and good condition. **200-300**

962. Diminutive pair of mallard decoys made of light wood with wing detail. Original paint and condition. **100-200**

963. Pair of Louisiana teal decoys. Possibly Cinnamon teal. Original paint and condition with light wear. **100-200**

964. A goldeneye and a pintail. Both with bill repair. **75-125**

965. Lot of three decoys. A teal, a mallard, and a pintail hen. **100-200**

966. Lot of six decoys. A stick up black duck, a Carolina canvasback, an old squaw hen, a hen red-breasted merganser, a Wisconsin canvasback hen and a small duck of unknown species. Black duck may be from PEI and shows spoke shave marks and

is in original paint with some rubs to high points. Cracks in sides Carolina canvasback in some original paint with rubs and a crack in neck which can be reset. Old squaw is in what appears to be original paint with light rubs and a chip carved head. Red-breasted merganser may be from the Maritimes and may be a rehead on a body with worn original paint and tail roughage. Hen canvasback may be from the Lake Poygan area (collector info) and is in worn, crackled original paint with roughage to top of head and split in side. Small duck is in weathered wood with a loose body segment. Overall condition is poor to good. **150-250**

967. Lot of field decoys. Three snow goose shells with wood and metal heads which attach through the body. One single Canada goose two piece wooden head and four geese flatties with folding metal stakes on two. Paint ranges from bare metal to good on all. **100-150**

968. Lot of three decoys. A well used Herter Factory Mallard with a bill break, and two ring bill decoys from Louisiana. **100-150**

969. Lot of five decoys. One tinnie plover, one tinnie yellowlegs, one metal crow flattie with applied wings that protrude from the body, one pintail silhouette and one crow silhouette. Tinnies are in mostly original paint with some bare metal showing and plover has some oil like substance on it. Crow flattie is in very good original paint and condition with just a few small areas of bare metal visible. Wooden pintail and crow are in original paint with light wear and a few small chips to bill or tail tip. **50-75**

970. Lot of two Louisiana ring-bill decoys. One by Barry Chauvin without a signature and one by Don Contrachris with "DC" in paint on the bottom. Both are in original paint with light wear. **150-300**

971. Lot of two decoys. A mallard drake with a crusty surface and a canvasback drake with original paint. **100-150**

972. Lot of three decoys. One black duck, one preening mallard hen and a small decoy. Mallard has some original paint and some touchup while the other two are mostly, if not all original. All show moderate to heavy wear with some grain checks. **75-125**

973. Bluebill drake by Eldon Willis of Stacy, North Carolina. Carved in the 1950's when he began carving his own birds. Excellent original paint and condition showing no visible wear. Never rigged. **100-200**
Provenance: X collection James P. Bailey

974. Lot of three Louisiana decoys. An Ibis, A small coot like bird and a preening pintail hen (European) with heart shaped wing outlines. **100-150**

975. Three blue winged teal decoys from Louisiana in original paint and condition. Unrigged. **75-125**

976. Two green winged teal drake and one green-winged teal hen decoys by the same maker. Good condition and original paint with some flaking. **200-300**

977. Lot of three Louisiana teal decoys. Two drake blue-winged teal one by Al Contrachris Sr. and the other by Don Contrachris. Rigged and used with original paint, some wear and a few flakes to paint. A blue winged teal with original paint carved raised wings. Unused and unriggered. **100-200**

978. Lot of three Louisiana decoys. A pair of green-winged with wing detail carving in original paint. Unused and unriggered. A blue-winged teal hen by the same maker with original paint unused and unriggered. **100-200**

979. Black Duck from Louisiana in good condition with original paint with some touch-up. **75-100**

980. Lot of two Louisiana decoys. A ring-bill decoy over painted as a mallard and a black duck by Antoine "Bib" Isadore in gunning over paint. **175-250**

981. Lot of two decoys by Barry Chauvin, Larose, LA. Original paint, unused with few surface rubs. **250-450**

982. Ancient coot decoy from the Oshkosh area of Wisconsin by an unknown carver/hunter. Exact bird pictured on page 184 of "Decoys of the Winnebago Lakes". "WJJ" or "PPM" stamped into weight. Folky old veteran. Original paint. Thin crack in neck and a number of rubs to age mellowed wood. **100-200**

983. Lot of 2 Louisiana decoys. A ring-bill drake with moderate wear and old working paint and a worn teal hen in old working paint. **100-150**

984. Lot of two Louisiana Decoys. A gadwall drake in original paint with light wear and a mallard hen with original paint and wear with some paint chipping. **100-200**

985. Mallard Drake decoy from Louisiana with rounded bottom and nicely carved head. Original paint with light wear. Turned head mallard drake from Louisiana. Original paint with touch up on the head. **100-200**

986. Solid bodied brant from Virginia. Original paint with moderate to heavy wear. A number of rubs or flakes to bare wood. Area of roughness on bottom where weight was removed. **100-200**

987. Lot of six unfinished decoys. Four pintails and two teal with painted heads. **100-200**

988. Lot of two pintail hen decoys from Louisiana. Both in original paint and condition. Unriggered and unused. **100-200**

989. Pintail drake by Coleman, MD. Original paint and keel. Unriggered. **75-125**

990. Black duck from Valleyfield, Quebec Canada area in good original paint with light wear. **75-100**

991. Lot of three. Decorative yellowlegs by Robert Hinckley with dropped split tail. Fine original paint. Stick has split and has been glued together. Decorative black-bellied or golden plover with painted eyes by Robert Hinckley of Centerville. Decorative preening shorebird with split tail and wingtips. Lower portion of bill missing. **50-100**

992. Lifesize Thomas Gelston model curlew by Nathaniel Kirby. Some wing carving and a removable bill. Excellent original paint. Conjoined "NK" to the rear of stick hole. Identified on base with the date "2004". **100-200**

993. Lot of four decoys. Two primitive black ducks, one sleeping and two mergansers in old gunning paint. **200-400**

994. Numerous parts of four factory decoys by Dodge, Peterson and Mason. **75-150**

995. Brant by Hurley Conklin of Manahawkin, NJ. An early gunning decoy by this accomplished maker. In excellent original condition. **300-500**

996. Lot of three blue-winged teal decoys from Louisiana. Two with original paint and glass eyes, rigged for use but with little wear. A third with old working paint and rigging. Signatures on bottom "Nickie Contrachris" and Don C. on another. **150-250**

997. Small shorebird type decoy made as a stick up decoy. Vestiges of original paint. Origin unknown. **25-50**

998. Pair of cork body bluebills with wooden heads and keels. Good old working paint with original keels. **50-100**

999. Miniature (3"long) hanging Canada geese. Carved lifted wings, tiny metal feet. Attributed to "Ducker Dan" Duxbury, MA. Original paint with a few flakes from the back of one goose. **50-100**

1000. Lot of three Louisiana blue-winged teal decoys in original paint with light wear. **125-250**

1001. Lot of approximately 35 miniatures. Owls, pelicans, eagles, cardinals, and miscellaneous species. **100-200**

